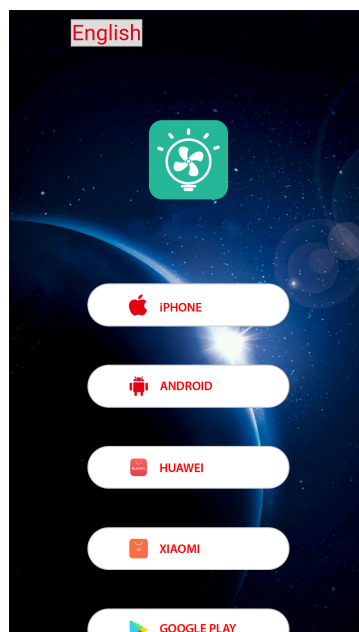


REMOTE CONTROL - WIFI APP

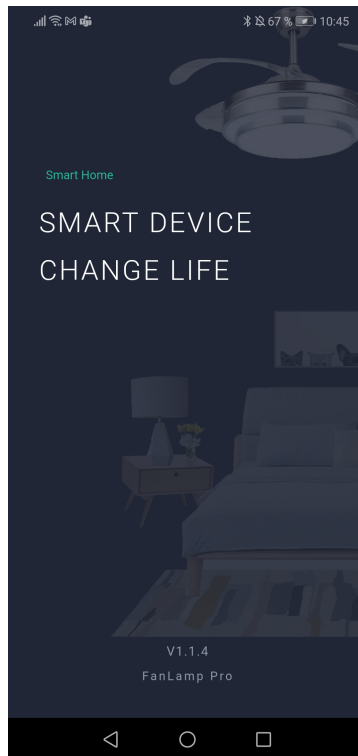


- 1) Scan the below Barcode
- 2) Select the browser to open the download link

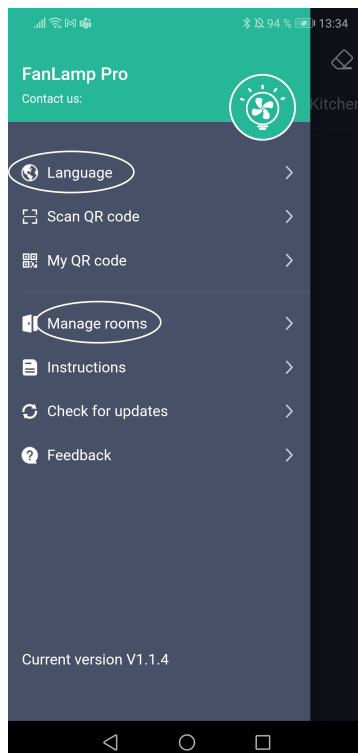


- 3) Choose the related APP with your Smart phone model

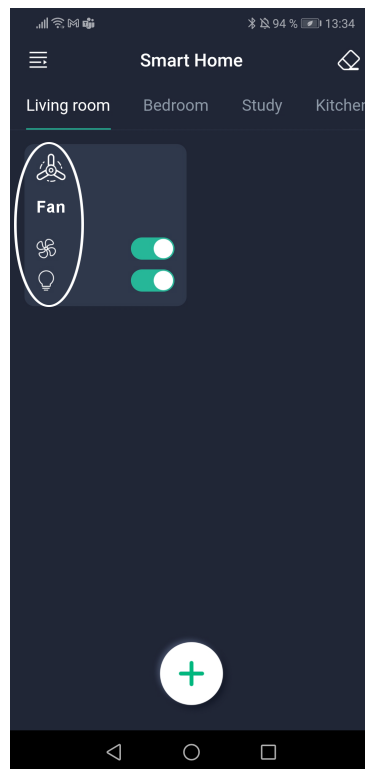
- 4) Load and Install “Fanlamppro” APP in your Smart phone
(Andriod system could load from Google play store too)



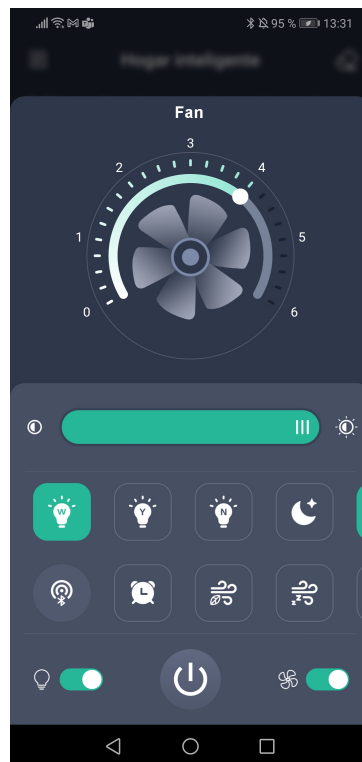
- 5) Choose Language and set room information



6) Enter Room interface and click the fan control interface into main control interface



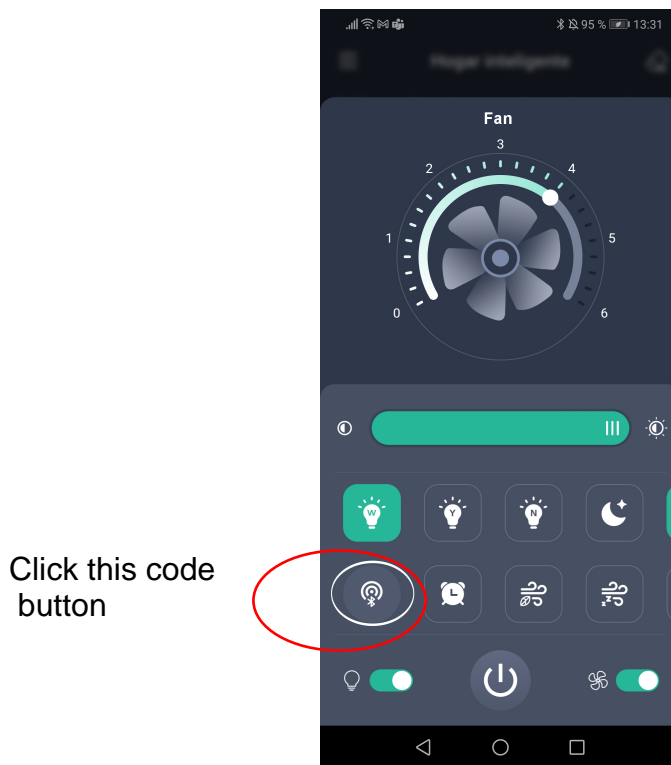
7) Enter the main control interface



8) Open the Bluetooth setting from smart phone, Smartphone is waiting to connect the new blue tooth device;

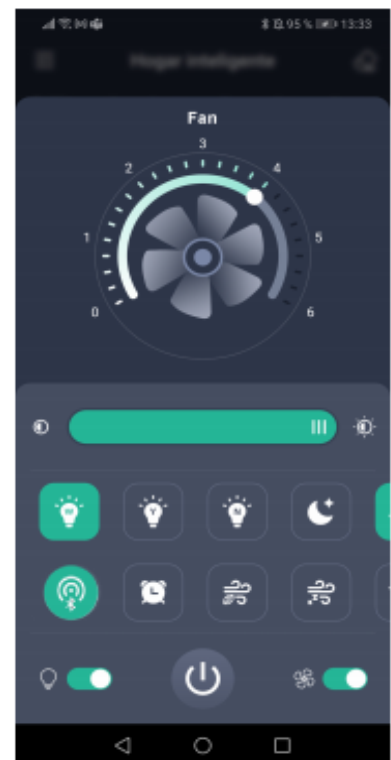
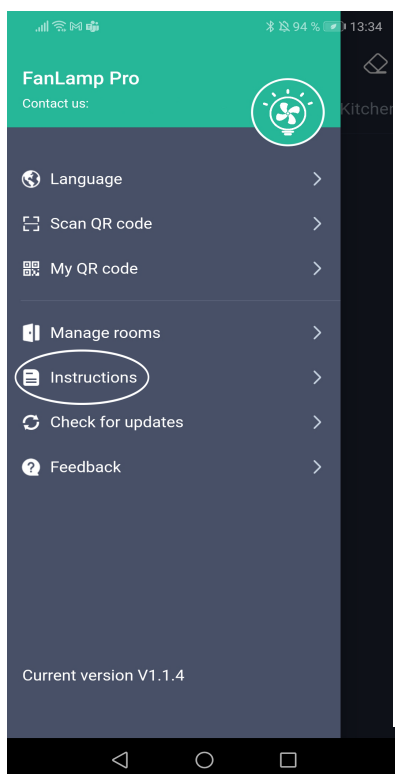
9) "OFF" the electric power supply firstly.

10) Then " turn on" the power again and quickly click on the code check button 5 times,



11) The pair button is in green, the Bluetooth device of Fan lamp had been connected with Smart phone, App could control the Fan lamp now;

12) Follow APP's below instructions to operate the fan lamp;



Only one device can be paired. Once a new device is paired, the previous device will no longer