



Backlit Mechanical Keyboard (Cherry MX Brown)

KAMKBMXBRNA

USER MANUAL



System Requirements:

1. Windows XP / Windows Vista / Windows 7 / Windows8 Operation System
2. Free USB 2.0 Port
3. CD-ROM Driver
4. 50 Mb available memory

Windows XP / Windows Vista / Windows 7 / Windows 8 Installation Procedure

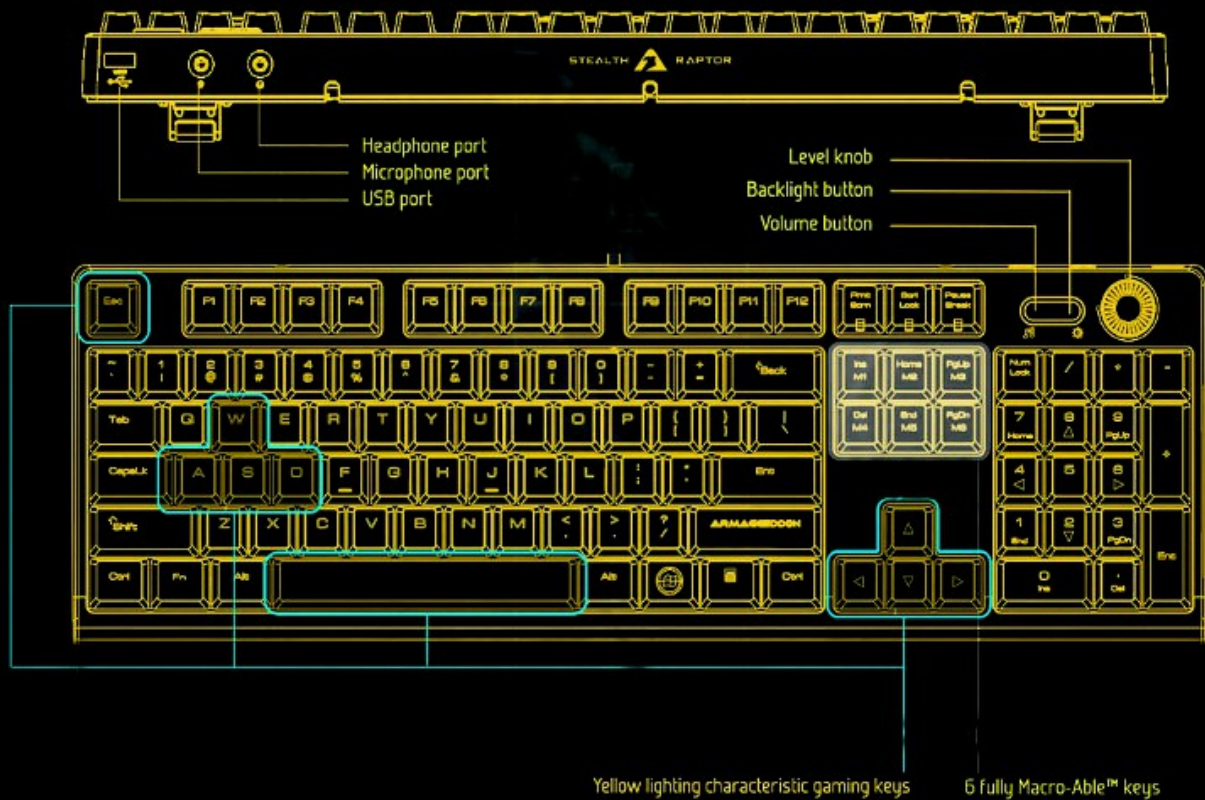
1. Plug the USB interface of KAMKBMXBRNA gaming keyboard onto the free USB port of the computer. The keyboard should be recognized by the computer.
2. Put the software CD of KAMKBMXBRNA gaming keyboard into the CD-ROM driver of the computer (please download the software from the official website if no CD available).
3. Open the folder of the CD-ROM and double click on the *setup.exe* and start the installation of software, then click the "Next" button for going on.
4. Choose the file path for the software, and continue by clicking the button of "Next".
5. The installation interface appears on the screen till the installation procedure done automatically.
6. It tells at the last when the installation is completed. Just click the button of "Finish" to complete.

Software Interface



Knowing your

Mechanical Gaming Keyboard



- Fully 104 MX Cherry Black switches Gaming Keyboard with backlight effects
- Adjust keys effective time in 7 speed transmission: 1ms - 2ms - 4ms - 8ms - 12ms - 14ms - 16ms

Fn +	F1	Reduces speed	
	F2	Increases speed	

- Adjust polling rate: 125Hz - 250Hz - 500Hz - 1000Hz

Fn +	F3	Reduces polling rate	
	F4	Increases polling rate	

- Multimedia shortcut keys on keyboard from F5 ~ F12, press FN key for media playback control function.

Fn +	F5	Play or Pause	F9	Start Media Player
	F6	Stop	F10	Mute
	F7	Previous Track	F11	Volume -
	F8	Next Track	F12	Volume +

- Pressing FN + Scroll Lock on keyboard to adjust back lighting effects:

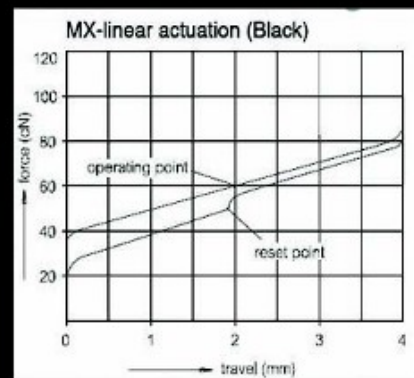
Fn +	Default Mode	Maximum 100% Brightness with Pulsating Lighting Effects
	Scroll Lock 1 ST	Maximum 100% Brightness
	Scroll Lock 2 ND	75% Brightness
	Scroll Lock 3 RD	50% Brightness
	Scroll Lock 4 TH	25% Brightness
	Scroll Lock 5 TH	0% Brightness, no lighting
	Scroll Lock 6 TH	Return to Default Mode, and cycle repeats

- Gaming Mode: Pressing FN + Prnt Scrn on keyboard to enter gaming mode
In gaming mode, Stealth Raptor MKA-7 will work under below condition.
 1. Prnt Scrn key lighted.
 2. Disable Left Window key.
 3. Fn + Left Window key to exchange ASWD and arrows keys function on keyboard.
 4. M1 ~ M6 Macro keys functioning.

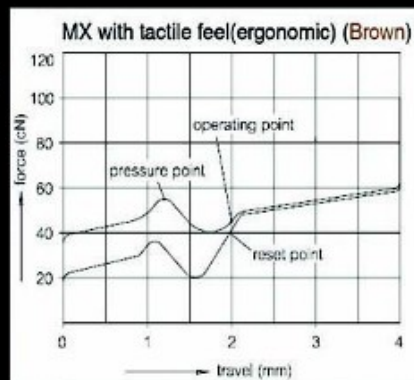
ARMAGGEDDON Stealth Raptor MKA-7 using the top grade MX Cherry Switches with up to 50 million operations.

1. MX Cherry Black Switch
2. MX Cherry Brown Switch
3. MX Cherry Red Switch
4. MX Cherry Blue Switch

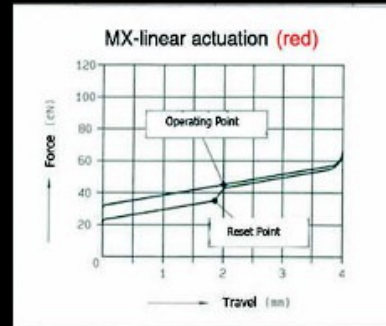
Switch type : CHERRY MX Black
 Type : Linear Switch
 Tactile : No
 Clicky : No
 Actuation Force : 60g (40g-80g overall)
 Key Travel : 2mm to actuation, 4mm to bottom



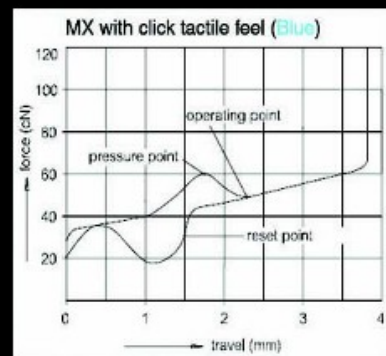
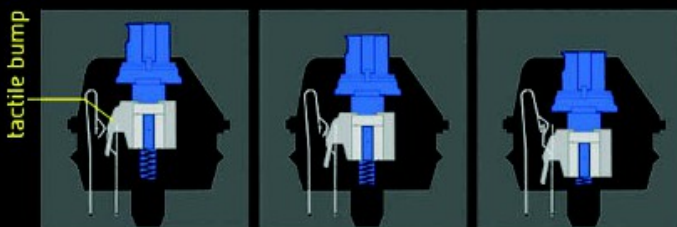
Switch Type : CHERRY MX Brown
 Link : Datasheet
 Tactile : Yes
 Clicky : No
 Actuation Force : 45g (55g Peak Force) (Force Diagram)
 Key Travel : 2mm to actuation, 4mm to bottom



Switch type : CHERRY MX Red
 Type : Linear Switch
 Tactile : No
 Clicky : No
 Actuation Force : 45g
 Key Travel : 2mm to actuation, 4mm to bottom



Switch Type : CHERRY MX Blue
 Tactile : Yes, Precise
 Clicky : Yes
 Actuation Force : 50g (60g Peak Force) (Force Diagram)
 Key Travel : 2mm to actuation, 4mm to bottom



How to configure the keyboard

1. Main Control

Exchange Key / Keys Programmables

Click the keys of the keyboard layout showing in the software product photo and it will pop up a dialogue box.



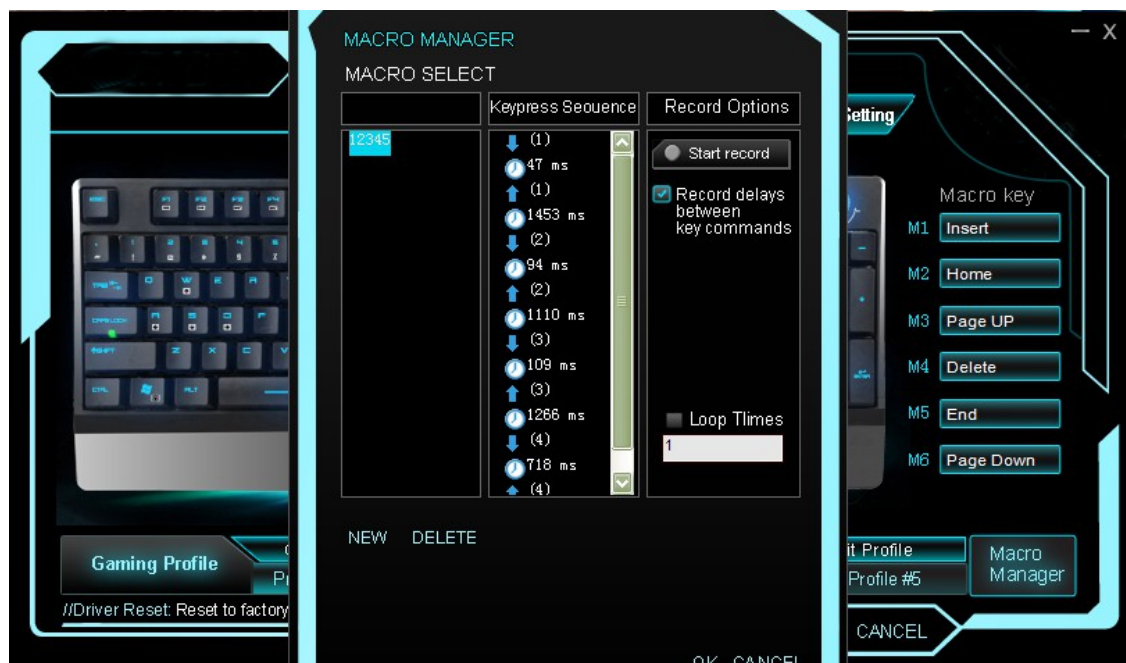
Input the desired key in the dialogue box and click the "OK" button, and then click the "APPLY" button. In this example, after you apply the changes you will get the result of "K" if pressing button "J".

2. Macro Key Definition

A macro is a series of commands and functions (function: A pre-written formula that takes a value or values, performs an operation, and returns a value or values. Accurately speaking, It is a series of key press and release events, recording every keystroke pressed, released, and delays. In which the delays can be automatically entered, that is to say, the time between pressing and releasing the button or the releasing and pressing button can be automatically recorded.

M1,M2,M3,M4,M5,M6 are separate Macro keys.

1) Choose the desired Macro key, and click "Macro Manager". It pops up the dialogue box for Macro Management.

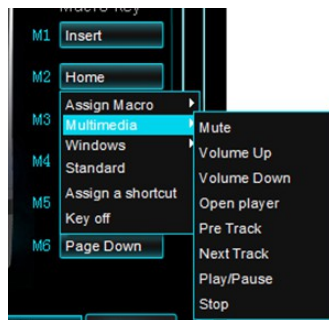


2) Click "NEW" to establish a new Macro, which you can name.

3) Choose the named Macro and edit it by choosing the key-press sequence. You can record delays between key commands in the drop-down menu, by clicking the "Start record" button. Type the key sequences on the keyboard and click "Stop Record" button to finish. Then click the "OK" button to quit, assign the Macro to the key and apply.

3. Multimedia Function

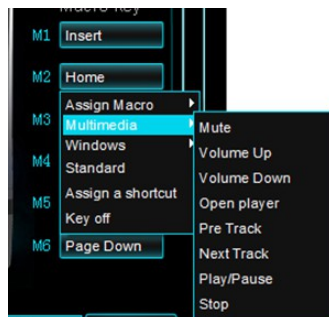
1) Choose the Macro Key to make a drop-down menu appear. Choose the item labeled "Multimedia".



2) Choose the desired function in the drop-down menu and click the "APPLY" button.

4. Windows Management

1) Choose the Macro Key to make a drop-down menu appear. Choose the item labeled "Windows".

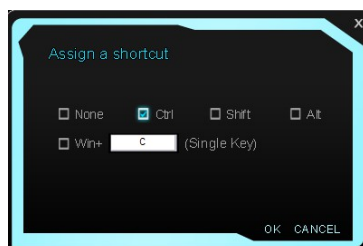


2) Choose the desired function in the drop-down menu and click the "APPLY" button.

5. Assign a Shortcut

It realizes one key for common combination keys used under operation systems with the gaming keyboard.

1) Choose the Macro Key to make a drop-down menu appear. Choose the item labeled "Assign a shortcut".

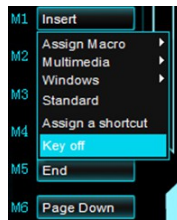


2) Choose the desired function in the *Assign a shortcut* dialogue and click the "OK" button.

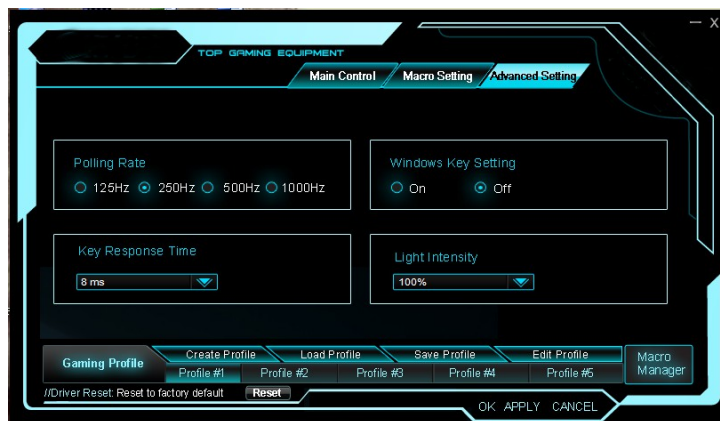
It executes the function of "Ctrl"+"C", as demonstrated in the photo above.

6. Disable Key Function

1) Choose the Macro Key to make a drop-down menu appear. Choose the item labeled "Key off" and click the "APPLY" button.



7. Advanced Setting



Choose the Polling Rate, Windows Key Setting, Key Response Time and Light Intensity settings.

8. Gaming Profile

Each profile corresponds to one keyboard key mode, so for the players making targeted game profiles can provide powerful support.

Gaming keyboard software supports to save the current configuration settings of the keyboard as a profile for a game and you can save it in your computer (recommend to name profile with the appropriate name of the game).

The software has 5 default profiles from Profile#1 to Profile#5, which is saved in folder of Config under the file path of the driver installation and is corresponding with 5 different games.

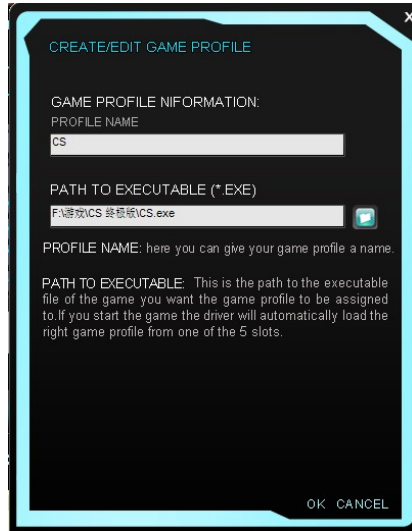


The gaming keyboard supports to create profile, load profile, save profile and edit profile.

You can save all kinds of temporarily not using profiles on your PC, and load them directly next time. It will save you lots of time to define it again next time. You also can transfer and use the saved profile on different PCs.

A. Create Profile

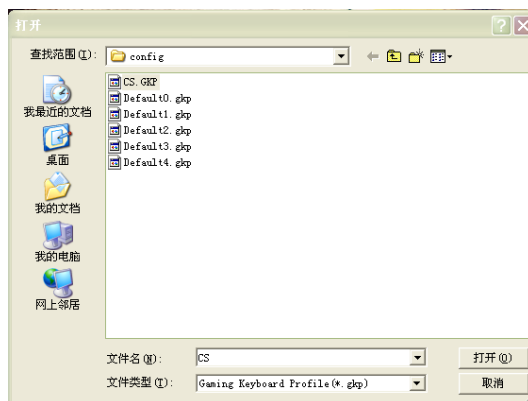
- 1) Open the software and choose "Create Profile" to create a new profile to correspond with the game.



- 2) Click "OK" button
- 3) Click "APPLY" button

B. Load Profile

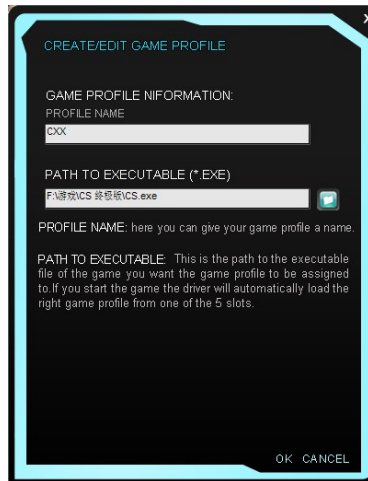
- 1) Open the software and choose "Load Profile";



- 2) Choose the desired profile, and click the "Open" button to continue.
- 3) Click "APPLY" button

C. Edit Profile

1) Edit the profile which is corresponding to the game.

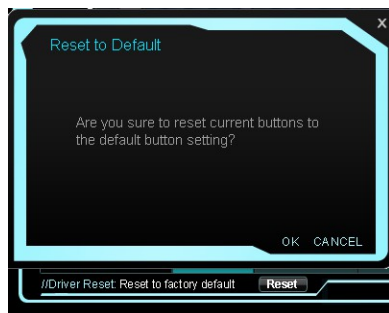


2) Click the "OK" button

3) Click the "APPLY" button

9. Driver Reset

1) Click the "Reset" button



2) Click the "OK" button.