

MANUAL

For Mazda old Mazda 6 manual and automatic installation 2004-2015 / C7113

Central Control Disassembly and Operation
Post-installation rendering



TOOLS REQUIRED FOR DISASSEMBLY

1. Wires 2. Installation tools



1

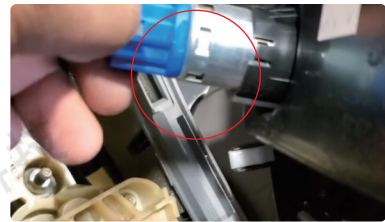


2



Disassembly:

1. Unscrew the gear lever handle counterclockwise, use a pry bar to open the cup holder frame and remove it. Then, pry open the base of the gear lever and take it out, disconnecting the attached cables.



2. Loosen the screws on both sides beneath the air conditioning control panel, then remove the three temperature control knobs. Next, use a screwdriver to unscrew the screws at the bottom of the knobs.



3. Open the storage compartment, release the clips on both sides to detach and remove the storage box. Then, unscrew the screws on the original car radio.



4. Remove the original car radio, disconnect the wires. Next, unscrew the four screws on the air conditioning vents and remove vents. Then, unscrew the six screws on the base of the temperature control knobs and take out the knob base.



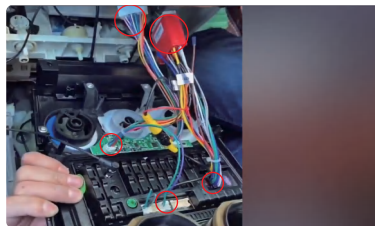
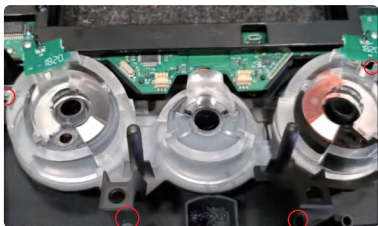
PROPOSE

Before starting the replacement job, you should prepare tools such as a plastic pry tool and a screwdriver, and make sure the car's power is cut off during the installation.

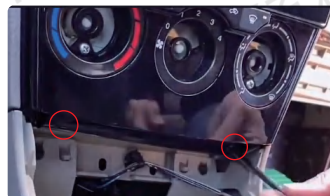
Installation

(If the wiring harness does not match, please contact customer service to request the correct wiring harness)

1. Reinstall the removed air conditioning vents and temperature control knob base onto the new radio frame, tightening the corresponding screws. Connect the wiring of the new radio to the original vehicle's wiring and install the new radio into the original car.



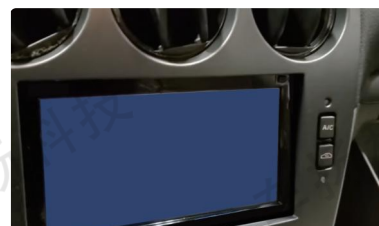
2. Screw in the two screws inside the knob and the two screws securing the bottom of the radio, then reinstall the knob.



3. Reinstall the base of the gear lever, then tighten the gear lever handle back into place clockwise.



4. Put the storage compartment back into the original vehicle, securing it with the clips. The installation of the new radio is complete.



COMPARATION

Effect of Installation



GENTLE REMINDERS

Due to the complexity of the product structure, you may encounter some problems during installation. If you still have any questions about the installation after reading this manual, you can contact us and we will respond to you within 24 hours. Don't worry; we will do our best to solve the problem for you until you are satisfied.

After-sales email: cheyang728@gmail.com

WARN FCC WARNING

This device complies with Part 15 of the FCC Rules. Operation is subject to the following two conditions:

- (1) This device may not cause harmful interference.
- (2) This device must accept any interference received, including interference that may cause undesired operation