

SEE MILES AWAY

2025
CATALOG

MEASUREMENT TOOLS

Revolutionize Measurement To
A Completely New Level



DISTANCE MEASUREMENT TOOL



THERMAL IMAGING



Mileseey Technology (US) Inc.

17800 CASTLETON ST STE 665 CITY OF INDUSTRY, CA 91748

www.mileseeytools.com



YouTube



Facebook



TikTok



Instagram

MileseeyTools



- 01 ABOUT US
- 02 BRAND STORY
- 03 OUR VISION
- 04 WHY CHOOSE US?
- 05 BRAND MILESTONES
- 07 GLOBAL MARKET

DISTANCE MEASUREMENT TOOL

DIGITAL TAPE

- 11 XTAPE 1
- 15 DTX 10

SPACE MASTER SERIES

- 21 DP20 PRO
- 25 D9 PRO

PROFESSIONAL

- 31 P9
- 35 S7

THERMAL IMAGING

HANDHELD THERMAL IMAGING

- 41 TR10
- 45 TR384E & TR384C

- 49 TR256C & TR256 & TR120

CAMERA FOR PHONE

- 51 TP2 PLUS
- 61 TR256i
- 65 TR256P

ABOUT US

Mileseey is among the top three global companies specializing in high-precision laser distance measurement technology and a leader in commercial smart laser measurement solutions. Established in 2009, it has grown to be a premier provider of integrated technology, products, and services, with a global team of over 300 talents. Mileseey Tools, a sub-brand of Mileseey specializing in handheld laser ranging and optoelectronic innovation devices, is committed to seamlessly integrating industrial-grade precision ranging and optoelectronic tech with AI advancements. We focus on innovation to provide cutting-edge tools for the future.

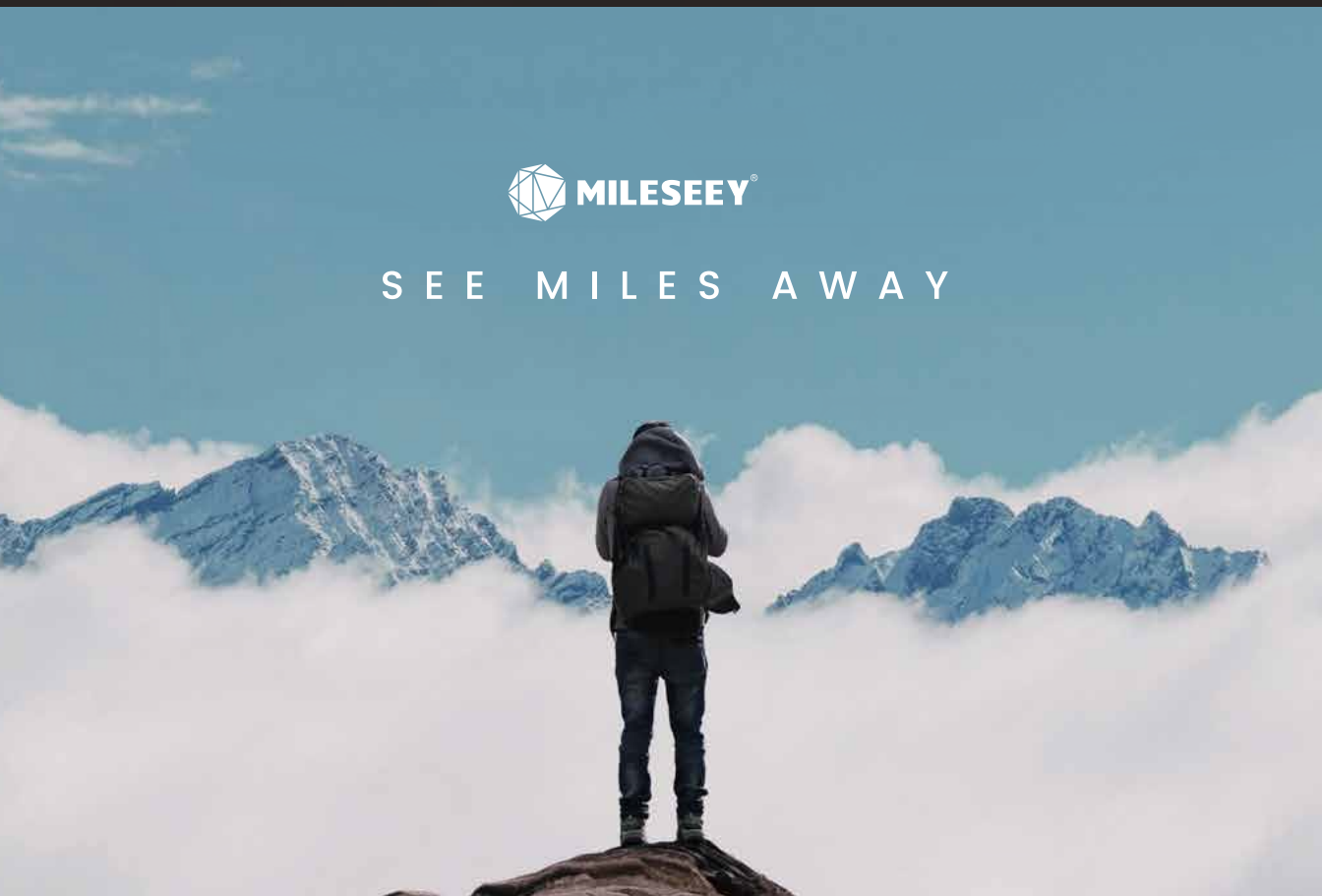


BRAND STORY

In 2006, young engineer Jore Chou, growing up in an architecture family, noticed a lack of user-friendly distance measurement tools in the market. "Why can't professionalism serve people?" he wondered. This question sparked his journey into laser ranging technology and product innovation. He was determined to create an intelligent laser measurement tool that maintained professionalism while incorporating innovative, user-centric design. After 3 years of effort, world's first consumer grade LDM --- S1, was launched.

In 2009, Jore's vision took flight, with the MILESEEEY brand becoming a bright beacon. He and his team break the old mold and create products innovative and bold, leading the industry forward.

MILESEEEY was not only a pioneer in the miniaturization of laser ranging tools, but also invented the "laser digital tape measure" which merge laser ranging and tape reading tech, propelling the personal electronics tool industry to new heights.



SEE MILES AWAY

OUR VISION

To transcend the confines of human perception and unveil a world of limitless possibilities that expands our senses beyond imagination.

WHY CHOOSE US?

LEADING TECHNOLOGICAL STRENGTHS REMARKABLE QUALITY & PRODUCTIVITY

We are a full spectrum technology company

Boasting a R&D team of over 100 accomplished doctoral researchers & specialists, MILESEY has established a comprehensive technological system from bottom to the top, securing over 200 intellectual property patents and standing out as one of the few manufacturers worldwide with complete control over the entire industry chain.

We have remarkable quality & productivity

MILESEY has established 10,000-grade purification workshops equipped with advanced testing and experimentation facilities. Our factory boasts an impressive annual production capacity of up to millions of units with exceptional quality. Our products have reached over 100 countries, attracting a user base of more than 1 million.

REVOLUTIONIZE MEASUREMENT TO A COMPLETELY NEW LEVEL

16+

Over 16 years' photoelectric technology R&D experience

100+

Over 100 accomplished doctoral researchers and specialists

300+

Over 300 intellectual property patents secured

2024

The world's first modular digital tape with a laser measure, XTAPE1, was launched.

2023

The all-in-one laser measure with touch screen, D9 PRO, was launched.

2022

The IF award-winning DP20 PRO bilateral laser distance meter was launched. The LDM series ranked No.1 in global shipments.

2020

The milestone 1,000ft P9 flagship outdoor LDM with a viewfinder camera was launched.

2016

The revolutionary D7 LDM series was launched.

2015

Word's first LDM with touch screen and Bluetooth, the D5T, was launched. In-house developed "FM" measuring tech granted US patent. S2 LDM received the National Key New Product certification.

2012

DE ROCK X3 LDM series with the industry's highest protection of IP67 was launched.

2019

Mileseeey established a 6,000 m² manufacturing center with a 1,000-grade purification workshop for million-level production.

2018

The world's first R2B LDM was launched, integrating laser measure, measuring wheel, and laser level.

2017

The first outdoor 660ft LDM with a viewfinder camera, P7, was launched. The first commercial outdoor high-precision displacement sensor, LK02, was launched.

2011

S3 series, the world's first intelligent LDM series, was launched. Mileseeey independently innovated the "MOS" operating system.

2010

Milesseeey's S3A, a LDM boasting an ultra-long range of up to 330ft, was launched.

2009

Mileseeey was formally registered. Mileseeey's second-gen high-precision LDM, the S2, was launched.

2008

Mileseeey's first-gen handheld LDM, the S1, was launched. One of the pioneering teams in the innovative patent field of "dual transmitter and single receiver".



100

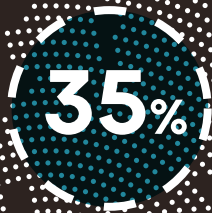
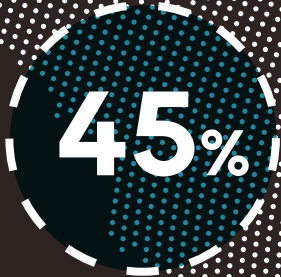
Our products have been sold to over 100 countries.

10M

We have attracted a user base of more than 10 million.

6k

We have established a 6,000 square meters manufacturing



OUR GLOBAL BUSINESS

Mileseey has gained global acclaim as a highly sought-after brand in the field of measurement tools. With a presence in over 100 countries and an impressive user base exceeding 10 million, we have established ourselves as a trusted industry leader. Prioritizing the American and European markets, Mileseey's appeal attracted discerning customers seeking precision and reliability in these influential regions.

By consistently delivering products that pairs timeless aesthetics with cutting-edge technology, Mileseey has earned exceptional trust and loyalty. With a focus on quality and a deep understanding of customer needs, Mileseey stands as a highly respected and trusted name in the realm of measurement tools worldwide.

Media Coverage

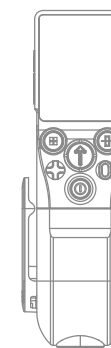


SEE MILES AWAY

WHERE REVOLUTIONARY DESIGN MEETS CUTTING-EDGE TECHNOLOGY

DIGITAL TAPE

The Mileseey's digital tape series is the world's first product series that combines traditional tape measure, laser distance meter, and digital tape measure into a single measuring device, which represents a significant upgrade over conventional tape measures, offering unparalleled precision, efficiency, and convenience while retaining the familiar usage habits of traditional tape measure users. With patented calibration code on blade, an optical sensor constantly scan the the blade and recalibrate the device every 4" to within 1/16" , ensuring extreme accuracy. These features make DT series a revolutionary measuring device that offers professionals maximal measuring accuracy, conveniences and efficiency.



XTAPE 1



DTX10

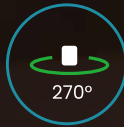
XTAPE 1

DIGITAL LASER TAPE MEASURE

A pro-grade modular digital laser tape measure that marries digital tape and laser measurement module, letting you freely and accurately measure anywhere in space, near or far.



Modular
Design



Top-grade
Green Laser Line



Dynamic Live
Angle Display



Peak
Accuracy

XTAPE 1

Tape Length: 12ft(3.5m)
Digital Accuracy: $\pm 1/32"$ (1mm)
Laser Range: 330ft(100m)
Laser Accuracy: $\pm 1/16"$ (2mm)
Memory: 30 Groups

- L * W * H: 51*67.5*162.5mm
- Net Weight: 454g (1 lb)



The Mileseeey XTAPE 1 is an advanced digital laser tape standing out with a modular design that combines a digital tape laser measurement capabilities. The modular design is a significant step towards sustainability, allowing for component upgrades and replacements without the need to discard the entire device, reducing waste and extending the product's life cycle.

ENDURING MODULAR INNOVATION

Experience lasting utility with XTAPE 1's modular design. The easily replaceable tape modules keep your device cutting-edge and eco-friendly, reducing costs and waste.



PEAK ACCURACY

Utilizing groundbreaking vision-based technology for digital tape reading, the XTAPE 1 produces digital data with unprecedented accuracy within $\pm 1/32"$, ensuring superior-quality work.

EASY MEASURING OF
INACCESSIBLE AREAS

The inclusion of a laser unit enables fast and accurate non-contact measurements up to 330ft, making it easy to measure hard-to-reach areas without physical strain.



TOP-GRADE GREEN LASER,
EASY CROSS-SURFACE
ALIGNMENT

The XTape 1 incorporates the highest-grade green aligning laser, featuring unparalleled laser brightness and extended range, perfect for aligning any elements in the space.



LIVE ANGLE DISPLAY FOR
REAL-TIME ANGLE FEEDBACK

Thanks to the sophisticated angle measuring tech, the XTape 1 displays real-time angle changes when you rotate or tilt the device. The green laser reference ensures ease and accuracy in intricate angle measurement.



PRODUCT PROFILE



Model	XTAPE 1
Laser Range	330ft(100m)
Tape Range	12ft(3.5m)
Tape Blade	3.5m*26mm Class I Highest-grade Steel Blade
Laser Accuracy	± 1/16"(±2mm)
Digital Accuracy	± 1/32"(± 1mm)
Display	2"IPS
Measurement Angle	±0.3°
Units	m/cm/mm/ft/in/''
Reference	Front/Green Laser Line/Rear
Laser Class	2
Memory	30 Groups
Point-to-Point(P2P)	✓
Live Rotation Angle Display	✓
Live Tilt Angle Display	✓
Laser Type	
-Red	650nm ,<1mw
-Green	525nm , <1mw
Battery Type	1400 mAh Rechargeable Li-ion Battery
Dimension	162.5*51*67.5mm
Weight	454g

DTX 10

DIGITAL TAPE MEASURE

Combining digital tape measure, laser measure and an industry-first green laser line, the DTX10 is a revolutionary 3-in-1 measuring instrument for pros.



Mixed data
Source calculation



Laser
Measure



Ergonomic
Design



Green
Laser Line

DTX 10

- Laser Range: 330ft(100m)
- Tape Length: 12ft(3.5m)
- Digital Accuracy: $\pm 1/32"$ (1mm)
- Laser Accuracy: $\pm 1/16"$ (2mm)
- Green Laser Line
- Units: mm/cm/m/ft/in/''
- APP Connectivity

- L * W * H: 204*51*96 mm
- Net Weight: 530g



The DTX 10 is a cutting edge 3-in-1 measuring device that combines digital tape measure, laser measure, and a green laser line extension, upgrading digital tape measure to a completely new level. Boasting an unprecedented 1/16" digital accuracy, the DTX10 is the ultimate measuring tool for pros who seek to be competitive and efficient on a fast-paced jobsite.

GREEN LASER LINE EXTENSION

The industry-first green laser line on the tape measure is a game-changer, providing fast and precise alignment between blade markings and measured points on any object. The laser extends to both sides, enabling indirect measurements when obstacles block the blade's reach.



DUAL TAPE/LASER MEASUREMENTS

The DTX 10 features a durable 3.5m x 25mm steel blade with a rust-resistant nylon coating. The advanced retraction system automatically brakes the blade upon extension without external pressure. Plus, the innovative modular design allows professionals to replace the blade easily by driving a few screws.

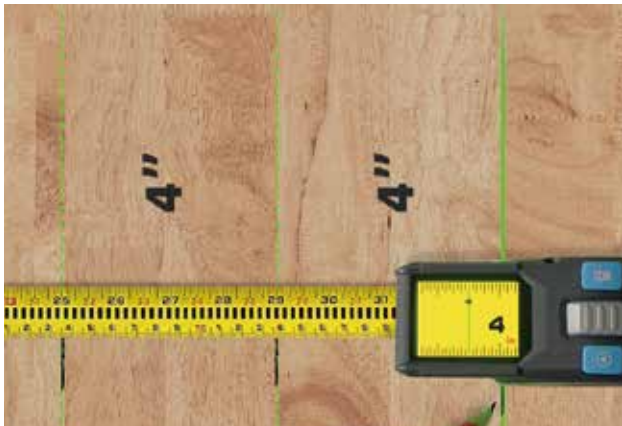
INTELLIGENT DISPLAY

A 2"IPS color screen illuminates mea-
surements with high contrast, and wide
viewing angles. The unique "digital"
blade mode displays measurements
on a digital blade that seems to come
out of the screen, running alongside
the realistic blade as it extends.



INCREMENTAL MEASUREMENT

Incremental measurements involves
no calculations as it allows you to reset
the measurement number back to zero
simply by a button click when extend-
ing the blade to a particular point.

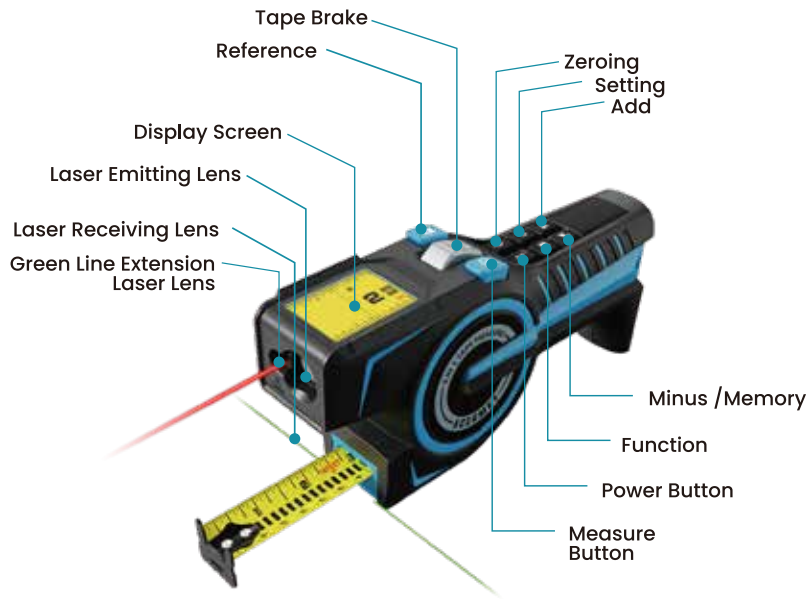


STATE-OF-THE-ART LASER MEASURE

Featuring a cutting-edge laser mea-
sure that extends measurement up to
330ft with $\pm 1/16"$ accuracy, the DTX 10
allows an easy measurement to inac-
cessible points without moving. Users
can easily switch between the tape
measure and laser measure for maxi-
mum efficiency.



PRODUCT PROFILE



Model	DTX 10
Laser Range	330ft(100m)
Tape Length	12ft(3.5m)
Tape Blade	3.5m*25mm Nylon-coated Steel Blade
Laser Accuracy	$\pm 1/16"$ ($\pm 2\text{mm}$)
Digital Accuracy	$\pm 1/32"$ ($\pm 1\text{mm}$)
Display	2.0" IPS
Measurement Angle	$\pm (0.3^{\circ}+0.1^{\circ}+0.01^{\circ}A)$
Units	mm/cm/m/ft/in/ ' "
Reference	Front/Green Laser Line/Rear
Laser Class	2
Laser Type	
-Red	650nm, <1mw
-Green	525nm, <1mw
Auto Power Switch-off	After 180s of inactivity
Auto Laser Switch-off	After 30s of inactivity
Battery Type	2600 mAh Rechargeable Li-ion Battery
Storage Temperature	-10°C~60°C
Operating Temperature	0°C~40°C
Dimension	204*51*96mm
Weight	530g



Model	XTAPE 1	DTX 10
Modular Design	✓	x
Laser Range	330ft(100m)	330ft(100m)
Tape Range	12ft(3.5m)	12ft(3.5m)
Tape Blade	3.5m*26mm Class I Highest-Grade Steel Blade	3.5m*25mm Nylon-Coated Steel Blade
Laser Accuracy	± 1/16"(±2mm)	± 1/16"(±2mm)
Digital Accuracy	± 1/32"(± 1mm)	± 1/32"(± 1mm)
Display	2.0 "IPS	2.0 " IPS
Measurement Angle	±0.3°	± (0.3°+0.1°+0.01*A)
Units	m/cm/mm/ft/in/ ' "	mm/cm/m/ft/in/ ' "
Reference	Front/Green Laser Line/Rear	Front/Green Laser Line/Rear
Angle Sensor	✓	✓
Gyro Sensor	✓	x
incremental Measurement	✓	✓
Point-to-Point(P2P)	✓	x
1/N Line Split Function	✓	x
Live Rotation Angle Display	✓	x
Live Tilt Angle Display	✓	x
App Connectivity	✓	✓
Hook	Four-sided magnet	Two-sided
Material	Polished Alloy +PC+ABS	PC+ABS
Property	Durable, Sustainable, Futuristic	Durable
Green Laser Line	Multi-Wall Extension(16.4ft)	Near-device Extension(1.9ft)
Memory	30 Groups	30 Groups
Laser Class	2	2
Laser Type		
-Red	650nm ,<1mw	650nm ,<1mw
-Green	525nm , <1mw	525nm , <1mw
Battery Type	1400 mAh Rechargeable Li-ion Battery	2600 mAh Rechargeable Li-ion Battery
Dimension	162.5*51*67.5mm	204*51*96mm
Weight	454g	530g

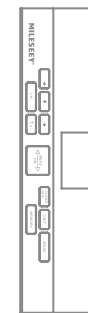
SEE MILES AWAY

LASER PRECISION WITH MG-AL ALLOY INGENUITY



SPACE MASTER SERIES

Space Master is as passionate and imaginative as human exploration of space, as well as the endless creativity and innovative spirit that burst out from it. It aims to explore the future of the laser ranging industry, create brand-new distance detection and distance perception products, and meet the creative needs of various DIY and professional users who are full of expectations for future technology. These products have common characteristics: future technology style, highly intelligent, globally unique...



DP20 PRO



D9 PRO

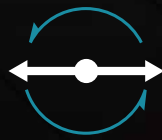
DP20 PRO

BILATERAL LASER DISTANCE METER

The DP20 PRO is a marvel of form and cutting-edge technology.



One-way
Measurement



Two-way
Measurement



Integrated
co-axial optics
Design



Real-time
App Data Sync

DP20 PRO

- One-way/Two-way Measurement
- Integrated Coaxial Optics Technology
- Industry-First Middle Mark Laser
- App Connectivity
- Pristine OLED Display
- Extra-Long Range Up to 390ft

- L * W * H: 160*42*21mm
- Net Weight: 146g



Elaborate design, laser-engraved key caps, aircraft-grade magnesium-aluminum alloy, compact & lightweight, patented coaxial optical mechanism, the Mileseeey's DP20 PRO is the world's most advanced bilateral LDM that allows you to capture distance up to 390 ft between two points instantly by positioning yourself anywhere. Whether you are a do it yourself or a professional, the DP20 PRO will make measuring space a breeze.

TIME SAVING & CONVENIENT

The DP20 PRO is a powerful laser measuring tool that significantly improves your work efficiency by making measurement much faster. You can acquire the distance between two points by positioning yourself anywhere in the line of measurement.

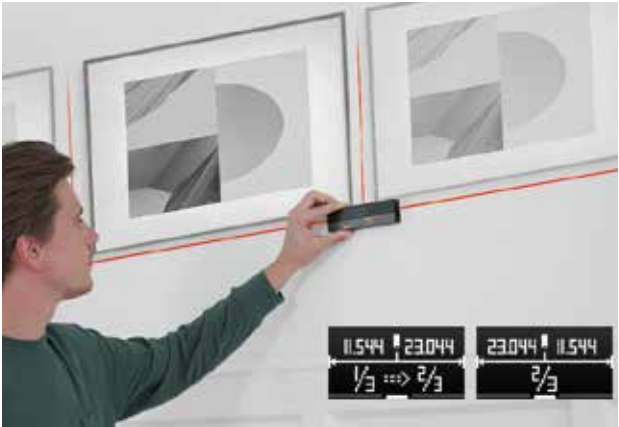


PATENTED INTEGRATED CO-AXIAL OPTICS TECHNOLOGY

The state-of-the-art patented integrated coaxial optics technology ensures 100% two-way beam alignment, providing extreme measuring accuracy up to $\pm 1/16"$ for bidirectional measurement.

1/N LINE SEGMENT DIVISION

With innovative 1/N segment division function, the DP20 PRO is designers' best ally. It helps effortlessly divide the space into equal sections, allowing precise object placements and facilitating the creation of impressive and cohesive space display. The uniquely designed middle mark laser provides visualized references.



APP CONNECTIVITY

All the measuring results in the bilateral laser measure can be easily transferred to a smart life sketching App. You can quickly construct a plan, make a sketch and share results across your partners.

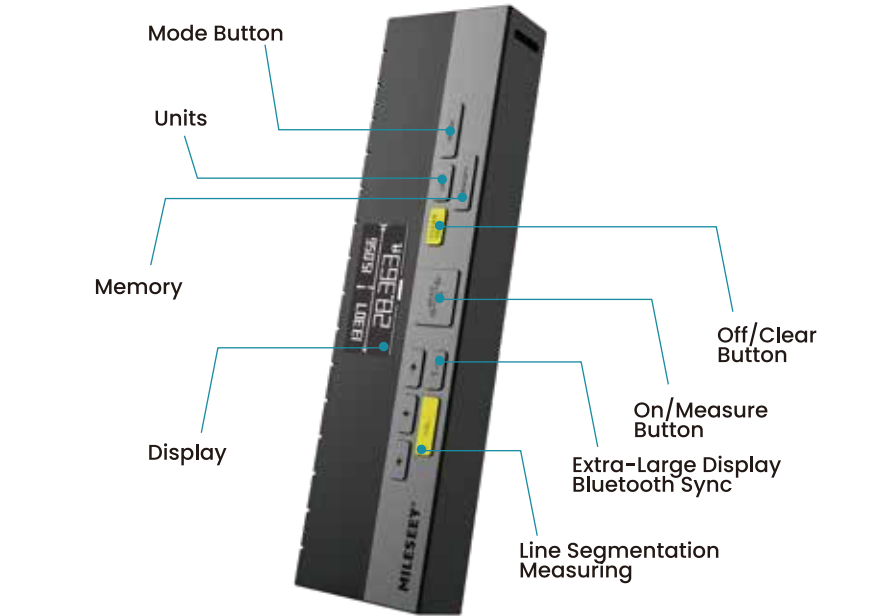


ELABORATE DESIGN & HIGH-QUALITY WORKMANSHIP

Precisely machined metal housing, simple-to-use buttons with laser-engraved intuitive labels, extra-compact & lightweight, made of aircraft-grade magnesium-aluminum alloy, the laser measuring tool is durable enough and highly wear & corrosion resistant to withstand rugged job site conditions and extreme temperatures. The backlit HD OLED & innovative "big text" mode make measurements easy to read even in dark areas.+



PRODUCT PROFILE



Model	DP20 PRO
Range	390ft(120m)
Accuracy	± 1/16" (±2mm)
Display	HD OLED Display
Measuring Reference	Front/Rear/Middle Laser Mark Line
Units	m/ft/in/ ' "
1/N Line Segment	✓
App Connectivity	✓
Laser Class	2
Laser Type	650nm, < 1mW
Battery type	Rechargeable Li-ion Battery, 3.7v, 1000mAH
Dimension	160*42*21mm
Weight	146g

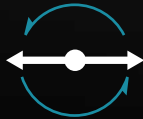
D9 PRO

LASER DISTANCE METER

A cutting-edge 330ft laser measure with one button design, bilateral visual laser aligning and 2.4' IPS screen.



2.4" IPS Screen



Visual Laser Aligning on Both Sides



Touch Screen



Magnetic Grip

D9 PRO

- Range: 330ft(100m)
- Accuracy: ±1/16"(2mm)
- 2.4" IPS Touch Display
- Visual Laser Aligning on Both Side
- App Connectivity
- LED Light

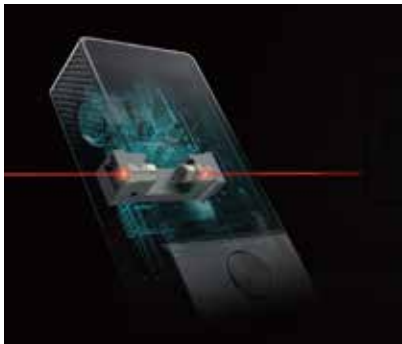
- L * W * H: 118*48.5*24.5mm
- Net Weight: 182g



The Mileseey D9 PRO laser distance meter is an impressive measuring device with a range of up to 330ft. Its smooth and uniform appearance showcases a sleek design. Featuring a one-button design, it allows for easy and efficient measurements. With horizontal visual laser aligning on both sides, the D9 PRO enables easy alignment and precise measurement. It also supports live voice broadcast and APP connectivity for optimal measuring convenience.

UNPRECEDENTEDLY EASY ALIGNMENT

The visual aligning laser indicator of the D9 PRO shows crystal-clear, fast and accurate alignment in capturing geometry of any objects.



CUTTING-EDGE POINT-TO-POINT(P2P) TECHNOLOGY

Measurement of inaccessible areas and complex situations can be a daunting task. The D9 PRO incorporates a cutting-edge point-to-point (P2P) feature powered by built-in Intellipivot™, which accurately calculates the distance between any two points from one remote location.

LIVE ROTATION ANGLE DISPLAY ON ANY SURFACE

The Mileseey D9 PRO comes equipped with state-of-the-art angle sensors and innovative real-time rotation angle display. The feature gives you real-time feedback of correct angle you need, aiding you in angle measurement of highest degree of accuracy on any surface.



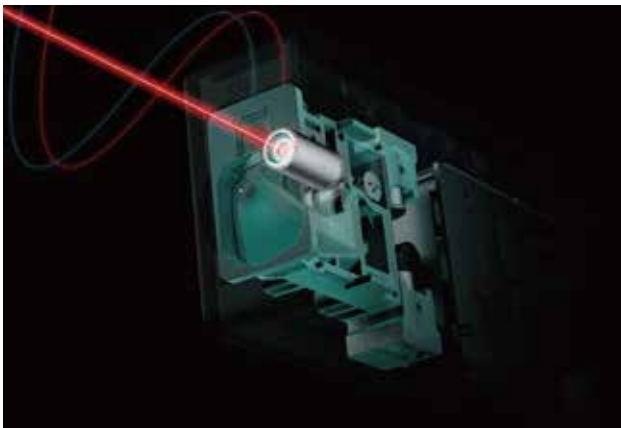
SMART INDIRECT HORIZONTAL DISTANCE & INDIRECT HEIGHT

The D9 PRO offers various advanced indirect measuring features such as smart horizontal distance and vertical height.



POWERBURST & POWERCHIRP TECHNOLOGY

The D9 PRO capitalizes on Mileseey's patented PowerBurst & PowerChirp (PB&PC) technology driven by leading-edge photo-electric sensors, which offers increased peak laser power and a higher signal-to-noise ratio, providing an extended measuring range up to 330ft and a remarkable accuracy up to $\pm 1/16''$.



PRODUCT PROFILE



Model	D9 PRO
Range	330ft(100m)
Accuracy	$\pm 1/16''$ ($\pm 2\text{mm}$)
Display	2.4" IPS Touch Display
Measuring Reference	Front/Rear/Tripod /Dual Aligning Laser
Units	mm/cm/m/ft/in/ ' "
1/N Line Segment	x
Live Angle Display	✓
App Connectivity	✓
P2P	✓
Laser Class	2
Laser Type	650nm, < 1mW
Battery type	Rechargeable Li-ion Battery, 3.7v, 1800mAh
Dimension	118*48.5*24.5mm
Weight	182g



Model	DP20 PRO	D9 PRO
Range	390ft(120m)	330ft(100m)
Accuracy	± 1/16" (±2mm)	±1/16" (±2mm)
Display	HD OLED Display	2.4" IPS Touch Display
Measuring Reference	Front/Rear/ Middle Laser Mark Line	Front/Rear/Tripod / Dual Aligning Laser
Units	m/ft/in/ ' "	mm/cm/m/ft/in/ ' "
1/N Line Segment	✓	x
Live Angle Display	x	✓
Point to Point(P2P)	x	✓
Auto Vertical Height	✓	✓
Wall Area	x	✓
White/Black Screen Background	x	✓
Large Font Mode	x	✓
Angle Sensor	✓	✓
Gyro Sensor	x	✓
LED Flashlight	x	✓
App Connectivity	✓	✓
Memory	20 Groups	30 Groups
Laser Class	2	2
Laser Type	650nm, < 1mW	650nm, < 1mW
Battery Type	Rechargeable Li-ion Battery, 3.7v,1000mAH	Rechargeable Li-ion Battery, 3.7v,1800mAH
Dimension	160*42*21mm	118*48.5*24.5mm
Weight	146g	182g

SEE MILES AWAY

A TRUE TESTAMENT TO REVOLUTIONARY MEASURING INNOVATION

PROFESSIONAL

The Advanced series laser measures are specifically designed for professionals who demand advanced high-performance tools to stay competitive and efficient on complicated fast-paced job sites. Boasting a max range of up to 1,300 ft, IP65 protection, and advanced patented Powerburst and Powerchirp technology that effectively eliminates the environmental interference to laser signals, the Pro series provides accurate long-range distance measuring even under challenging outdoor sunlight conditions, offering advanced indirect measuring features such as point-to-point, trapezium, auto height to measure inaccessible distances such as roofs, pitches, buildings, tree heights and ground elevations from a remote place, making it perfect for construction measurement and landscape surveying.



P9



S7

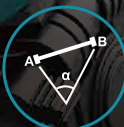
P9

LASER DISTANCE METER FOR SURVEYING & MAPPING

The P9 LDM is the epitome of top-of-the-line measuring devices, built to meet the demands of professionals working on outdoor large, active, and complicated job sites.



Ultimate
Performance
Under Daylight



Point-to-Point
Measurement



4X
Magnification



Viewfinder
Camera

P9

- Range: 985ft(300m)
- Accuracy: $\pm 1/16"$ (2mm)
- 4X Magnification
- Data storage: Up to 1,000 Groups
- Built-in 360°inclinometer
- IP65

- L * W * H: 130*54*28mm
- Net Weight: 190g



The Mileseeey P9 laser measure sets a new standard for advanced laser precision. With a remarkable 980ft range, it excels in both indoor and outdoor measurements. Powered by advanced patented outdoor technologies, it ensures accurate and stable results in any environments. The Point Viewfinder enables precise locking of laser dot even under bright sunlight.

ACCURACY TO ANOTHER LEVEL

The patented Powerburst & PowerChirp technology in the laser measure effectively eliminates environmental interference to laser signals. This advanced technology ensures greater accuracy and reliability in outdoor measurements by minimizing the impact of external factors such as dust, humidity, reflection and other ambient conditions.



VIEWFINDER CAMERA

The 4x zoom viewfinder camera allows for precise targeting and alignment of the laser beam, enabling precise measurements even over long distances. The camera provides a clear visual representation of the target, ensuring accurate positioning of laser dot and reducing the chances of errors.



ADVANCED MEASURING FEATURES

The advanced indirect measuring features of P9, like point-to-point, trapezium, auto height, triangular area, and cylindrical volume, enable precise measurements of complex shapes and structures, allowing for accurate calculations without physically accessing hard-to-reach areas, making the laser measure a perfect tool for professionals in construction, building, and surveying.



UNPRECEDENTED MEMORY STORAGE

A large memory storage capacity of up to 1,000 groups allows for extensive data collection without the need for frequent transfers or deletion of measurements.



PRODUCT PROFILE



Model	P9
Range	985ft(300m)
Accuracy	±1/16" (±2mm)
Display	3" HD IPS Display
Screen Rotation	✓
Viewfinder Camera	✓
Magnification	4X
App Connectivity	✓
Point to Point(P2P)	✓
Measuring Reference	Front/Tripod/Rear
Units	m/ft/in/''
Screenshot Storage	100 Sets
Memory	1000 Sets
Waterproof	IP65
Laser Class	2
Laser Type	630-670nm, < 1mW
Battery Type	3*AAA NI-MH Rechargeable Batteries,3.6v
Dimension	130*54*28mm
Weight	190g

S7

PROFESSIONAL LASER DISTANCE METER

A cutting-edge 330ft laser measure series well-suited for large and complicated job sites where precise and accurate measurements are crucial.



Viewfinder Camera



Point-to-point Measurement



IP65 Protection



Display Rotation

S7 (Camera Version)

- Range: 330ft(100m)
- Accuracy: $\pm 1/16"$ ($\pm 2\text{mm}$)
- Viewfinder Camera
- Built-in 360° Inclinometer
- IP65
- App Connectivity

- L * W * H: 120*56.5*27mm
- Net Weight: 123g



With a total of 14 measurement modes, Intellipivot p2p technology & App connectivity, IP65 protection, drop tested at 1 meter, a bright LCD screen, and an extra-long range at up to 330ft(100m), the Mileseeey S7 camera version is truly crafted for professionals to measure tasks on outdoor complicated job sites that require a high performance robust laser distance measure.

POINT VIEWFINDER WITH CAMERA

The built-in viewfinder camera (2x zoom digital camera) with on-screen aiming reticle ensures you to find the laser spot with ease and take accurate outdoor measurements confidently even when working in bright sunlight conditions.



HUMANIZED UI

The S7 series is designed with a humanized user interface with intuitive navigation menu. A auto rotation mode allows the screen to automatically switch to landscape display if placed horizontally. Users can easily toggle between white text and black text, ensuring optimal readability.

P2P TECHNOLOGY(Camera version)

A 360 ° high accuracy tilt sensor & integrated Intellipivot™ allow you to measure distance between any two points (p2p technology) from remote locations in a quick, accurate and safe way.



TIME- DELAYED MEASUREMENT

The delayed measurement is ideal for precise aiming at long distances. It avoids shaking of the device when pressing the measurement key, allowing users to stabilize the laser measuring device, resulting in more accurate and precise measurements.



PRODUCT PROFILE



Model	S7 (Camera version)
Range	330ft(100m)
Accuracy	± 1/16" (±2mm)
Display	2.4" IPS Display
Screen Rotation	✓
Viewfinder Camera	✓
Magnification	2X
App Connectivity	✓
Point to Point(P2P)	✓
Measuring Reference	Front/Tripod/Rear
Units	m/ft/in/ ' ' "
Memory	1000 set
Waterproof	IP65
Laser Class	2
Laser Type	630-670nm,< 1mW
Battery type	3*AAA NI-MH Rechargeabe Batteries,3.6v
Dimension	120*56.5*27mm
Weight	123g



Model	P9	S7 (Camera Version)
Range	985ft(300m)	330ft(100m)
Accuracy	±1/16" (±2mm)	± 1/16" (±2mm)
Display	3" HD IPS Display	2.4" IPS Display
Screen Rotation	✓	✓
Viewfinder Camera	✓	✓
Magnification	4X	2X
App Connectivity	✓	✓
Display Brightness	✓	✓
Point to Point(P2P)	✓	✓
Stake Out	✓	✓
Time-Delayed Measurement	✓	✓
Constant Settings	✓	✓
Tilt Sensor	✓	✓
Wireless Charging	✓	x
Screen Rotation	✓	✓
Measuring Reference	Front/Tripod/Rear	Front/Tripod/Rear
Units	m/ft/in/ ' "	m/ft/in/ ' "
Screenshot Storage	100 Sets	x
Memory	1000 Sets	1000 Sets
Waterproof	IP65	IP65
Laser Class	2	2
Laser Type	630-670nm, < 1mW	630-670nm, < 1mW
Battery type	3*AAA NI-MH Rechargeable Batteries,3.6v	3*AAA NI-MH Rechargeable Batteries,3.6v
Dimension	130*54*28mm	120*56.5*27mm
Weight	190g	123g

SEE MILES AWAY

**ILLUMINATE
THE UNSEEN**

HANDHELD THERMAL IMAGING

Mileseey's handheld thermal cameras offer a range of resolutions, ensuring clear visualization of temperature in both detected targets and the surrounding environment. With no loss of details even in darkness, these cameras provide comprehensive control, making them ideal for industrial applications and fever screening. The output data can be conveniently analyzed using intelligent software, facilitating efficient troubleshooting and accurate fever detection. These portable cameras swiftly identify electrical failures, overloads, and individuals with fevers, making them a valuable tool for enhanced safety and precise temperature assessment.



TR10



TR384E & TR384C



TR256C & TR256 & TR120

TR10

HANDHELD THERMAL IMAGER

A powerful thermal imager boasting a suite of features designed for efficiency and effectiveness in maintenance and inspection tasks, making temperature detection more accurate and user-friendly.



2.8" Color LCD Display



Wide Temp Measuring Range



Auto Hot & Cold Spot Tracking



Portable Design



TR10

Temp Measuring range:-20°C to 550°C
NETD:<50mk
Super Resolution:240X240
Frame Rate:25Hz
IP Rating: IP54

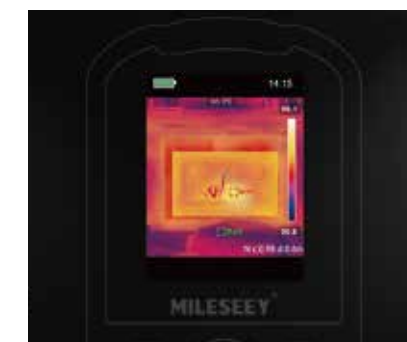
- L * W * H: 224*91.6*76mm
- Net Weight: 400g



The TR10 thermal imager is a highly versatile and powerful tool for professionals in maintenance and inspection, with the capacity to capture and store up to 30,000 images. This is further complemented by USB data transfer, and auto tracking of critical temperatures. It supports customizable temperature alarms and measures temperatures up to 550°C.

PREMIUM IR IMAGE ENHANCEMENT TECHNOLOGY

Bothered by blurry and laggy imaging? Get high-quality and continuous thermal images with TR10! Featuring Mileseeey's Premium IR Image Enhancement Tech, the TR10 can present clear and cohesive images with an IR resolution of 192x192 and a 25Hz frequency.



2.8 INCH LCD SCREEN

Thanks to the 2.8-inch LCD screen with a resolution of 240x240, which makes thermal images and data crystal clear and easy to read.

50*50 HFOV

Tired of the monotony of repetitive testing? Try the TR10's one-time large-area measurement! The TR10 offers a 50° x 50° field of view, allowing you to measure the entire surface in one go, thus enhancing your work efficiency.



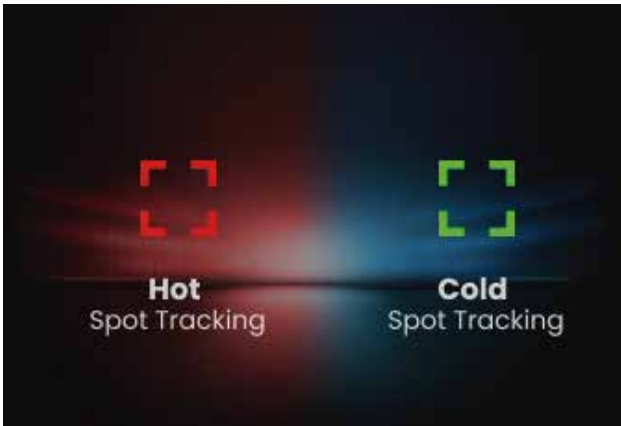
AUTO IMAGING SAVING

The TR10 is equipped with the most advanced AI-powered AutoAlarm technology, which automatically triggers an alarm and saves images upon detecting abnormal temperatures in the surroundings, allowing you to spot any issues immediately and review them.



AUTO HOT AND COLD SPOT TRACKING

To enhance diagnostic capabilities and reduce human errors, the TR10 can automatically identify and lock in the highest and lowest temperature points within the scene, covering a wide temperature range from -20°C to 550°C (-4°F to 1022°F).



PRODUCT PROFILE



Model	TR10
Super Resolution	240x240
Size	2.8 inch LCD screen
Frame Rate	25 Hz
Focal Length	1.35mm
Field of View(FOV)	50°× 50°
Accuracy	±2 °C or ±2% (whichever is greater)
Object Temperature Range	-20°C to 550°C
Minimum Imaging Distance	0.1m
NETD	< 50mK
Palettes	7
Type of Focus	Fixed
IP Rating	IP54
Connecting Solution	USB-C
Battery	Rechargeable 26550 battery
Battery Runtime	>8 h
UVC Projection	✓
Picture Output	✓
Memory	4 GB built-in EMMC
Dimensions	224x91.6x76mm
Weight	400g



TR384E & TR384C

PROFESSIONAL THERMAL IMAGING

Infrared Image resolution as 384*288, Optional functions for TR384:
Dual-camera for infrared or visible light, Laser Measure, GPS Positioning
and WIFI Projection



High Thermal
Resolution



Supports PC & Mobile
Software Analysis



APP
Supported



Laser Distance
Measure

TR384E & TR384C

IR Resolution: 384*288
Display Resolution: 640*480
Field of View (FOV) : 28°x21°
Temperature Range: -20°C ~ 550°C (-4°F ~ 1022°F)
Accuracy: ±3°C(±5°F)
Display: 3.5" LCD Display

- L * W * H: 238*95*85.5mm
- Net Weight: 555g



The TR384 thermal camera is a versatile device that offers dual-camera functionality for both infrared and visible light imaging. Additionally, it includes advanced features such as laser measure, and screen projection on PC terminals, making it a comprehensive thermal camera that combines multiple useful functions for efficient and effective thermal imaging tasks.

VISIBLE LIGHT CAMERA

Mileseeey TR384 infrared thermal scanner, designed with infrared, visible light and automatic hot/cold spot tracker, providing people with Visible Light Camera.



6 COLORS PAlettes | ADJUSTABLE EMISSIVITY

Warning for hot/cold temperature, 6 color palettes - High Resolution Rainbow, Hot Red, Lava, Rainbow, Iron Red, White Heat for clearer view and easier analysis.

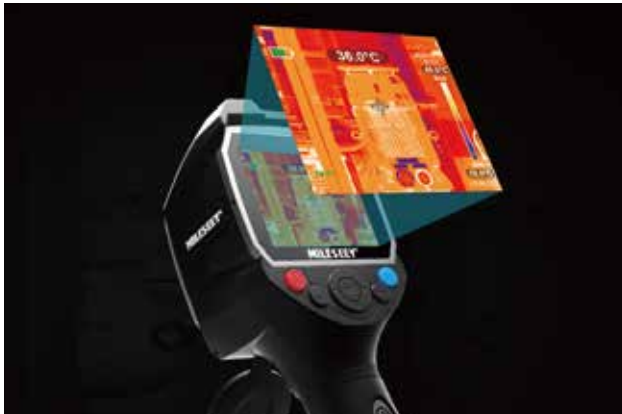
AUTO HOT/COLD SPOT TRACKER

Quick scan and inspection warning for hot/cold temperature. Wide temperature range: the thermal infrared camera can measure from-20°C to 550°C (-4°F ~ 1200°F). Big memory with 2000 pictures.Rechargeable Lithium Battery.



3.5 INCH COLOR LCD HIGH DISPLAY RESOLUTION

The infrared thermometer camera TR384 With wide field view of 28°x21°, displays resolution 384*288 and the visible light resolution 640*480, delivers super high-resolution thermal imaging



LASER MEASURE FUNCTION FOR TR384 ONLY

Not only detecting and imaging by infrared technology, laser measure is available to find the exact range from the objective



PRODUCT PROFILE



Model	TR384C	TR384E
IR Resolution	384*288	
Infrared Frame Rate	25Hz	
Pixel Size	12µm	
Thermal Sensitivity	<40mK	
Lens Focal Length	9mm	
Field of View(FOV)	28°x21°	
Visible Light	200W	
Visible Light Field of View	D:85° H:68° V:55°	
Temperature Analysis	Center Point/Highest Temp/Lowest Temp/ 3 Customizable Points	
Object Temperature Range	Low Range: -20~150 °C , High Range: 100~550 °C , Auto Range	
Temperature Accuracy	±2C° or ±2%	
Screen	3.5-inch LCD (640x480)	
Image Mode	Infrared, Dual-Light Fusion, Visible Light, Picture-in-Picture	
Color Palette	White Hot, Black Hot, Lava, Iron Red, Rainbow, High Contrast Rainbow, Black Red	
Operating Temperature	-10 to +50 C	
Digital Zoom	4X	
Timer Capture	Supported (With Temperature Data)	
Temperature Alarm	Image Popup, Flashlight Prompt	
APP Connectivity	✓	
PC Analysis Software	✓	
Laser Rang	MC-M1, Measuring Distance ≤30M	X
PC Analysis Software	Supports GLONASS/BD/GPS Yes, synchronized photo saving	X

TR256C & TR256 & TR120

THERMAL IMAGING CAMERA

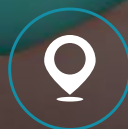
The TR256 handheld thermal camera with wide temperature measuring range, outstanding image quality, and large 3.5" HD screen that provides a spacious display area.



High Thermal Resolution



Screen Projection



GPS



Laser Distance Measure



TR256C

Thermal Resolution: 256*192
Display Resolution: 640*480
HFOV: 55.6°±2.8°
Temperature Range: -20°C ~ 550°C (-4°F ~ 1022°F)
Accuracy: ±3°C(±5°F)
Display: 3.5" LCD Display

- L * W * H: 238*95*85.5 mm
- WEIGHT: 555g



TR256

Thermal Resolution: 256*192
Display Resolution: 640*480
HFOV: 55.6°±2.8°
Temperature Range: -20°C to 550°C (-4°F to 1022°F)
Accuracy: ±3°C(±5°F)
Display: 3.5" LCD Display

- L * W * H: 238*95*85.5 mm
- WEIGHT: 540g



TR120

Thermal Resolution: 120*90
Visible Light Resolution: 640*480
HFOV: 50°±3°
Temperature Range: -20°C ~ 400°C (-4°F ~ 750°F)
Accuracy: -20°C ~ 0°C: ±5°C; 0°C ~ 100°C: ±3°C;
100°C ~ 120°C: ±5 %
Display: 3.5" LCD Display

- L * W * H: 238*95*85.5 mm
- WEIGHT: 540g



LIVE ANGLE DISPLAY FOR REAL-TIME ANGLE FEEDBACK

The TR256 is an advanced handheld thermal camera with a high-resolution thermal sensor of 256*192 pixels, offering outstanding image quality and facilitating efficient fault area inspections.



Extreme Temperature Alarm

The TR256 features automatic tracking of coldest and hottest spots, and effectively detects and locks min and max temperature. Users have the flexibility to personalize the threshold of high and low extreme temperature alarming points, allowing for tailored response to specific temperature environments.



TEMPERATURE MEASURING RANGE

With a wide temperature measuring range of -20°C-550°C(-4°F-1022°F), the TR256 boasts unrivaled versatility and accommodates a wide array of using scenarios, from extreme cold to high-heat conditions.



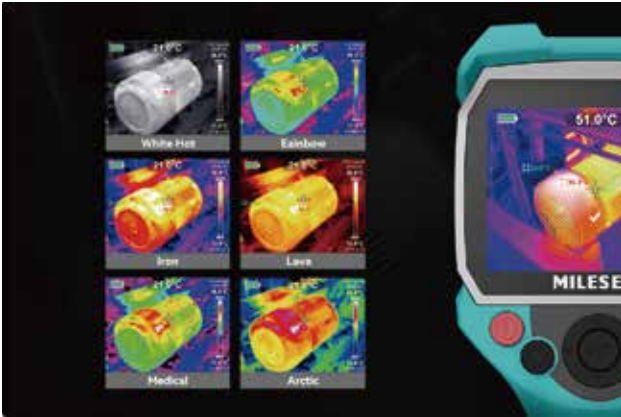
EMISSIVITY ADJUSTMENT

By fine-tuning the emissivity, the TR256 adapts to different surface materials and provides more accurate temperature readings and thermal image analysis. This feature is particularly useful when measuring the temperature of objects of diverse emissivity properties.



MULTIPLE COLOR PALETTES

The TR256 offers in total 6 high-resolution color palettes—Rainbow, White Hot, Iron, Arctic, Lava, Medical Treatment, allowing for easy display customization, clearer view, and more nuanced temperature interpretations in different scenarios.



EXCEPTIONAL DURABILITY

Engineered with IP65 protection, the TR256 maintains optimal performance, robustness and longevity, enabling it to withstand the exposure to dust, moisture, and other elements, ensuring consistent and reliable thermal imaging results. The exceptional resilience makes it a perfect choice for professionals in harsh environments.

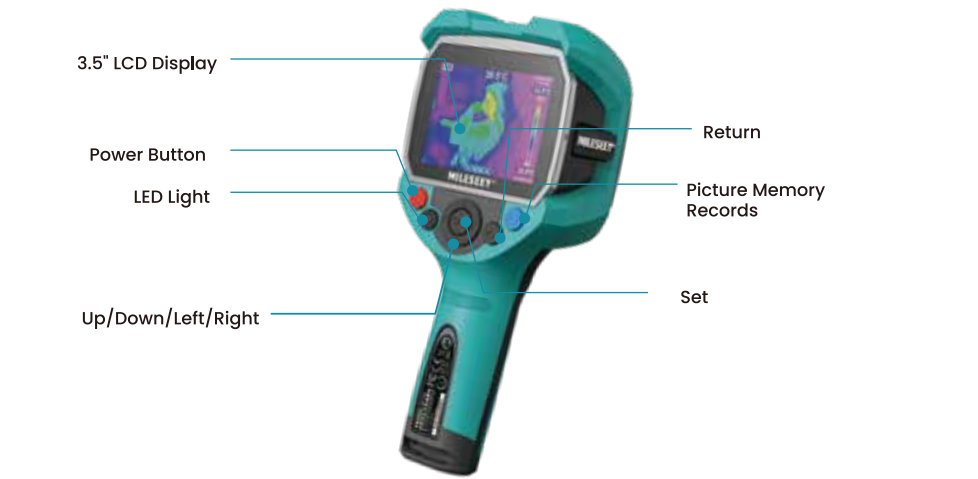


VERSATILE USES

The TR256 is an excellent choice for conducting thorough house inspections, detecting issues such as missing insulation, air leaks, and water damages, and conducting facility maintenance. It is also highly suitable for HVAC troubleshooting and conducting professional inspections of electrical and mechanical systems.



PRODUCT PROFILE



Model	TR256C	TR256	TR120
IR Resolution	256*192	256*192	120*90
NETD	<50 mK	<50 mK	<60 mK
Image Frequency	<20 Hz	<20 Hz	<20 Hz
Pixel Size	12 μm	12 μm	17 μm
Spectral Range	8 ~ 14 μm	8 ~ 14 μm	8 ~ 14 μm
Field of View (FOV)	56°x42°	56°x42°	50°*63.4°
Display	240*320 Resolution, 3.5"LCD Screen	240*320 Resolution, 3.5"LCD Screen	240*320 Resolution, 3.5"LCD Screen
Image Modes	Infrared, Visible Light	Infrared	Infrared
Color Palettes	White hot/Iron/Medical treatment/Arctic/Lava/Rainbow	White hot/Iron/Medical treatment/Arctic/Lava/Rainbow	Rainbow/Iron/White hot mode
Object Temperature Range	-20°C ~ 550°C	-20°C ~ 550°C	-20°C ~ 400°C
Accuracy	±3C°or±3%	±3C°or±3%	±5C°or±5%
USB Interface	USB-C	USB-C	USB-C
Battery Type	Rechargeable Li-ion Battery,5000mAh 3.7v	Rechargeable Li-ion Battery,5000mAh 3.7v	Rechargeable Li-ion Battery,5000mAh 3.7v
Protection Level	IP65	IP65	IP65
Drop Test Height	1.5m	1.5m	1.5m
Working Temperature Range	-20°C ~ 60°C	-20°C ~ 60°C	-10°C ~ 50°C
Storage Temperature Range	-40°C ~ 70°C	-40°C ~ 70°C	-40°C ~ 70°C
GPS	✓	X	X
WIFI	✓	X	X
Laser	✓	X	X

SEE MILES AWAY

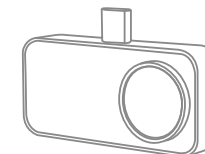
ILLUMINATE THE UNSEEN

CAMERA FOR PHONE

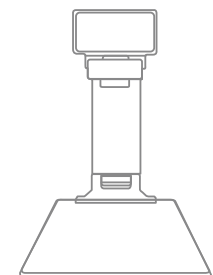
The Mileseey infrared thermal imaging cameras for Android offers clear display of infrared thermal images and enables fast image and digital video transmission. Its user-friendly and intelligent operation mode enhances usability, while its high mobility makes it suitable for measuring a wide range of temperature targets. The thermal infrared camera mobile accessory works as a perfect troubleshooting device in electrical inspection, building inspection, restoration, and HCAV repair. The compact and lightweight thermal imager that pairs with Android phones allows you to monitor temperature whenever and wherever.



TP2 PLUS



TR256i



TR256P

TP2 PLUS

THERMAL CAMERA FOR iOS AND ANDROID

The TP2 PLUS is a wireless thermal camera that connects to smartphones, enabling easy inspections of distant areas. It is ideal for conducting electrical checks, performing HVAC assessments, and identifying water leaks.



MATRIX IV Image Processing Algorithm



IR Resolution: 256x192



Dual Thermal & Visible Light Cameras



Wireless Connection with Smartphone

TP2 PLUS

- IR Resolution: 256x192
- Wide Temp Range: -20~550°C (-4°F ~ 1022°F)
- Wireless Connection with Smartphone
- MATRIX IV Image Processing Algorithm
- Dual Thermal & Visible Light Cameras

- L * W * H: 136 x 41 x 29mm
- Net Weight: 125g



Difficulty in scanning difficult-to-view, hard-to-reach areas? Not TP2 Plus. The TP2 PLUS is a wireless thermal camera that connects to smartphones, enabling easy inspections of distant areas. It is ideal for conducting electrical checks, performing HVAC assessments, and identifying water leaks.

INSPECT ANYWHERE

Designed to be portable and robust, the TP2 PLUS allows you to inspect any hard to view or reach areas by viewing on mobile devices via wireless connection. It is your perfect companion for electrical inspection, evaluation for HVAC, and discovery of water leakage.



TOP-QUALITY THERMAL IMAGES & VIDEOS

Thanks to the advanced 256x192 thermal sensor, TP2 PLUS produces detailed thermal images and videos, all captured and saved to mobile devices, allowing you to quickly identify the location of potential faults or problems.

CUTTING-EDGE IMAGE

The leading-edge MATRIX IV Image Processing Algorithm refines image quality by enhancing the image detailing, ensuring depth in thermal imaging reading.



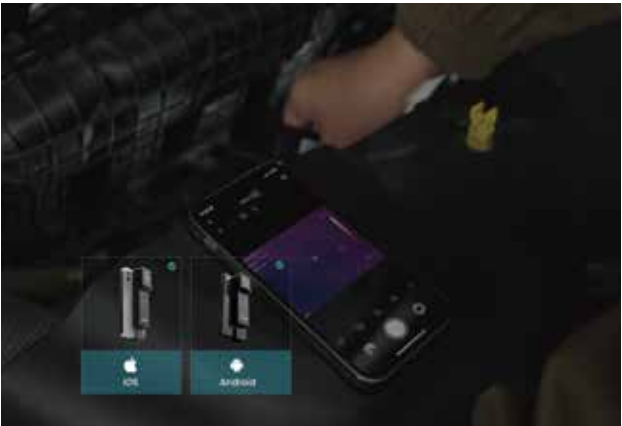
VISIBLE LIGHT & INFRARED DUAL CAMERAS

The TP2 PLUS offers dual Visible light & infrared dual cameras where visible light can be fused into thermal images in real time. The result is highly elevated visual clarity of thermal imaging, providing quicker understanding of the situation.



UNIVERSAL COMPATIBILITY

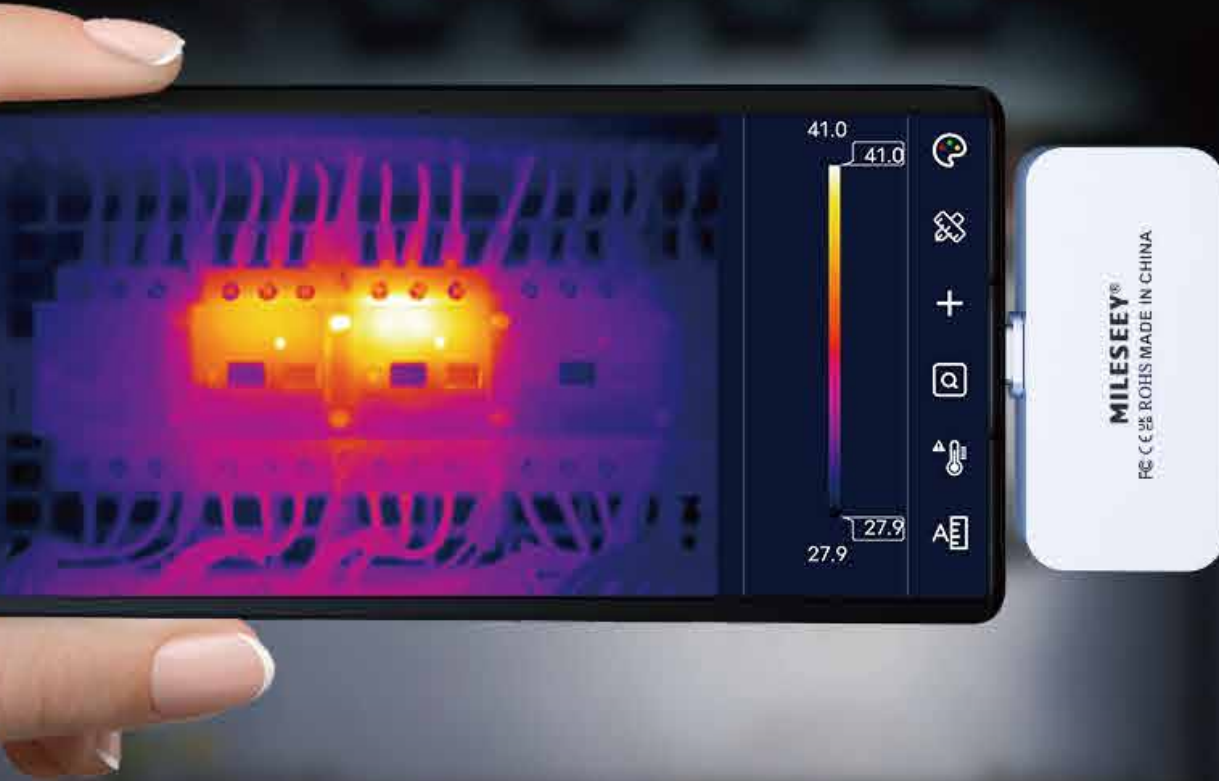
TP2 PLUS offers compatibility with wide-range iOS or Android devices, making professional-grade thermal imaging accessible right from your smartphone. The User-friendly app interface simplifies thermal imaging analysis for both professional and personal use.



PRODUCT PROFILE



Model	TP2 PLUS
IR Resolution	256*192
NETD	40mk
Frame Rate	25 Hz
Pixel Size	12 μm
Focal Length	3.2mm
Lens Aperture	F1.0
Field of View (FOV)	56°*42°
Visual Camera	200w
Image Modes	Infrared, Visible Light, Picture in Picture, Fusion
Color Palettes	White Hot/Black Hot/Rainbow/Rainbow HC/Iron/Lava/RdGy
Object Temperature Range	- 20~+150°C,+100~+550°C
Accuracy	±2C°or±2%
Measurement Tools	Coldest And Hottest Points, Central Point, And Custom Measurements (Supports 3 Custom Points, 3 Custom Lines, 3 Custom Frames)
Battery Life	3 Hours
Weight	125g
Dimension	136*41*29mm



TR256i

THERMAL CAMERA FOR ANDROID

The TRi series is a small, lightweight & compact on-the-go thermal imaging device designed to transform your android cellphone into a thermal camera.



High Portability



Wide FOV of 56°x42°



-5°F~-1112°F Temperature-range



Multiple Palettes

TR256i

Thermal Resolution: 256*192
Field of View: 56°x42°
Temperature Range: -15°C ~ 600°C (-5°F ~ 1112°F)
Accuracy: ±2°C(±4°F)
Thermal Sensitivity: ≤50mK

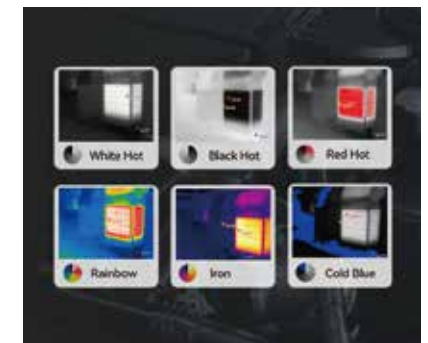


- L * W * H: 34*26*15mm
- Net Weight: 19g

Equipped With record-breaking 256*192 thermal imaging sensor with a heat sensitivity < 50mk, a high refresh rate of 25Hz, the TR256i diagnoses thermal problems with extra clarity and allows you to say "goodbye" to blurry images.

6 COLORS PALETTES ADJUSTABLE EMISSIVITY

6 Color Palettes – High Resolution
Rainbow, White Hot, Black Hot, Red Hot, Rainbow, Iron and Cold Blue, for Clearer Vision and easier Thermal Tracking High/Low Temperature Warning.

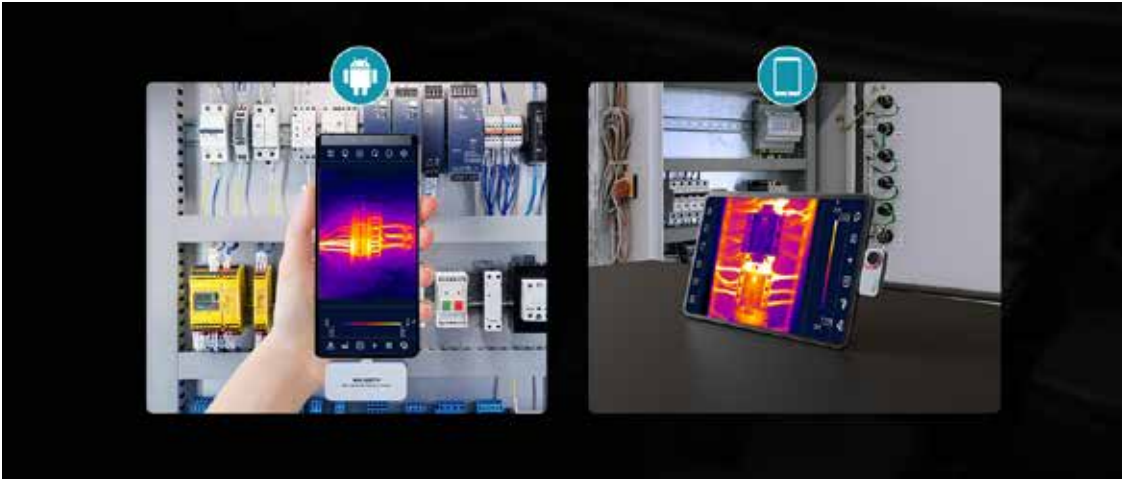


ULTRA-ACCURATE TEMP MEASUREMENT

The TR256i series measures temperatures from -15°C ~ 600°C (-5°F ~ 1112°F) with an extreme accuracy up to +/- 3.6°F (2°C). The thermal image provides high & low temperature scale (-20°-150° ; 150°-550°) selections based on the scene to maximize the imaging effects.

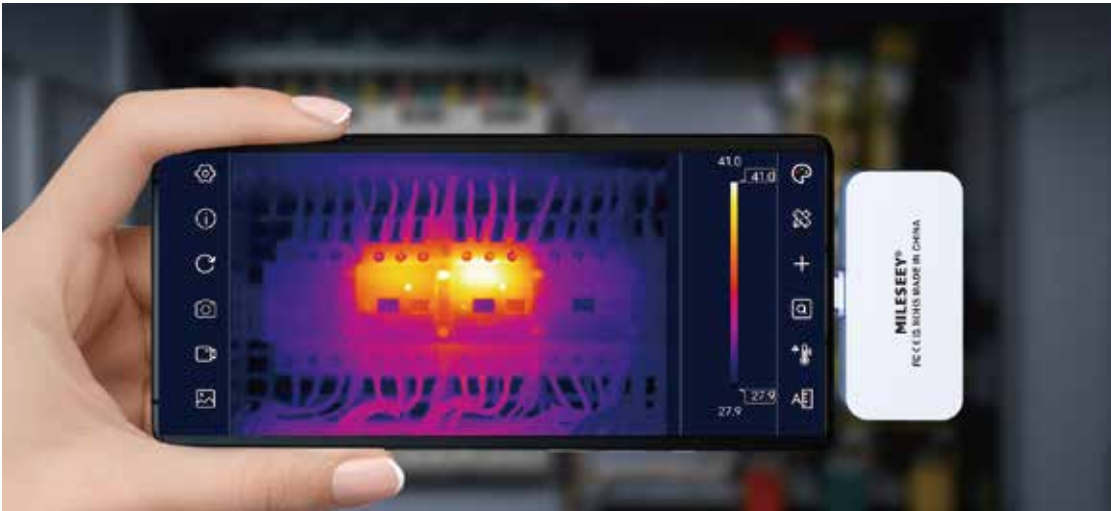
SMART TEMPERATURE ANALYSIS APP

The TR256i series also has smartphone App support that offers innovative temperature analysis. It uses point, linear, and regional temperatures to help you determine low, high, and core temperatures with self-defined points as a sound alarm standard.

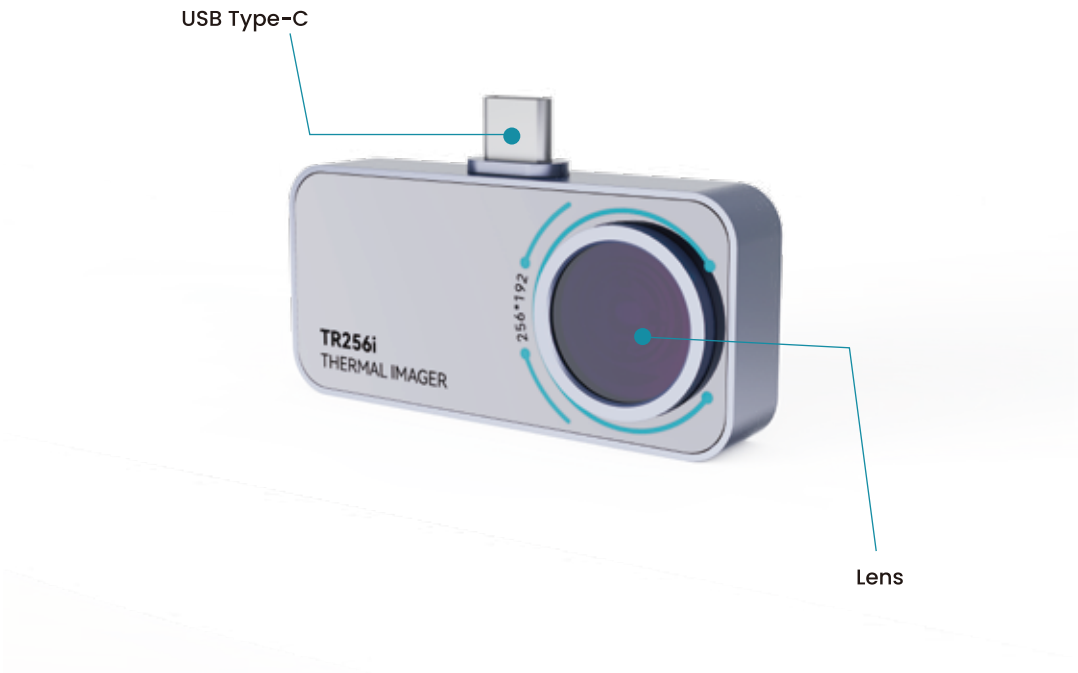


VERSATILE SETTINGS

The TR256i series offers various settings. The emissivity adjustment enables the device to compensate measuring based on emissivity value and offer the most accurate temperature readings. A temperature bar on screen enables adjustment of the temperature range via the bar slider.



INNOVATIVE DESIGN



Model	TR256i
IR Resolution	256*192
NETD	<50mK
Frame Rate	25 Hz
Wavelength	8-14 μm
Focal Length	3.2mm
Field of View (FOV)	56°*42°
Color Palettes	Iron, White Hot, Black Hot, Rainbow, Red Hot, Cold Blue
Object Temperature Range	-15°C ~ 600°C
Accuracy	±2C°or±2%
Measurement Tools	Center Spot, Hot Gpot,Cold Gpot
Weight	19g
Dimension	34*26*15mm

TR256P

CUTTING-EDGE PCBA THERMAL INSPECTION

The TR256P is an advanced thermal camera kit specifically tailored for accurate inspection of printed circuit boards assembly(PCBA) and tiny chip-level components. With an integrated stand, It allows engineers to quickly detect abnormalities in the circuit board, unlocking a new level of R&D and troubleshooting efficiency.



PCBA
Thermal Inspection



30mm~150mm
Inspection Range



Easy Connection
to PC & Mobile



Supports PC & Mobile
Software Analysis

TR256P

Thermal Resolution: 256x192
Inspection Range: 30mm~150mm
Easy Connection to PC & Mobile
Temperature Alarm

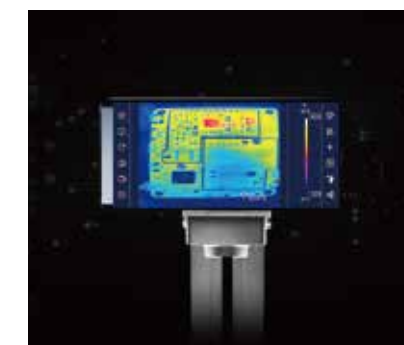
- L * W * H: 50*150*230mm
- Net Weight: 1200g



The TR256P is an advanced thermal camera kit specifically tailored for accurate inspection of printed circuit boards assembly(PCBA) and tiny chip-level components. With an integrated stand, It allows engineers to quickly detect abnormalities in the circuit board, unlocking a new level of R&D and troubleshooting efficiency.

FLEXIBLE INSPECTION DISTANCE

The focusing distance between the measurement objects and the camera is flexible, ranging from 100mm to 150mm. Equipped with an optional macro lens that can be added to the base camera, you can observe object at a focusing distance as short as 30mm, perfect for inspecting small targets.

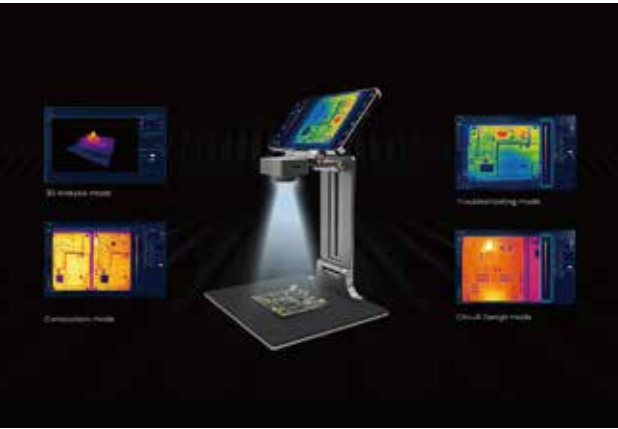


EXCEPTIONAL CLARITY OF THERMAL IMAGERY

Boasting an impressive thermal resolution of 256x192 pixels and advanced thermal image processing algorithms, the TR256P ensures clear and detailed thermal imagery, making your inspections more precise and more efficient.

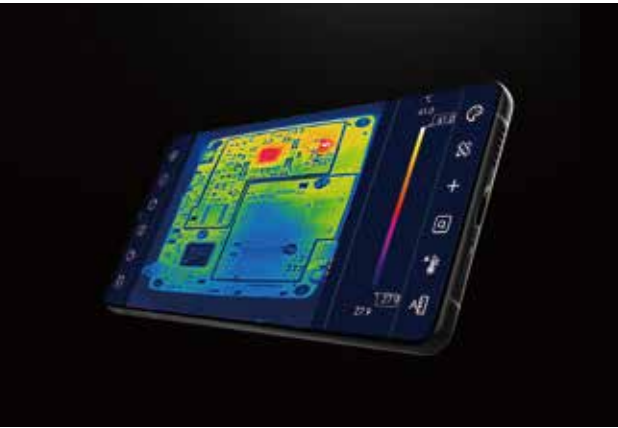
VERSATILE PC SOFTWARE ANALYSIS

This USB-connected PC software features multiple analysis modes designed for diverse PCB R&D needs. A troubleshooting mode for fast fault identification on circuit boards, a 3D Analysis mode for intuitive visualization of thermal distribution to detect more subtle current changes, and a Comparison mode between functional and faulty PCBs speeds up fault detection.



EASY CONNECTION TO MOBILE TERMINALS

The device can be easy connected to mobile terminals of Android with an App standing out with various analysis features such as point, line, and zone temperature measurement, taking thermal pictures and videos saved to your mobile device for follow-up analysis.

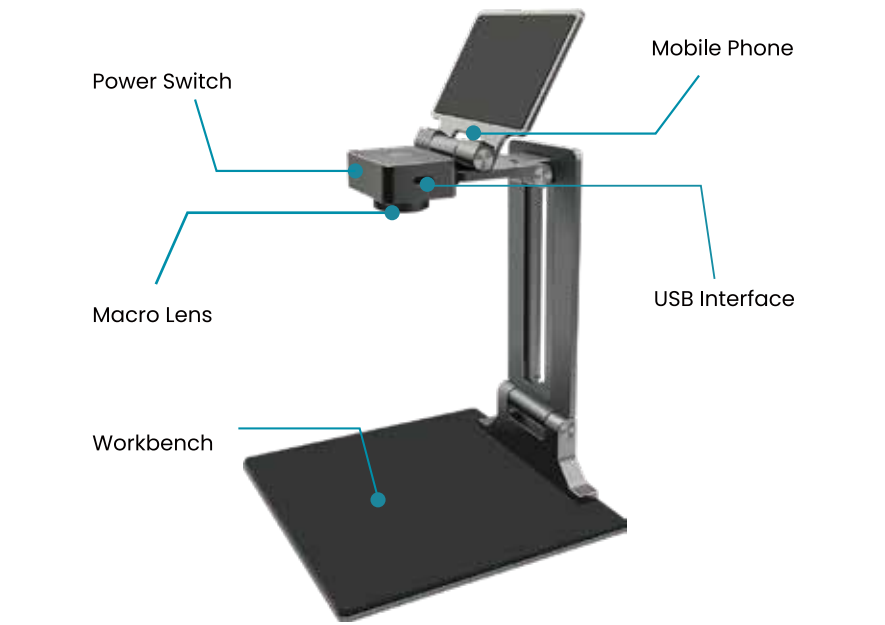


TEMPERATURE ALARM

The device automatically tracks the highest, lowest and center temperature and allows you to set the extreme temperature threshold and sounds alarms once the temperature measured exceeds the threshold, applicable both in PC software and mobile APP, give immediate notice of the problem.



PRODUCT PROFILE



Model	TR256P
Resolution	256x192
Frame Rate	25Hz
Object Temperature Range	-15°C ~ +600°C (5°F ~ +1112°F)
Lens Focus of View	56°x42°
Temperature Measurement Distance	100mm – 150mm (can be observed at 30mm using a macro lens)
Device Interface	USB Type C
Image Storage Format	JPG
Video Storage Format	MP4
Input Voltage	DC 5V
Storage Temperature range	-20°C ~ 60°C
Working Temperature	0°C ~ 50°C
Humidity	95% relative humidity