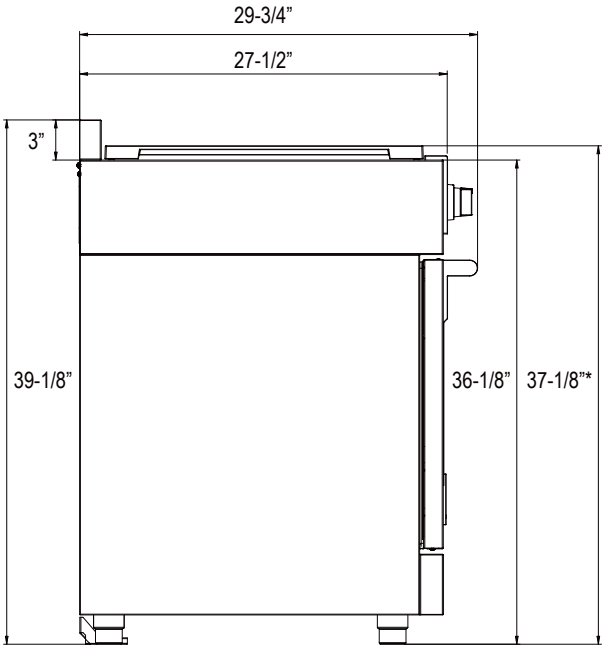
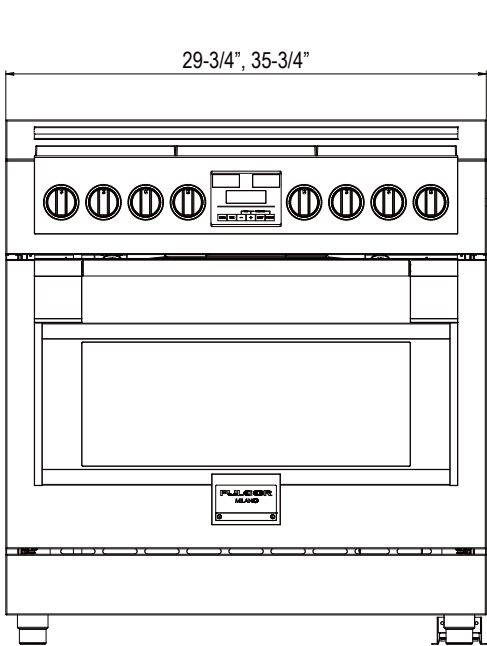




# MEET THE **SOFA** RANGE

**FULGOR**

MILANO



\*Dimension includes cast iron grates



# SOFIA

YOUR LIFE | OUR PASSION

## FULL GAS



30" MODEL F6PGR304S1  
36" MODEL F6PGR366S1

## DUAL FUEL



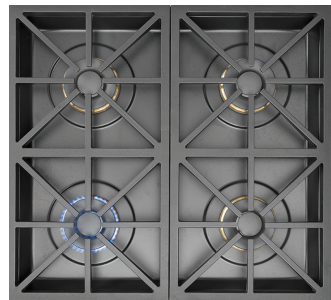
30" MODEL F6PDF304S1  
36" MODEL F6PDF366S1

## INDUCTION



30" MODEL F6PIR304S1

## GAS COOKTOP



### EVERY BURNER

has dual flames and can achieve a true low simmer up to a maximum 18,000 BTU/hr



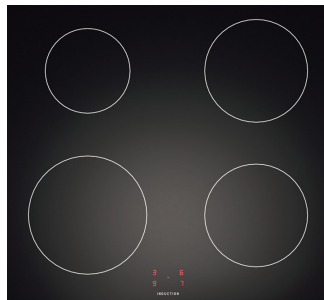
### AUTOMATIC REIGNITION

if a flame goes out the burner automatically reignites, no thermocouple needed

### SOLID BRASS BURNER RINGS

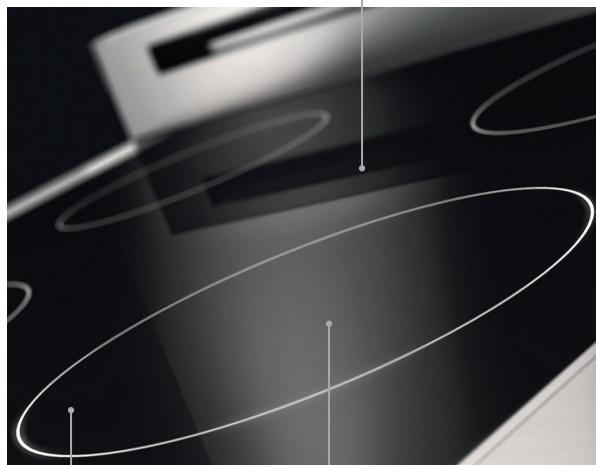
ensure uncompromising performance, durability and class

## INDUCTION COOKTOP



### HIGH EFFICIENCY

80% of input energy is transferred to cookware



### POT DETECTION SYSTEM

burners will not turn on if cookware is not present

### BOOSTER FAST/BOIL

function to rapidly boil water

## CHOOSE YOUR SHADE

Optional door kits are available in a variety of colors.



**GLOSSY BLACK**  
**RAL 9004**  
Model PDRKIT30BK  
Model PDRKIT36BK



**GLOSSY WHITE**  
**RAL 9016**  
Model PDRKIT30WH  
Model PDRKIT36WH



**GLOSSY RED**  
**RAL 3003**  
Model PDRKIT30RD  
Model PDRKIT36RD



**MATTE BLACK**  
**RAL 9004**  
Model PDRKIT30MB  
Model PDRKIT36MB



**SLATE GREY**  
**RAL 9007**  
Model PDRKIT30MG  
Model PDRKIT36MG



**STAINLESS STEEL**  
included with range

### FAST PRE-HEAT

achieve 325° F in the 30" model in as little as 7 minutes

### WHITE LED DISPLAY

easy to use and easy to read touch display



### SOFT CLOSING DOOR

with cool touch ensures the oven door is cool even when self-cleaning

### TRUE DUAL CONVECTION

two dedicated fans operate simultaneously to offer unsurpassed convection baking results

### XL CAPACITY OVEN

4.4 cu/ft (30")  
5.7 cu/ft (36")

### TELESCOPIC RACK

with chrome finish

Dual Fuel model shown