

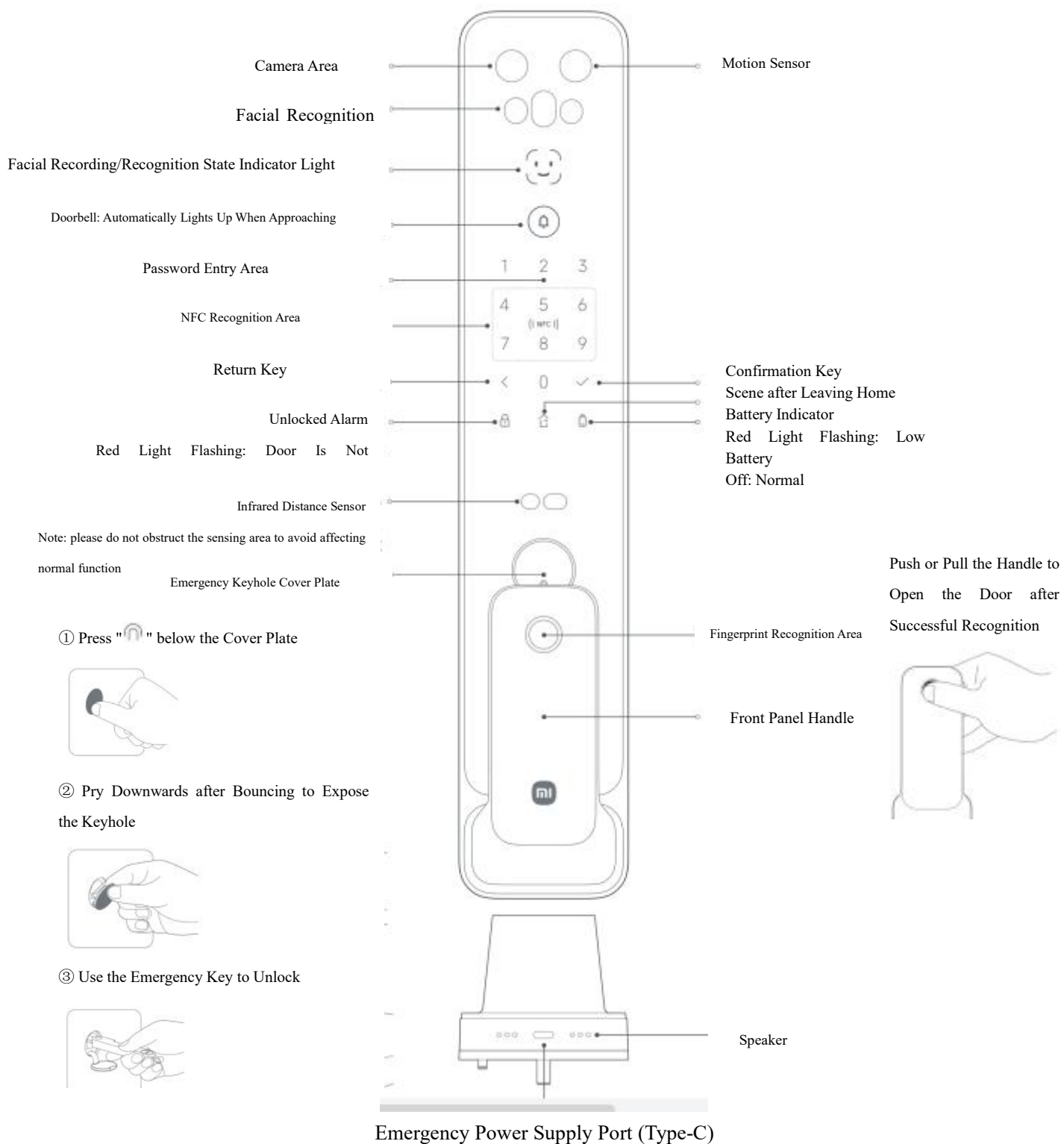
# Xiaomi Smart Door Lock

## Operating Manual

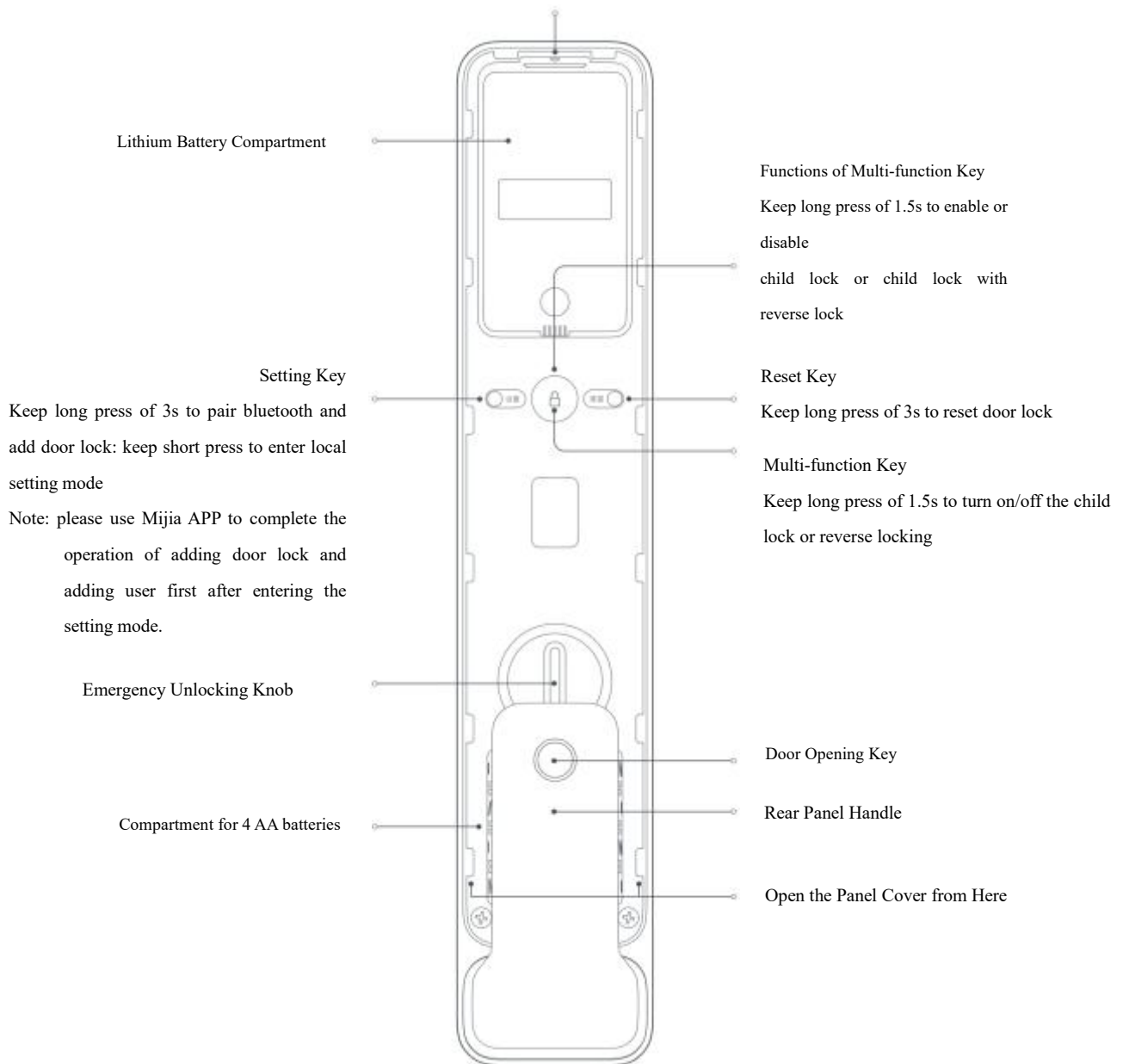


Xiaomi Smart Door Lock G500 is an IoT smart door lock that supports multiple unlocking methods such as facial recognition, fingerprint, password, temporary password, NFC, mobile phone bluetooth and emergency key, etc., supporting remote abnormal alarm, remote viewing of unlocking record, reverse locking, and child lock mode, etc. By virtue of integrated smart camera and screen, functions of stay monitoring recording, door lock abnormal state recording, video doorbell and screen viewing of the outside scene could be implemented. Mijia APP allows door lock to be used in conjunction with a variety of Mijia smart devices to achieve rich smart home applications such as smart linkage control and linkage alarm, which comes with an induction electronic doorbell.

- \* Remote abnormal alarm, remote viewing of unlocking record, smart linkage and other relevant functions need to be used in conjunction with devices with bluetooth gateway functionality or to maintain a successful network connection state of the device.
- \* Mijia APP may be used to customize the key inside the door, defining it as child lock or a combination of child lock with reverse lock.

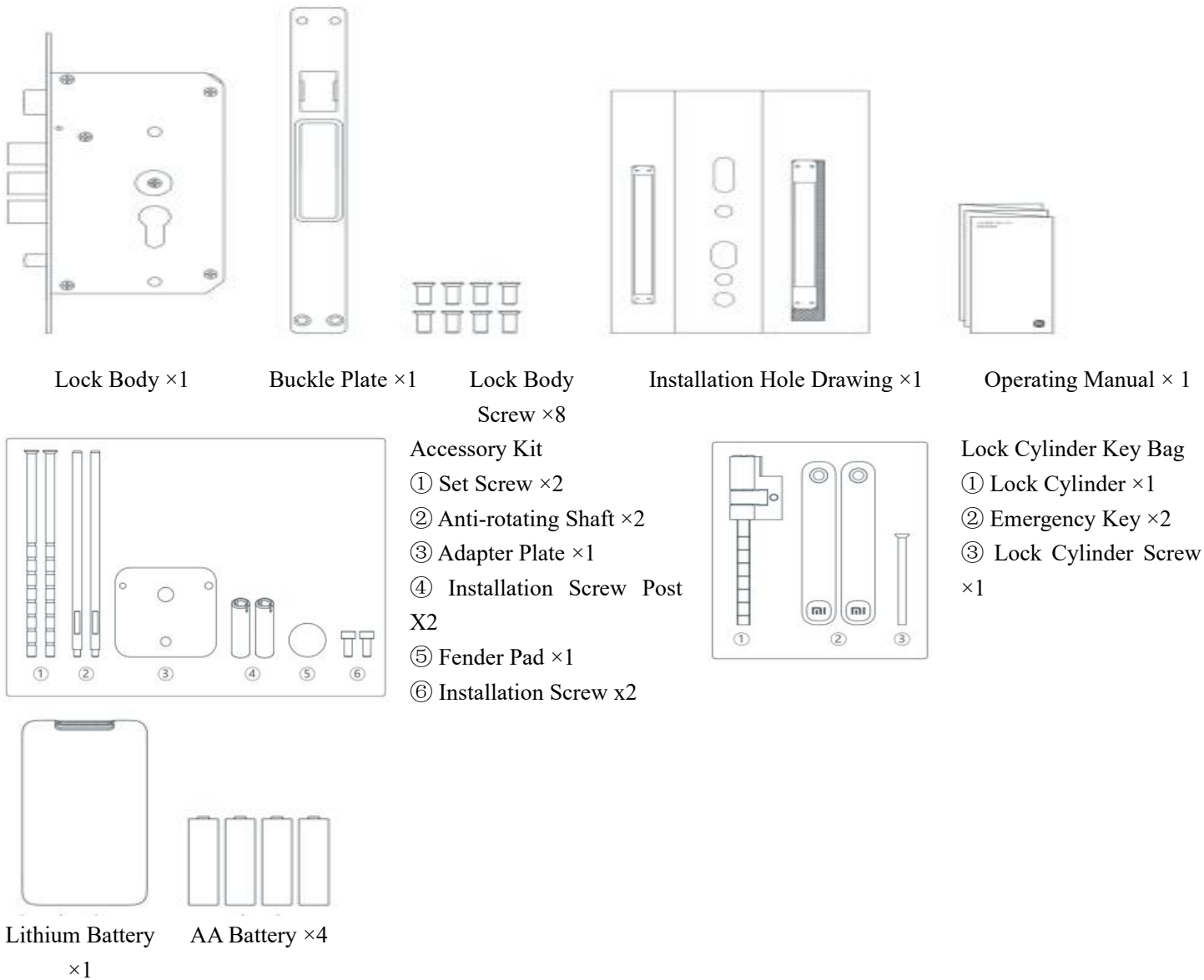


## Remove the Lithium Battery from Here



Note: the illustrations of products, accessories, and user interface in the manual are schematics for reference only; due to update and upgrade, the actual product may be slightly different from the that in the schematic diagram, please refer to the actual product.

02 Parts List



03 Door Lock Installation

Installation process of door lock requires the use of hazardous professional tools, please be sure to employ professional personnel for installation.

If the package you have purchased includes the on-site installation service, please scan the QR code on the right to reserve the installation service or consult with the customer service.



Please scan the code to schedule installation service or watch the video to learn more about product information

04 Use Preparation

Please open the cover plate of rear panel, and install the lithium battery and 4 AA batteries separately.

Note: there may be leakage when using a regular AA battery for a long time, it is recommended to check the condition of the AA battery every three months to avoid damaging the door lock due to leakage.

Note: please charge the lithium battery timely when the battery is low, otherwise the battery will be depleted, which will result in the inability to use facial recognition to open the door. Please use a power adapter with an output parameter of 5V/2A for charging, exceeding this parameter may cause damage or danger to the door lock. Our company does not assume any legal responsibility for battery damage, leakage, or fire hazard caused by failure to follow the manual.

Please remove the sticker in the camera area and keep the lens clean to ensure that the camera will capture images clearly.

## 05 Quick Setting

### ① Add device

Connected to Mijia, this product could be controlled through Mijia APP and interconnected with other products.



F148B3B3



Connected  
Mijia APP

Scan the QR code to download and install Mijia APP, and users who have installed Mijia APP will directly enter the device connection page, or search for "Mijia" in the app store to download and install Mijia APP. Open the homepage of Mijia APP, click on the "+" in the upper right corner of the page, and follow the app prompts to add the device.

Note: door lock will automatically connect to the bluetooth gateway device under the account after successful addition, without the need for configuration. Effective distance of bluetooth communication for door lock is 10m, and obstacles such as walls may affect the bluetooth communication distance.

Upgrade and update of Mijia APP may lead to slight variations from the above description in the actual operation, please operate based on the guide in the current Mijia APP.

### ② Add user

Open the door lock plugin in Mijia APP, and follow the prompts to add the first user (default is administrator).

Note: the door lock could be unlocked by any fingerprint without adding a user.

## 06 Daily Use

Front panel:

Successful unlocking: facial recording recognition state indicator light is white, indicating successful recognition, and there is a successful sound effect in non-silent state;

Failure unlocking: facial recording recognition state indicator light is red, indicating recognition failure, and there is a failure sound effect in non-silent state.

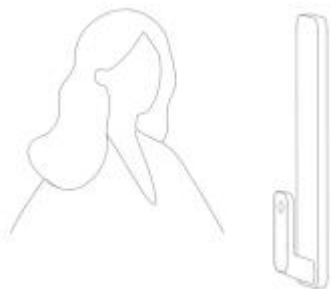
Rear panel:

Successful unlocking: success sound prompt in non-silent state;

Failure unlocking: state indicator light flashes red, accompanied by a failure sound prompt in non-silent state.

Face

unlocking



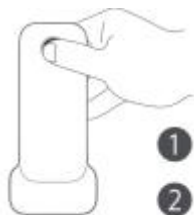
① After facial recording, naturally stand 0.6m in front of the door, face the door lock to start facial recognition after the face icon appears on the panel;

② Push/pull the handle to open the door after successful recognition.

Note: Facial recognition will be disabled after opening or closing the door (default 15s), if you need to use the facial recognition function, you may activate it by touching the password input area.

Fingerprint

unlocking



① Lightly press the finger with added fingerprint in the fingerprint recognition area;

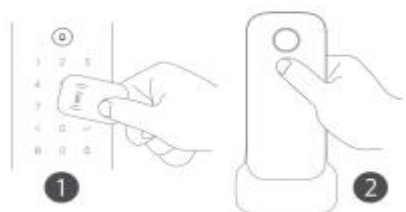
② Push/pull the handle to open the door after successful recognition.

Password  
unlocking



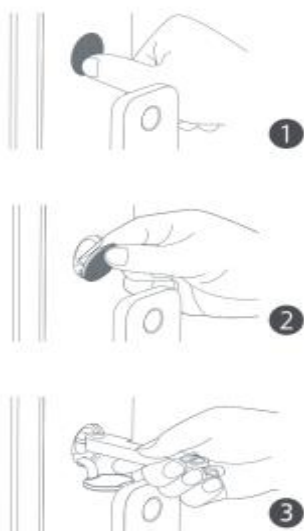
- ① Enter the added password, press the confirm key or wait for 1.5s;
- ② Push/pull the handle to open the door after successful recognition.

NFC  
unlocking



- ① Place the added NFC device close to the NFC recognition area;
- ② Push/pull the handle to open the door after successful recognition.

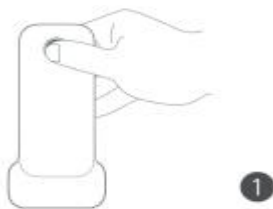
Emergency key  
unlocking



- ① Press "🔑" below the cover plate of emergency keyhole;
- ② Pry open the cover plate downwards after it pops up to expose the keyhole;
- ③ Use the emergency key to unlock.

Note: please do not leave the key inside the house, instead, choose a safe and accessible place to keep it safe for use in extreme situations.

Indoor  
unlocking



- ① Press the door opening key and push/pull the handle to open the door.

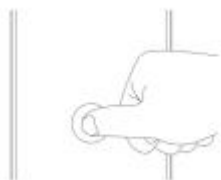
Indoor emergency  
unlocking



- ① Rotate the emergency unlock knob clockwise or counterclockwise to the maximum and keep the lock body in an unlocked state;
- ② Grab the handle and push/pull the door lock to open the door.

## Indoor multi-function

key



- ① Keep long press of multi-function key for 1.5s with an audio prompt when you need to activate the child lock or the child lock with reverse lock function. Keep long press of multi-function key for 1.5s to unlock the child lock or the child lock with reverse lock function.
- ② If the multi-function key is pressed for less than 1.5s, the state of the child lock or the child lock with reverse lock function remains unchanged.

Multi-function key function:

Child lock: only the emergency knob could be used to open the door indoors, or the child lock function could be turned off before using the handle to open the door.

Child lock with reverse lock: only the emergency knob could be used to open the door indoors, or the child lock with reverse lock function could be turned off before using the handle to open the door outdoors, and non-administrators are not allowed to open the door.

Note: for more operating manual and product information, please scan the QR code in the "Door Lock Installation" section of this manual, or follow the guidance and assistance in Mijia APP for operation.

## Screen on-off



- ① Press the screen on-off key to light up the rear panel screen;
- ② Press the screen on-off key to turn off the screen when the rear panel screen lights up.

Note: you could set the screen brightness time in Mijia APP.

## 07 Local Setting Mode

Briefly press the setting key under the lithium battery compartment of the door lock when it is not convenient to use the mobile app to set the door lock, and may perform the following operations after verifying the administrator's fingerprint or password:

Add/delete fingerprint;

Add/delete password;

Set door lock volume;

Set door lock voice language (supports Chinese/English).

Note: please use Mijia APP to complete the operation of adding door lock and adding user first when using the local setting mode for the first time, then make local settings for the door lock.

## 08 Declaration of Micro Power Short Distance Devices

(I) NFC technology adopted by this product meets the technical requirements of Class C devices for general micro-power devices in the *List and Technical Requirements of Micro-power (Short-range) Radio Transmission Devices*, and is a good solution to data transmission. Integrated antennas are adopted. Methods of control, adjustment and switching could be found in the product instructions;

(II) Users shall not change the usage scenario or service conditions, expand the transmission frequency range, increase the transmission power (including additional mounting of RF power amplifiers), or change the transmitting antennas arbitrarily;

(III) Neither harmful interference shall be generated for other legal radio stations, nor shall the protection be proposed to prevent the harmful interference;

(IV) It shall be able to bear the interference of industrial, scientific and medical (ISM) application devices radiating the RF energy or the interference of other legal radio stations;

(V) In case of any harmful interference for other legal radio stations, the use of it shall be stopped and shall not be resumed before the harmful interference is eliminated;

(VI) For the micro-power device used in the aircraft and radio observatory, meteorological radar stations, satellite earth stations (including measurement and control, distance measurement, reception and guidance stations) and other military and civil radio stations, as well as airport and other electromagnetic environmental protection areas that are specified in laws and regulations, relevant national regulations and standards, the regulations related to electromagnetic environmental protection and regulations of relevant competent departments of the industry shall be followed;



- (VII) It is forbidden to use any model remote control within a 5,000m-radius area with the central point of the airfield runway as the center;
- (VIII) Operating temperature of low-power devices is -10~55°C, with a dry battery powered by a 1.5V battery, a 5000mAh lithium battery, and a Type-C power supply of 5V=0.5A.

Remarks: Radio transmission equipment model approval code (CMIIT ID: 24) 115QQM090 of this product is displayed on the product nameplate, and the product nameplate information is presented on the silicone pad on the inner panel of the product.

09 Battery Safety Precautions

- Only batteries approved by the manufacturer are allowed to be used. Replacing batteries with the wrong model may render safety measures ineffective and pose risks such as explosions and fires.
- Please do not place the battery in extremely high temperature environments such as sunlight, fire, microwave ovens, ovens, etc., as it may cause explosions or leakage of flammable liquids or gases.
- Please do not disassemble, impact, squeeze or cut the battery, as it may cause an explosion.
- Please do not place the battery under extremely low pressure, as it may cause the battery to explode or leak flammable liquids and gases.
- If the battery experiences severe expansion, please do not continue to use it.
- Please do not swallow the battery, as it may pose a risk of chemical burns.
- If you believe that the battery may have been swallowed or placed in any part of body, seek medical assistance immediately.
- If the battery compartment is not securely closed, stop using the product and keep it away from children.
- Keep children away from new and used batteries.
- Please do not dispose of batteries in household waste and please follow the relevant national regulations for safe disposal of used batteries. Button batteries are included in this product, if swallowed, it may cause severe internal burns and potentially lead to death within 2 hours.

10 Basic Parameters

Product name: Smart Door Lock	Product model: XMZNMS09LK
Product size:	Product net weight: 4.0kg
401×76×21mm (front panel)	Environmental adaptability level: Level (GA374-2019)
401×76×31mm (rear panel)	Product safety level: Level B (GA374-2019)
Power supply mode: 4 AA batteries (specification: 1.5V battery)	Lock cylinder safety level: Level C
5000mAh lithium battery (specification: 7.4V)	Wireless connection: Bluetooth 5.0, Wi-Fi IEEE802.11
Type-C emergency power supply (5V=0.5A)	b/g/n/ax2.4GHz, NFC
CMIIT ID: 24J115QQM090	Lithium battery charging temperature: 0°C~55°C
Executive standard: GB21556-2008, GA374-2019	Working temperature: -10°C~55°C
Product code: DZFDS-L-B-I/XMZNMS09LK	Working humidity: 0~93%RH, no condensation

11 Warranty Description

Xiaomi Smart Door Lock G500 provides warranty services of repair, replacement and refund for this product in strict accordance with the *Law of the People's Republic of China on the Protection of Consumer Rights and Interests and the Product Quality Law of The People's Republic of China*, and the services are as follows:

Warranty period

- If any of the performance faults listed in the *Product Performance Fault Table* occur and are confirmed by Xiaomi After-sales Service Center within 7 days from the day you sign for this product, you could enjoy free return or exchange services;
- If any of the performance faults listed in the *Product Performance Fault Table* occur and are confirmed by Xiaomi After-sales Service Center within 8-15 days from the day you sign for this product, you could enjoy free exchange or repair services;
- If any of the performance faults listed in the *Product Performance Fault Table* occur and are confirmed by Xiaomi After-sales Service Center within 3 years from the day you sign for this product, you could enjoy free repair services;