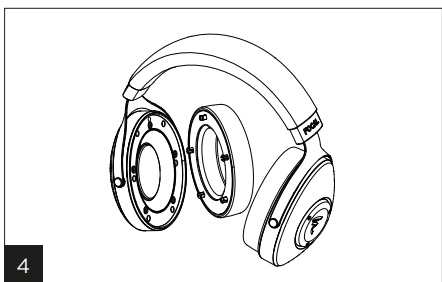
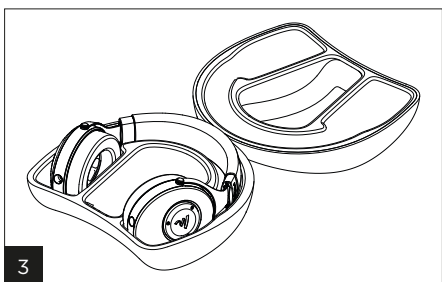
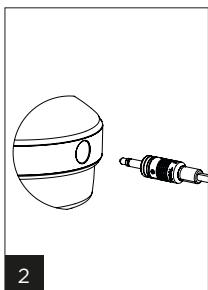
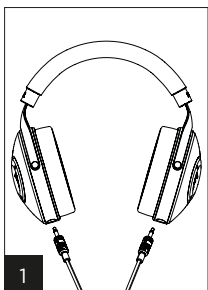


UTOPIA



USER MANUAL

Français
English
Deutsch
Italiano
Español
Português
Nederlands
Polski
Русский
中文
한국어
日本語
العربية



Type	Casque ouvert, circum-aural
Impédance	80 Ohms
Sensibilité	104 dB SPL / 1 mW @ 1 kHz
THD	<0,2% @ 1 kHz / 100 dB SPL
Réponse en fréquence	5 Hz - 50 kHz
Haut-parleur	40 mm dôme à profil "M" en Béryllium pur
Poids	490 g
Câble fourni	<ul style="list-style-type: none"> • 1 x câble 1,5 m OFC AWG 24 (1 x connecteur asymétrique Jack TRS 3,5 mm et 2 x connecteurs LEMO®) • 1 x câble 3 m OFC AWG 24 (1 connecteur symétrique XLR 4 points et 2 connecteurs LEMO®) • 1 x adaptateur Jack 3,5 mm femelle - 6,35 mm mâle
Valise de transport fournie	250 x 240 x 120 mm

Type	Circum-aural open-back headphones
Impedance	80 Ohms
Sensitivity	104dB SPL / 1mW @ 1kHz
THD	<0.2% @ 1kHz / 100dB SPL
Frequency response	5Hz - 50kHz
Loudspeaker	1.6" pure Beryllium "M" shape dome
Weight	1.08lbs
Cable provided	<ul style="list-style-type: none"> • 1 x 5ft OFC 24 AWG cable (1 x 1/4" TRS Jack connector and 2 x LEMO® connectors) • 1 x 10ft OFC 24 AWG cable (1 x 4-pin XLR connector and 2 x LEMO® connectors) • 1 x Jack adapter, 1/8" female - 1/4" male
Carrying case provided	9 ^{13/16"} x 9 ^{7/16"} x 4 ^{3/4"}

We recommend thoroughly reading all the instructions in this manual, and that you keep it somewhere safe for future reference.

IMPORTANT SAFETY PRECAUTIONS

- 1) READ these instructions.
- 2) KEEP these instructions.
- 3) RESPECT all the warnings.
- 4) FOLLOW all the instructions.
- 5) In order to avoid damaging your hearing, do not listen to headphones at high volumes for extended periods of time.

Listening to a portable stereo at high volumes can cause damage to the user's ears and may lead to hearing problems (temporary or permanent deafness, buzzing in the ears, tinnitus, hyperacusis).

It is strongly advised not to listen to a portable stereo at full volume or for more than one hour per day at an average volume.

Don't use the headphones continuously, take frequent breaks. Pay particular attention to children and teenagers who use these devices at a younger age and often at excessive volume.

6) If you begin to hear buzzing or ringing in the ears (tinnitus), experience a loss of hearing or 'muffled' hearing, stop using the headphones immediately. If the symptoms continue after a few hours, consult an ENT doctor immediately. In some cases, immediate treatment may avoid permanent hearing problems.

Exposure to excessive volumes (over 85dB) for more than one hour can cause irreparable damage to your hearing.



(CEI 60417-6044)

7) Set the volume to minimum before connecting your Focal headphones, then turn up the volume. Once the headphones are in place, gradually increase the volume to a comfortable and reasonable level. Always use the headphones with the protective ear cushions or tips.

8) NEVER drive a vehicle (car, motorbike, boat...) or ride a bike while wearing the headphones. Not only is this behaviour dangerous, it is also illegal. In some countries, a breach of the highway code for driving without due care and attention (if the driver's concentration is reduced in any way) may result in a penalty.

We advise against wearing the headphones while riding a bike, running, walking or carrying out any other activities in busy places. If you do wear the headphones in such places, set to a low volume so you can hear surrounding noises, including horns, alarms and warning signals.

Generally speaking, reducing your chances of hearing surrounding noises poses a threat to yourself and to others.

9) NEVER use the headphones as ear defenders.

10) If you feel the headphones heat up or if there is a loss of the audio signal, remove the headphones and disconnect immediately.

11) Do not install the device close to a heat source such as a radiator, cooker, heat vent or any other appliance (including amplifiers) that gives out heat.

12) Never leave your headphones exposed to humidity and never submerge them in water.

13) The headphones do not require any particular cleaning. If necessary, clean with a dry, soft duster. Do not use cleaning products containing solvents.

14) Entrust any repairs or maintenance to a qualified professional. Repair or maintenance may be required in case of any kind of damage (spillages, damaged cable, exposure to rain, if the device is dropped etc.).

15) Only connect this product to devices with a headphone output. If you are not sure about the type of device, ask your retailer.

16) Only use accessories recommended by the manufacturer.

17) Do not obstruct any openings. Never insert any objects into the openings.

18) Do not attempt to repair this device yourself. Contact a qualified professional for all maintenance work.

19) Do not use this device in tropical climates.

20) If the device has been transported from a cold environment to a warm environment, make sure no condensation has accumulated before connecting the cable.

Do not make any modifications to the system or to the accessories. Any unauthorised modifications may put you in danger, be illegal or reduce the performance of the device.

This device contains the products listed in the table, and may pose a risk of:

- suffocation (do not give the device to children less than 3 years of age);
- fire or electrocution (do not expose the device to rain or moisture, or any other liquid).

This product contains magnetic components and generates a magnetic field which may cause interference with pacemakers or implantable cardioverter-defibrillators. Consult your doctor if you have any questions about the effect these components may have on an implanted medical device.

UTOPIA

User manual

Please validate your
Focal-JMLab warranty,
it is now possible to register
your product online:
www.focal.com/warranty



Package contents

- 1 x Utopia headphones
- 1 x carrying case
- 1 x 5ft OFC 24 AWG cable (1 x 1/4" TRS Jack connector and 2 x LEMO® connectors)
- 1 x Jack adapter, 1/8" female - 1/4" male
- 1 x accessory storage box containing:
 - 1 x 10ft OFC 24 AWG cable (1 x 4-pin XLR connector and 2 x LEMO® connectors)
 - 1 x user manual
 - 1 x brand content

Connecting the headphones

Each end of the cable is labelled with either an "L" for left, or an "R" for right (**fig.2**). Make sure you connect each end of the cable to the correct headphone inputs which are also labelled "L" and "R" inside the headband (**fig.1**).

Note: cable connectors can be plugged into the headphones in one sense only (**fig.2**).

Storage

You can store your headphones in the carrying case. To disconnect the cable from the headphones, hold the ends of the cable by the "grip" (**fig.2**) to unlock the security. Then place them in their relative compartment in the carrying case (**fig.3**).

Care and maintenance

It is advisable to clean your headphones regularly to limit wear and tear. We recommend using a clean, dry, lint-free cloth for this. After a lot of use, you may notice wear marks on the ear cushions. In this case, you can replace the ear cushions if you wish. Ask your local Focal retailer for replacement parts. Carefully remove the worn cushions from your headphone earcups and clip in the new ear pads, checking that the 5 pins are in place (**fig.4**).

IMPORTANT INFORMATION

- These headphones require a running-in period in order to operate at their best.
- They will run themselves in naturally after several hours of listening time.
- If you want to speed up the process, we recommend playing very bassy music through them for at least 24 hours at a relatively high volume.
- This will stabilise the speaker drivers and allow you to get the very best out of your headphones.



Élimination correcte de ce produit.

Ce marquage indique que ce produit ne doit pas être éliminé avec les autres déchets ménagers au sein de l'UE. Par mesure de prévention pour l'environnement et pour la santé humaine, veuillez le recycler de manière responsable, pour favoriser la réutilisation des ressources matérielles. Pour retourner votre appareil usé, veuillez utiliser les systèmes de retour et de collecte ou contactez le détaillant chez lequel le produit a été acheté. Celui-ci pourra procéder au recyclage du produit en toute sécurité.



Correct elimination of this product.

This marking indicates that within the EU this product should not be disposed of with other household wastes. To prevent any risk to the environment or human health, please recycle them responsibly to encourage the reuse of material resources. To return your used device, please use the return and collection systems available, or contact the retailer where you purchased the product. They can recycle this product safely.



Ordnungsgemäße Entsorgung des Produkts.

Diese Kennzeichnung weist darauf hin, dass dieses Produkt innerhalb der EU nicht mit anderen Haushaltsabfällen entsorgt werden darf. Als Präventivmaßnahme für die Umwelt und die menschliche Gesundheit muss auf eine verantwortungsbewusste Wiederverwertung zur Förderung der Wiederverwendung von materiellen Ressourcen geachtet werden. Für die Rückgabe von Gebrauchtgernäten verwenden Sie bitte zur Verfügung stehende Rückgabe- und Recyclingsysteme oder wenden Sie sich an den Händler, bei dem Sie das Produkt erworben haben. Letzterer kann das Gerät sicher dem Wertstoffkreislauf zuführen.



Eliminación correcta de este producto.

Este símbolo indica que este producto no debe eliminarse con el resto de residuos domésticos dentro de la UE. Con el objetivo de proteger el medioambiente y la salud pública, recicle de forma responsable para favorecer la reutilización de los recursos materiales. Para devolver su aparato usado, utilice los sistemas de devolución y recogida o póngase en contacto con el vendedor del producto. Este podrá proceder al reciclaje del producto de forma totalmente segura.



Corretto smaltimento di questo prodotto.

Questa marcatura indica che, nell'UE, questo prodotto non deve essere smaltito insieme agli altri rifiuti domestici. A titolo preventivo per l'ambiente e la salute, deve essere riciclato in modo responsabile per favorire il riutilizzo delle risorse materiali. Per mandare indietro l'apparecchio usato, si prega di utilizzare il sistema di reso e raccolta o di contattare il rivenditore da cui è stato acquistato il prodotto, il quale potrà procedere a riciclare il prodotto in totale sicurezza.



Eliminação correta deste produto.

Esta marca indica que, na UE, este produto não deve ser eliminado com outro lixo doméstico. Como medida de prevenção para o ambiente e para a saúde humana, deve ser reciclado de modo responsável, para promover a reutilização dos recursos materiais. Para devolver o seu dispositivo usado, recorra aos sistemas de devolução e recolha ou contacte o comerciante em que o produto foi adquirido. Este poderá proceder à reciclagem do produto com toda a segurança.



Prawidłowe usuwanie produktu.

To oznaczenie informuje, że produktu nie należy usuwać wraz z innymi odpadami z gospodarstwa domowego na terenie UE. W celu ochrony środowiska i zdrowia człowieka, należy w sposób odpowiedzialny prowadzić recykling i wspierać ponowne wykorzystywanie materiałów. Aby zwrócić swoje urządzenie, należy skorzystać z systemu zwrotu i odbioru prowadzonego przez sprzedawcę detalicznego, u którego produkt został nabyty. Sprzedawca będzie w stanie w sposób bezpieczny przeprowadzić recykling produktu.



Tuotteen asianmukainen hävittäminen.

Tämä merkintä osoittaa, että EU:ssa tätä tuotetta ei saa hävittää muiden kotitalousjätteiden mukana. Kierrätä se vastuullisesti ehkäistääksesi mahdollisia vaaroja ympäristölle tai ihmisten terveydelle ja edistääksesi aineellisten voimavarojen uudelleenkäyttöä. Palauta käytetty laite käyttämällä saatavilla olevia palautus- ja keräysjärjestelmiä tai ota yhteys jälleenmyyjään, jolta ostit tuotteen. He voivat kierrättää tämän tuotteen turvallisesti.



Правильная утилизация продукта.

Данная маркировка указывает на то, что в пределах ЕС этот продукт не может утилизироваться вместе с бытовым мусором. В целях предотвращения загрязнения окружающей среды и нанесения ущерба здоровью человека утилизируйте продукт должным образом, позволяющим произвести его повторную переработку. Для того чтобы вернуть бывшее в употреблении устройство, используйте системы возврата и сбора сырья либо обратитесь в пункт розничной торговли, в котором вы приобрели продукт, для организации повторной переработки с соблюдением всех норм безопасности.



Correcte verwijdering van dit product.

Deze marking geeft aan dat dit product in de EU niet samen met ander huishoudelijk afval mag worden weggegooid. Om het milieu en de gezondheid van de mens te beschermen, dient u het product op verantwoorde wijze te recyclen om hergebruik van materiële hulpbronnen te stimuleren. U kunt uw gebruikte apparaat retourneren bij een recyclepunt of milieustation, of neem contact op met de winkel waar u het product hebt gekocht. Zo kan het product op verantwoorde wijze worden gerecycled.

Focal-JMlab® - BP 374 - 108, rue de l'Avenir -
42353 La Talaudière cedex - France - www.focal.com
Tel. (+33) 04 77 43 57 00 - Fax (+33) 04 77 43 57 04 -
SCCG - 18/08/2021 - v1 - CODO1717



UTOPIA

Product data sheet

HANDCRAFTED
IN FRANCE

Utopia are the ultimate Focal headphones. They are the brand's flagship product, combining the best of our technologies with assertive design, to enhance your listening experience.

Their full-range, Beryllium, 'M'-shaped speaker drivers are fully open-backed and run with no passive or active correction, from 5 Hz to over 50 kHz! The listening experience they deliver is strikingly real, precise and dynamic, with a soundstage that is both wide and deep: close your eyes and feel the musicians beside you. Combining comfort and aesthetics, Utopia delivers uncompromising design and conception. The forged, recycled carbon yokes are modern and sophisticated in style, whilst providing more lightness. The honeycomb grille and Black Chrome ring showcase subtle design details, like the Yin & Yang on the outer case, the black and red double grille on the speaker driver, and more.

So many elements that fiercely embody Utopia: the perfect balance between technology and design!



Key points

- High-end, open-back, high-fidelity headphones ; for home use
- Full-range speaker driver with 'M'-shaped, pure Beryllium dome: pure, dynamic and perfectly balanced sound
- Made in France in the Focal workshops
- Design that adapts to all head morphologies: optimum comfort
- Premium materials and sophisticated finishes: genuine leather, forged, recycled carbon, aluminium, etc.

Type	Circum-aural, open-back headphones
Impedance	80 Ohms
Sensitivity	104dB SPL / 1mW @ 1kHz
THD	<0.2 % @ 1kHz / 100dB SPL
Frequency response	5Hz - 50kHz
Speaker driver	1" (40mm) pure beryllium 'M'-shaped dome
Weight	1.08lbs (490g)
Cable provided	<ul style="list-style-type: none"> • 1 x 5ft cable (1.5m) with 1 x 1/8" (3.5mm) asymmetric TRS Jack connector and 2 x Lemo® connectors • 1 x 10ft cable (3m) with 1 x symmetrical 4-point XLR connector and 2 Lemo® connectors • 1 x Jack adapter, 1/8" (3.5mm) point socket - 1/4" (6.35mm) point plug
Carrying case included	9.8x9.4x4.7" (25x24x12cm)




HOME COLLECTION

2022



HANDCRAFTED IN FRANCE
HEADPHONES





For more than four decades, Focal has created speaker drivers and high-end loudspeakers that deliver a unique sound. Our brand values are innovation and performance; excellence and pleasure. We are globally renowned for our exclusive technologies. The result of this technological heritage is class-leading products offering a natural, authentic performance, imbued with clarity and power. Our handcrafted headphone collection combines this outstanding listening experience with exquisite, high-quality design, for an all-round luxury sensation.



OPEN-BACK HEADPHONES

Ultimate listening experiences at home

Utopia and Clear Mg are high-fidelity headphones with an open-back design, offering exceptional audio reproduction thanks to their latest generation speaker drivers with no restriction: completely free, the sound is pure and sensational. Their carefully selected finishes, meticulous detailing and fine materials augment the elegance of Utopia and Clear Mg, enhancing your listening pleasure.



CLOSED-BACK HEADPHONES

Sound immersion

Focal's engineers have used cutting-edge techniques to bring the best aspects of open-back headphone performance to closed-back design. Stellia and Celestee incorporate speaker drivers capable of working within a limited space, while offering perfect soundproofing and exceptional listening quality. These headphones perfectly illustrate the brand's refusal to compromise, finished with a touch of French sophistication.



ANC HEADPHONES FOR TRAVEL

Travel with Hi-Fi

The Bathys wireless headphones bring you Focal pure sound while you're on the move. Its speaker drivers are made in France, delivering a pure hi-fi sound while its Bluetooth® and Active Noise Cancellation technologies allow you to listen to music without being disturbed by noises around you. This result is achieved thanks to a microphone system which captures ambient sounds and analyses them to produce a reverse frequency, reducing unwanted background noise. This technology is ideal for enjoying your favourite music, a podcast or a film, or answering calls. Take your emotions along for the ride, with Focal headphones for travel.



PASSIVE HEADPHONES

Passive headphones require external amplification and digital/analog converter (DAC), connected to the headphones by a cable (a Jack, for example). The DAC converts the digital signal from the source (streaming or other) into an analog signal. This is then processed by the amplifier, which increases the amplitude of the signal and provides the necessary power for the speaker drivers to faithfully reproduce the sound.

While smartphones/computers have an amplifier built-in, we advise the use of a dedicated headphone amplifier, as Naim Uniti Atom Headphone Edition, to allow the headphones to deliver their full performance.

ACTIVE HEADPHONES

Active headphones incorporate an amplifier and digital/analog converter (DAC) which directly process the sound signal mitted from their wireless audio source (smartphone, tablet, etc.) and amplify it to deliver high-quality sound reproduction. The headphones operate on an internal battery, so all you need to do is ensure that it's charged. "All-in-one", the Bathys active headphones offer freedom of movement and Hi-Fi sound.





01.
UTOPIA

11



02.
STELLIA

17



03.
CLEAR MG

23



04.
CELESTEE

29



05.
RADIANCE

35



06.
UNITI

41



07.
BATHYS

47

01. UTOPIA

Pure sound at its finest

Utopia are Focal's flagship headphones. Thanks to their innovative speaker drivers, the listening experience is stunningly realistic. The leather used on the earcups, as well as the woven carbon fibre of the headband, lend an elegant touch to the high-performing, highly comfortable Utopia. The honeycomb grilles and the Black Chrome colour ring highlight subtle details of the design, such as the 'Yin and Yang' on the exterior of the earcup, which represents the perfect harmony between high technology and design.

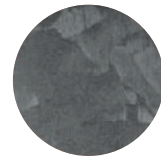




Real leather



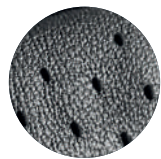
Black Chrome finish



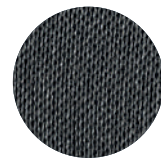
Forged, recycled carbon



Unrivalled open design



Leather earpads



Woven carrying case





UTOPIA

Over-ear open-back headphones

Impedance	80Ω
Sensitivity	104dB SPL / 1mW @ 1kHz
Frequency response	5Hz – 50kHz
THD	<0.2% @ 1kHz / 100dB SPL
Speaker driver	1.6" (40mm) pure Beryllium 'M'-shaped dome
Weight	1.08lb (490g)
Cables and connectors	<ul style="list-style-type: none">• 1 x 5ft (1.5m) cable with 1/8" (3.5mm) unbalanced Jack connector & Lemo® connectors• 1 x 9.8ft (3m) balanced 4-pin XLR cable & Lemo® connectors• 1 x Jack adapter 1/8" (3.5mm) female – 1/4" (6.35mm) male
Carrying case	9.8x9.4x4.7" (25x24x12cm)



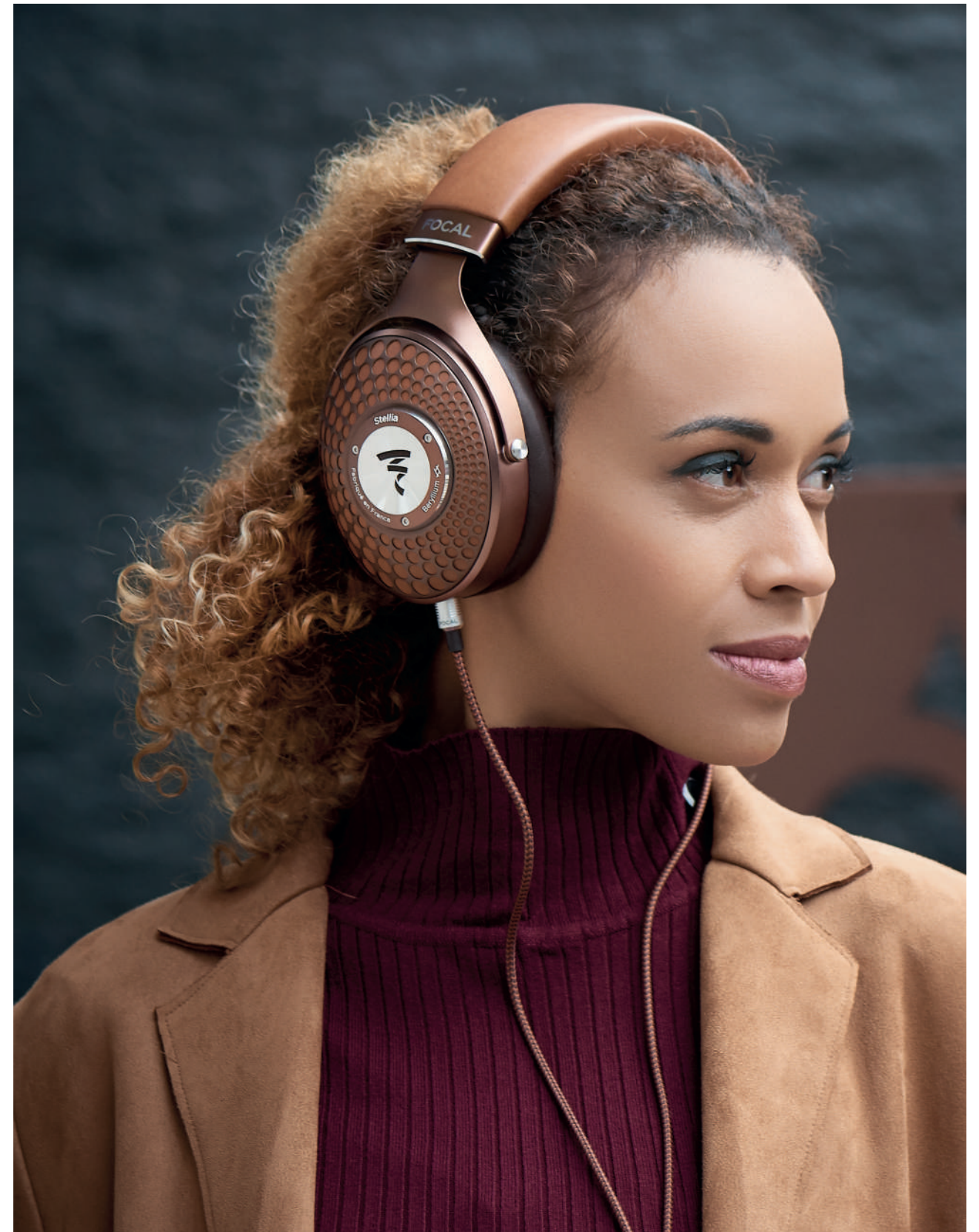
HANDCRAFTED
IN FRANCE



02. STELLIA

Pure sound everywhere

Each Stellia component is developed in the pursuit of excellence and refinement, down to the full-grain leather of the headband, the beautifully styled earcups and the ultra-comfortable earpads. The full-range driver, with its 'M'-shaped pure Beryllium dome, combines an array of Focal innovations – together they deliver an incredible listening experience. Stellia pushes the acoustic boundaries of the very best closed-back headphones and stands out as the reference model in its class.





Full-grain
leather



Cognac
finish



Solid
Aluminium



Focal
signature



Mocha
finish



Woven
carrying case





STELLIA

Over-ear closed-back headphones

Impedance	35Ω
Sensitivity	106dB SPL / 1mW @ 1kHz
Frequency response	5Hz - 40kHz
THD	0.1% @ 1kHz / 100dB SPL
Speaker driver	1.6" (40mm) pure Beryllium 'M'-shaped dome
Weight	0.96lb (435g)
Cables and connectors	<ul style="list-style-type: none">• 1 x 4ft (1.2m) cable with 1/8" (3.5mm) unbalanced Jack connector• 1 x 9.8ft (3m) balanced 4-pin XLR cable• 1 x Jack adapter 1/8" (3.5mm) female - 1/4" (6.35mm) male
Carrying case	9.8x9.4x4.7" (25x24x12cm)



HANDCRAFTED
IN FRANCE



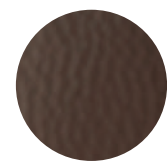
03.

CLEAR MG

Experience excellence

Thanks to their Magnesium drivers, fully open at the back, Clear Mg headphones reveal the smallest details of your music with precision and finesse. You'll even forget you're wearing them... The solid aluminium yoke offers pure, seamless design. The exterior of the earcups features a honeycomb pattern for yet more sophisticated elegance, enhanced further by the Chestnut and Mixed-Metals finish, as well as the genuine leather and microfibre earpads.

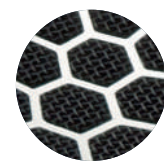




Semi-aniline
leather



Chestnut & Mixed-Metals
finish



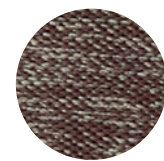
Honeycomb
grille



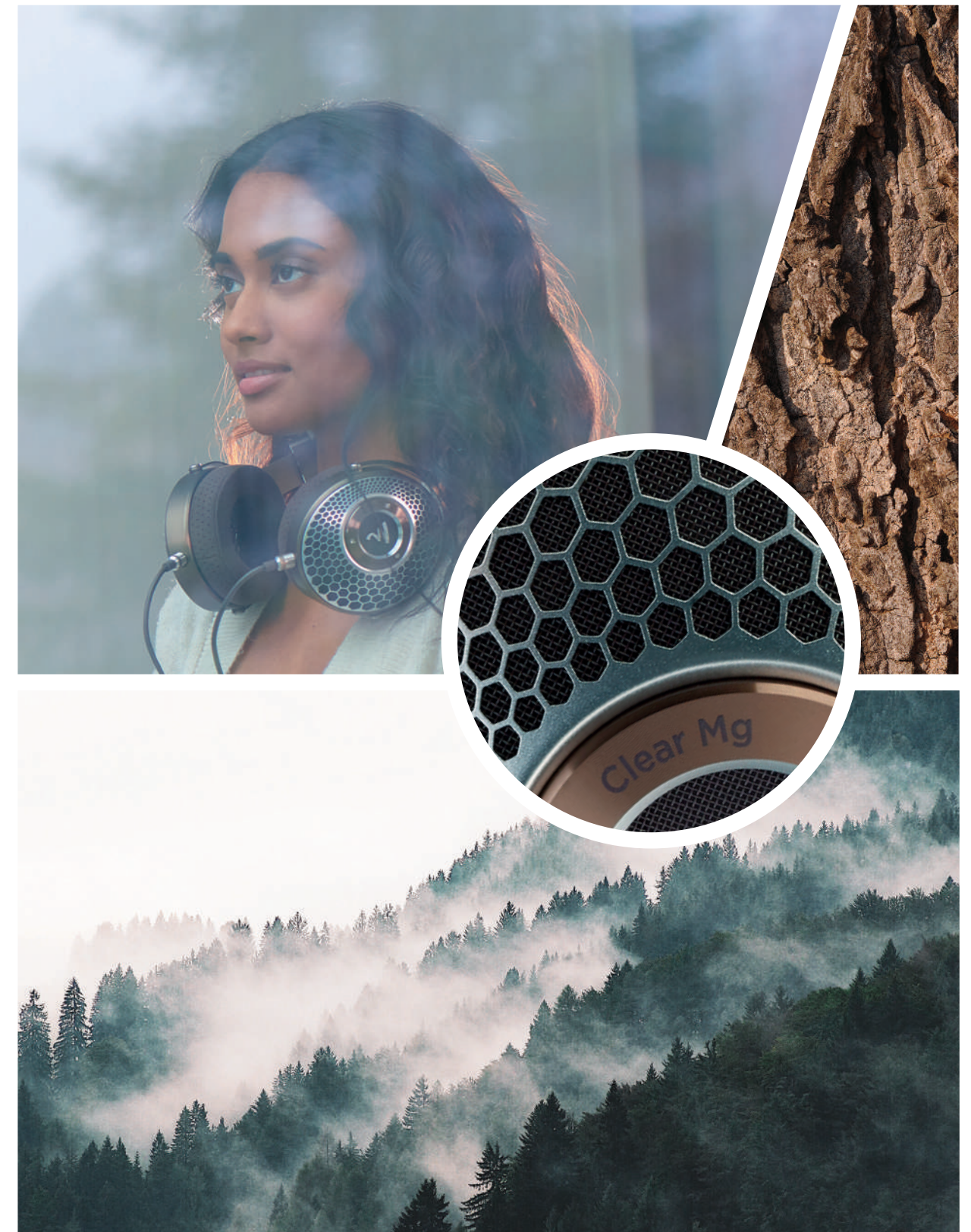
Focal
signature



Perforated
microfibre



Woven
carrying case





CLEAR MG

Over-ear open-back headphones

Impedance	55Ω
Sensitivity	104dB SPL / 1mW @ 1kHz
Frequency response	5Hz - 28kHz
THD	0.25% @ 1kHz / 100dB SPL
Speaker driver	1.6" (40mm) 'M'-shaped Magnesium dome
Weight	0.99lbs (450g)
Cables and connectors	<ul style="list-style-type: none">• 1 x 3.9ft (1.2m) cable with 1/8" (3.5mm) unbalanced Jack connector• 1 x 9.8ft (3m) balanced 4-pin XLR cable• 1 x Jack adapter 1/8" (3.5mm) female - 1/4" (6.35mm) male
Carrying case	9.8x9.4x4.7" (25x24x12cm)



HANDCRAFTED
IN FRANCE



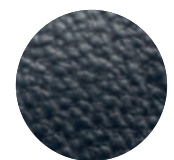
04.

CELESTEE

Reveal the intensity of every moment

Enjoy a listening experience without a noisy environment disturbing your pleasure or worrying about annoying the person next to you: this is the promise made and kept by Celestee. Thanks to its drivers, Celestee delivers audio quality without compromise, with outstanding soundproofing and comfort. Precision and balance define the sound reproduction, while elegance embodies the design. Lastly, the Navy Blue finish and carefully selected materials further refine these headphones.





Semi-aniline
leather



Soft Copper
finish



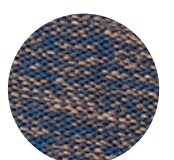
Solid
Aluminium



Stainless
steel grille



Navy Blue
finish



Woven
carrying case





CELESTEE

Over-ear closed-back headphones

Impedance	35Ω
Sensitivity	105dB SPL / 1mW @ 1kHz
Frequency response	5Hz - 23kHz
THD	0.1% @ 1kHz / 100dB SPL
Speaker driver	1.6" (40mm) Aluminium/Magnesium 'M'-shaped dome
Weight	0.95lb (430g)
Cables and connectors	<ul style="list-style-type: none">• 1 x 4ft (1.2m) cable with 1/8" (3.5mm) unbalanced Jack connector• 1 x Jack adapter 1/8" (3.5mm) female - 1/4" (6.35mm) male
Carrying case	9.8x9.4x4.7" (25x24x12cm)



HANDCRAFTED
IN FRANCE

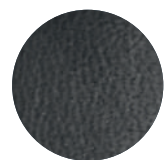


05. RADIANCE

Bentley Special Edition

Focal for Bentley Radiance closed-back headphones are a special edition created in honour of the partnership between Focal, Naim Audio and prestigious car manufacturer, Bentley Motors. Engineers and designers have worked together to develop these high-end and elegant headphones. Authentic, refined Bentley touches are added with Copper finishes and Diamond motifs: every detail has been considered, making Radiance a collector's item.

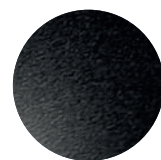




Full-grain
leather



Bentley
special edition



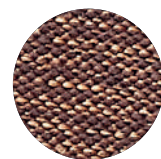
Solid
Aluminium



Diamond
motifs



Copper
finishes



Woven
carrying case





RADIANCE

Over-ear closed-back headphones

Impedance	35Ω
Sensitivity	105dB SPL / 1mW @ 1kHz
Frequency response	5Hz - 23kHz
THD	0.1% @ 1kHz / 100dB SPL
Speaker driver	1.6" (40mm) Aluminium/Magnesium 'M'-shaped dome
Weight	0.96lb (435g)
Cables and connectors	<ul style="list-style-type: none">• 1 x 4ft (1.2m) cable with 1/8" (3.5mm) unbalanced Jack connector• 1 x Jack adapter 1/8" (3.5mm) female - 1/4" (6.35mm) male
Carrying case	9.8x9.4x4.7" (25x24x12cm)



HANDCRAFTED
IN FRANCE



06.

UNITI ATOM

Headphone Edition

Built-to-last in Britain in the Naim workshops, Uniti Atom Headphone Edition is designed to be the ultimate solo listening source at home. This innovative all-in-one system combines beautiful design with stunning functionalities and all the streaming features you need (Qobuz, TIDAL, Spotify®). Simply connect it to your wi-fi, plug in your favourite headphones and escape into a world of superior-quality music streaming, radio, podcasts and more.





Sleek volume wheel



High performance transformer



32bits/384kHz resolution



Multiple streaming services



All-in-one system



Digital and analogue inputs





UNITI ATOM

Headphone Edition

Type	Streaming headphone amplifier	
Audio inputs	Digital	2 x Optical S/PDIF up to 96kHz, Coaxial RCA (up to 24bit/192kHz, DoP 64Fs)
	Analogue	1 x Stereo RCA pair
	USB	2 x USB 2.0 (Type A connector)
	Streaming	Apple AirPlay 2, Chromecast Built-in, UPnP™, Spotify® Connect, TIDAL, Roon Ready, Bluetooth®, Internet Radio, Qobuz
Headphone outputs	4.4mm Pentaconn (balanced) 4 pin XLR (balanced) 6.35mm (¼ inch) jack (unbalanced) 1.5W RMS per channel into 16ohms Suitable for headphones from 16Ω and upwards	
Audio outputs	Balanced XLR Preamp output RCA Preamp output Multiroom: Sync up to five Naim Streaming products and control via the Naim App	
Power	17W (typical use)	
Dimensions (HxWxD)	3.74x9.65x10.43" (9.5x24.5x26.5cm)	
Weight	15.4lbs (7kg)	



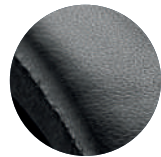
07.

BATHYS

Travel with High-Fidelity

Bathys, the wireless headphones with Active Noise Cancellation are the perfect travel companion. In addition to offering perfect soundproofing from your surroundings, they deliver a pure hi-fi sound thanks to Focal's, made in France, speaker drivers and to the integrated USB-DAC mode offering a resolution of up to 24 bits/192kHz. Comfortable and refined, Bathys features numerous functionalities as well as easy-to-access control buttons for a very simple Bluetooth® use.





Real
leather



Metallic
finish



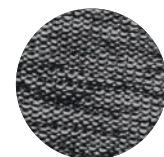
Light Magnesium
yoke



Backlighting
logo



Solid
Aluminium



Woven
carrying case





BATHYS

Closed-back wireless headphones
with active noise cancelling

Bluetooth®	5.1 Multipoint ; range > 15m
Audio codecs	SBC, AAC, aptX™ Adaptive, aptX™
Autonomy	30h Bluetooth® Noise Cancelling 35h Jack mode 42h USB DAC mode
Voice assistants	Google Assistant, Amazon Alexa
Microphones	8
Control application	Focal & Naim, iOS and Android compatible
Frequency response	15Hz - 22kHz
THD	<0.2 % @ 1kHz / 100dB SPL
Connections	Bluetooth® / Jack 3.5mm / USB-C®
Speaker driver	1.6" (40mm) Aluminium/Magnesium 'M'-shaped dome, Made in France
Weight	0.77lb (350g)
Cables and connectors	<ul style="list-style-type: none">• 1 x 4ft (1.2m) cable with 1/8" (3.5 mm) Jack connector• 1 x 4ft (1.2m) USB-C® cable
Carrying case	9.5x8.3x2.8" (24x21x7cm)



ACCESSORY

Headphones stand

Specifically designed for Focal headphones, this stainless steel stand is also available as part of our collection. Its stylish shape, reminiscent of the Focal flame logo, provides a simple, aesthetic storage solution for your headphones, while the sleek design is finished with laser engraving. Thanks to its Setapan® base, it ensures perfect stability.





UTOPIA



'The Focal Utopia turn listening to music into a full-on experience'

GQ



'I consider this headphone a masterpiece'

HIFI +

'With Focal, engineering and craftsmanship always serves the art. Beautiful to behold, yes. But remarkable to listen to'

TONE



CLEAR MG



'Everything about the Focal Clear Mg is close to perfect'

FORBES



'Clear Mg is masterful. Focal's promise of excellence is warranted'

HI-FI TRENDS



STELLIA



'They are a slam dunk.'

THE ABSOLUTE SOUND



'Simply the best closed-back headphones we've heard'

WHAT HI-FI



CELESTEE



'It really was love at first sight - and at first listen'

MOON AUDIO

'Easily the most subtly stunning-looking Focal headphone'

AUDIOHOLICS



'These closed-back headphones ooze sophistication and have sound quality to match with electrifying detail and timing'

BBC MUSIC



RADIANCE



'Focal has made a pair of headphones that sound as good as they look'

FORBES

'The French manufacturer Focal is no stranger to producing high-quality headphones, but I think the Radiance deserves its unique spot in their catalog'

MAJOR HIFI



'Focal has managed to create what I honestly believe is the price-to-performance champion in the high-end closed-back headphone category'

HEADFONIA



UNITI



'Naim's new Uniti Atom Headphone Edition is just perfect for private listening'

FORBES



'Luxury-tier quality in hardware, design and sound, built to keep pace with the best headphones made today'

AUDIOHOLICS

'You really get the Naim sound, now delivered straight to your ears'

HI-FI.NL

COLLECTIONS

Combining performance and design, Focal's collections are a revelation, awakening the emotions. And it doesn't matter where you are. At home with hi-fi and in-wall/in-ceiling loudspeakers, Home Cinema systems and open-/closed-back headphones; on the go with in-car kits; during travel with Bluetooth® Noise Cancelling Headphones; in the studio with monitors and at sea with specialist yacht solutions.



Home Collection



Motorities Collection



Professional Collection

FOCAL *Powered by* naim

Enjoy an incredible sound experience

Find our products in 10,000 retail partner stores across the world, but also in our Focal Powered by Naim shops. These stores, dedicated to our brands, invite you to dive into our world, our savoir-faire and immerse yourself in the Focal & Naim sound.

ASIA

Bengaluru - Guangzhou
Seoul Gangnam-gu
Seoul Hanam
Taipei

AUSTRALIA

Adelaide - Melbourne
Perth - Sydney

EUROPE

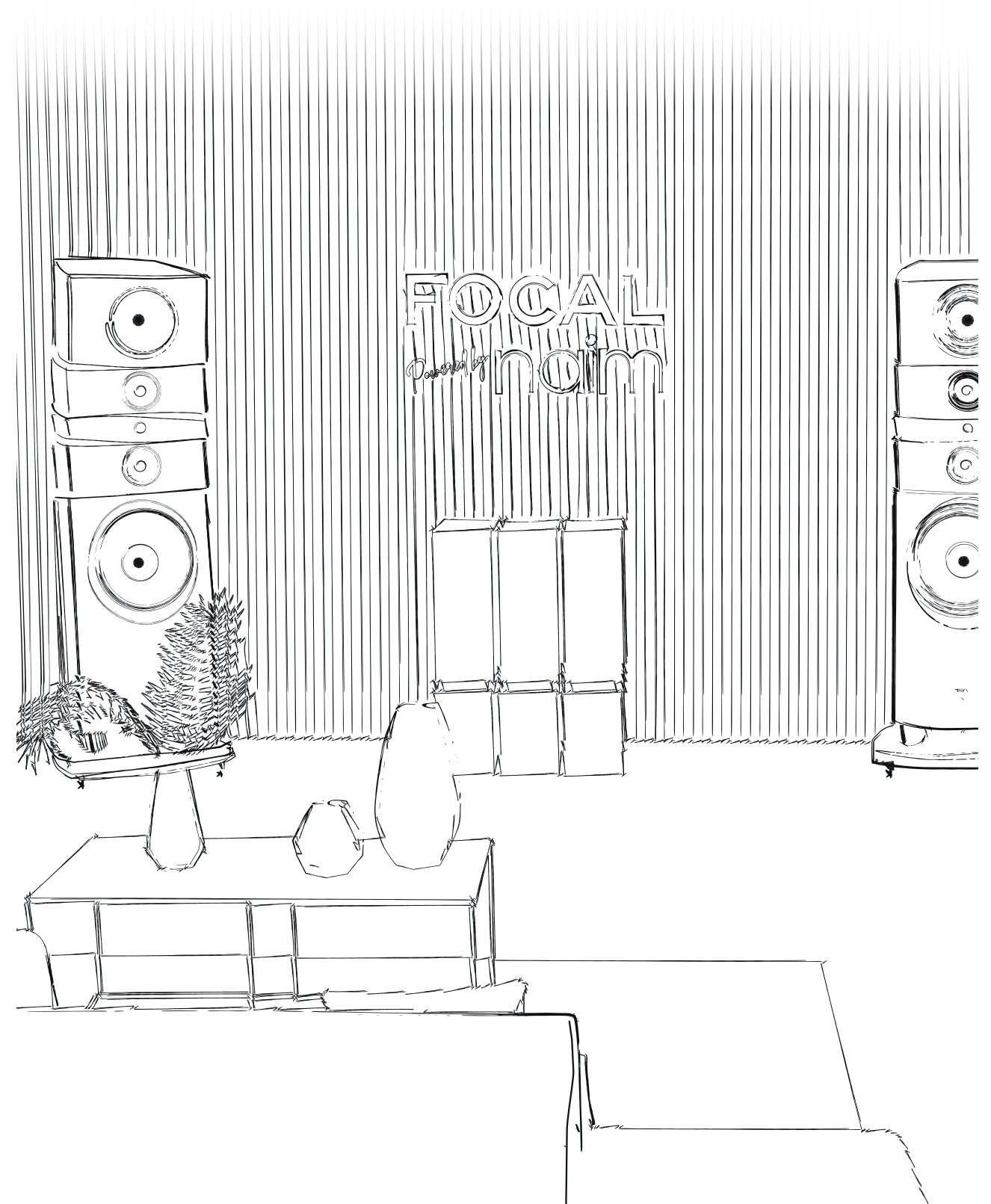
Cannes - Lyon
Perpignan
Berlin - Bad Schwartau
Sevenoaks
Prague
Bucarest
Vilnius

CANADA

Barrie - Lethbridge
Saskatoon
Winnipeg

USA

Austin
Houston
Miami





For more information, scan the QR code
or find us at:

www.focal.com



Focal JMLab®

BP 374 - 108, rue de l'Avenir - 42353 La Talaudière cedex - France - +33 (0) 477 435 700

Focal® is a registered trademark of Focal JMLab®, Naim® is a registered trademark of Naim Audio®.

Due to constant technological advances, Focal JMLab® and Naim Audio® reserve the right to modify prices and specifications without notice.

Non-binding pictures. Pictures : L'Atelier Sylvain Madelon / p.47-49: Die Frau / Envato Elements. SCCG/17/08/2022 - v3

