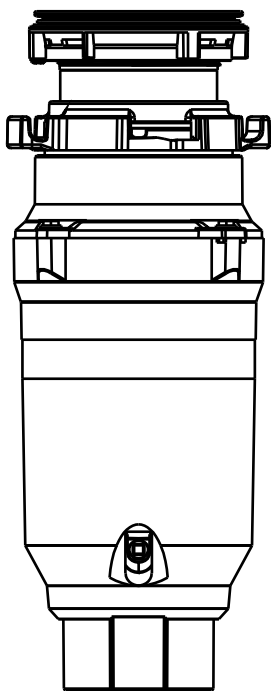


FOOD GARBAGE DISPOSAL



S55

Installation and Operation Instructions

Treatable garbage



Vegetable



Leftovers



Napkin



Small shellfis



Fish bone



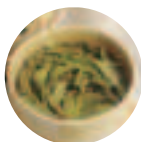
Chicken&duck
bones



Cut
spare-rib



Eggshell



Tea residue

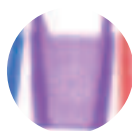


Fruit peel

Non treatable garbage



Pig&cow
bones



Plastic



Metal



Rubber

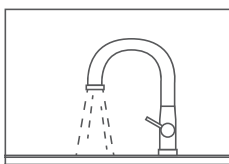


Glass

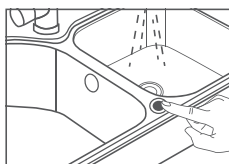


Fiber fabric

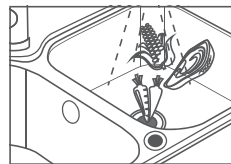
Process flow



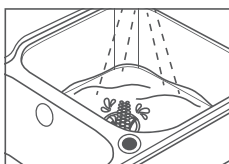
1. Turn on the tap.



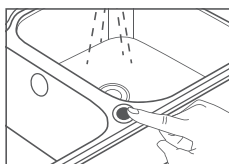
2. Start food garbage disposer.



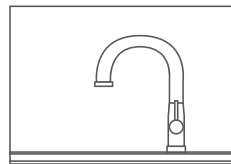
3. Using multi-functional basin
plug to lead food waste into
food garbage disposer.



4. Run the food waste disposer
until you hear the motor and
water flow.



5. Shut down the machine
after grinding.



6. After the machine is shut
down, keep the faucet running
for 5S, and then close the
faucet. The processing flow is
completed.

Important information

I. Notice on environmental impact

※All packaging materials are environmentally friendly and recyclable. Please dispose them properly in an environmentally friendly way.

※Don't let children play with plastic film and packing box, to prevent room breathing accident.

II. Treatment of used garbage disposer

※ Discard the garbage disposer when it can no longer be used. Please process it until it cannot be used again before discarding it.

※The old garbage disposer contains useful materials that can be reused. Please help to properly dispose or recycle them so as to contribute to environmental protection.

III. Before using the new garbage disposer

※The garbage disposer unit is specially designed for home use, so it can only be used in home kitchen.

※Do not use the garbage disposer if it is found that there is obvious damage. Please take the initiative to contact MIUI online customer service.

IV. Packing list

※Please open the box one by one and check whether the following products and accessories are complete, if they are missing or damaged:

※If you have any questions, please contact the buyer and it will be served as soon as possible

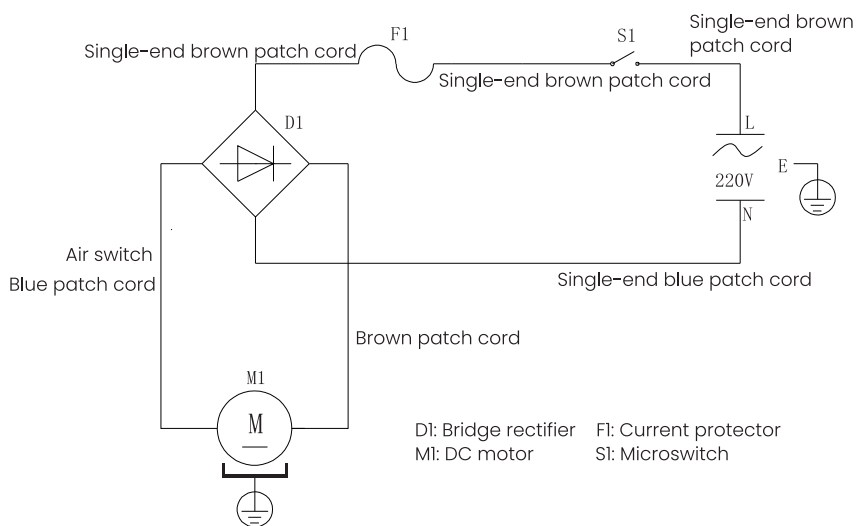
Packing list:

Serial No.	Name	Amount
1	Machine body	1
2	External tee elbow	1
3	Single teeth hose	1
4	Double teeth hose	1
5	Air switch button	1
6	Air pipe	1
7	Multifunctional basin plugging	1
8	Bolt	2
9	Rubber washer	3
10	Splash shield	1
11	Instruction manual	1

Tip: The accessories for different models may vary according to the physical packing list.

Product introduction

I. Electrical schematic diagram




II. Structure diagram of food waste disposer



*Indicates that there are differences between different models of machines!

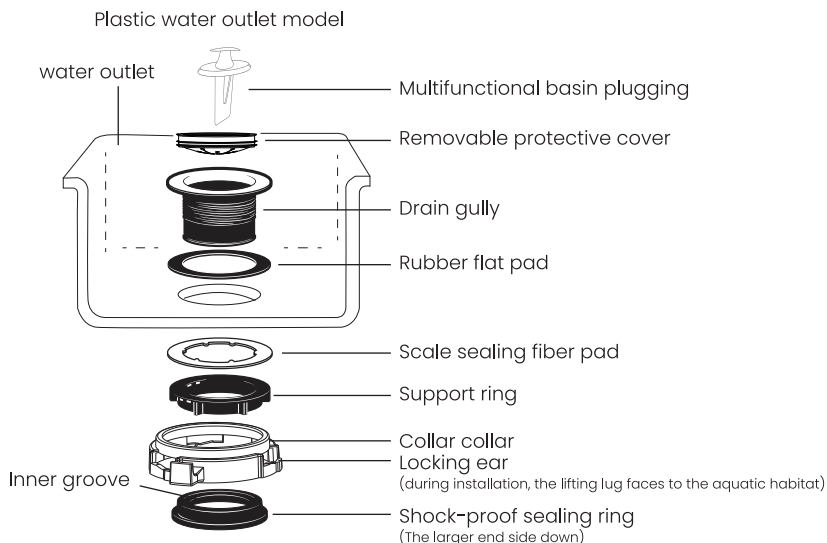
Installation instructions

 A Note: now is a good time to clean up the sewage pipeline. It's better to use the pipe desilting tool to clean first, and then install the new disposer.

I. Installation components

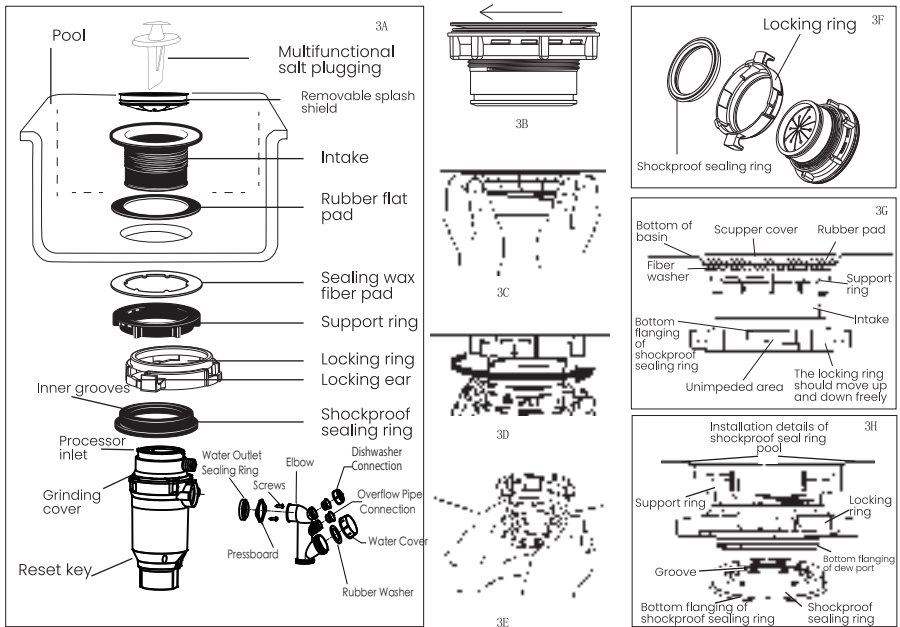
1. Please read through before operation

Tips: Pay attention to the installation sequence of components. The machine has been assembled before leaving the factory (see the figure below). Please put the disposer into the cabinet under the sink for practice before installation, so as to understand how all components are assembled.



2. Installation system of plastic outlet type

- ※ Lift the locking ring to the top of the water outlet, remove the shockproof sealing ring, and then take out the locking ring.(Figure 3E)
- ※ Turn left (clockwise) to remove the support ring, remove it, and then remove the fiber pad (Figure 3B).In this way, the water outlet and rubber flat pad are left on the installation components.
- ※ Before field installation, you can try to install the shockproof seal ring, please refer to the instructions in detail figure 3H.
- ※ Before putting the water outlet into the sink, please clean the water outlet with toilet paper or technical rag, and then insert the water outlet with rubber flat pad into the water outlet, and adjust it smoothly.
- ※ Put wax fiber pad and support ring under the sink, lock the support ring to the right and tighten it (Figure 3C) until the water outlet cannot move.At this time, you can plug the basin plug, and fill the sink with water (full of the whole water leak), check the sealing condition of the sink.
- ※ When installing the sealing ring, it is necessary to push up the locking ring, and cover the inner groove of the shockproof sealing ring (the larger end side down) on the convex edge at the bottom of the water outlet, similar to covering the cover on a plastic container (see Figure 3A, 3E, 3G and 3H). Please read the important tips below.Please note that the position of reset key should be easy to operate.



Important tips: installation of sealing ring

When the shockproof seal ring is installed correctly, the flangings at the bottom of the water outlet lie in the groove inside the shockproof seal ring. At this time, the locking ring can be put down to cover the shockproof seal ring. The locking ring can rotate freely. The bottom of the shockproof seal ring can play a good role in sealing and shockproof between the water outlet and the disposer inlet (see Figure 3H)

3. Installation system of metal outlet type

※ Remove the concave splash shield after the lower locking ring is rotated and removed clockwise.(Figure 4B, 4C)

※ Use the standard hexagon wrench to loosen the three bolts, and then use the - shaped screwdriver to pry up the locking ring and remove the locking ring.(Figure 4D)

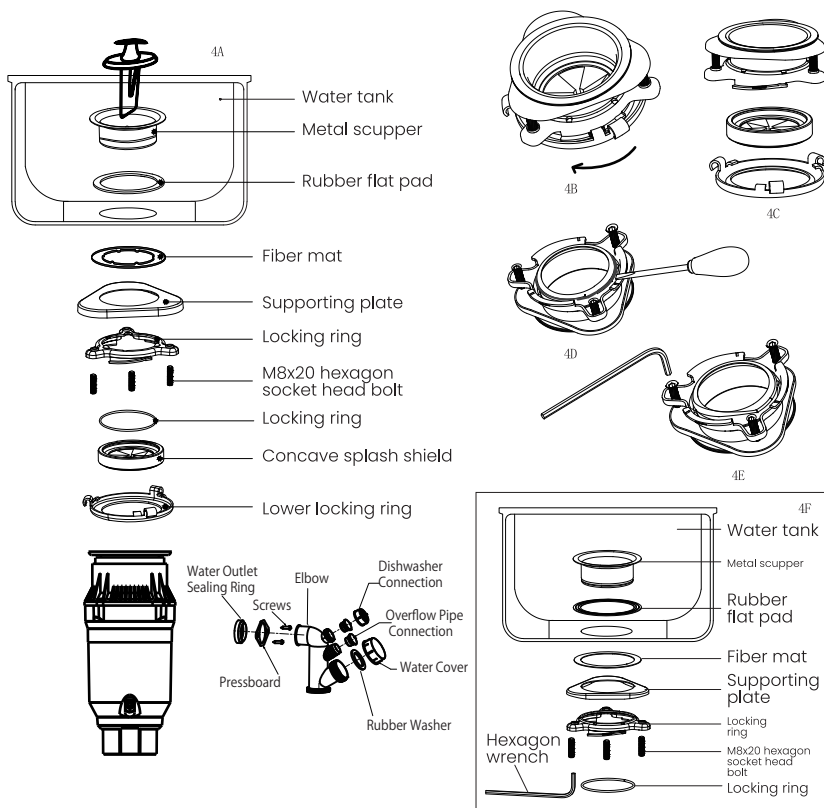
※ Screw out the three bolts with standard hexagon wrench and take down the locking ring, support plate and fiber flat pad.(Figure 4E)

※ Put the fiber flat pad under the sink opening to ensure that there is no debris in the sink opening area, and insert the rubber flat pad into the sink opening. You may want to place a heavier object in the sink to keep the water outlet in place.(place a towel under the object to prevent scratching)

※ Under the sink, place the fiber flat pad and the support plate (flat - face up) in place in turn, and slide the locking ring to the water outlet to make it against the support plate.(Figure 4A, 4F)

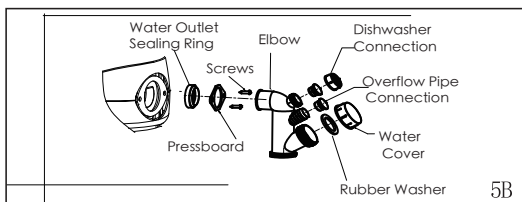
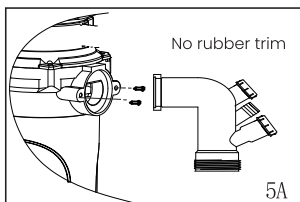
※ When the fiber flat pad, support plate and locking ring are tightly at the bottom of the sink, slide the locking ring onto the water outlet until it is buckled in the groove of the water outlet.(Figure 4A, 4F)

※ Screw up the three mounting screws on the support plate until the mounting components are firmly and stably installed on the sink.(Figure 4F)



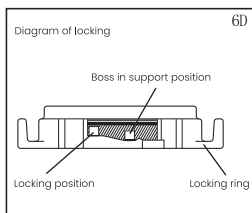
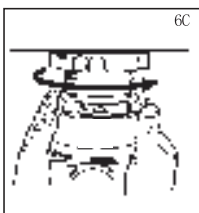
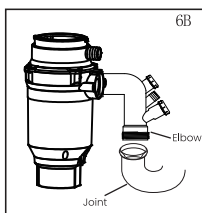
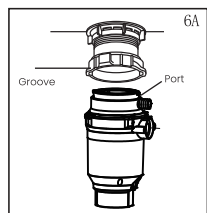
II. Connecting drainage elbow

1. Connect the drain elbow to the disposer (see Figure 5A, 5B).
2. If you need to connect the dishwasher, please read section 2B. If you do not connect the dishwasher, please make sure that all the pipe connections are sealed and comply with the water supply and drainage standards and regulations. You can test the water for leakage.



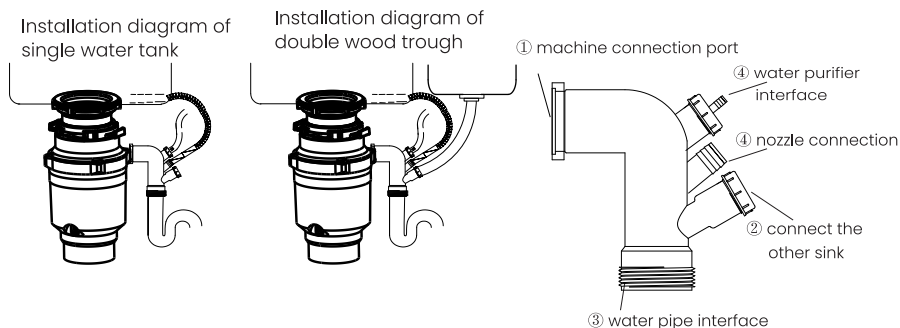
III. Installation steps for connecting the disposer to the plastic water outlet of the locking ring assembly

1. Align the disposer with the locking ring, insert the convex into the groove of the locking ring and turn the disposer 1 / 4 (about 6.4mm) to the right to temporarily connect it to the locking ring (see Figure 6A).
2. Turn the locking ring to align the elbow of the disposer drain with the inlet connector of the drain pipe (see Figure 6B).
3. Turn the locking ring to the right (counter clockwise) until it is locked tightly. The locking boss on the interface must be at the left end of the long groove of the locking ring (see Figure 6C and 6D).
4. If the locking ring is difficult to turn, you can use a screwdriver or wrench to assist.



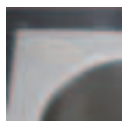
IV. Sewer connection

1. Overflow connection: ④ is the sink overflow connection. If there is no overflow, keep the rubber plug sealed. If there is overflow, remove the plug and connect the overflow pipe here.
 2. Single sink: seal ② with the water cover and gasket provided by the company, connect ③ with single tooth hose, and directly lead to the water pipe.
 3. Double sink: take off the water cover at ② and connect ② with double tooth hose, the other end with another sink, and the connection at ③ with single water is consistent with the single sink connection.
- Note: the caliber of the company's elbow and drain hose is 40mm. If the caliber is inconsistent with that of the sink, please use the adapter (purchase by yourself).



V. Switch button connection

1. The wall is not reserved with a switch, so it is necessary to install an air switch button for control.
- Note: drill a hole with a diameter of 30mm at the most convenient place on the kitchen console or at the corner of the sink. The standard button screw diameter of the company is 28mm. If there is a soap dispenser hole left in the basin and it is not used, its diameter and the diameter of the air switch are the same, so it can be used directly. If the diameter is different, it is necessary to take a hole again.



Before hole taking



Hole taking



Hole taking completed

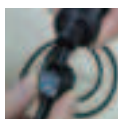


Install switch button

- ① Remove the locking ring of the air switch, leave the sealing gasket, and then connect the air pipe end to the switch button.
- ② Insert the button and the air pipe into the reserved or taken slot hole, adjust the balance of the button, put the locking ring on the air pipe through the air pipe, and tighten it until it cannot shake.
- ③ Insert the other end of the air pipe into the interface of the air switch on the rear cover of the machine.
- ④ It is necessary to ensure that both ends of the hose are connected without air leakage, and the switch button and the water basin are connected closely without water leakage.



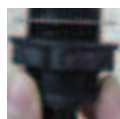
Remove the locking ring and air opening gasket



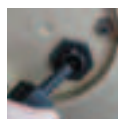
Connect air line to switch button



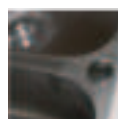
Insert button and air pipe into sink hole



Tighten the upper air pipe of locking ring and air opening gasket until the switch cannot shake



Insert the other end of the air pipe into the interface of the air switch at the bottom of the machine and lock it with the hose locking ring



Completed

2. The condition that the switch control socket has been reserved on the wall

- ① Turn off the wall control switch.
- ② Connect the air switch assembly to the machine.
- ③ Turn on the wall control switch, start the machine through the air switch button, then pull out the air switch assembly, and control the machine through the wall switch.



Turn off the wall control switch



Connect the air switch assembly to the machine



Turn on the wall control switch



Press the air switch button to start the machine



Unplug the air switch assembly

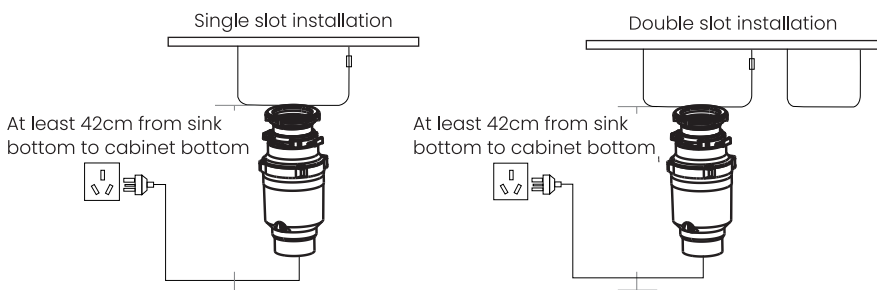
Warning:

1. Incorrect ground connection may cause electric shock. If you are not sure whether the system is properly grounded, please contact the professional electrician or service personnel to verify. If the plug does not match the socket, please do not modify the original plug provided by us without authorization. Please contact MIUI online customer service or find help from professional electricians.

2. Grounding guide is applicable to garbage disposer equipped with grounding power line.

3. This product must be grounded to avoid electric shock to the user in case of machine failure. Our wires are equipped with grounding conductor and grounding plug. It must be plugged into the socket properly grounded according to local electricity standards and regulations. If the provided wire is damaged, if the provided wire is damaged, please contact MIUI customer service or a similar professional as soon as possible.

Typical installation



Guide for use

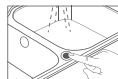
I. Instructions

※ Use process of air switch

1. Turn on the tap.
2. Press the air switch to start the food garbage disposer.
3. Use multi-functional basin plug to lead food garbage into food garbage disposer, please do not put in long fiber materials such as bone, plastic, iron, glass and feathers.
4. Run the food waste disposer until the sound of the motor and water flow is heard.
5. Keep the water flowing in during the grinding process, and turn off the faucet after grinding.
6. After the machine is shut down, keep the faucet running for 5 seconds, then close the faucet, and the processing flow is completed.

※ Tips for proper use

1. Before using the dishwasher, make sure that the disposer is empty to ensure normal drainage.
2. When you do not use the disposer, please plug the basin plug to prevent foreign matters from falling.
3. Your disposer is durable and can handle normal food residues without maintenance for many years.
4. After grinding, allow water to flow for 15 seconds before shutting it down, which can ensure all food waste debris is discharged into the sewage pipe.
5. Cold water is recommended. Cold water keeps food waste and oil solid so it can be ground and drained away and will not attach to the drain wall.



Operation and Maintenance Instructions of Garbage Disposer

Instructions for Use

II. Precautions for use

1. Please read all instructions carefully before using this product.
2. Please turn on the faucet before use, then turn on the garbage disposer, and finally import the food waste, otherwise it may cause the drain pipe to be blocked.
3. When using the air switch, make sure the air switch is clean. If there is water accumulated for a long time, the air switch will fail.
4. In the process of operation, the motor will stop automatically in case of locked rotor. At this time, cut off the power supply and wait for 1 minute before removing the locked rotor manually.
5. In order to avoid injury, when the machine is used near the child, it should be watched.
6. When the machine is running, do not put your hand into the machine.
7. Before attempting to remove the blockage or foreign matters, turn off the appliance switch or pull the plug out of the socket.
8. When it is necessary to clear the plug, long handle wooden objects, such as wooden spoon and long handle of broom, shall be used to extend into the grinding chamber.
9. Use long handle clamps or pliers when removing foreign matters inside the disposer.
10. In order to reduce unnecessary damage to this product caused by special items, please do not pour the following items into this product: utensils cannot be used to handle hard substances, such as glass and metal, a large number of clam shells or oyster shells, corrosive pipeline cleaners or similar products, porcelain, plastic materials, whole and long bones, tableware, hot grease, whole corn core, corn skin, bamboo shoot skin, large quantity of fish scales and so on.
11. When not using this product, please block the basin to avoid foreign matters falling into the machine.
12. Please install the splash shield before starting the machine.
13. If the power cord is damaged, to avoid danger, it must be replaced by the manufacturer or professionals or maintenance department or similar full-time personnel.
14. Please be sure to install according to the relevant local drainage pipe and electrical regulations.

Cleaning, maintenance and repairing

I. Daily cleaning

The motor has been permanently lubricated. The disposer has a self-cleaning function every time it works. Do not pour chemical cleaners and lye into the disposer to prevent the internal metal parts from being corroded. If you operate like this, the damaged parts can be easily identified, which will void the warranty.

Stainless steel grinding plate will deposit some scale, which may look like rust, please don't worry.

II. Fault search

Before you need to seek for repair or replacement of spare parts in case of problems, we suggest you check as follows:

1. Excessive noise (except for handling bones and nuts): spoons, caps or other objects may fall into the disposal unit when using the garbage disposer. At this time, turn off the power supply and faucet. After the disposer stops completely, remove the splash shield, take out the object with the long handle tool, and then cover the splash shield back.
2. Unable to start: According to your machine model and the structure of the power cord, unplug or turn off the wall power switch, remove the basin plug and splash guard, and check whether the "Reset key" is disengaged. The red "reset key" is located on the lower part of the disposer. If it is detached, it means that the machine is in a jam state, please contact the company for after-sales processing or follow the card machine process. If the "reset key" does not come off, check that the disposer's connection cable is disconnected. Check the power switch, safety brake or current breaker. If the wiring and electrical parts are intact, it may be a problem inside the disposer. It needs to be repaired or replaced.

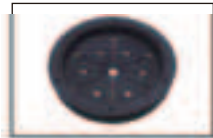
3. The grinding plate cannot rotate freely: please turn off the machine, and then check whether there is any foreign matter between the grinding plate and the grinding ring of the disposer. Stir the grinding plate to remove the foreign matters with long handle tool. If there is no foreign matter, it may be a problem inside the machine, which needs repairing or replacing.

4.If you accidentally drop something that can't be handled and turn it in the grinding chamber, then you can unplug the power supply, take out the splash shield, and use a long clamp to take out the things, install the splash proof cover, plug in the power supply and start it. (The operation steps are shown in the figure below)

5. If the machine is not working or jammed due to carelessness, you can unplug the power supply, take out the splash shield, and use a longer and harder stick (such as screw, knife, etc.) to touch the grinding plate, and turn it back and forth to make it rotate smoothly. Then press the reset switch shown in the figure below)



1.Power extraction



2.Take out the dust cover



3.Take things out with long clips



4. Use a longer and harder stick (such as a screwdriver, etc.) to touch the grinding plate and turn it back and forth



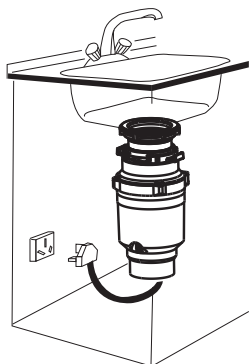
5. Press the reset switch button



6. Replace the splash shield and start the test machine

Note

1. Socket space shall be reserved in the cabinet! The length of the power line is 1m, and the current carrying capacity of the power socket must be more than 10A.
2. If there is a reserved switch on the wall, please use the reserved switch control directly. If there is no reserved switch, use the air switch control.
3. If there is no air switch hole reserved on the sink table, and there is no reserved switch on the wall, you need to open the hole yourself.



⚠ Connect with the reserved socket in the cabinet

Frequent problems and treatments

Serial No.	Frequent problems	Causes	Treatments
1	Abnormal sound during crushing	There is spoon, cap, or other foreign matters in the crushing cup.	Turn off power and water, and use the long handle tool to remove the foreign matters.
2	Unable to start	Rotor locked, Red button disengaged.	Turn off the power supply and use the long handle tool to move the grinding plate to ensure that it can rotate freely. Check the red button and keep it pressed.
3	Machine leakage	1. Improper installation of water outlet (whether the washer is tightened). 2. The support ring is not tightened. 3. The shockproof seal ring has problems or is not installed in place.	1. Check whether the washer is tightened and reinstall the water outlet. 2. Rotate the support ring and tighten it. 3. Check the sealing ring and tighten it.
4	Leakage of drainage elbow	1. Pipeline damage. 2. Press plate loose (screw not tightened). 3. Whether the position is correct.	1. Replace the pipeline. 2. Adjust the pressing plate and lock the screw. 3. Check whether the installation position of the drainage elbow is correct. If the position is wrong, reinstall it.
5	Unsmooth running water	1. The splash proof cover are blocked by grease and foreign matters. 2. There is residual kitchen waste in grinding plate. 3. The bend is blocked by fiber and foreign matters. 4. Water pipe is blocked.	1. Turn on the faucet and wash it with warm water. Push the foreign matters into the disposer with basin plug. 2. Start up and run the machine, smash the garbage thoroughly, unplug the power supply, and take out the foreign matters with the long handle tool. 3. Remove the elbow and clean it. 4. Clean and dredge the downpipe with warm water and hot water.

