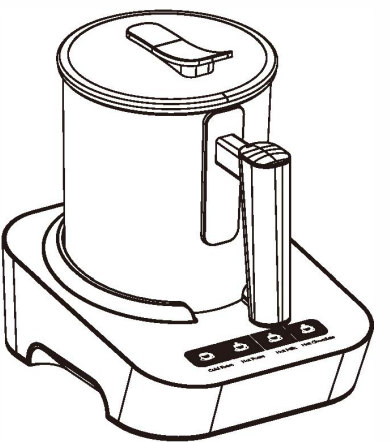


# Wamife

## Milk Frother



### INSTRUCTION MANUAL

Model: TF101

For your safety and continued enjoyment of this product, always read the instruction manual carefully before using.

### IMPORTANT SAFEGUARDS

When using electrical appliances, basic safety precautions should always be followed, including the following:

- Read all instructions.
- After having the packaging removed, check that the appliance is intact. If in doubt do not use the appliance and contact your sales agent.
- The parts of the packaging, plastic bags etc. must not be left within the reach of children as they are potential sources of danger.
- DO NOT touch hot metal surfaces.
- To protect against fire, electric shock and personal injury do not immerse cord, plugs, or appliance in water or other liquid.
- Never immerse the base in water or any other liquid for cleaning.
- The appliance is not intended for use by persons (including children) with reduced physical, sensory or mental capabilities, or lack of experience and knowledge, unless they have been given supervision or instruction.
- Children should be supervised to ensure that they do not play with the appliance as Toy.
- Unplug from outlet when not in use and before cleaning. Allow to cool before putting on or taking off parts, and before cleaning the appliance.
- DO NOT operate any appliance with a damaged cord or plug or if the appliance has been damaged in any manner. Return the appliance to the nearest shop for examination or repair or send back to company.
- The use of accessory attachments not recommended by the appliance manufacturer may result in fire, electric shock or personal injury.
- DO NOT use outdoors.
- DO NOT let cord hang over edge of table or counter, or touch hot surfaces.
- DO NOT place on or near a hot gas or electric burner, or in a heated oven.
- Always attach plug to appliance first, then plug cord into the wall outlet.
- To disconnect, turn the power switch off, then remove plug from wall outlet.
- DO NOT use appliance for other than intended use.
- Use extreme caution when disposing hot steam.
- The milk pitcher is not suited for microwave use.
- Only the supplied milk pitcher can be placed on heating platform of the base.
- DO NOT use a cracked pitcher or a pitcher having a loose or weakened handle.

### SAVE THESE INSTRUCTIONS

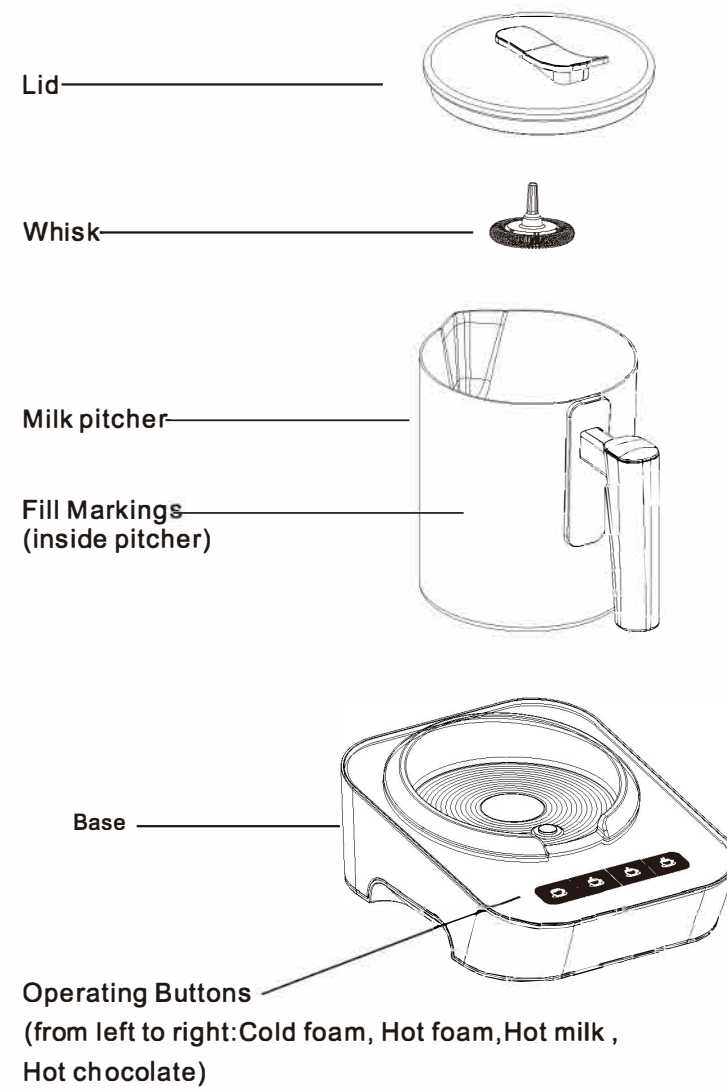
#### CAUTION:

This appliance is for household use. Any servicing other than cleaning and user maintenance should be performed by an authorized service representative.

- Do not immerse base in water or try to disassemble.
- To reduce the risk of fire or electric shock, do not remove the base. No user serviceable parts inside.
- Repair should be done by authorized service personnel only.
- Check voltage to be sure that the voltage indicated on the name plate agrees with your voltage.
- Keep your hands and the cord away from hot parts of the appliance during operation.
- Never clean with scouring powders or hard implements.

#### WELCOME AND THANK YOU

Thank you for choosing the TF101. This compact and space saving item froths and heats your milk completely and automatically. It is easy to use, easy to clean. Use it for hot chocolate, frothed milk, iced cappuccinos, heating milk. Please read all of the instructions in this booklet before operating your new machine. Understanding and complying with these instructions is essential to ensure that the machine is utilized without risk and to ensure safety during operation and maintenance.



#### Before First Use

Clean the milk pitcher and the disks under running warm water. Make sure the underside of the milk pitcher is completely dry.

#### Caution:

- Maximum Capacity - FROTHING:** never fill more than 120ml - 150ml. (see the function marking inside milk pitcher)
- Maximum Capacity - HEATING:** never fill more than 400ml. (see MAX marking inside milk pitcher)

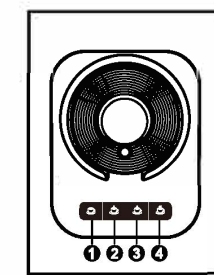
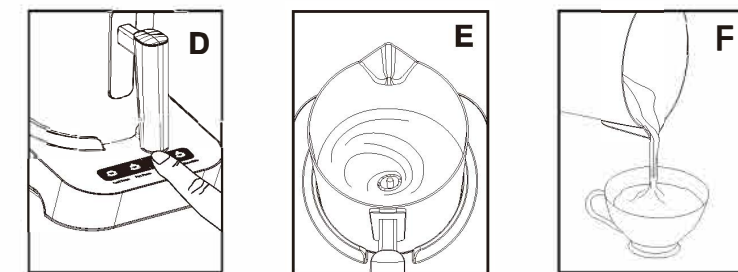
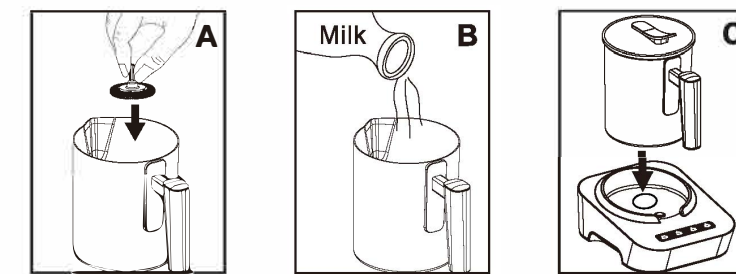
#### Usage

1. Plug in appliance.
2. Remove lid from milk pitcher.
3. Put in milk frother (A)
4. Pour fresh cold milk into the milk pitcher. (B)
5. Place pitcher on heating platform. (C)
6. Make sure underside of the milk pitcher is dry.
7. For frothing and heating push the related button. (D)
8. The button illuminates and the Cold foam/Hot foam/Hot milk/Hot chocolate action starts automatically. (E)
9. When the milk has reached the maximum temperature, the appliance will automatically shut off. The indicator light turns off and the frothing action stops.
10. Pour drink into glass (F)

#### Caution:

- the milk pitcher is hot, Always lift the pitcher with the handle.
- the bottom of the pitcher is hot. Only place the milk pitcher on a heat resistant surface;
- Do not place the milk pitcher in the microwave oven or on any other heating surface.

#### Operation steps for 4 functions



If the heating plate or the bottom of the milk pitcher is still hot, the appliance may not turn on. In this case, remove the milk pitcher. Cool it down by running it under cold water. Make sure the underside bottom is dry and start over.

#### Which milk?

All kinds of milk can be used with this appliance (Whole, 2%, 1%, skim, even soy milk). Skim milk will produce the thickest, most dense froth. Soy milk will produce froth with somewhat larger bubbles.

#### 1 Cold foam

Add cold milk; It froths non heating, takes 2 minutes and reach normal temperature state.

#### 2 Hot foam

Add cold milk; It froths and heating, takes 3.5 minutes and the temperature reaches 65±5°C.

#### 3 Hot milk

Add cold milk; It heating and maybe will produce a small amount of milk froth, it takes 4.5 minutes and the temperature reaches 65±5°C.

#### 4 Hot Chocolate

Add cold milk and Chocolate powder; It heating and maybe will produce a small amount of milk froth, it takes 6 minutes and the temperature reaches 80±5°C.

Wamife  
— Make Life Easier —



Made in China