

20V MAX IMPACT WRENCH

3500007 - Instruction Manual



CONTENTS

Safety Instructions

1

Safety Instructions

2

Extension Cords

3

Safety Symbols

4

Specification

5

Installing a Socket, Direction Switch, Removing Lug Nuts

6

Reinstalling Lug Nuts

7

Maintenance & Care, Troubleshooting

8

Warranty

9

WARNING

PLEASE READ THESE INSTRUCTIONS CAREFULLY AND KEEP FOR FUTURE REFERENCE

WARNING! Read all safety warnings and instructions. Use the 20V MAX Impact Wrench in accordance with these instructions, taking into account the working conditions and the work to be performed. Using this power tool for purposes other than those intended could result in rendering your vehicle in an unsafe condition and may result in serious injury or death.

This 20V MAX Impact Wrench is intended for domestic use only. It should not be used for commercial purposes.

Where possible dress appropriately. Do not wear loose clothing or jewellery whilst operating this tool. Keep your hair, clothing and gloves away from moving parts as they may get caught.

Keep children and bystanders away while operating a power tool as distractions can cause the operator to lose control.

Screws, nuts and bolts that have been tightened to a specific torque should be tightened with a torque wrench once the tyres have been fitted in place.

If you are in doubt as to the correct torque stipulated for your vehicle, consult your car manufacturer and/or vehicle manual specifications.

INTENDED USE.

The 20V MAX Impact Wrench is designed for the fast removal and tightening of vehicle lug nuts when changing tyres. It is intended for occasional intermittent use and not commercial purposes.

CAUTION: The 20V MAX Impact Wrench. This tool is intended for consumer use only and is intended for occasional and intermittent operation. This tool is not designed for professional use. It **SHOULD NOT** be used on trucks and heavy machinery.

This appliance is not intended for use by persons (including children) with reduced physical, sensory or mental capabilities, or lack of experience and knowledge, unless they have been given appropriate supervision and instruction by a person responsible for their safety.

The 20V MAX Impact Wrench is not a toy. Children should be supervised to ensure they do not play with the appliance. Keep the appliance, any attachment and its power cord out of reach of children.

Do not use the appliance for anything other than its intended use.

SAFE USAGE

IMPORTANT: It is highly recommended to use a Torque Wrench after use of the 20V MAX Impact Wrench to correctly and safely set the wheel nut.

Avoid excess use of the Wrench

When tightening a nut/bolt, never allow the Wrench to impact more than 8 times to avoid over tightening.

Do not use the power tool if the switch does not turn off. Any power tool that cannot be controlled with the switch is dangerous and must be repaired.

Do not operate the tool if the 20V MAX Impact Wrench or Battery shows visible signs of damage.

Do not use if the power tool or cord is wet. Never use the power tool in the rain. Water penetrating an electrical device increases the risk of electrical shock.

Do not use the 20V MAX Impact Wrench in potentially explosive environments containing combustible liquids, gases or dust. Electrical tools generate sparks that can ignite the dust or vapours.

Do not place or use the 20V MAX Impact Wrench near open fire or water.

WARNING

PLEASE READ THESE INSTRUCTIONS CAREFULLY AND KEEP FOR FUTURE REFERENCE

Do not overload the tool. Do not apply excessive pressure to the 20V MAX Impact Wrench. If the nuts cannot be moved and the wrench freezes, cease operation immediately and continue with a manual wrench.

Do not attempt to continue to turn the nut manually with the 20V MAX Impact Wrench.

Do not operate the tool without a load at full speed for an extended length of time.

SAFETY INFORMATION.

When using any electrical appliance, basic safety precautions should always be followed to reduce the risk of fire, electrical shock, and injury to persons, including the following:

Always wear eye protection with side shields marked to comply with ANSI Z87.1. This will reduce the risk of serious injury.

Do not operate the tool for more than 10 minutes continuously. Allow the tool to cool down between each use.

Do not force the tool.

Do not touch the 20V MAX Impact Wrench drive with your hands during operation.

Always ensure the vehicle is not running when attempting to change any wheels. When using the tool on alloy wheels, be careful not to over-tighten as it is possible to fracture the alloy wheel mounting. If in doubt, consult a qualified mechanic or garage.

Do not attempt to connect or disconnect the battery from the tool with wet hands. Before connecting the charger to the power supply ensure the voltage corresponds to the voltage limits on the rating plate.

Only use DOMU Brands recommended attachments or those specifically

designed for use with the unit.

Do not operate the appliance if it has been submerged in water or any other liquid to prevent against electric shock, damage and potential injury.

Do not use the appliance if the power cord is damaged. Seek advice and repairs from a qualified electrician or service personnel.

Only a qualified electrician or service engineer should perform repairs to electrical equipment. Improper repairs may place the user at serious risk.

Do not leave the appliance unattended whilst connected to the mains power supply.

Before attempting any cleaning or user maintenance, the battery must be disconnected.

ELECTRICAL SAFETY

Battery Charger plugs must match the outlet. Never modify the plug in any way. Do not use any adapter plugs with earthed (grounded). Unmodified plugs and matching outlets will reduce risk of electric shock.

Avoid body contact with earthed or grounded surfaces such as pipes, radiators, ranges and refrigerators. There is an increased risk of electric shock if your body is earthed or grounded.

Do not expose power tools to rain or wet conditions. Water entering a power tool will increase the risk of electric shock.

Do not abuse the cord. Never use the cord for carrying, pulling or unplugging the power tool. Keep cord away from heat, oil, sharp edges or moving parts. Damaged or entangled cords increase the

WARNING

PLEASE READ THESE INSTRUCTIONS CAREFULLY AND KEEP FOR FUTURE REFERENCE

risk of electric shock.

PROPOSITION 65

WARNING! This product and some dust created by power sanding, sawing, grinding, drilling, and other construction activities contains chemicals known to cause cancer, birth defects or other reproductive harm. Some examples of these chemicals are:

- Lead from lead-based paints
- Crystalline silica from bricks, cement and other masonry products
- Arsenic and chromium from chemically-treated lumber

Your risk from these exposures varies, depending on how often you do this type of work. To reduce your exposure to these chemicals, work in a well-ventilated area and always use approved safety equipment such as dust masks that are specially designed to filter out microscopic particles.

SAFETY SYMBOLS

The following safety symbols may appear on this product. Please ensure you understand their meanings before operating this tool in order to prevent personal injury and avoid damage to the tool.



**USE
PRECAUTION**
For your safety



**INSTRUCTION
MANUAL**
Read and understand



**RISK OF
ELECTRIC SHOCK**



UNSUITABLE WEATHER
Do not use in wet
conditions



RISK OF INJURY
Keep hands at a
safe distance



PROTECTIVE GLOVES
Must be worn when
handling tool



EAR PROTECTION
Must be worn



EYE PROTECTION
Must be worn

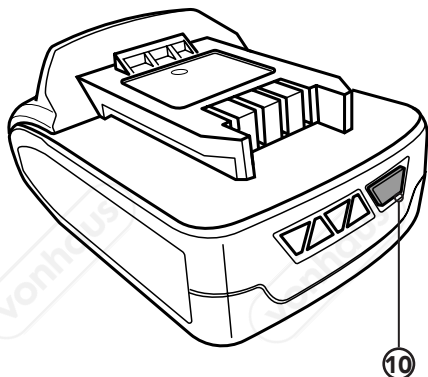


REMOVE BATTERY
From the appliance
before cleaning

BATTERY CAPACITY INDICATOR

When in use you can check the status of the 20V MAX Battery Pack by pressing the Charge Level Indicator Button (10).

Pressing this will illuminate the 20V MAX Battery's level of charge.



0-10% Charged



10-25% Charged



25-50% Charged



50-75% Charged



100% Charged

CHARGING LIGHTS

Connect the Charger to the power outlet socket.

The charging light meanings are outlined below.

GREEN: Ready to charge/charged.

RED: Charging.

FLASHING RED & GREEN: Battery and/or charger is damaged.

Frequently monitor the Charger and 20V Max Battery while connected.

Unplug the Charger and disconnect it from the 20V Max Battery when finished.

Allow the 20V Max Battery to cool completely before using it.

Store the Charger and 20V Max Battery indoors, and out of reach of children.

NOTE if the battery does not fit properly, disconnect it and confirm that the 20V Max Battery is the correct model for this charger as shown on the specification chart. Do not charge any other Battery that does not securely fit the charger.

SPECIFICATION

BATTERY CAPACITY

Amps

??

VOLTAGE

V

20V MAX

IMPACT RATE

IPM

0-2700

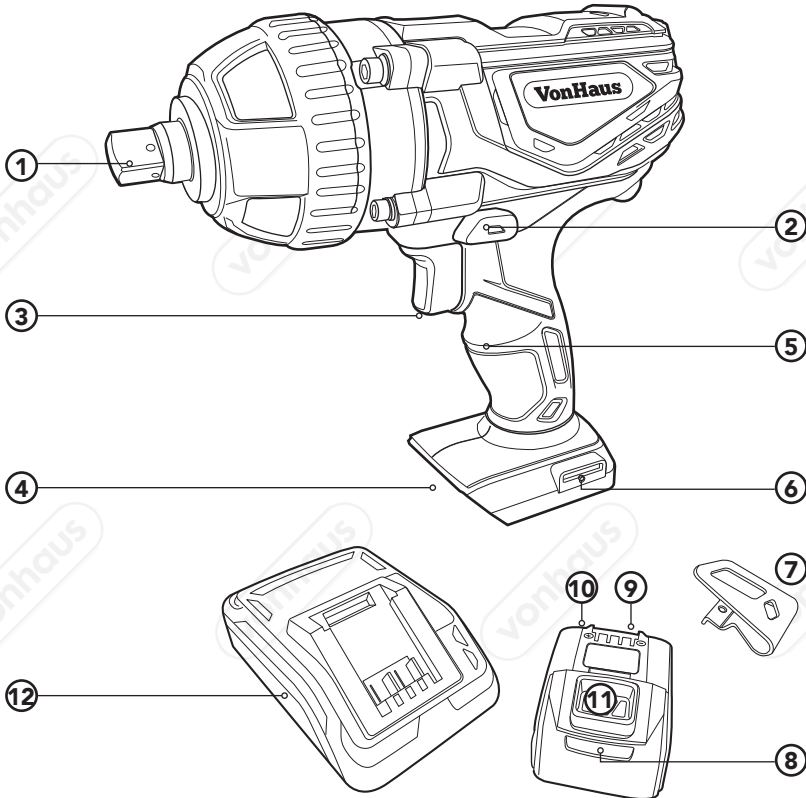
ANVIL

1/2 in square

CHARGE TIME

mins

??



1. 1/2 Inch Anvil.
2. Direction Selector Switch.
3. Trigger.
4. Battery Socket.
5. Handle.
6. Belt Clip attachment point.

7. Belt Clip.
8. 20V MAX Battery Pack.
9. Battery Indication Level (not shown).
10. Charge Level Indicator Button (not shown).
11. Battery Release Button.
12. Battery Charger.

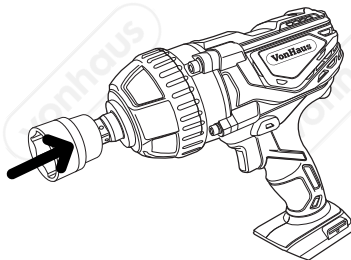
INSTALLING A SOCKET

Always ensure the 20V MAX Battery Pack (8) is removed before attaching a socket to the tool.

When installing a socket, align the holes in the side of the socket with the Anvil (1). Press the socket on until the Anvil engages in the hole.

To remove the socket, pull the socket off the Anvil (1).

CAUTION When removing a socket or bit from the tool, avoid contact with skin and use proper protective gloves when grasping the socket, bit or accessory. Accessories may be hot after prolonged use.

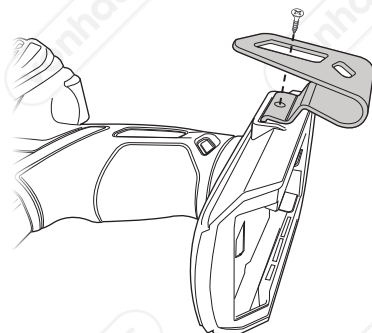


INSTALLING THE BELT CLIP

Before fitting the Belt Clip (7), set the Direction Selector Switch (2) in the central (off) position and ensure the 20V MAX Battery Pack is removed.

The Belt Clip can be attached to either side of the Tool using the small screw supplied. Tighten the screw securely using a screwdriver (not supplied).

To reduce the risk of serious injury, do not suspend the Tool overhead or suspend objects from the Belt Clip. Only hang the tool's Belt Clip from a suitable work belt.



DIRECTION SELECTOR SWITCH

WARNING Never tape the trigger switch down to provide continuous high speed. The tool may fail under such conditions.

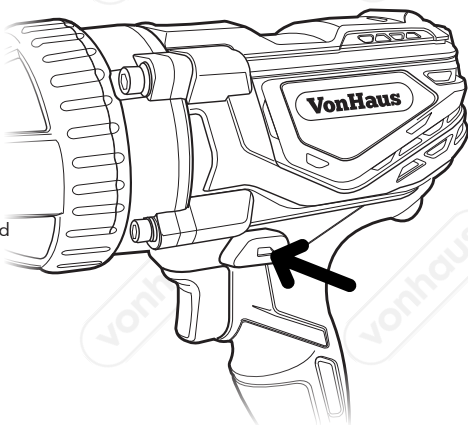
DIRECTION SWITCH

This feature is selected via a slide switch located above the Trigger (3). To select direction of the Wrench rotation, simply push the button fully in on the left side for reverse rotation. To change to forward direction, push the button fully in on the right.

NOTE: The tool will not run unless the Direction Selector Switch (2) is pushed fully to the left or right.

CAUTION: Never rapidly change the direction of the Wrench.

To prevent gear damage, always allow the motor to come to a complete stop before changing direction.



ATTACHING THE BATTERY PACK

Position the 20V MAX Battery Pack **(8)** at the base of the Handle **(5)**

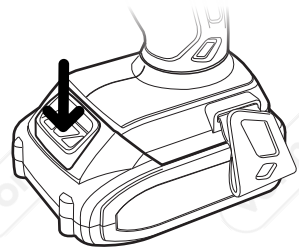
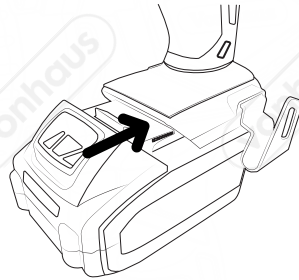
Slide the Battery Pack into the Battery Socket **(4)** ensuring it securely 'clicks' into position.

NOTE: The Battery Pack **(8)** has raised ribs which ensures the Battery can only be inserted into the Impact Wrench one way.

Ensure the Battery Pack is fully charged before each use. This is indicated by pressing the Charge Level Indicator Button **(10)** at the rear of the Battery Pack **(8)**.

TO REMOVE THE BATTERY PACK.

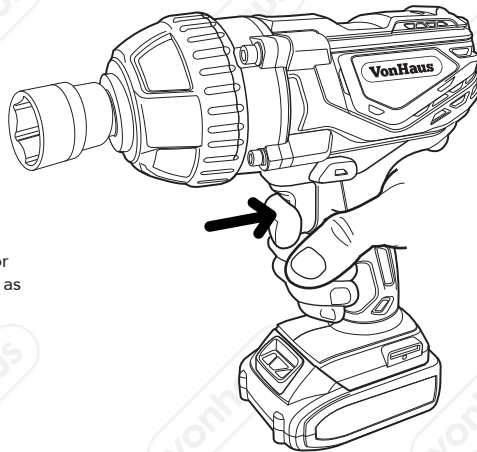
Simply press the Battery Release Button **(11)** and pull the 20V MAX Battery Pack **(8)** out of the Battery Socket **(4)**.



VARIABLE SPEED CONTROL

Simply apply light pressure to the Trigger **(3)** to start the Wrench on a low speed.

Increasing the pressure on the Trigger **(3)** will increase the speed of the Wrench.



NOTE: A high pitched noise may be heard for the Trigger during use. Do not be concerned as this is a normal part of the Trigger function.

REMOVING LUG NUTS

WARNING Do not go underneath your vehicle without Jack Stands. Jacks are not designed to maintain heavy loads for long periods of time.

1. Park vehicle in a safe outside location away from moving traffic. Always set the vehicle parking brake and block the wheels so the vehicle will not move while impact wrench is in use.
2. Plug in at the mains.
3. Pick an impact socket that will fit the wheel lug nut. Press the socket onto the Anvil as shown in "Installing a Socket".

NEVER use sockets that are not specifically designed for use with impact wrenches.

4. Place a jack under the jacking point for the wheel to be removed and raise the vehicle.

5. Support the vehicle by placing jack stands at locations recommended by the vehicle manufacturer.

6. Set the Directional Lever to "L" and carefully loosen the lug nuts. Remove in the order recommended by the manufacturer.

7. If the Impact Wrench cannot loosen the lug nut, use a breaker bar (not included) to break the nut loose before trying again.

8. Remove wheel.

REINSTALLING LUG NUTS

WARNING Do not get under the vehicle without jack stands. Jacks are not designed to maintain heavy loads for long periods of time.

1. Lift wheel back into place.
2. Slide lug nuts onto the wheel bolts in the order recommended by the lug nut manufacturer.
3. Hand tighten the lug nuts until securely fastened.

4. Do not tighten the lug nuts with the impact wrench. Excessive torque may cause damage.

5. Use a torque wrench to check that the lug nuts are tightened enough per the manufacturer's recommendations.

6. Remove jack stands. Carefully lower vehicle and remove the jack. Unplug the impact wrench and store.

IMPORTANT: It is highly recommended to use a Torque Wrench after use of the Impact Wrench to correctly and safely set the wheel nut.

IMPORTANT: Avoid excess use of the Wrench.
When tightening a nut/bolt, never allow the Wrench to impact more than 8 times to avoid over tightening

MAINTENANCE & CARE

Handle the tool and accessories with care and keep them clean to ensure an extended product life.

Do not make any modifications to the tool. Repairs to the tool or power cord should only be carried out by an authorised service technician.

Do not use caustic, abrasive or solvent-based products for cleaning.

Use a soft, dry cloth to wipe the tool clean.

Prevent oil or oil products from entering the plastic casing. The chemicals they contain could corrode or damage the plastic.

Immediately wipe grease and oil-based grime off the tool and accessories with a slightly damp cloth.

Store idle power tools out of reach of children and do not allow people unfamiliar with the power tool or these instructions to operate the 8.5A Impact Wrench.

TROUBLESHOOTING

PROBLEM	SOLUTION
TOOL DOES NOT START.	<ul style="list-style-type: none">• Ensure the 20V MAX Battery Pack is correctly installed.• The Battery Pack may need fully charging.
A WHEEL NUT CANNOT BE UNSCREWED OR TIGHTENED	<ul style="list-style-type: none">• Ensure the correct rotation direction has been selected.
ABNORMAL NOISES OR VIBRATION	<ul style="list-style-type: none">• Socket is not seated correctly.• The Body screws have become loose.• Motor may need repairing. Contact DOMU Brands customer services for support.
EXCESSIVE SPARKING	<ul style="list-style-type: none">• Ensure the motor has come to a complete stop before changing the rotation direction.

DISPOSAL INFORMATION

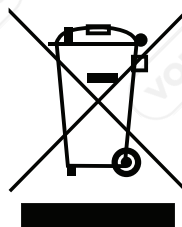
PRODUCT DISPOSAL INFORMATION

For electrical products sold within the European Community, at the end of the electrical product's useful life, it should not be disposed of with household waste. Please recycle where facilities exist.

Contact your local authority for details of collection schemes in your area.

In all circumstances:

- Do not dispose of in domestic waste.
- Do not incinerate.
- Do not abandon in the environment.
- Do not dispose of WEEE as unsorted municipal waste.



HEALTH AND SAFETY FOR BATTERIES

Do not put in fire or mutilate – cells may burst and release toxic material.

Do not short-circuit cells as this may cause fire or burns.

The battery must be removed from the appliance before being scrapped.

The battery is to be disposed of safely.

BATTERY DISPOSAL INFORMATION

Do not mutilate batteries as corrosive electrolytes and flammable materials will be released.

Do not incinerate – Danger of explosion and release of toxic fumes.

Do not dispose of batteries or cells in a charged condition.

Expired lithium-ion batteries must be recycled/disposed of in accordance with the appropriate regulation or legislation. They should be returned to your local warranty agent/stockist.



Li-ion

CUSTOMER SERVICE

If you are having difficulty using this product and require support, please contact **hello@domu.co.uk**

WARRANTY

To register your product and find out if you qualify for a free extended warranty please go to

Vonhaus.com/warranty.

Please retain a proof of purchase receipt or statement as proof of the purchase date.

The warranty only applies if the product is used solely in the manner indicated in the Warnings page of this manual, and all other instructions have been followed accurately. Any abuse of the product or the manner in which it is used will invalidate the warranty.

Returned goods will not be accepted unless re-packaged in its original packaging and accompanied by a relevant and completed returns form. This does not affect your statutory rights.

No rights are given under this warranty to a person acquiring the appliance second-hand or for commercial or communal use.

COPYRIGHT

All material in this instruction manual are copyrighted by DOMU Brands.

Any unauthorised use may violate worldwide copyright, trademark, and other laws.

DECLARATION OF CONFORMITY

We:
DOMU Brands Ltd
5th Floor The Tower
Deva City Office Park
Manchester
M3 7BF

Declare under our sole responsibility that the product:
SKU: 3500007
Description: VonHaus 20V MAX Impact Wrench

To which this declaration relates is in conformity to:

UL Std. 60745-1, 60745-2-2 3rd Ed., rev. March 15, 2011
Certified to CSA Std. C22.2 No.60745-1-07, 60745-2-2-04 2nd Ed., rev. March 13, 2009.

VonHaus.com

Thank you for purchasing the 20V MAX Impact Wrench.

VonHaus® is a registered trademark of DOMU Brands Ltd
Made in China for DOMU Brands Ltd M24 2RW.

VonHaus