

DD274B

Controller Instruction

Control System



Version: A/00

Product Features

Note: 1.The motor with this receiver can run continuously Max. 3 minutes. 2.When the emitter is group controlled, the code is invalid.

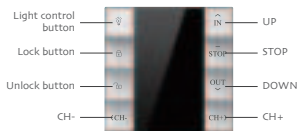


DD274B controller

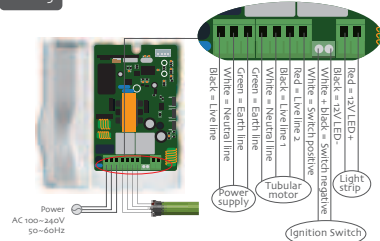
- Wireless reception
- Light touch
- Mechanical limit
- Connectable 12V 24W LED strip
- Input voltage: AC 100~240V 50~60Hz
- Working temperature: -10°C ~ +65°C
- One MB274B controller can store Max. 20 channels, if you add a new channel, first covered the second channel and then covered it in turn

Matchable Emitters

Note: Up button + Stop button = Setting button.

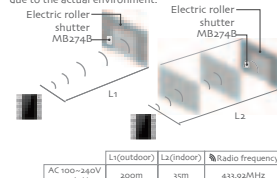


Wiring



Radio Range

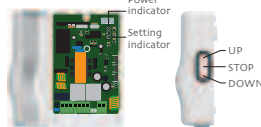
Note: The effective radio distance will deviate due to the actual environment.



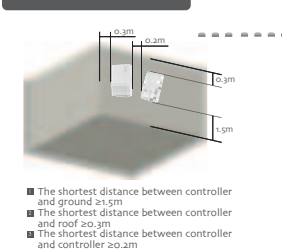
AC 100~240V 50~60Hz	L1(outdoor)	L2(indoor)	Radio frequency
	200m	35m	433.92MHz

Instruction Of Buttons

Note: Up button + Stop button = Setting button.



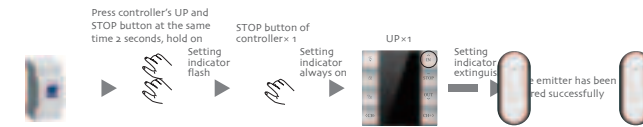
Best Installation Distance



- The shortest distance between controller and ground ≥1.5m
- The shortest distance between controller and roof ≥0.3m
- The shortest distance between controller and controller ≥0.2m

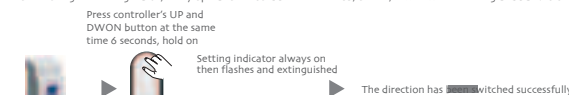
Pairing/Pairing Additional Emitter

Note: During the setting status, every operation should be less than 10s, or else, it will exit the setting and back to original status.



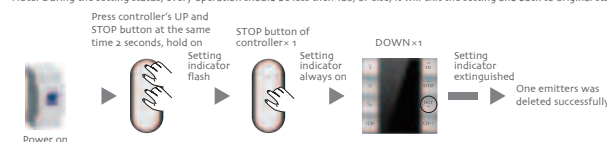
Switch Rotating Direction

Note: During the setting status, every operation should be less than 10s, or else, it will exit the setting and back to original status.



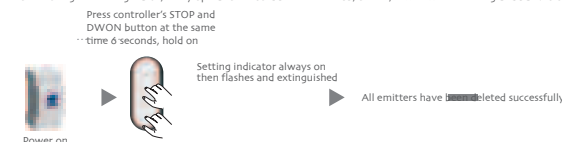
Delete One Additional Emitter

Note: During the setting status, every operation should be less than 10s, or else, it will exit the setting and back to original status.



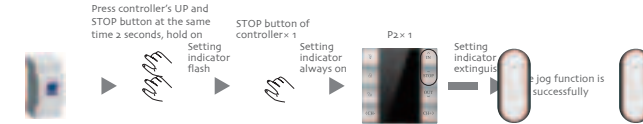
Delete All Additional Emitters

Note: During the setting status, every operation should be less than 10s, or else, it will exit the setting and back to original status.



Jog Function

Note: During the setting status, every operation should be less than 10s, or else, it will exit the setting and back to original status. When the jog function is activated, short press UP or DOWN, the motor will jog running; Press UP or DOWN for more than 2s, the motor continuous run.



RF exposure statement

This equipment complies with the FCC radiation exposure limits set forth for an uncontrolled environment. This transmitter must not be co-located or operating in conjunction with any other antenna or transmitter.

FCC Warning

This device complies with Part 15 of the FCC Rules. Operation is subject to the following two conditions:

- (1) This device may not cause harmful interference, and (2) this device must accept any interference received, including interference that may cause undesired operation.

Note: This equipment has been tested and found to comply with the limits for a Class B digital device, pursuant to part 15 of the FCC Rules. These limits are designed to provide reasonable protection against harmful interference in a residential installation. This equipment generates, uses and can radiate radio frequency energy and, if not installed and used in accordance with the instructions, may cause harmful interference to radio communications. However, there is no guarantee that interference will not occur in a particular installation. If this equipment does cause harmful interference to radio or television reception, which can be determined by turning the equipment off and on, the user is encouraged to try to correct the interference by one or more of the following measures:

- Reorient or relocate the receiving antenna.
- Increase the separation between the equipment and receiver.
- Connect the equipment into an outlet on a circuit different from that to which the receiver is connected.
- Consult the dealer or an experienced radio/TV technician for help.

NOTE 2: Any changes or modifications to this unit not expressly approved by the party responsible for compliance could void the user's authority to operate the equipment.