

# stando.

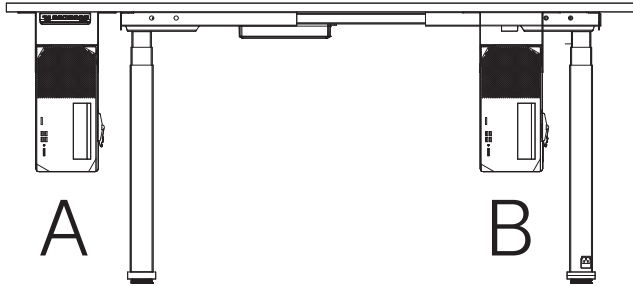
## Universal CPU Mount Instruction Manual

1

This mount gives you the option to mount in 2 positions.

Option A: Mount on the outside of your desk frame. May require you to move the leg inwards before install.

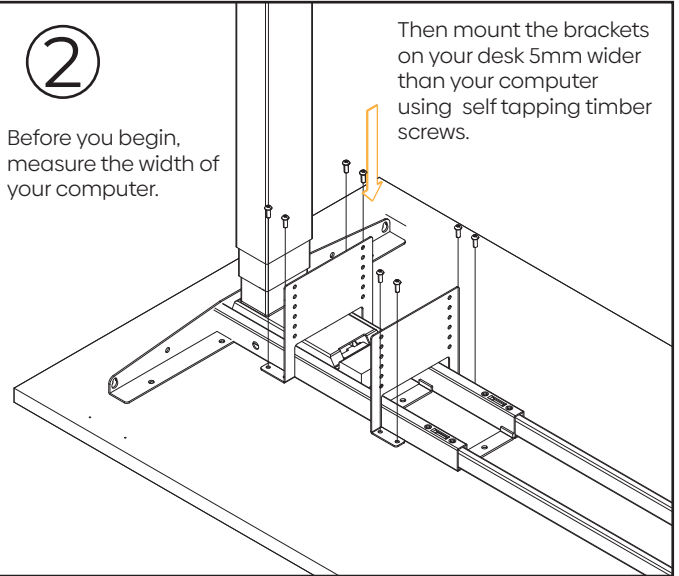
Option B: Mount on the inside of your desk frame.



2

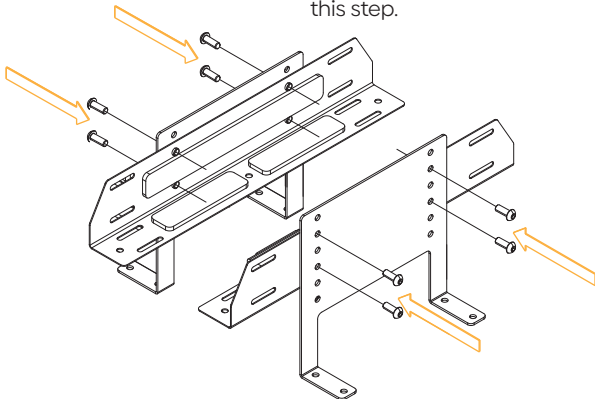
Before you begin, measure the width of your computer.

Then mount the brackets on your desk 5mm wider than your computer using self tapping timber screws.



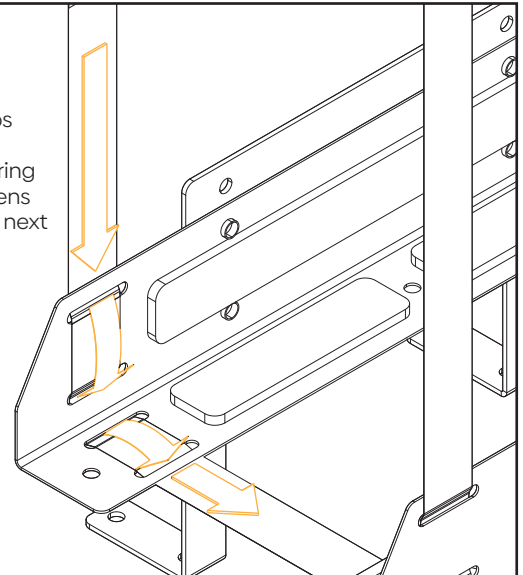
3

Once the brackets are screwed into position, its time to install the mount. Use the short machine screws to complete this step.



4

Loop the straps through the brackets ensuring the buckle opens outwards (see next steps).



5

Loop the straps through the buckles as shown in these 4 steps. When tightening to your computer, have straps tight then push buckle closed which will tighten slightly further for a snug fit.

