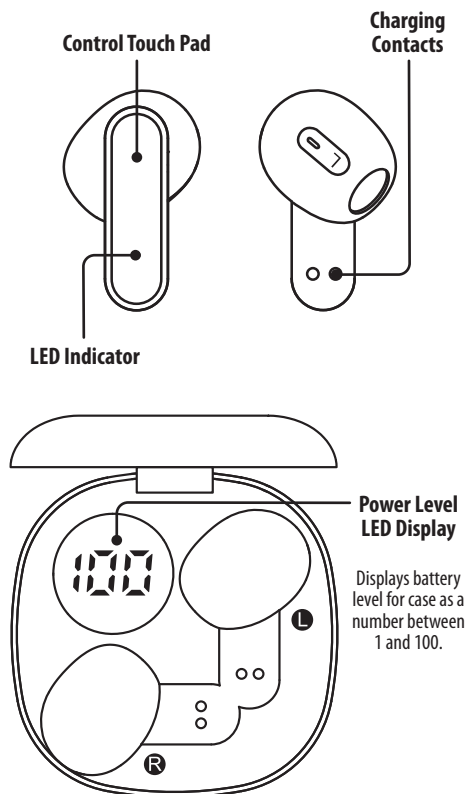


Clearly+ Truly Wireless Earbuds

User's Guide for Model IAEBT145 v3380-01



Controls and Functions



On Ear Controls

Note: The Control Touch Pad is sensitive.

General

Tap and hold for 5 seconds to power ON/OFF.

Phone Calls

Tap to answer/end phone calls.

Voice Assist

Tap and hold for 2 seconds to activate Voice Assistant.

Music

Tap to play/pause music.

Tap twice to skip to the next track (RIGHT).

Tap twice to play the previous track (LEFT).

Tap 3 times to turn volume up (RIGHT).

Tap 3 times to turn volume down (LEFT).

Charging the Case

The earbuds have a total battery life of approximately 6.5 hours at 50% volume. To charge the case, use the **USB-C to USB** cable (included), to connect to the USB port of a powered-on computer or a UL certified USB power adaptor (not included).

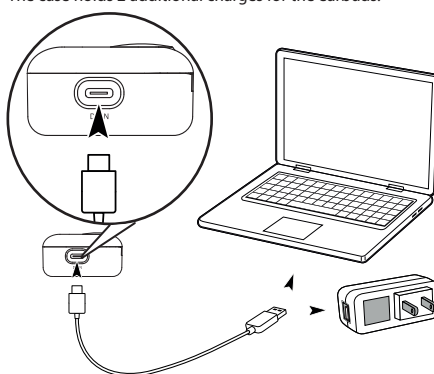
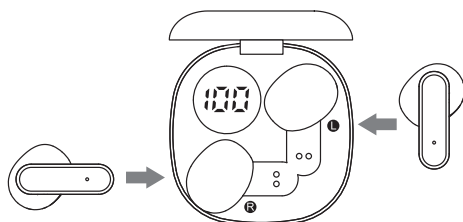
The **Power Level LED Display** will display the charge level of the case with a numeric value between 1-100. The **Power Level LED Display** will also flash while charging.

The total charge time for the case is approximately 1.5 hours.

The case holds 2 additional charges for the earbuds.

Charging the Earbuds

1. Open the cover and place the earbuds on the charging contacts. Be sure to match the left and right earbuds with the correct docking station in the case.
2. The **Power Level LED Display** will display the battery levels of the earbuds as they charge. The **LED Indicator** on the earbuds will turn white as they charge. When fully charged, the **LED Indicator** will turn off. Charging time for the earbuds is approximately 1.5 hours.



Charging Case & Auto-On Feature

While the case power is ON:

- Placing the earbuds in the charging case and closing the case will automatically power the earbuds off and begin charging them.
- Removing the earbuds from the case will automatically power them on, link them, and connect to the last used Bluetooth device (earbuds must have been linked and connected to a Bluetooth device already).

Pairing Bluetooth

Note: When earbuds are powered on, they automatically link and enter pairing mode. You can power on a single earbud to use as a single unit if you wish.

1. With the earbuds powered on, you can connect to your Bluetooth device. When the earbuds are ready to pair, the **LED Indicator** will flash white and blue.
2. On your Bluetooth device, search for nearby devices in your Bluetooth settings and select **IAEBT145**.
3. When successfully connected to your Bluetooth device, a voice prompt will announce "Bluetooth connected." The **LED Indicator** will slowly flash blue.
4. Audio played through the connected Bluetooth device will now be heard through both earbuds. Use the controls on the connected device to play audio and adjust volume.

PLEASE NOTE: Due to the nature of truly wireless earbuds, you may experience slight interruptions with your audio in areas with multiple 2.4Ghz bands or in high wireless traffic areas.

Reconnect Bluetooth

If you have trouble connecting the earbuds and your device or if the earbuds become unpaired, do the following:

1. Delete **IAEBT145** from your list of devices in your Bluetooth settings
2. Press and hold the **Control Touch Pad** for 5 seconds to turn the earbuds off. Press and hold the **Control Touch Pad** for another 5 seconds to turn the earbuds back on.
3. Return the earbuds to the case. Remove them and allow them to automatically enter pairing mode. Connect to your Bluetooth device using the steps above.

Customer Support

Customer Service: 1-888-999-4215 | **Email Support:** prodinfo@dpiinc.com | **Email Parts:** partsinfo@dpiinc.com

For Warranty Information and the most up-to-date version of this User's Guide, go to www.iLiveElectronics.com

To download this User's Guide in English, Spanish, or French, or to get answers to frequently asked questions, visit the support section at: www.iLiveElectronics.com

Para descargar este Manual del Usuario en inglés, español y francés, o para obtener respuestas a preguntas frecuentes, visite la sección de apoyo en: www.iLiveElectronics.com

Pour télécharger ce guide de l'utilisateur en anglais, espagnol ou français, ou pour obtenir des réponses à des questions fréquemment posées, consultez la rubrique d'assistance sur: www.iLiveElectronics.com

Copyright © 2024 Digital Products International (DPI, Inc.) All other trademarks appearing herein are the property of their respective owners. Specifications are subject to change without notice.

FCC Warnings

This device complies with Part 15 of the FCC Rules. Operation is subject to the following two conditions:

(1) This device may not cause harmful interference, and (2) this device must accept any interference received, including interference that may cause undesired operation.

NOTE 1: This equipment has been tested and found to comply with the limits for a Class B digital device, pursuant to part 15 of the FCC Rules. These limits are designed to provide reasonable protection against harmful interference in a residential installation. This equipment generates, uses and can radiate radio frequency energy and, if not installed and used in accordance with the instructions, may cause harmful interference to radio communications. However, there is no guarantee that interference will not occur in a particular installation. If this equipment does cause harmful interference to radio or television reception, which can be determined by turning the equipment off and on, the user is encouraged to try to correct the interference by one or more of the following measures:

- Reorient or relocate the receiving antenna.
- Increase the separation between the equipment and receiver.
- Connect the equipment into an outlet on a circuit different from that to which the receiver is connected.
- Consult the dealer or an experienced radio/TV technician for help.

NOTE 2: Any changes or modifications to this unit not expressly approved by the party responsible for compliance could void the user's authority to operate the equipment.

The device has been evaluated to meet general RF exposure requirement. The device can be used in portable exposure condition without restriction.

Additional Warnings

- **WARNING:** To prevent fire or shock hazards, do not expose this unit to rain or moisture.
- **WARNING:** Where the mains plug or appliance coupler is used as the disconnect device, such disconnect device shall remain readily operable.
- Lithium batteries, like all rechargeable batteries, are recyclable and should be recycled or disposed of according to state and local guidelines. They should never be disposed of in normal household waste, and they should never be incinerated, as they might explode. Contact your local government for disposal or recycling practices in your area.
- This product meets and complies with all Federal regulations.
- **To avoid hearing damage,** make sure that the volume on your music player is turned down before connecting your headphones. After placing headphones in/on your ears, gradually turn up the volume until you reach a comfortable listening level.



WARNING: This product can expose you to chemicals including lead, which is known to the State of California to cause cancer and birth defects or other reproductive harm. For more information go to www.P65Warnings.ca.gov.

This product meets and complies with required Federal product guidelines.