

Decaura®

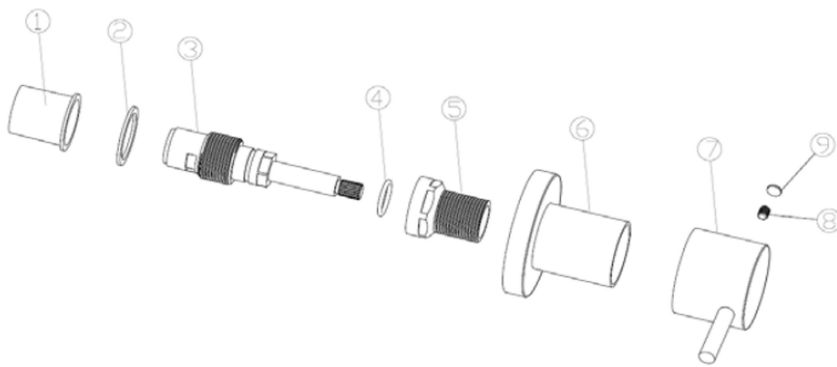
Installation Manual



Wall Top Assemblies

Many thanks for purchasing Decaura products, please check over carefully the surface and accessories to avoid any damage and missing parts.

For Round set



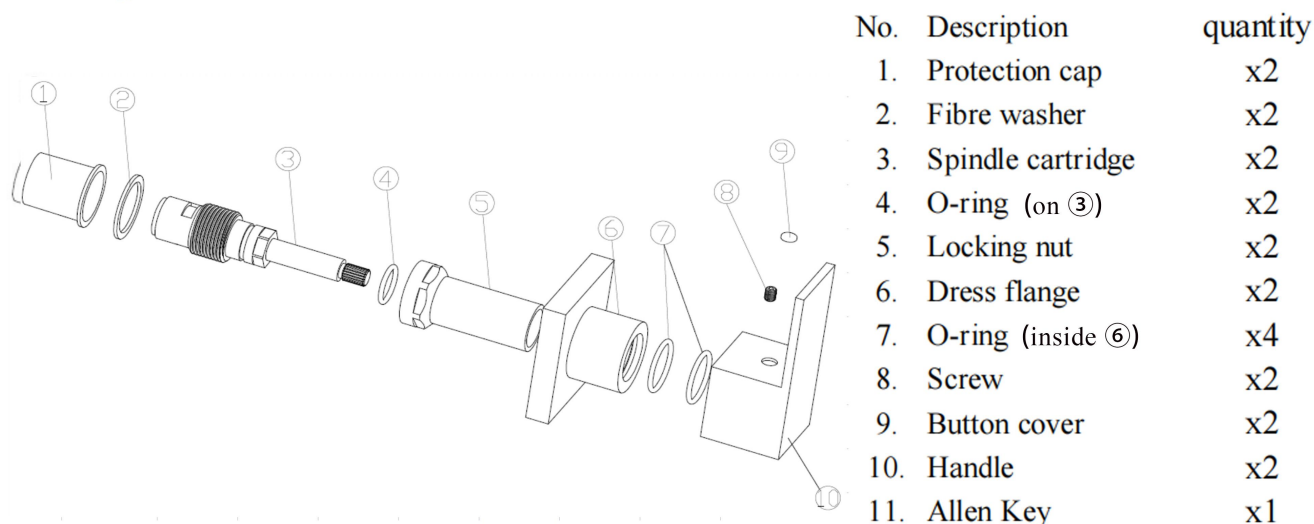
No.	Description	quantity
1.	Protection cap	x2
2.	Fibre washer	x2
3.	Spindle cartridge	x2
4.	O-ring (on ③)	x2
5.	Locking nut	x2
6.	Dress flange	x2
7.	Handle	x2
8.	Screw	x2
9.	Button cover	x2
10.	Allen Key	x1

** This set of tap consists of two separate kits, One for hot water (red washer in bottom of spindle) and another for cold water (blue washer), plus a allen key for screws inside handles. The two units are the same except that the steering of the spindle cartridge is reversed.

Installation Steps

1. Disassemble your new tap in three steps: 1) Take off the button cover ⑨, unscrew ⑧ with allen key and removing the handle ⑦; 2) Take off the protection cap ① and unscrew the dress flange ⑥ by hand; 3) Unscrew the locking nut ⑤ from the Spindle Cartridge ③ .
2. Double check this rubber seal washer (in Red & Blue) at the base of the spindle cartridge **MUST** be in a proper condition. This is very important to seal the tap.
3. Screw in the spindle cartridge by hand until it reach the tap seat. Then **GENTLY TIGHTEN** with a spanner, make sure tight the spindle cartridge with taps sea, any gap will cause leakage.
Important: Don't screw too hard, as it will damage the rubber seal ring or Spindle.
4. Place the fibre washer ② over the spindle and screw the lock nut ⑤ **FIRMLY** with a spanner.
5. Screw the dress flange ⑥ to the locking nut. this only has to be tightened by hand.
6. Rotate the spindle cartridge to the end by hand. (counterclockwise for hot water in the left side, and clockwise for cold water in the right). Put the handle ⑦ to the spindle with the handle downward (The horizontal position for "ON", while downwise for "OFF"). Fasten the handle tightly by screw ⑧ with allen key. Put in the button cover into the hole.

For Square set



** This set of tap consists of two separate kits, One for hot water (red washer in bottom of spindle) and another for cold water (blue washer), plus a allen key for screws inside handles. The two units are the same except that the steering of the spindle cartridge is reversed.

Installation Steps

1. Disassemble your new tap in three steps: 1) Take off the button cover ⑨, unscrew ⑧ with allen key and removing the handle ⑩; 2) Take off the protection cap ① and unscrew the dress flange ⑥ by hand; 3) Unscrew the locking nut ⑤ from the Spindle Cartridge ③ .
2. Double check this rubber seal washer (in Red & Blue) at the base of the spindle cartridge **MUST** be in a proper condition. This is very important to seal the tap.
3. Screw in the spindle cartridge by hand until it reach the tap seat. Then **GENTLY TIGHTEN** with a spanner, make sure tight the spindle cartridge with taps sea, any gap will cause leakage.
Important: Don't screw too hard, as it will damage the rubber seal ring or Spindle.
4. Place the fibre washer ② over the spindle and screw the lock nut ⑤ **FIRMLY** with a spanner.
5. Put the dress flange ⑥ to the locking nut until against to the wall by hand.
6. Rotate the spindle cartridge to the end by hand. (counterclockwise for hot water in the left side, and clockwise for cold water in the right). Put the handle ⑩ to the spindle with the handle downward (The horizontal position for "ON", while downwards for "OFF"). Fasten the handle tightly by screw ⑧ with allen key. Put in the button cover into the hole.

Remarks

1. Products are manufactured as per Australian Standard, and have WaterMark certificate.
2. The length of the cartridge is 92mm, fit for majority users. In case the water inlet seat is too deep, You may need a lengthened spindle cartridge.

Warranty Terms

All products are guaranteed as below:

1. 5 years guarantee against main body and handles.
2. 3 years guarantee against cartridge and valve defaults.
3. 2 years guarantee on washers and O-rings.
4. 3 years guarantee on finishing.

Other Conditions

1. Working pressure: 0.05-1 Mpa.
2. Working temperature: 0-55°C
3. Products are manufactured as per standard AS/NZS 3718:2005.
4. This wall top assemblies can be used for Wall basin taps, shower and bathtub taps.