

Wi-Fi camera

Manual

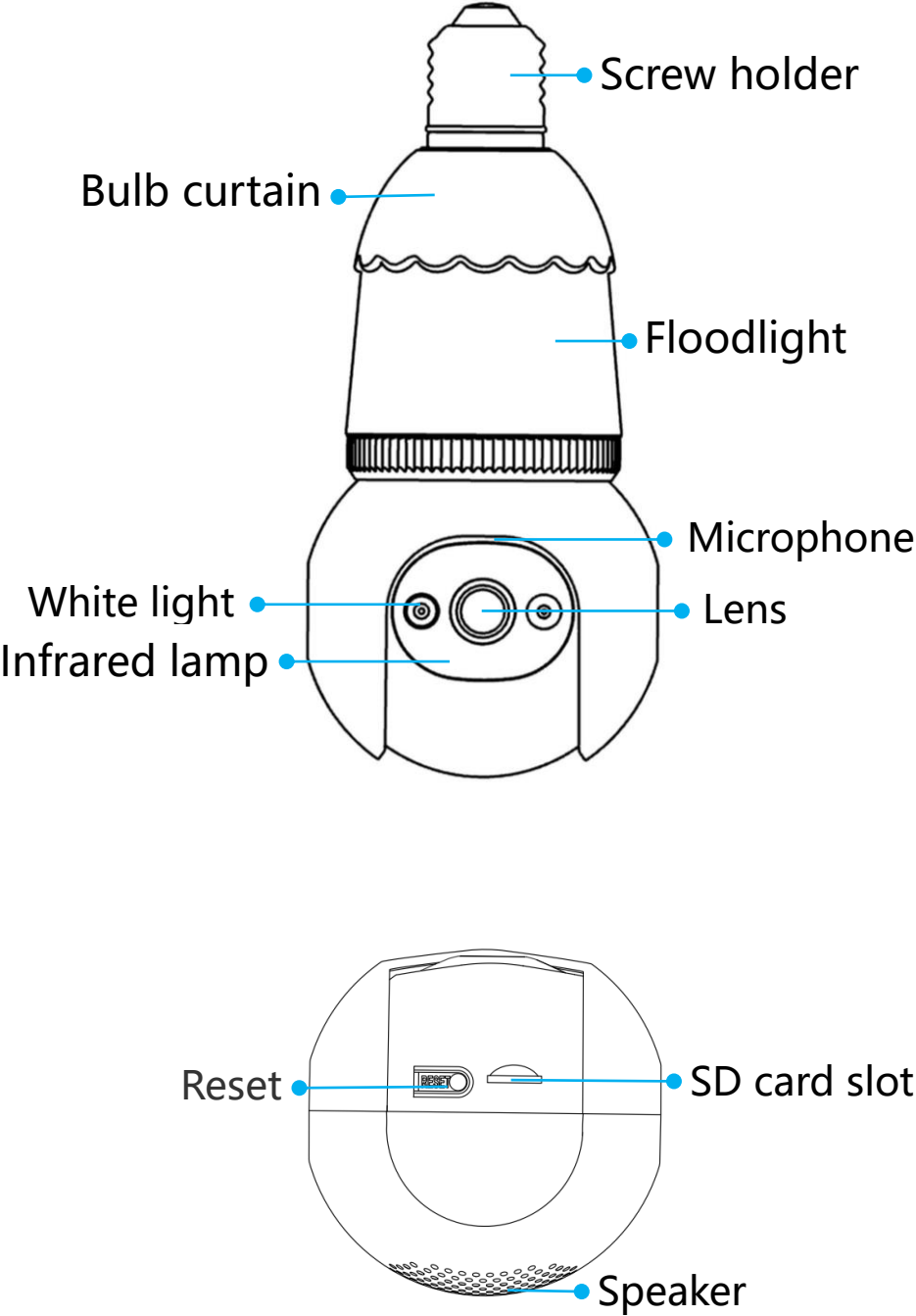
**Please read the user's guide carefully
before using the product and keep it properly.**

1. Packing list

Please unpack the camera carefully and check whether the following accessories are included in the box.

- ① Camera*1
- ② Screw lamp plug *1
- ③ Screw lamp holder *1
- ④ Screw package *1
- ⑤ User's Guide *1

2. Structure diagram

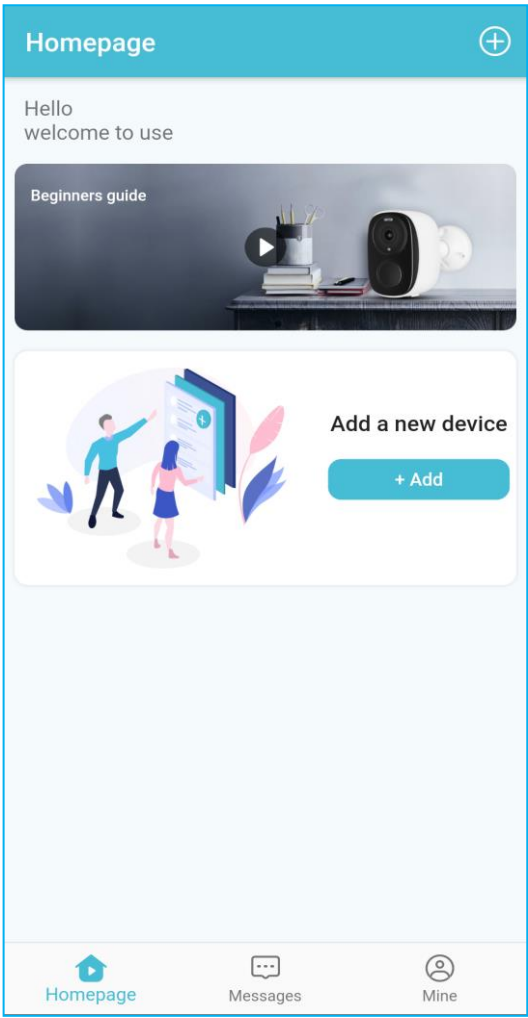
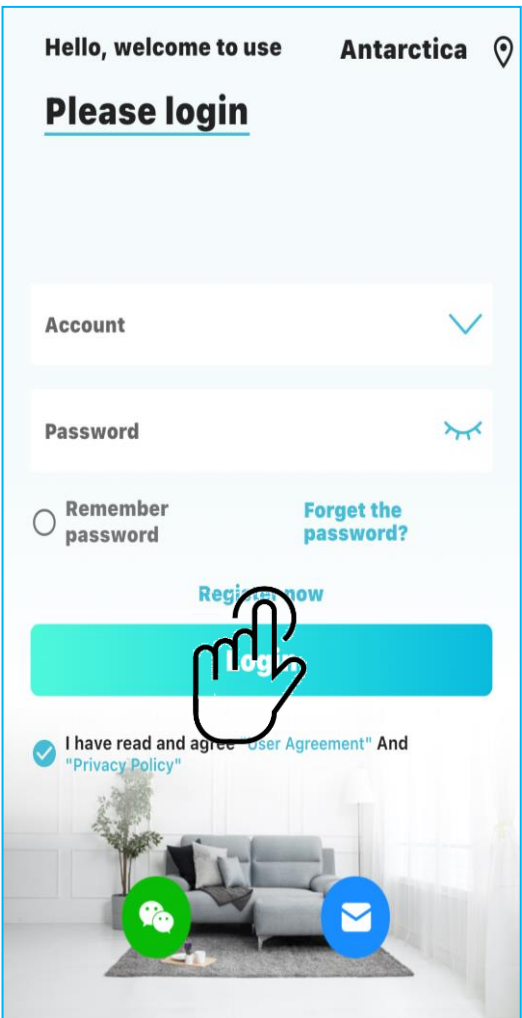


3. Download APP

1) Download the O-KAM Pro app from the APP Store or Google Play. You can also download the app by scanning the QR code above using the QR code scanner in your smartphone.



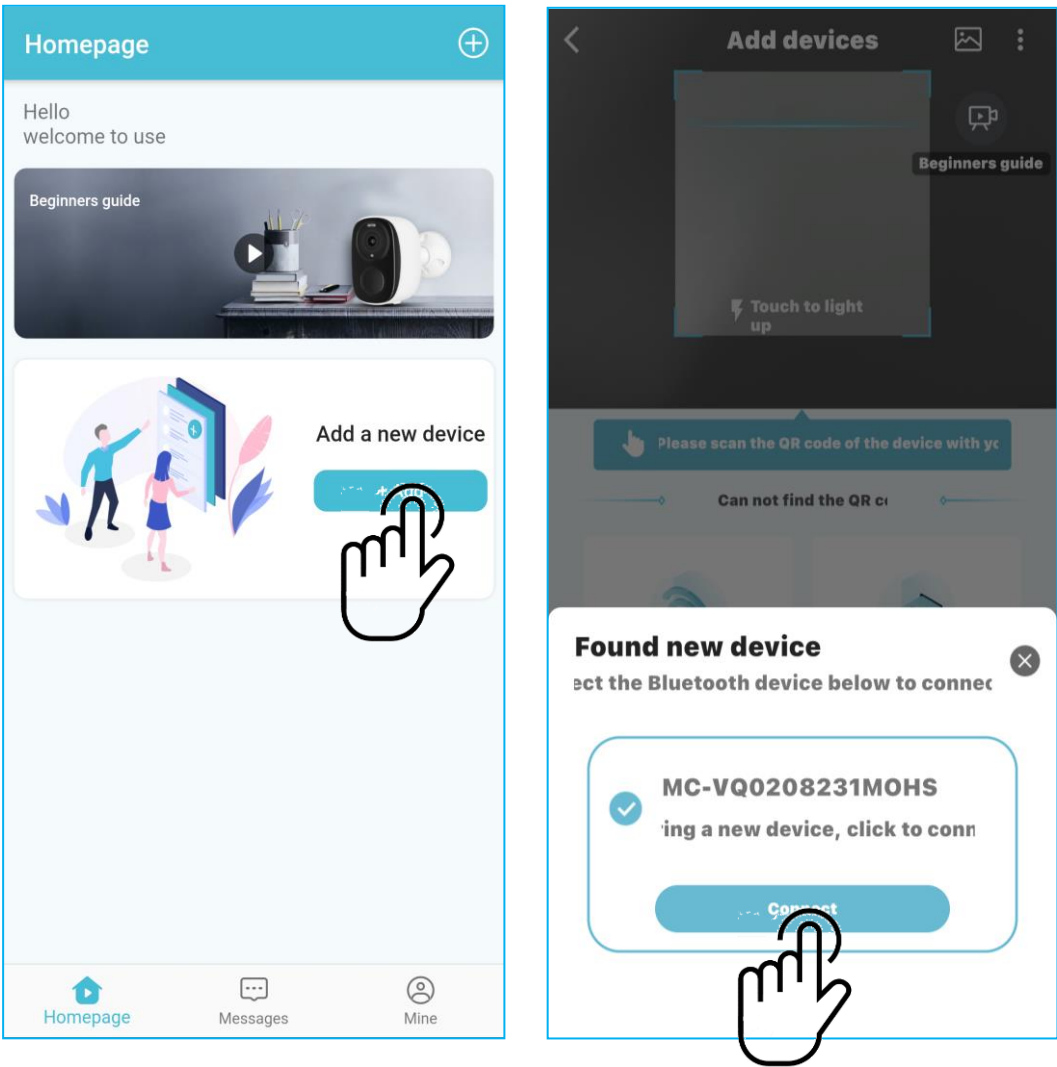
O-KAM Pro



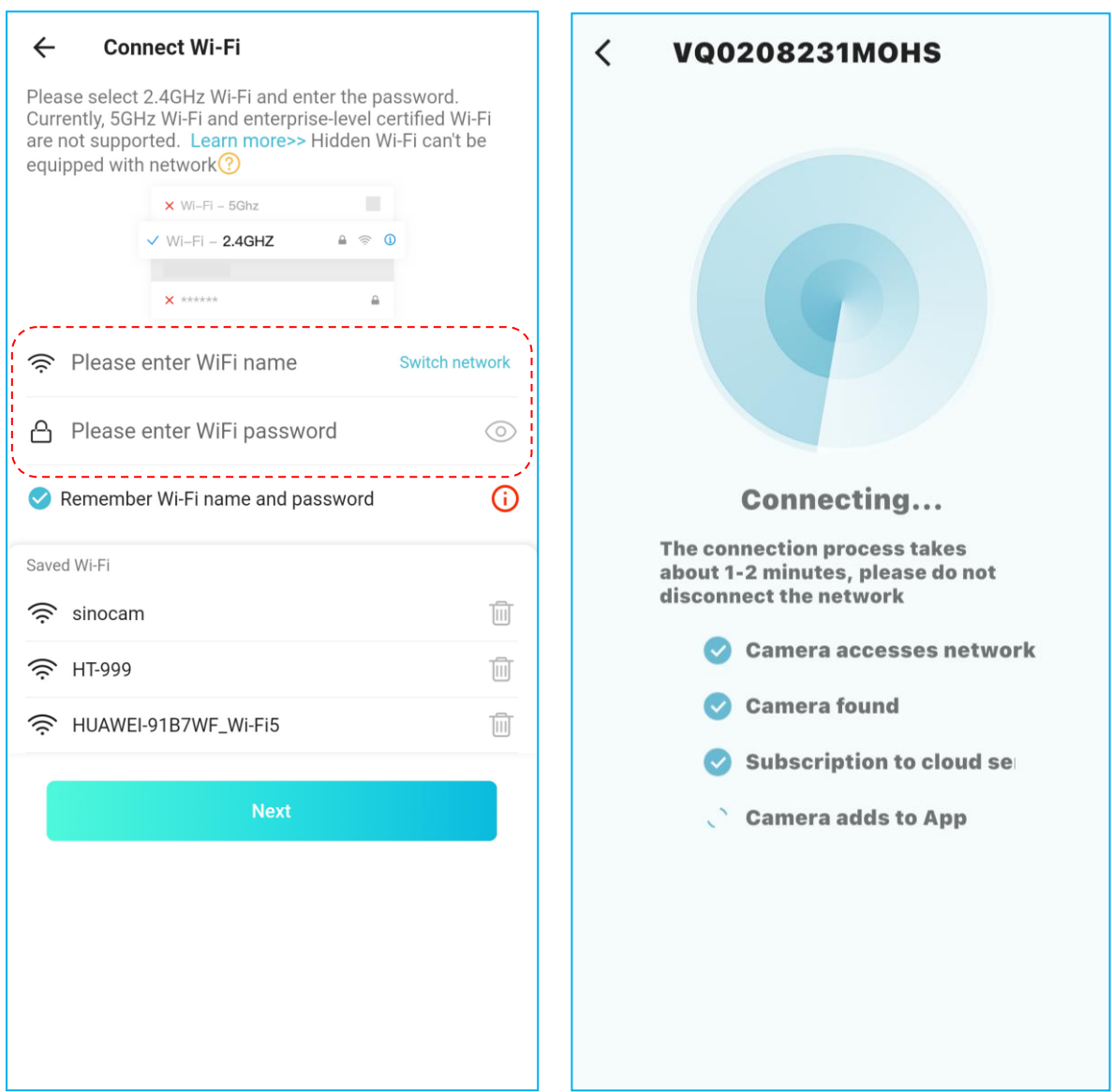
4.Add camera

4.1Connecting method 1: WiFi connection

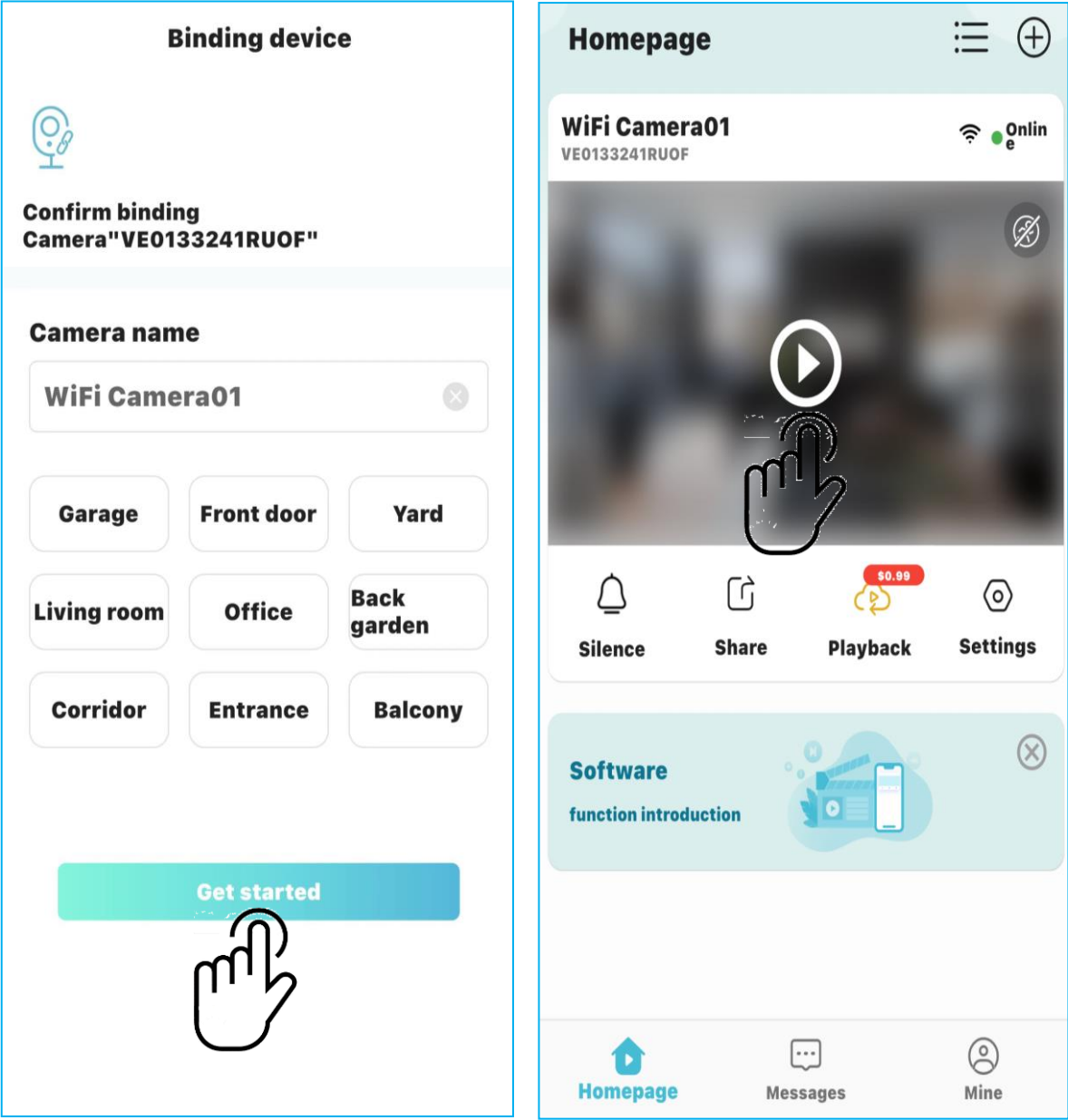
1) Plug in the power supply to power on the camera, wait for the self-check of the device to be completed, and the voice will broadcast "Please use the APP for WiFi configuration". If not, please press and hold the reset button for 3-5 seconds to reset.



2) Enter the name and password of the Wi-Fi network. To keep the connection of WiFi, please put the camera near the router. The camera supports 2.4Ghz Wi-Finetworks. Please make sure that the account password entered is correct before click "Next".And wait patiently for the camera to connect to the WiFi router. During the connection, the camera will give a voice prompt.

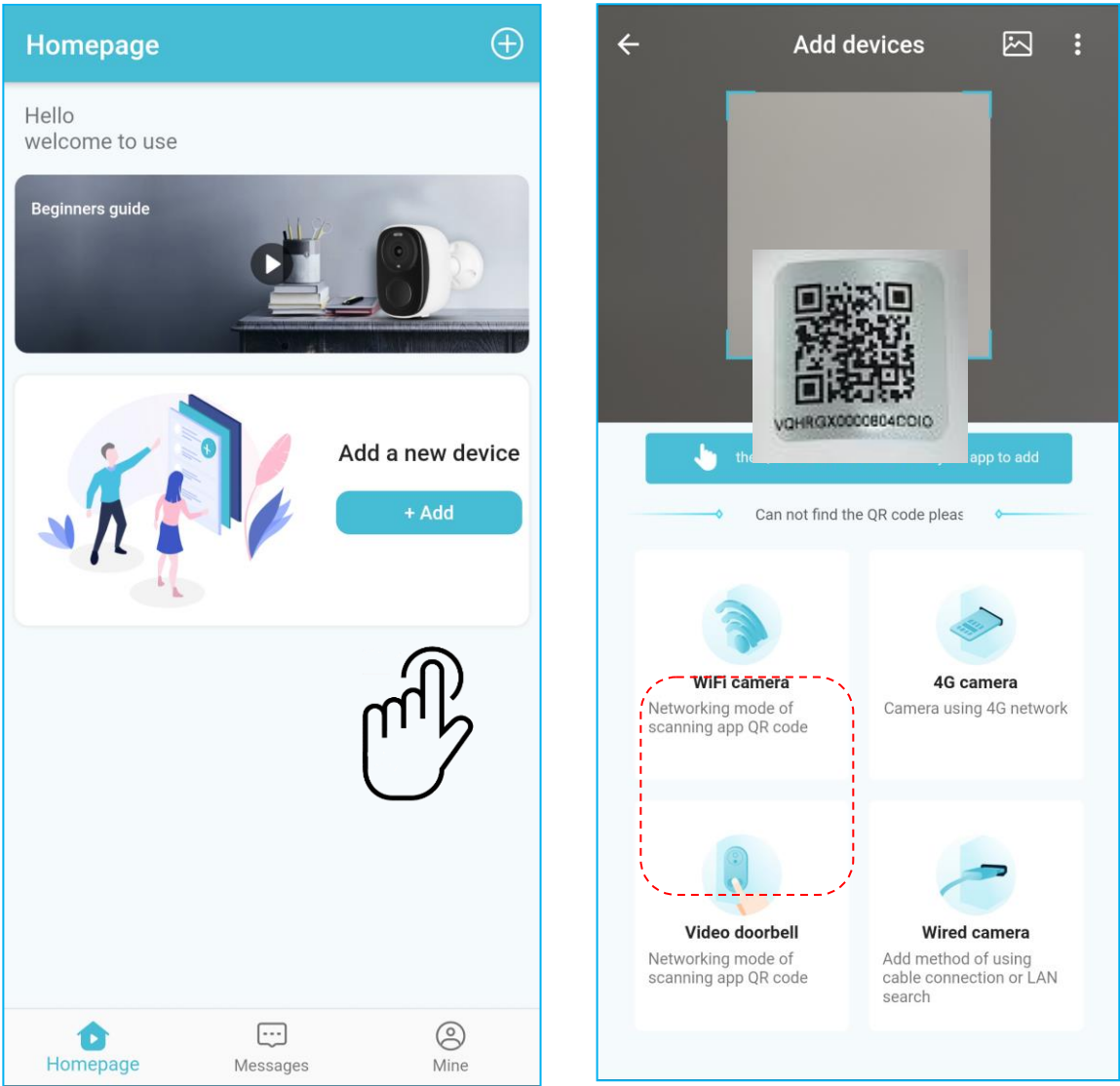


3) it's available to edit the name to distinguish the cameras in different places, and please click "get started". After adding successfully, you can click "Play" sign to view the picture.

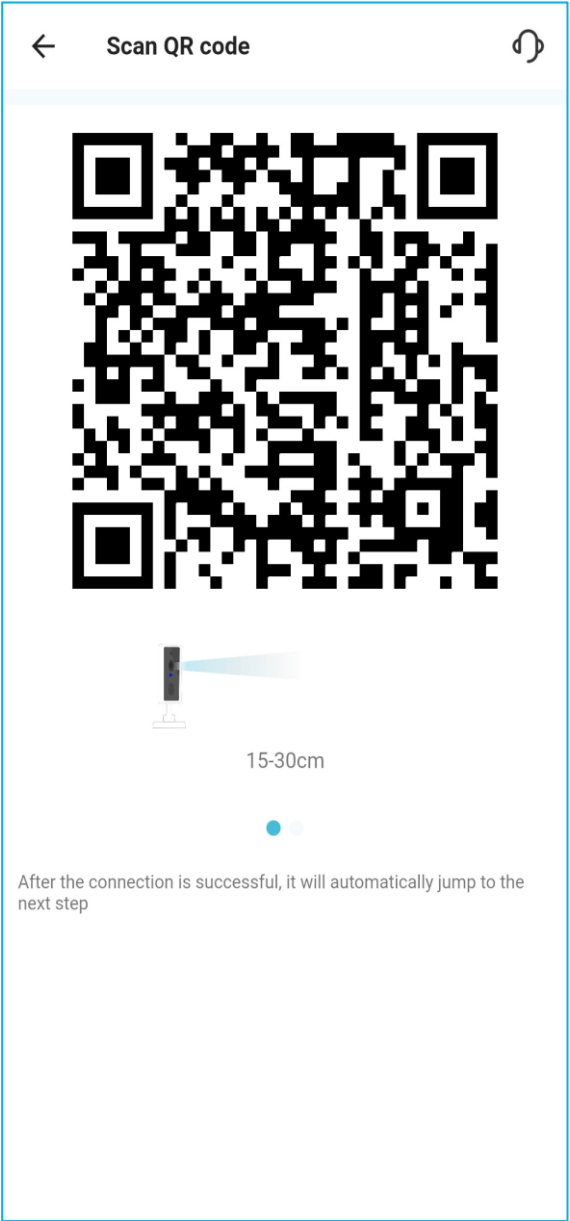
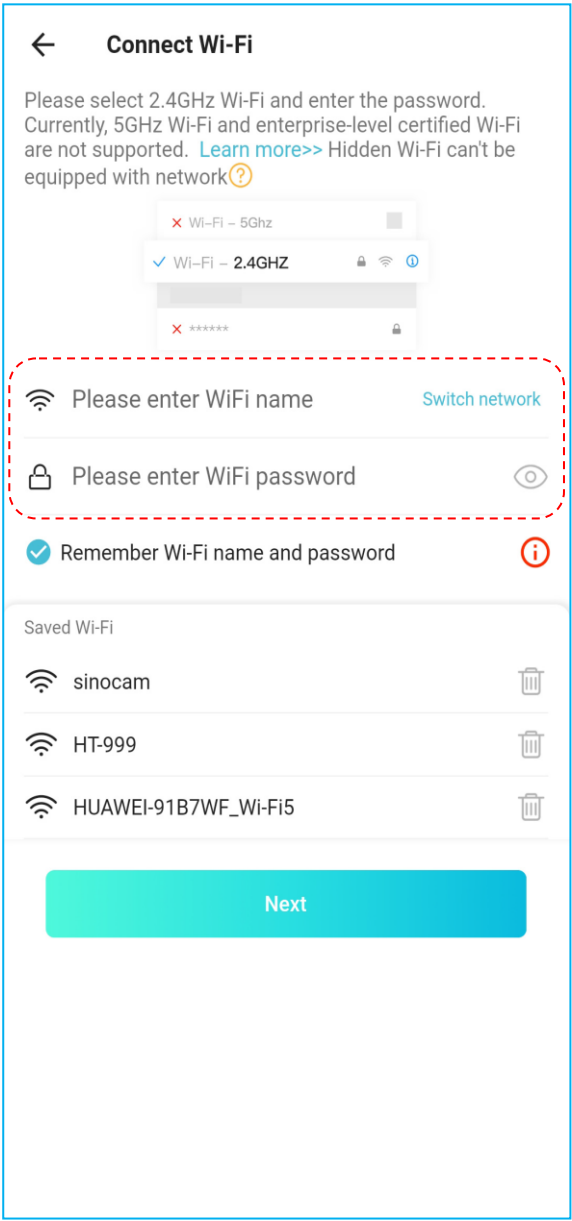


4.2 Connecting Method 2: Two-dimensional code distribution network

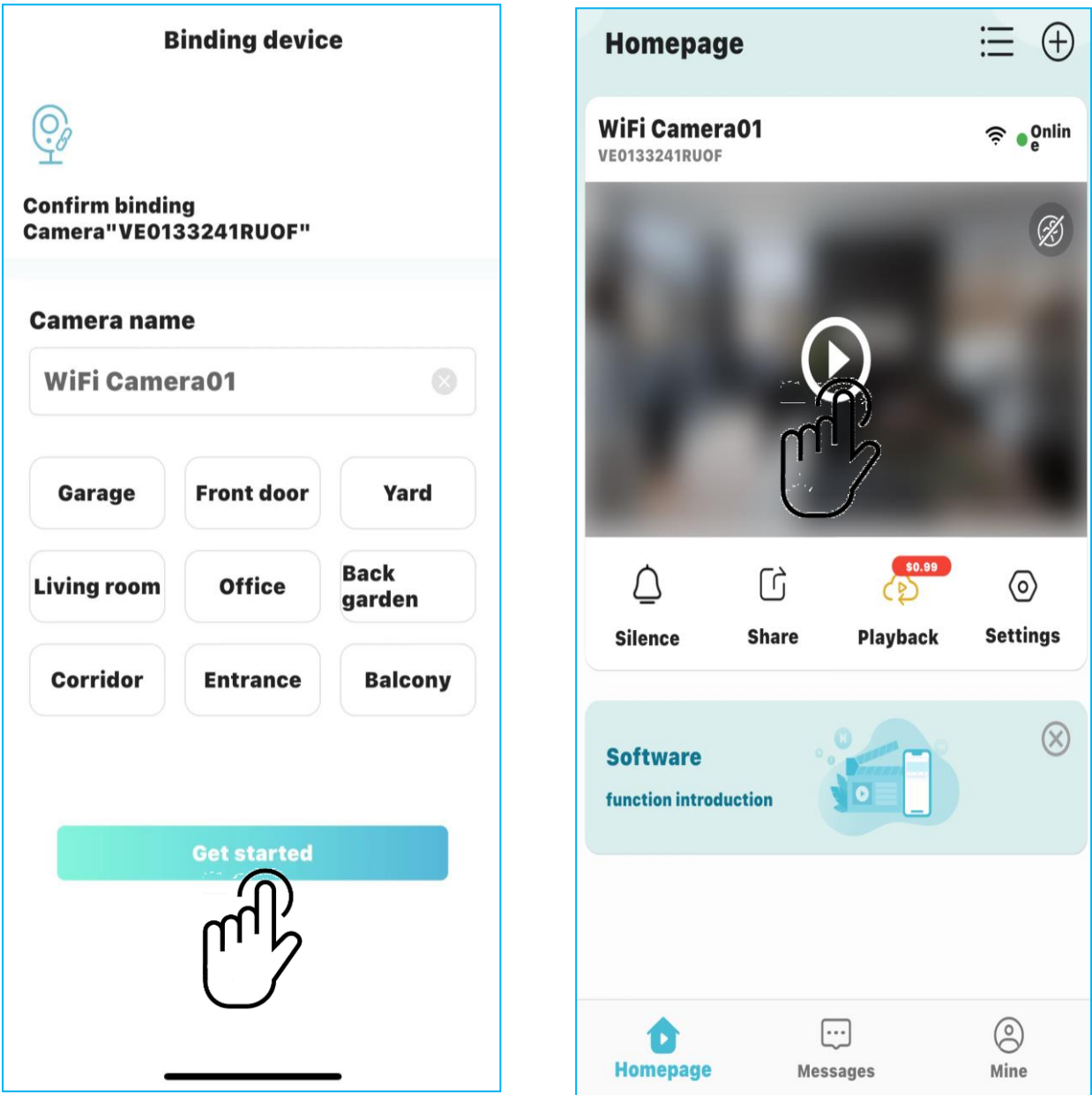
1) Plug in the power supply to power on the camera. Please wait for the self-check of the device to be completed, and the voice will broadcast "Please use APP for WiFi configuration". If not, please press and hold the reset button for 3-5 seconds to reset. Click the "+Add" button to scan the QR code on the camera.



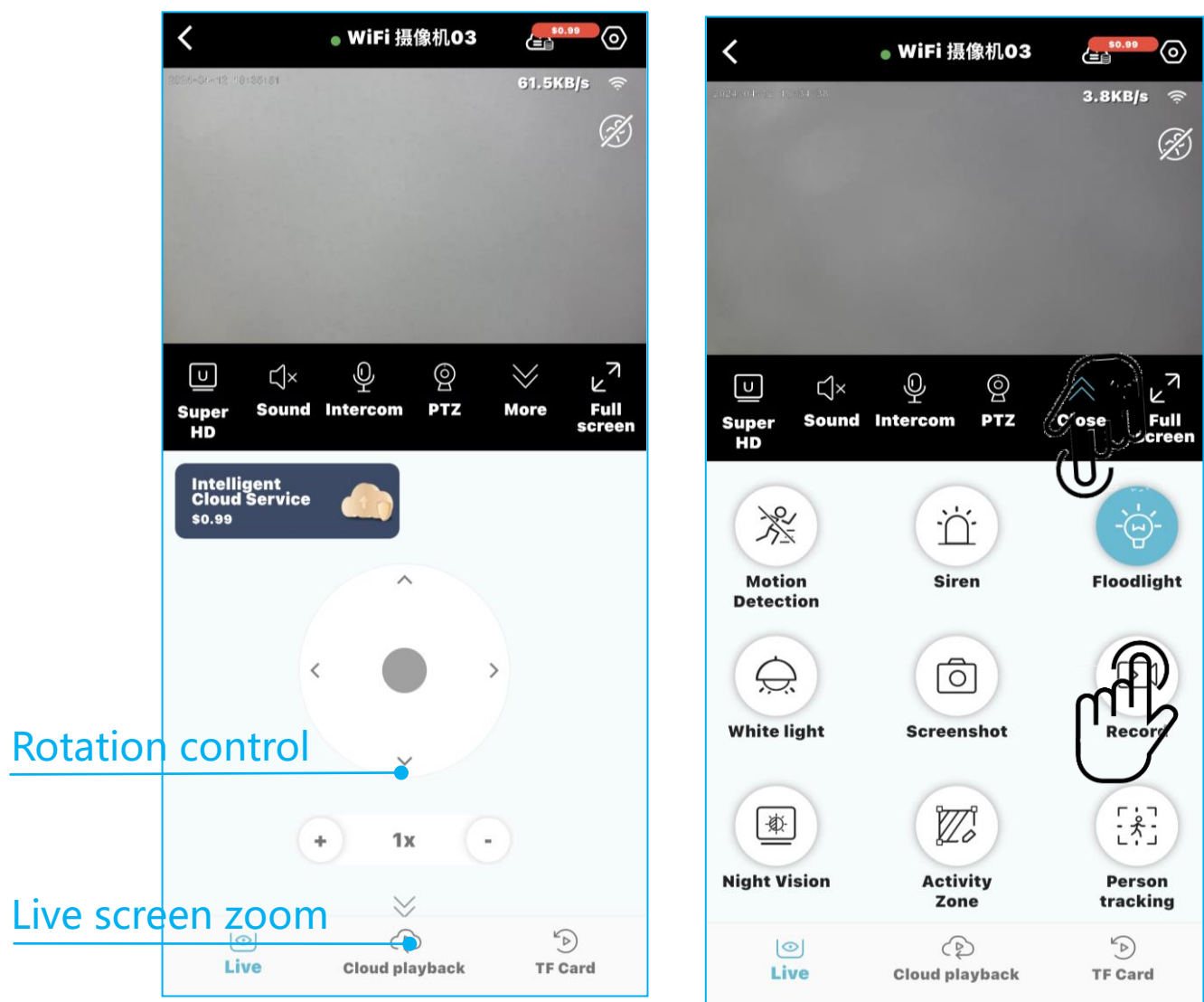
2) Enter the name and password of the Wi-Fi network you want the camera to connect to. To keep the connection of WiFi, please put the camera near the router. The camera supports 2.4Ghz networks. Please ensure that the account password entered is correct before click "Next" to generate a QR code for pairing the camera.



3) Aim the lens of the camera at the QR code to scan with a distance of about 15~30CM.The camera will makes a dripping sound to show that the code has been successfully scanned and pairing has started. Then click "Bind Now", and click Play to view the picture after adding successfully.



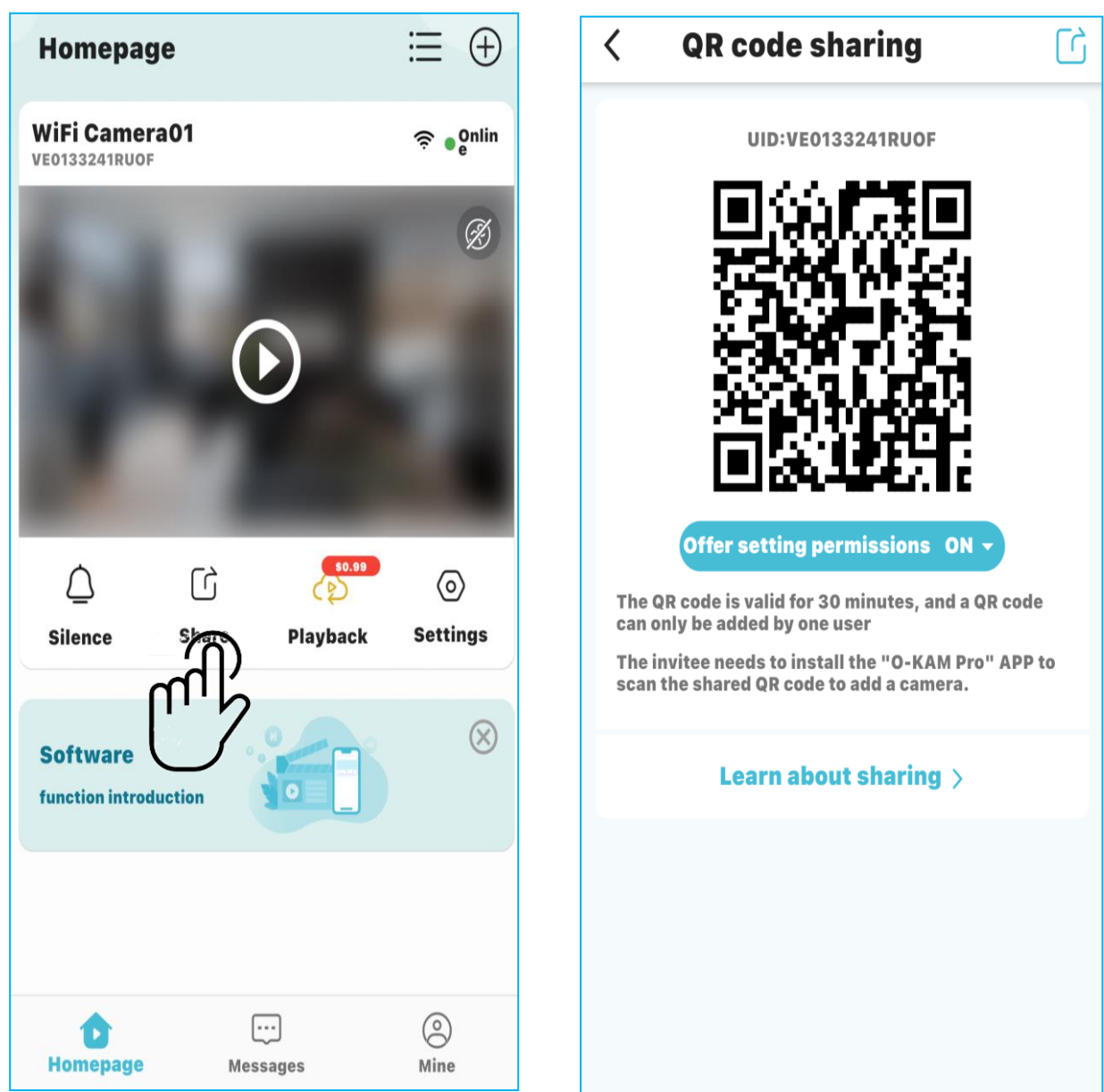
5.PTZ and lighting control



Light switch control: Turn on the function switch and find the "Floodlight" button.

6.Share the camera

Find the camera you want to share on the homepage of the APP or on the settings page. Click "Share" and generate a QR code, so that the members you want to share can scan with 'O-KAM Pro'. By sharing the opening authority, the sharer can set the function of the device; If the permission is turned off, the sharer can only watch videos, but can't set functions.



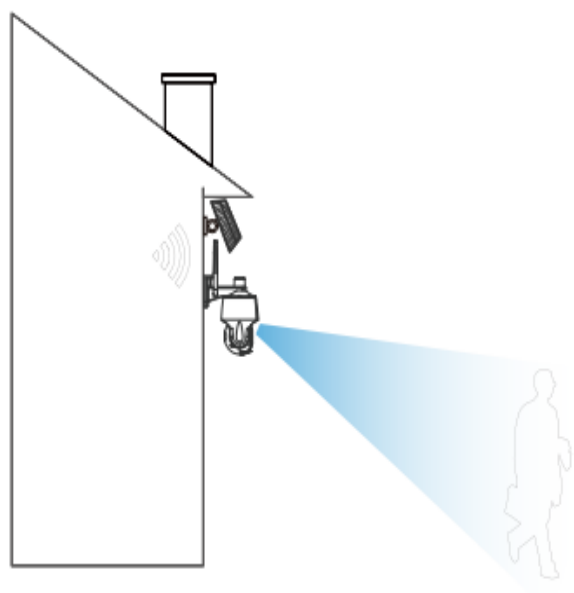
7. Product specifications

Type	Specification parameter
Visual angle	Diagonal angle 102
Video resolution	2K(2304*1296P/15fps) at most
storage medium	Support 128G Micro SD at most
Maximum power	5W
Power Supply	AC 110V~240V
Measure	75*75*169 (MM)

8. Installation guide

1) Choose a suitable location for installation.

Please install the camera in a place won't blocked the field of vision, and make sure that the location of camera has a good Wi-Fi signal.



9. Common problems and solution

Q1、 Unable to add camera for the first time.

A: Please make sure the camera is turned on and the self-check of camera is completed. And the camera will broadcast "Please use the App for Wi-Fi configuration" when the self-check complete.

- 1、 Make sure the account and password of Wi-Fi are correct.
- 2、 Please make sure the network is smooth when adding a camera.
And it is recommended to operate near the router.
- 3、 If it's failed to connect the WiFi with QR code, please try AP distribution network.

(After connecting to the WiFi hotspot sent by the camera by phone, return to the App and it will be added automatically);

Try to avoid setting the password too complicated, and it shouldn't contain special characters such as '\' .

- 4、 If using the two methods still couldn't match the network, please restart the router and try again.

Q2、 Can't recognize TF card?

A: After inserting the TF card into the TF card slot of the camera, check whether the capacity of the TF card will be displayed in the "System Settings"- "TF Card Video Settings" of the device in the APP. If "TF card not detected" is prompted, it means that TF card identification failed.

- 1、 Please use brand TF card.
- 2、 TF card can be recognized by computer normally.

3、 Only support FAT32 format.

4、 It is suggested that the capacity of TF card is between 2-128G.

Q3、 How to deal with equipment failure?

A: Please restart the power supply of the camera; If it still doesn't work, press and hold the reset button for 3-5 seconds to reset, delete the original camera and add it to the APP again.

FCC warning statements:

This equipment has been tested and found to comply with the limits for a Class B digital device, pursuant to part 15 of the FCC Rules. These limits are designed to provide reasonable protection against harmful interference in a residential installation. This equipment generates, uses and can radiate radio frequency energy and, if not installed and used in accordance with the instructions, may cause harmful interference to radio communications. However, there is no guarantee that interference will not occur in a particular installation. If this equipment does cause harmful interference to radio or television reception, which can be determined by turning the equipment off and on, the user is encouraged to try to correct the interference by one or more of the following measures:

- Reorient or relocate the receiving antenna.
- Increase the separation between the equipment and receiver.
- Connect the equipment into an outlet on a circuit different from that to which the receiver is connected.
- Consult the dealer or an experienced radio/TV technician for help.

Caution: Any changes or modifications to this device not explicitly approved by manufacturer could void your authority to operate this equipment.

This device complies with part 15 of the FCC Rules. Operation is subject to the following two conditions: (1) This device may not cause harmful interference, and (2) this device must accept any interference received, including interference that may cause undesired operation.

The device has been evaluated to meet general RF exposure requirement This equipment complies with FCC radiation exposure limits set forth for an uncontrolled environment.

This equipment should be installed and operated with minimum distance 20cm between the radiator & your body.