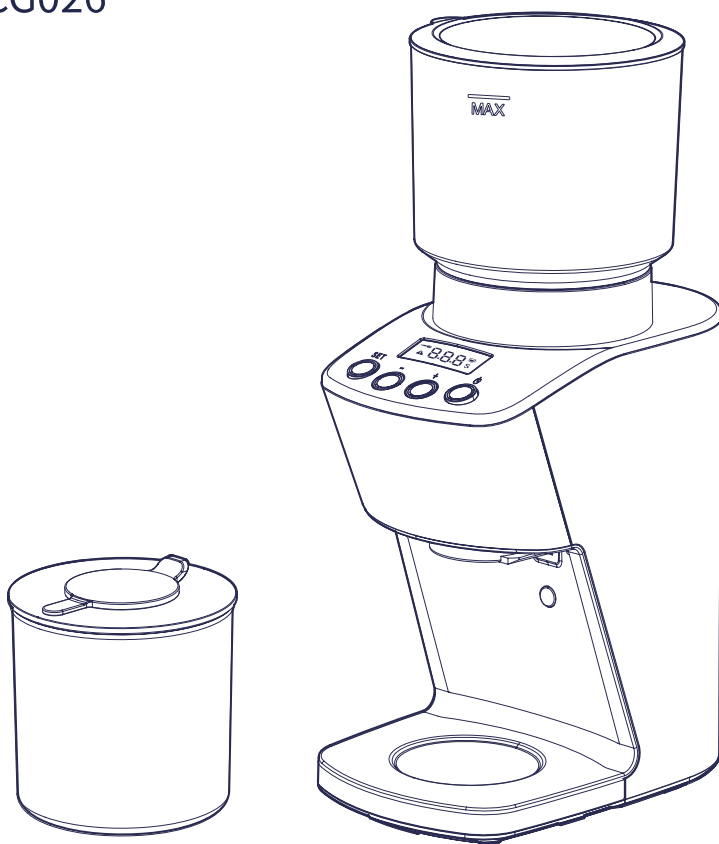


---

# STAINLESS STEEL CONICAL BURR COFFEE GRINDER

BD-CG026



USER MANUAL

---

# CONTENTS

■ Important Safeguards .....	1
■ Warning .....	2
■ Short Cord Instructions .....	2
■ Specification .....	3
■ About Gringding Coffee .....	3
■ Before First Use .....	3
■ Know Your Burr Grinder .....	4
■ How to Use the Coffee Grinder .....	5
■ Assemble and Disassemble the Bean Hopper ...	6
■ How to Using Portafilter Cradles .....	7
■ Grind Size Setting Recommendations .....	8
■ Control Panel Operation Instructions .....	8
■ Cleaning the Burr Grinder .....	11
■ Cleaning tips .....	12
■ Troubleshooting .....	13
■ Disposal .....	13

# IMPORTANT SAFEGUARDS

When using electrical appliances, basic safety precautions should always be followed:

1. Read all instructions.
2. To protect against fire, electric shock, and injury to persons, do not immerse cord, plugs, or the machine in water or other liquid.
3. Close supervision is necessary when any appliance is used by or near children.
4. Unplug from the outlet when not in use, before putting on or taking off parts, and before cleaning. To unplug, grasp the plug and pull it from the electrical outlet. Never pull the cord.
5. Avoid contact with moving parts.
6. To reduce the risk of severe injury to persons or damage to the appliance, keep hands and utensils out of the coffee bean hopper while grinding and when the appliance is plugged in.
7. Do not operate the grinder with a damaged cord or plug, or after the appliance malfunctions, is dropped, or damaged in any manner. In these cases, return the appliance to an approved service center for examination, repair, or electrical or mechanical adjustment.
8. The use of attachments not recommended or sold by the manufacturer may cause fire, electric shock, or injury.
9. Do not use outdoors.
10. Do not let the cord hang over the edge of a table or counter, or touch hot surfaces including the stove.
11. Check the coffee bean hopper for the presence of foreign objects before use.
12. Always operate the burr grinder with the lid securely in place.
13. Do not place on or near a hot gas or electric burner or in a heated oven.
14. Avoid contacting moving parts and do not attempt to defeat any safety interlock mechanisms.
15. This product has been designed for household use only. Any commercial use, inappropriate use, or failure to comply with the instructions will void the manufacturer's warranty.
16. This appliance is intended solely for grinding roasted coffee beans. Do not use the appliance for other intended purposes (such as hard seeds, spices, nuts, etc.).
17. Each appliance undergoes strict inspection during mass production and is tested with coffee beans for grinding, which may result in slight traces of use or residual coffee grounds.

18. All machines are subject to stringent quality control. Practical tests using randomly selected machines are conducted, which may explain any slight marks or coffee residue present prior to use.

# SAVE THESE INSTRUCTIONS

## Warning

This appliance is for household use only. Any servicing other than cleaning and user maintenance should be performed by the nearest authorized Service Center.

- Do not immerse appliance in water.
- To reduce the risk of fire or electric shock, do not dismantle the appliance. Repair should be done by an authorized Service Center only.

## Short Cord Instructions

### Regarding your Cord Set:

- A. A short power-supply cord is provided to reduce the risks resulting from entanglement or tripping over a longer cord.
- B. Extension cords should be used with caution.
- C. If an extension cord is used:
  1. The electrical rating of the extension cord should be at least as great as the electrical rating of the appliance.
  2. If the appliance is grounded, the extension cord should also be grounded.
  3. Ensure the longer cord is arranged so that it will not drape over the countertop or tabletop where it can be pulled by children or tripped over.

## Specification

Model	BD-CG026
Rated Power	165W
Rated Voltage	120V
Bean Hopper Capacity	12.35 ounces
Grinding Chamber Capacity	4.23 ounces
Dimension	7.9*5*13.7 inches

## About Grinding Coffee

The proper grind gives the most flavorful cup of coffee. The grind size and amount depend on the method by which the coffee is to be brewed. Generally, the finer the grind, the faster the coffee should be prepared. That's why coffee ground for espresso machine extraction is much finer than coffee intended for drip systems.

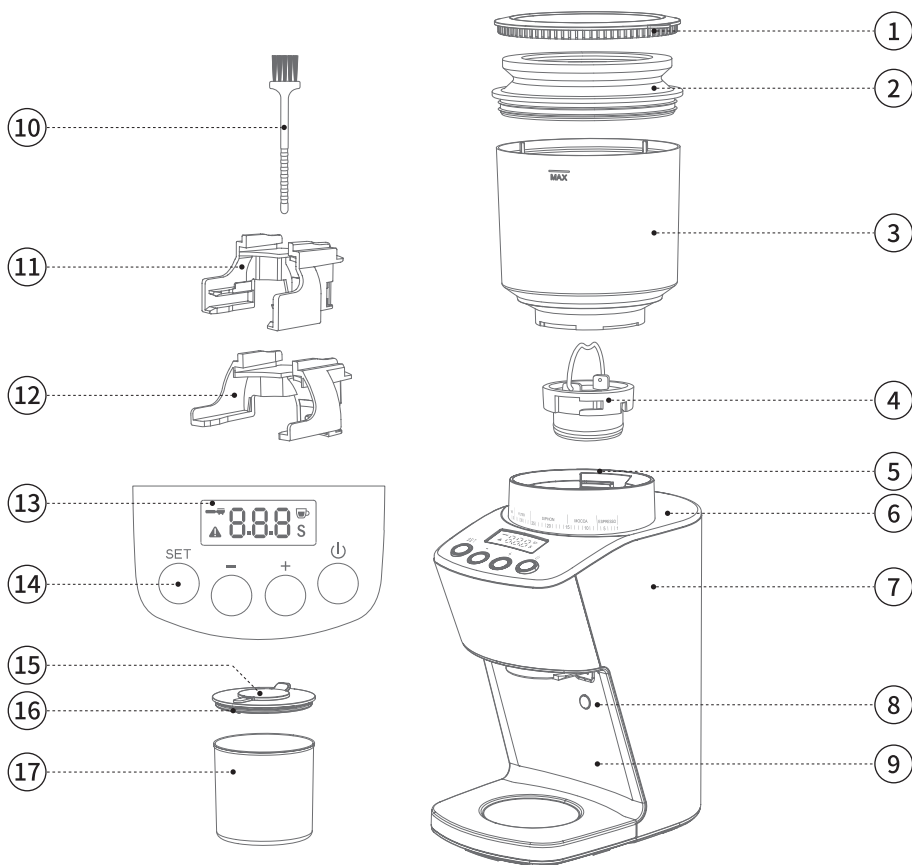
Coffee that is ground too finely for a specific brewing process (e.g., fine espresso grind used in a drip coffee machine) will result in over-extraction and bitter, pungent-tasting coffee. Conversely, coffee that is too coarse for a particular brewing method will result in under-extraction and weak, watery coffee. When the correct grind is used, adding more coffee simply makes the brew stronger without making it bitter.

In addition to offering a range of grind settings, coffee grinders provide consistent grinding. This is crucial to ensure uniform extraction across all coffee particles.

## Before First Use

Before using the coffee grinder, wash Bean Hopper, Cradles, Grinding Chamber, Grinding Chamber lid, and cleaning brush in warm soapy water and dry thoroughly. Wipe exterior of grinder with a soft damp cloth and dry thoroughly. Place grinder on flat level surface and plug power cord into **120V** outlet.

# Know Your Burr Grinder



① Bean Hopper Lid

③ Bean Hopper

⑤ Coarseness Adjustment Ring

⑦ Stainless Steel Housing

⑨ ABS Housing

⑪ 50-54mm Cradle

⑬ LED Display

⑮ Silicone Sealing Cover

⑰ Grounds Container

② Coffee Grounds Residual Cleaner

④ Stainless Steel Conical Burrs

⑥ Stainless Steel Top Cover

⑧ One-Touch Micro Switch

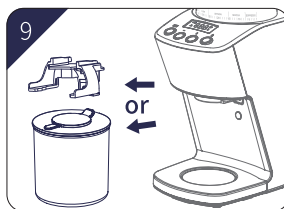
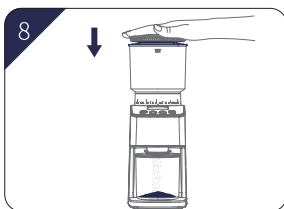
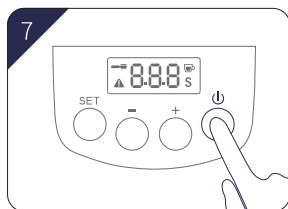
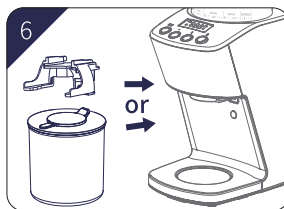
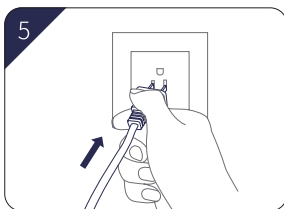
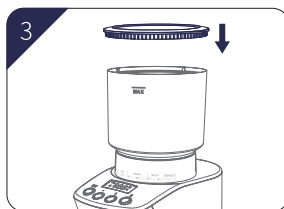
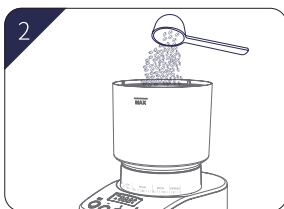
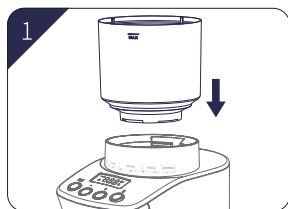
⑩ Cleaning Brush

⑫ 58mm Cradle

⑭ Functional Buttons

⑯ Grounds Container Lid

## How to Use the Coffee Grinder



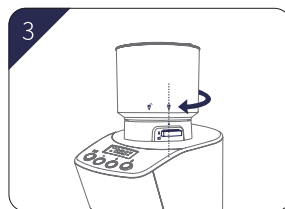
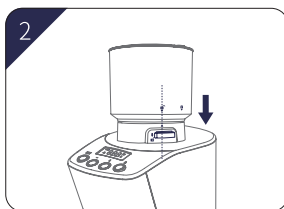
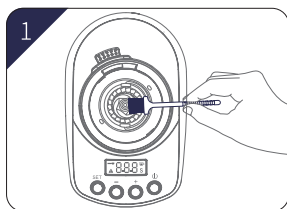
1. Assemble the Bean Hopper ( Refer to the "Assemble and Remove the Bean Hopper" ).
2. Fill coffee beans into Bean Hopper.
3. Close the lid.
4. Select your Grind Size  
The coffee grinder has 51 grind size options. ( Refer to the "Grind Size Setting Recommendations" ).
5. Plug into a power outlet.  
After the system is powered on, the buzzer beeps once, and the screen displays "888".
6. Place the Grinding Chamber or Cradle under the powder outlet.
7. Set the grinding time or the number of cups. (Refer to "Control Panel Operation Instructions"). Press the Start button to begin grinding.
8. Cleaning the coffee grinder after grinding. (Refer to "Cleaning the Burr Grinder").

### ENERGY SAVING FEATURE

The grinder will automatically switch off if not used for 3 minutes.

To reactivate the machine whilst in POWER SAVING/SLEEP MODE, press any button on the grinder control panel.

## Assemble and Disassemble the Bean Hopper

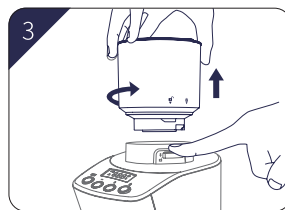
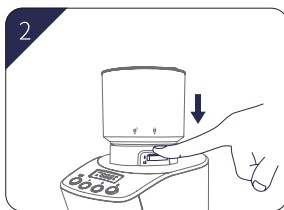
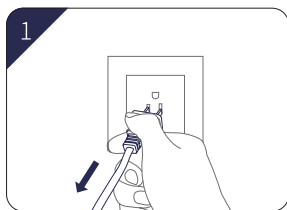


### How to assemble the Bean Hopper:

1. Make sure the top part of the conical burr is clear. If not, please use the brush provided to clean the top part of the burr.
2. Align the unlock icon (🔑) on the Bean Hopper with the arrow (▲) on the base.
3. Turn the Bean Hopper clockwise with your other hand until the lock icon (🔒) is aligned with the arrow (▲).

### NOTE:

If Bean Hopper has not been locked into position, the "E1" message will be displayed on the control panel disabling the operation of the grinder for safety.

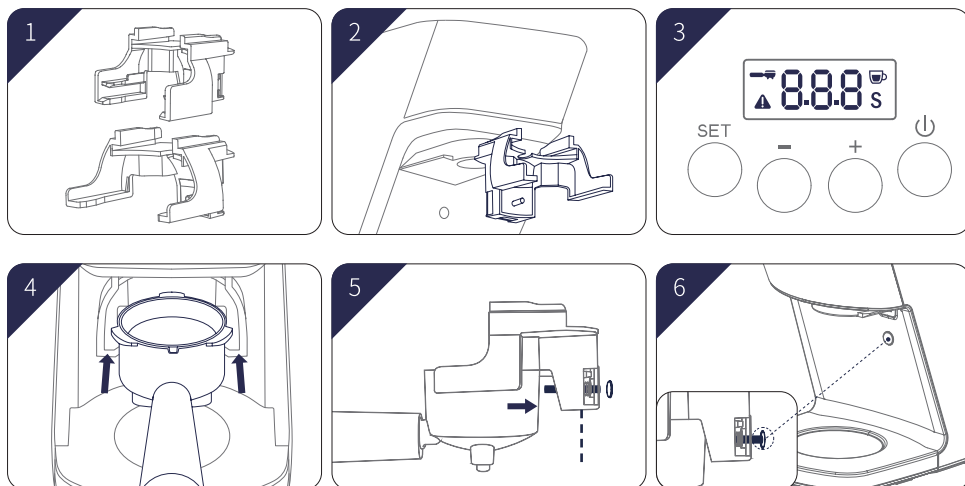


### How to disassemble the Bean Hopper:

1. Make sure the coffee grinder is unplugged.
2. Press the Bean Hopper release lever located opposite (🔑) the grinding size markings.
3. Turn the Bean Hopper counter-clockwise until the unlock icon aligns with the arrow (▲) and lift it up.



# How to Using Portafilter Cradles



## 1. Portafilter Cradle Options:

We provide two cradles to match your espresso machine handle.

Cradles suitable for **50-54mm** portafilters.

Place the 3-ear portafilter on top and the 2-ear one underneath. If needed, you can switch their positions.

Cradles suitable for **58mm** portafilters.

## 2. Installing the Cradle:

Insert the cradle until you hear a clear "Click" sound.

Correct installation activates Espresso Mode, indicated by the illuminated espresso icon and three lit buttons.

## 3. Attaching the Portafilter:

Align the portafilter with the corresponding slot on the lower end of the cradle.

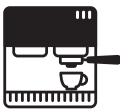





Slide the portafilter horizontally into position to ensure proper attachment.

## 4. Setting and Using the Grinder:

After setting the grinding time, press the start/stop button to activate the grinder. The grinder automatically stops once the set time has elapsed. To stop grinding early, press the start/stop button again.





## Grind Size Setting Recommendations

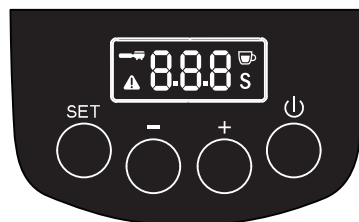
The coffee grinder has 51 grind size options. To adjust the grind size, rotate the coffee bean hopper and adjust from fine to coarse according to the type of coffee you want.

	Espresso	Mocca	Siphon	Filter	Pour Over	French Press
Coffee Type						
Grind Size	Fine	Medium Fine	Medium	Medium	Medium Coarse	Coarse
Grind Setting	1-7	8-15	16-26	27-34	35-43	44-51

## Control Panel Operation Instructions

### 1. Control panel instruction

-  - Setting button (switch the number of cups and time, and single cup grinding time settings)
-  - Time/Cup "-" button / reduce mode
-  - Time/Cup "+" button / incremental mode
-  - Start / stop button//Pulse mode



### 2. Operation Instructions

The amount of ground coffee is determined by the grinding time. The grinder automatically stops when the set total grinding time has elapsed. You can adjust the grinding time according to your preference. For this purpose, the appliance offers three operation modes: **Cup Mode, Time Mode, and Espresso Mode.**

## • Cup Mode

**Without** the portafilter cradle installed, Cup Mode activates with the cup icon illuminated and all **four** buttons lit. This mode is for grinding coffee into the grounds container.

1. Default settings: 1 cup and 4 seconds per cup.
2. Adjust the number of cups (1 to 12) using the "+" or "-" buttons.
3. To adjust the grinding time per cup (3 to 5 seconds), press and hold the "SET" button for about 1 second until the per cup grinding time starts flashing on the display. Use the "+" or "-" buttons to select your desired time. Short presses adjust the time by 0.1-second increments, while holding adjusts continuously.
4. The last set per cup grinding time is memorized, even after unplugging the appliance.

**Note:** In Cup mode, the total grinding time until automatic shut-off is determined via the number of cups multiplied by the grinding time per cup.

### **For example:**

Case 1: 1 cup and 4s pro cup, when setting 2 cups, the total grinding time is 8s.

Case 2: when setting 4.5s pro cup and 2cups, the total grinding time is 9s. After unplugged or plugged again, the pro cup keeps 4.5s as your last setting.

## • Time Mode

**Without** the portafilter cradle installed, switch from Cup mode to Time mode by **double-clicking** the "SET" button. Time mode activates with a default time of "10.0s" displayed, ideal for grinding directly into the coffee powder jar.

1. Adjust the timer duration (from 1 second to 60 seconds) using the "+" or "-" buttons. Short presses adjust the timer by 1-second increments, while holding the button down allows for continuous adjustment.
2. For times between 1 second and 15 seconds, adjustments are made in 0.1-second increments. For times between 16 seconds and 60 seconds, adjustments are in 1-second increments.
3. To switch back to Cup mode, simply double-click the "SET" button.

### **For example:**

**Case 1:** Default 10s, to decrease the time to 8s by pressing "-" button, it shows 9.9s, 9.8s, 9.7s, ..., 8.0s, then start grinding.

**Case 2:** Default 10s, to increase the time to 17s by pressing "+" button, it shows 10.1s, 10.2s, 10.3s, ..., 14.9s, **15.0s, 16.0s, 17.0s**, then start grinding.

### • Espresso mode

1. Install the provided portafilter cradle to grind directly into the portafilter. ( Refer to the "How to Using Portafilter Cradles " )
2. Ensure the portafilter is securely placed horizontally in the cradle for stability.
3. When the cradle is installed, Espresso Mode activates automatically. The espresso icon lights up, and **three** buttons are illuminated.
4. Default grinding time is set to 8 seconds. You can adjust the total grinding time (from 5 seconds to 20 seconds until automatic shut-off) by pressing the "+" or "-" buttons to achieve your desired amount.
5. For times between 5 second and 15 seconds, adjustments are made in 0.1-second increments. For times between 16 seconds and 20 seconds, adjustments are in 1-second increments.
6. To start grinding, insert the portafilter into the cradle; grinding starts automatically. Push the portafilter again to stop grinding—no need to press the "start/stop" button on the display. Alternatively, use the start/stop button to begin or stop grinding.

### • TIPS for Start/stop button

**Tip 1:** After setting the time or cup quantity, press the Start/Stop button once to start grinding. Press it again to stop grinding.

**Tip 2:** In Time Mode, press and hold the Start/Stop button to activate continuous grinding. The timer on the display will count up to a maximum of 60 seconds from 10 seconds. Release the button to stop grinding.

**Tip 3:** In Espresso Mode, press and hold the Start/Stop button to activate continuous grinding. The timer on the display will count up to a maximum of 20 seconds from 8 seconds. Release the button to stop grinding.

### • TIPS for the adjusting buttons "+" "-"

**Mute Function:** Hold down the "+" and "-" buttons simultaneously for approximately 2 seconds to turn off the button press sound. The display will show "OFF" to confirm the sound is muted.

**Restore Sound:** To turn the button press sound back on, hold down the "+" and "-" buttons together again. Your preferred sound setting will be retained even after unplugging the device.





## Cleaning the Burr Grinder

Regular cleaning is essential for ensuring consistent grinding results, especially for the burrs. It is important to clean the grinder at least once a month to prevent any coffee bean oil from getting stuck inside the grinding mechanism or on the surfaces, which can affect the performance and flavor of the ground coffee.



**Be careful when handling burrs as they are sharp. Never touch them with your fingers!**

1. Unplug the Coffee Grinder.
2. To unlock the Bean Hopper, simply press the lever located at the back of the Bean Hopper.
3. Remove the beans.
4. Securely lock the Bean Hopper in place.
5. Plug in the Coffee Grinder and run it until it is empty.
6. Unplug the grinder.

7. Replace the Bean Hopper Lid with the Coffee Grounds Residual Cleaner, and press it down. The air will expel any remaining ground coffee from the chute, effectively removing any leftover grounds.
8. Remove the Bean Hopper.
9. Turn the Upper Burr counterclockwise and gently pull it upward using the metal handle to remove it.
10. Use the cleaning brush to clean the Upper Burr.
11. Clean the Lower Burr using the cleaning brush.
12. Brush the grinder outlet.
13. Hold the metal handle of the Upper Burr and align it with the "Unlock" position.
14. Lock the Upper Burr securely by turning it clockwise using the metal handle. Place the handle in a flat position.
15. Align the unlock icon() on the Bean Hopper with the arrow() on the base.
16. Turn the Bean Hopper clockwise until the lock icon() is aligned with the arrow() on the base.



## Cleaning tips

- Always unplug the Coffee Grinder from the power outlet before cleaning.
- To clean the grinder of any remaining ground coffee, please use the Coffee Grounds Residual Cleaner after each use.
- To preserve the aroma of your coffee and prevent the degradation of the ground coffee, empty the Ground Coffee Container after each use.
- Never place the grinder, power supply cord, or plug in water or under running water.
- Do not use strong detergents or abrasive pads to clean the appliance.
- Clean the accessories in warm, soapy water.

**Important: Never immerse the base in water!**

**The parts of the Coffee Grinder are not dishwasher safe!**

## Troubleshooting

Code in display	Trouble description	Trouble solution
E1+ 	No bean hopper or bean hopper is not connected tightly.	Assembly the bean hopper or tighten the bean hopper until the micro switch is closed, once bean hopper is close then error code E1 in display disappears.
	Motor is overheating.	Unplug the power cord, waiting for it cooling down 10 minutes, then restart.
E2+ 	Total operating is 4 cycles, it power off automatically to protect the unit.	Unplug the power cord, waiting for it cooling down 10 minutes, then restart.
The Coffee Grinder suddenly stops working.	Coffee bean debris or oil is stuck in the grinder.	Cleaning the coffee grinder. (Refer to "Cleaning the Burr Grinder").

If your problem is not listed, you can contact us at [support@shardor1.com](mailto:support@shardor1.com).

## Disposal

This product should not be disposed of with other household wastes. To prevent possible harm to the environment or human health from uncontrollable waste disposal, it should be recycled responsibly.

Thank you for purchasing the **Coffee Grinder**