

# Airbrush Spray Booth



Read Carefully Before Use  
Keep for Future Reference

# Safety Information

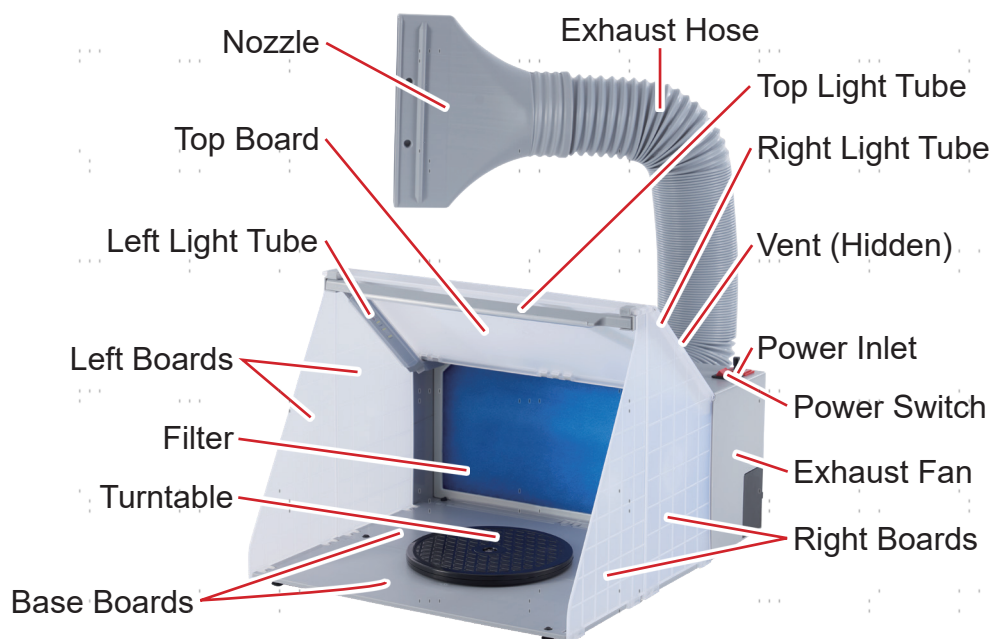
## Warning!

- **ONLY** assemble and use this device in accordance with these instructions and for its intended purpose. Do not allow unsupervised use by children, by anyone who has not read these instructions, or by any person whose mental or physical condition precludes safe use.
- **ALWAYS** keep your work area clean and well lit. Cluttered and dark areas invite accidents.
- Make sure your worksite is well ventilated. For work in confined spaces, **ALWAYS** connect this device to the outdoors using the exhaust hose and wear proper breathing protection such as a respirator to prevent accidental inhalation of carcinogenic paint particles or other debris. If becoming nauseous or disoriented, stop work, turn off this device and any other electrical appliances for your work, and leave the area. Also don appropriate hand protection during assembly and eye protection during work.
- **ONLY** place this device on even, stable, and nonslip surfaces. Never use this device in the presence of any flammable, explosive, or corrosive liquids, gases, or dust.
- **ONLY** use this device with stable and compatible power sources. Do not modify the power plug or move this device by pulling on its power cord. In case of power loss during operation, unplug this device **IMMEDIATELY** until power is restored.
- **DO NOT** allow any electrical components to become wet or operate this device with wet hands or in highly humid environments. If any electrical component becomes wet accidentally, disconnect this device from power and allow time for it to dry completely before further use.
- **DO NOT** leave this device unattended while it is in operation.
- **ALWAYS** disconnect this device from power before performing any inspection, cleaning, maintenance, or repair.
- **DO NOT** operate this device if it is damaged or shows signs of malfunction. Repair or replace problematic components before further use. Never replace any parts with nonidentical ones.

# Specifications

<b>Model</b>		<b>HS-E420DCLK</b>	
<b>Input Voltage and Frequency</b>		100–240 V~ 50/60 Hz	
<b>Rated Power</b>		25 W	
<b>Optimal Operational Temp. Range</b>		41–104°F	5–40°C
<b>Brightness</b>		1200 lm	
<b>Noise Level</b>		45 dB	
<b>Air Flow</b>		70.6 cfm	2 m <sup>3</sup> /min.
<b>Exhaust Velocity</b>		13 fps	4 m/s
<b>Exhaust Hose Length Range</b>		2.2–5.6 ft.	0.7–1.7 m
<b>Turntable Diameter</b>		7.5 in.	19 cm
<b>Dimensions</b>	<b>Folded</b>	16.5×5.9×9.8 in.	42×15×25 cm
	<b>Unfolded</b>	18.9×16.5×14.2 in.	48×42×36 cm
<b>Net Weight</b>		9 lb.	4.1 kg

# Product Diagram



## Package List



No.	Name	Qty.
A	Right Light Tube	1
B	Left Light Tube	1
C	Main Body	1
D	Top Light Tube	1
E	Nozzle	1
F	Hose Clamp	1
G	Power Cord	1
H	Sleeve	1
I	Exhaust Hose	1
J	Turntable	1
K	Hose Connector	1

**Not Included but Helpful:** Phillips Screwdriver

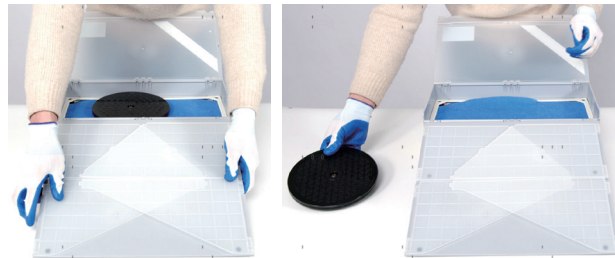
# Assembly

**!** Wear work gloves during assembly to avoid accidental injury.

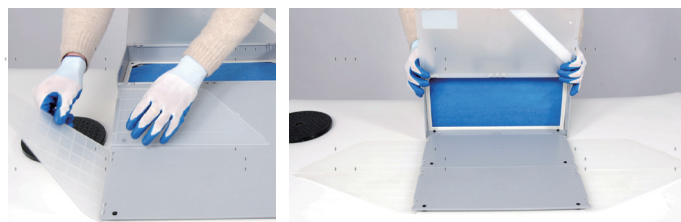
1. Lay the main body (C) of the device horizontally on a firm level surface, allowing its top board to face upward. Flip the rim of this board and open it as shown.



2. Unfold the double base boards completely and take out the turntable (J).



3. Unfold the left and right boards and lift the main body right side up as shown.



4. Connect these side boards to the top board by inserting their tabs into the slots as shown.

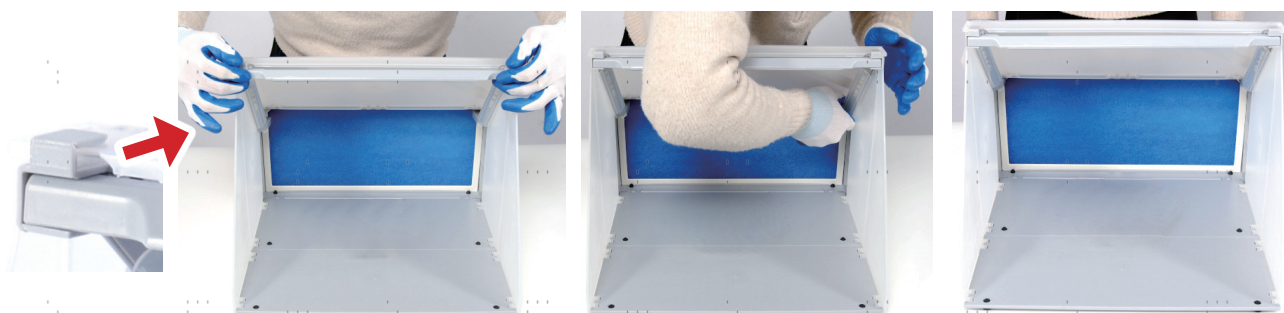




5. Insert the plug of the top light tube (D) into the socket of the right light tube (A), pressing until they lock to each other. Repeat this for the left light tube (B), creating an LED light frame.



6. Fit the light frame into the booth, securing it to the top board using the slots at both ends as shown. Insert the plugs of the left and right light tubes into the sockets beside the filter's top corners, pressing until they are locked into place.



7. Extend the exhaust hose (I) as needed. Attach the nozzle (E) and the sleeve (H) to the hose, screwing them into place.



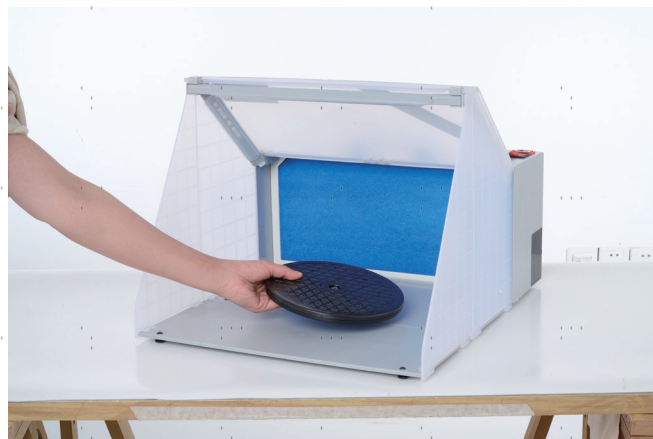
8. Attach the hose connector (K) to the sleeve and secure it using the provided clamp (F) as shown.



9. Place the hose connector over the vent at the back of the main body, allowing the vent's exterior frame to catch the slots on this connector as shown. Turn this connector until the exhaust hose locks to the vent's frame completely. Extend the hose as needed and place the nozzle on the other end to an appropriate location (out of a window if using this device indoors).



10. Set the turntable onto a convenient position on the base boards, usually the center of the dual base for best results.



11. Connect the power cord (G) to a stable compatible power source and the power inlet beside the power switch on the main body.



# Operation

1. Flip the power switch to **I**. The three LED lights should turn on and the exhaust fan should start working.



2. Place your workpiece onto the turntable. Paint its external surface using your airbrush in one hand and rotating the turntable with the other hand.



3. When finished, stop your airbrush and the turntable. Continue running the device for at least 2 minutes to allow the exhaust system to fully discharge the remaining airborne particles.
4. Flip the power switch to **O** to turn off the device's lights and fan.

# Maintenance

- Turn off and unplug this device between uses and before undertaking any inspection, cleaning, maintenance, or repair.
- After each use, remove the turntable, rinse away the remaining paint, and dry it completely with a soft cloth. Clean the boards, filter, and other external surfaces of this device with a soft damp cloth. Do not use harsh abrasives or caustic chemicals.
- Periodically check the exhaust system of this device for any obstructions, clearing the vent, exhaust hose, nozzle, etc. using a dry brush or other similar tools as needed. Also inspect the other components for any wear, breakage, or malfunction between uses, repairing or replacing any problematic parts before further use. Only use identical parts and always fully replace any damaged electrical connections.
- If this device will not be used for an extended period of time, unplug, clean, and fully dry it before storing in a cool dry location away from direct sunlight and inaccessible to children.



# Disposal



Electrical products should not be disposed of with household products. In the EU and UK, according to the European Directive 2012/19/EU for the disposal of electrical and electronic equipment and its implementation in national laws, used electrical products must be collected separately and disposed of at the collection points provided for this purpose. Locations in Australia, Canada, and the United States may have similar regulations. Contact your local authorities or dealer for disposal and recycling advice.

# Contact Us

Thank you for choosing our products! If you have any questions or comments, contact us at [help@cs-supportpro.com](mailto:help@cs-supportpro.com) and we'll resolve your issue ASAP!

For a .pdf copy of the latest version of these instructions, use the appropriate app on your smartphone to scan the QR code to the right.



PSB-E 42.0-US

PSB-E 42.0-UK

Rev. 8 May 2023