



ALL-IN-ONE RESIDENTIAL HEATING SYSTEM

The most complete solution for residential heating and domestic hot water

**VITODENS 222-F, B2TB**



**Compact & Efficient**

Space-saving, floor-standing unit with combined heat, on-demand DHW, and hot water storage.

## ALL-IN-ONE RESIDENTIAL HEATING SYSTEM

The most complete residential heating and hot water solution,  
combining a highly efficient boiler with 26.5 gallon on-demand  
DHW tank in a compact, single floor-standing unit.



Vitodens 222-F, B2TB combines a 95% efficient (AFUE) boiler with a 26.5 gallon on-demand DHW storage tank.

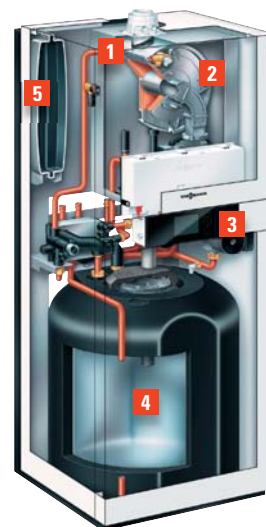
The Vitodens 222-F, B2TB is a high-efficiency space heating, DHW production and hot water storage system in one single-footprint unit. With a complete side-piping kit, the B2TB offers quick and easy installation, thanks to pre-installed pressure and temperature relief valves, a fully enclosed heating expansion tank, and built-in 3-speed DHW and space heating pump with diverter valve.

The Vitodens 222-F, B2TB is the most complete solution for residential heating and DHW, combining a highly efficient (95% AFUE) gas condensing boiler with integrated 26.5 gallon stainless steel DHW storage tank and instantaneous performance into one floor-standing unit.

Its unique, all-in-one design offers all the benefits of a boiler and standalone DHW tank, but requires only a small footprint and offers convenient installation. With rated input of 19-125 MBH (NG) and offering a 6 GPM DHW flow rate\* along with effective and efficient space heating, the B2TB is ideal for most residential applications.

\* For first 10 minutes/60 gallons. Then continuous draw of 3.3 GPM.

With zero side-clearance requirements, and its unique all-in-one design, the Vitodens 222-F, B2TB is perhaps the most compact and complete residential heating and hot water solution available on the market.

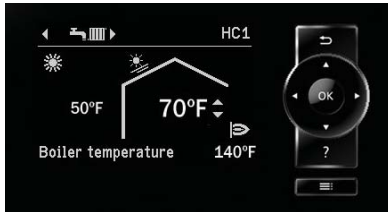


- 1 Inox-Radial heat exchanger
- 2 Modulating Matrix cylinder burner
- 3 Vitotronic 200 control with graphic user interface
- 4 Stainless steel storage tank
- 5 Heating expansion tank

**VITODENS 222-F, B2TB**

## VITODENS 222-F, B2TB

19-125 MBH



Vitotronic 200 control with Setup Wizard

### MatriX Cylinder Burner: The Heart Of Your Heating

The Viessmann-made modulating MatriX cylinder burner offers extremely clean combustion and quiet operation with either liquid propane gas or natural gas.

### Stainless Steel Inox-Radial Heat Exchanger: Efficient And Reliable

The Vitodens 222-F, B2TB is equipped with a stainless steel Inox-Radial heat exchanger. Developed and manufactured by Viessmann, this high-quality stainless steel component maximizes performance and reliability. Plus, the self-cleaning heat exchanger contributes to the boiler's long service life and dependable performance.



Inox-Radial Heat Exchanger

### Quality Guaranteed

Warranty information is available at:  
<https://www.viessmann.ca/en/services/warranties.html>

### BENEFITS AT A GLANCE

- + Combined boiler and DHW tank in a single, compact unit.
- + Ten-minute peak flow of up to 60 gallons, and continuous DHW draw of up to 3.3 GPM.
- + 26.5 gallon stainless steel storage tank with a limited lifetime warranty in residential applications.
- + Leveling feet for easy set-up in basement boiler rooms.
- + Zero clearance to combustibles
- + Vitodens 200 Series control with easy-to-use Startup Wizard
- + Consistent DHW delivery with reduced temperature fluctuation and cycle times.

### Award winning control unit

The intuitive Viessmann made Vitotronic 200, HO1B control manages the entire heating system and maintains economical performance and maximum comfort for your home at all times. The user-friendly, menu-driven control is capable of displaying multi-line text and graphics on a back-lit display 70% larger than those of comparable units. The high contrast, monochrome display offers excellent readability, even under poor lighting conditions.

You're always in control with the ViCare App. As part of Viessmann's Digital Solutions, ViCare allows you to remotely control your Vitodens 222-F, B2TB, anywhere from your smartphone or tablet (when used with Vitoconnect). Learn more at <https://www.viessmann.ca/en/services/viessmann-apps/vitoconnect.html>



Always be in control with Viessmann's Digital Solutions

### Low Lead Certification

Certified to CSA Low Lead Certification Program; including US Safe Water Drinking Act, NSF/ANSI 372 as well as other applicable US State requirements.



# Technical Information

## VITODENS 222-F

Viessmann Manufacturing  
Company Inc.  
Waterloo, ON Canada  
(800) 387-7373  
[viessmann.ca](http://viessmann.ca)

Viessmann Sales Office  
Langley, BC Canada  
(877) 853-3288

Model	B2TB	125
Min. Input	MBH	19
Max. Input	MBH	125
Max. Operating Pressure at 210°F	psig	45
Efficiency	% AFUE	95%
<b>Dimensions</b>		
Width	in.	23½
Height*	in.	64
Depth	in.	23½
<b>DHW Storage Tank</b>		
Capacity	USG	26.5
Max. Allowable Operating Pressure	psig	150
Continuous Draw Rate**	gpm	3.3
Max. Draw Rate** (over 10 min. period)	gal.	60
Weight (including installation fittings)	lbs.	302

\* Add 1½ in. when using the optional accessory seismic bracket kit.

\*\* Based on a temperature rise of 70 °F (50 °F to 120 °F).

### SPECIFICATIONS

- + Innovative DHW Storage Tank Loading System comprised of plate heat exchanger, DHW loading pump and storage tank
- + Fast heat-up with Storage Tank Loading System
- + Viessmann-made stainless steel MatriX cylinder burner with Lambda Pro combustion management system for continuous efficiency and low emissions
- + Input ranges from 19 to 125 MBH
- + Efficiency of 95% AFUE
- + Viessmann-made stainless steel DHW storage tank (26.5 USG)
- + Zero side clearance requirement
- + Pre-installed DHW pressure / temperature relief valves
- + Fully enclosed heating expansion tank and circulation pump
- + Built-in 3-speed DHW / space heating pump with diverter valve
- + Suitable for altitude levels up to 10,000 ft. / 3,000 m
- + 10-minute peak flow of 60 gallons
- + Continuous DHW draw of 3.3 GPM\*
- + Wide modulation ratio up to 6.5:1
- + Multiple venting options with vent length up to 180 ft.

\* Based on a temperature rise of 70 °F (50 °F to 120 °F).

