

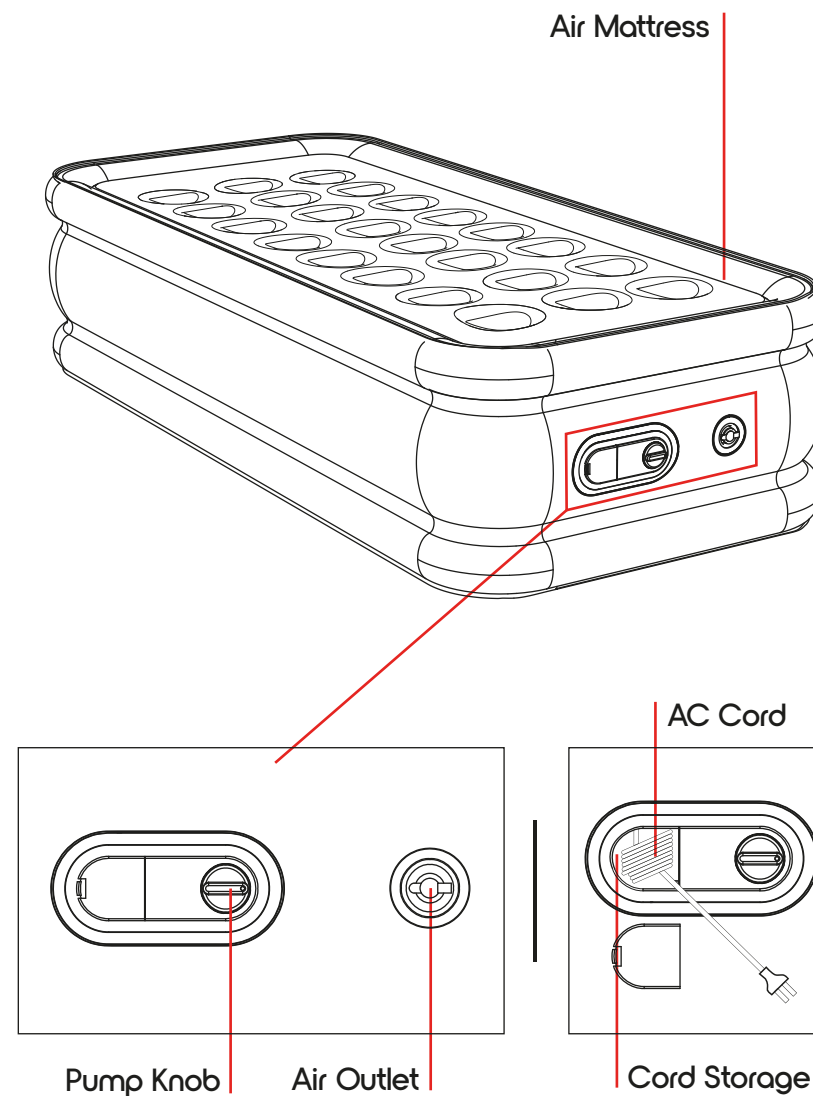
COZi

18" Twin Size Air Mattress



User Guide

Product Overview



Included In Your Package

- Air Mattress
- Travel Case
- Repair Kit
- User Guide

Using Your Air Mattress

Inflating:

1. Before each use, check your surroundings for any sharp objects on the ground/floor that may damage the mattress (e.g.: nails, screws, sharp rocks, etc.).
2. Unfold the Air Mattress and lay it on the floor.
3. Ensure that the Pump Knob is in the "OFF" position.
4. Open the Cord Storage and pull out the AC Cord, then connect the cord to an AC outlet.
5. Make sure the Air Outlet is plugged.
6. Rotate the Pump Knob clockwise to the "INFLATE" position.
7. When the Air Mattress reaches the desired firmness, rotate the Pump Knob back to the "OFF" position.
8. Unplug the AC Cord from the outlet and insert it into the Cord Storage.

Deflating:

1. Connect the AC Cord to an AC outlet.
2. Unplug the Air Outlet.
3. Rotate the Pump Knob counter-clockwise to the "DEFLATE" position.
4. Allow the Air Mattress to deflate fully, then turn the knob to the "OFF" position.
5. Unplug the AC Cord from the outlet and place it into the Cord Storage.
6. Fold the Air Mattress into the Travel Case.

Cleaning

1. Before cleaning the Air Mattress, ensure that the Pump Knob is in the "OFF" position and that the unit is unplugged.
2. Gently wipe the Air Mattress using a soft cloth dampened with soap and water.
3. Dry the mattress thoroughly.

Using the Repair Kit

In case of a cut, perforation or tear, you can use the included Repair Kit to patch up the Air Mattress:

1. Cut the patch to the designated hole size. Save the excess material for future repairs.
2. Peel the film off the patch and apply it to the hole. Smooth the area down with your fingers or a coin.
3. Wait 24 hours for the patch to fully dry before using the mattress.

Safety Instructions

- Do not let the mattress come in contact with pets or sharp objects that may puncture the material.
- Do not smoke while using the Air Mattress. Keep it away from open flames.
- Do not unfold or inflate the mattress in a cold environment, or in a location subject to extreme temperatures.
- Do not overinflate the mattress.
- Do not stand, walk, or jump on the mattress. Doing so may damage the unit.
- Do not let children play on or with the mattress. This product is not a toy.
- Do not place infants under 15 months of age on the mattress. There is a risk of suffocation. If used by children over 15 months of age, provide at least a shoulder width of space between the mattress and nearby walls or other objects to avoid entrapment.
- Always keep the mattress fully inflated when in use.
- This is not a lifesaving device. Do not use it as a flotation device.
- Store it in a cool, dry location, out of direct sunlight, when it is not in use.

Specifications

Material: PVC
Assembled Size: 78" x 35" x 18"
Max Weight: 250lbs.

Customer Support

If you have any questions about setting up this product, we are here to help. Call or email us, and an experienced customer support representative will be happy to assist you: **1-855-GO-TZUMI** or **support@tzumi.com**.

COZi

COZi 18" Air Mattress. Distributed by tzumi Inc. NY, NY, 10016. ©Copyright 2024 tzumi Inc. All Rights Reserved. Made in China. All other trademarks and trade names are the property of their respective owners. All pictures shown are for illustration purposes only. Actual product may vary due to product enhancement. Subject to change without prior notice.