



# Copenhagen LED gen2 large & mega

**BSS562LED170/830IIGL-DM50CLO-LS850SRTB**

Copenhagen LED gen2 large & mega, Urban road & street light,  
120 W, 13440 lm, 3000 K, CRI80, GPRS network, Distribution  
medium 50, Safety class II, IP66, SRG6-6

The original Copenhagen luminaire was co-designed with Copenhagen's Office of City Architecture in the 1960s with the aim of enhancing the aesthetic appeal of the city through lighting. This timeless luminaire design comes in two types: Copenhagen City LED Gen2 is for city and residential areas where light comfort is important; Copenhagen LED Gen2 delivers high performance for road lighting applications. The second generation of Copenhagen LED is available in a range of sizes, from mini to mega. This makes it suitable for any type of application while ensuring the dimensions of the luminaire and pole are well balanced, so every installation blends harmoniously into its surroundings. Various suspensions are available, allowing a variety of mounting options to provide maximum freedom during installation. Thanks to the built in LEDGINE-O engine, and the wide range of application-tailored optics, Copenhagen LED luminaires deliver the right amount of light and in the right direction on your street, enabling important energy savings. The luminaire is available with one or two Zhaga-D4i (ZD4i) System Ready (SR) sockets, which makes the luminaire future ready. This means Copenhagen LED Gen2 is ready to pair with advanced control and lighting software applications such as Interact, or sensors such as the Outdoor Sensor Bundle (OSB). And because the top SR socket is integrated into the canopy, it has no impact on the beautiful, clean design of the luminaire. Furthermore, every Copenhagen LED Gen2 BPS559, BRS561, BRS562 and BRS563 luminaire is uniquely identifiable, thanks to the Signify Service tag app. By simply scanning a QR code, placed inside the door of the mast or directly on the luminaire, you can instantly access the configuration of the luminaire. This makes maintenance and programming operations faster and easier and enables you to create a digital library of lighting assets and spare parts.

Copenhagen LED gen2 large & mega

Product data

General Information	
Lamp family code	LED170 [LED module 17000 lm]
Light source replaceable	Yes
Number of gear units	1 unit
Driver included	Yes
Light source engine type	LED
Service tag	Yes
Lighting Technology	LED
Value ladder	Specification
Serviceability class	Class A, luminaire is equipped with serviceable parts (when applicable): LED board, driver, control units, surge protection device, optics, front cover and mechanical parts
Warranty period	5 years
Sustainability rating	Lighting for circularity
Light Technical	
Upward light output ratio	0
Luminous Flux	13,440 lm
Correlated Color Temperature (Nom)	3000 K
Luminous Efficacy (rated) (Nom)	112 lm/W
Color rendering index (CRI)	80
Light source color	830 warm white
Luminaire light beam spread	-
Optic type outdoor	Distribution medium 50
Effective projected area	0.13 m²
Operating and Electrical	
Input Voltage	220/240 V
Line Frequency	50 to 60 Hz
Initial CLO power consumption	120 W
Average CLO power consumption	124 W
End CLO power consumption	126 W
Inrush current	53 A
Inrush time	0.3 ms
Power Consumption	120 W
Power Factor (Fraction)	0.97
Connection	-
Cable	Cable 10 m without plug
Number of products on MCB of 16 A type B	15
Protection class IEC	Safety class II
Surge Protection (Common/Differential)	Surge protection level until 6 kV differential mode and 6 kV common mode
Controls and Dimming	
Dimmable	Yes

Driver/power unit/transformer	Power supply unit with DALI and SystemReady interface and constant light output (integrated)
Control interface	GPRS network
Constant light output	Yes
Maximum dim level	50%
Embedded control	Constant light output
Mechanical and Housing	
Housing Material	Polyethylene
Reflector material	-
Optic material	Polymethyl methacrylate
Optical cover material	Glass
Fixation material	Aluminum
Housing Color	White
Mounting device	Suspension set simple, standard
Optical cover shape	Flat
Optical cover finish	Clear
Overall length	460 mm
Overall width	460 mm
Overall height	335 mm
Overall diameter	460 mm
Dimensions (Height x Width x Depth)	335 x 460 x 460 mm
Ingress protection code	IP66 [Dust penetration-protected, jet-proof]
Mech. impact protection code	IK07 [2 J reinforced]
Standard tilt angle posttop	0°
Standard tilt angle side entry	0°
Optical cover type	Flat glass
Net Weight (Piece)	8.100 kg
Approval and Application	
Flammability mark	-
CE mark	Yes
ENEC mark	ENEC mark
EU RoHS compliant	Yes
Performance ambient temperature Tq	25 °C
Remarks	* At extreme ambient temperatures the luminaire might automatically dim down to protect components
Ambient temperature range	-40 to +25 °C
Initial Performance (IEC Compliant)	
Luminous flux tolerance	+/-7%
Initial chromaticity	(0.4339, 0.4032) SDCM <5
Power consumption tolerance	+/-10%
Init. Color Rendering Index Tolerance	+/-2
Standard Deviation of Colour Matching (McAdam ellipse)	SDCM≤5

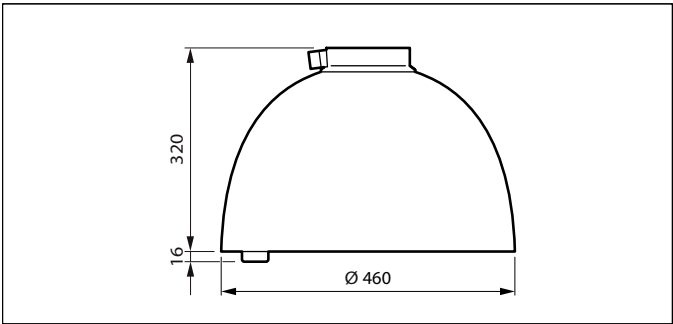
Copenhagen LED gen2 large & mega

Over Time Performance (IEC Compliant)	
Driver failure rate at 5000 h	0.01 %
Control gear failure rate at median useful life 100000 h	10 %
Lumen maintenance (EN-IEC 62722-2-1) at median useful life* 50000 h	L100
Lumen maintenance (EN-IEC 62722-2-1) at median useful life* 100000 h	L100

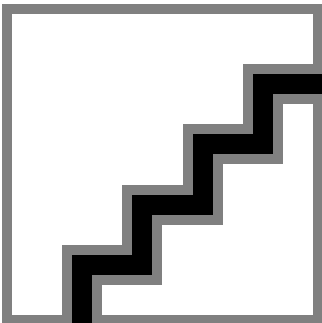
Product Data	
Order product name	BSS562LED170/830IIGL-DM50CLO-LS850SRTB

Full product name	BSS562LED170/830IIGL-DM50CLO-LS850SRTB
Full product code	871951409075000
Order code	919008634399
Material Nr. (12NC)	919008634399
Numerator - Quantity Per Pack	1
EAN/UPC - Product/Case	8719514090750
Numerator - Packs per outer box	1
EAN/UPC - Case	8719514090750
Product family code	BSS562 [Copenhagen gen2 LED Large]

Dimensional drawing



Photometric data



Polar Normal (separate) - BRS562I - 919008634399

## Copenhagen LED gen2 large & mega

