



Wall Backer Board Installation Guide

Wall Backer Board can be installed over wood and metal studded walls horizontally or vertically by using the Galvanized Screws & Washers. All vertical joints must be supported by suitable, load-bearing framing. Maximum spacing of studs is 16 inches on center.

STEP 1

Place screws & washers 12 inches apart vertically and 16 inches apart horizontally. It is best when applying the screws to create a slight depression in the board to reduce any buildup at the screw. Vertical seams must be staggered.

STEP 2

Seam Waterproofing - Method 1 (Seam Tape)

Cover all seams and screw/washer dents with thin-set and seam tape. Make sure all seams and screws/washers are fully covered with a minimum 2-inch overlap (approximately a 4.5" patch to cover washers). Use a grout float to remove any excess thin-set and air pockets.

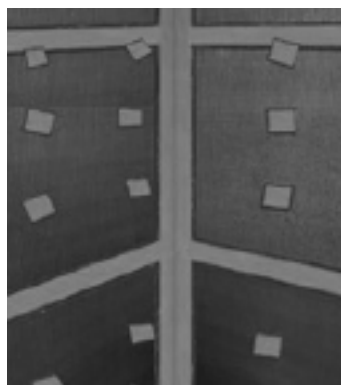
Seam Waterproofing - Method 2 (Joint Sealant)

Cover all seams and screw/washer dents with joint sealant adhesive. Flatten the excess adhesive with a spackle knife. Make sure all seams are fully covered for a watertight seal.

STEP 1



STEP 2



Method 1 (Seam Tape)



Method 2 (Joint Sealant)

MADE IN USA / HECHO EN EE.UU.
DISTRIBUTED BY: / DISTRIBUIDO POR:

HOME DEPOT
2455 PACES FERRY ROAD
ATLANTA, GA 30339
HOMEDEPOT.COM



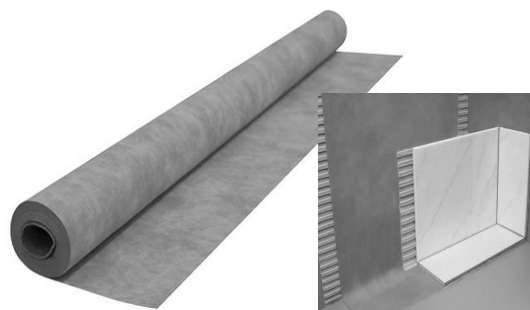
Waterproofing Accessories Installation Guide

SUBFLOOR PREP

The substrate must be clean, even, and load bearing. The thin-set mortar used for bonding the Waterproof Membrane must be appropriate for the substrate and it must penetrate and engage the Membrane's fleece. We recommend using a modified thin-set mortar to install the Membrane to a vertical substrate. Cut the Membrane to size prior to application.

STEP 1

Apply thin-set mortar to the substrate using a 1/4" x 3/16" (6 x 5 mm) V-notch trowel. Press the Membrane fully into the bond coat. Work the Membrane into the mortar by applying pressure to the Membrane with the flat side of the trowel (held at an angle) in smooth, diagonal sweeps. All air bubbles must be removed.

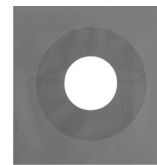
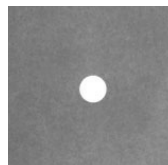
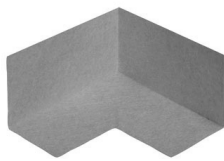
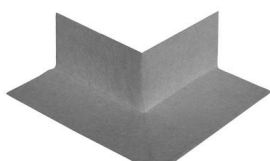


STEP 2

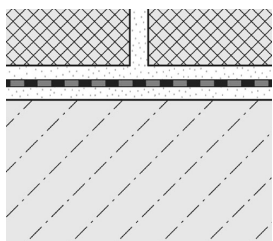
Seams can be constructed by overlapping the edges of the Membrane 2" (5 cm) using unmodified or modified thin-set mortar, or by abutting the edges and covering the joint with Seam Tape using an unmodified or modified thin-set mortar.

STEP 3

For inside and outside corners, adhere pre-formed Waterproof Inside and Outside Corners. For floor/wall connections, use Seam Tape. Install Pipe Collars at shower head, body sprays, etc. and Mixing Valve Collar at the mixing valve. As an alternative to the Pipe Collars and Mixing Valve Collars, other suitable sealants can be used to seal pipe protrusions and protect moisture sensitive solid backing panels at the mixing valve.



STEP 4



Once the entire membrane - with seams, corners, and connections - has been completely bonded, and therefore waterproofed, the tile/stone may be applied. **Note:** Water testing of the assembly

Prior to setting tile, wait 24 hours to allow for final set of the mortar before testing to ensure waterproof performance of the assembly at seams and connections.

Note: For tile installations using the thin-bed method, apply unmodified or modified thin-set mortar directly to the exposed Membrane surface and install the tiles, ensuring full coverage. For acid-resistant coverings, use an epoxy adhesive to set and grout the tile.

MADE IN USA / HECHO EN EE.UU.
DISTRIBUTED BY: / DISTRIBUIDO POR:

HOME DEPOT
2455 PACES FERRY ROAD
ATLANTA, GA 30339
HOMEDEPOT.COM