

IMPORTANT SAFETY INSTRUCTIONS
For Household Use Only

WHEN USING YOUR SHARK® STEAM MOP, BASIC SAFETY PRECAUTIONS SHOULD ALWAYS BE FOLLOWED, INCLUDING THE FOLLOWING:

READ ALL INSTRUCTIONS BEFORE USING YOUR STEAM MOP.

WARNING: DANGER OF SCALDING. The steam emitted from the Steam Mop is very hot and may cause scalding. Please use caution when using the Steam Mop.

WARNING: KEEP STEAM MOP AWAY FROM CHILDREN.

POLARIZED PLUG: This Steam Mop has a polarized plug (one blade is wider than the other). As a safety feature, the plug will fit into a polarized outlet only one way. If the plug does not fit fully into the outlet, reverse the plug. If it still does not fit, contact a qualified electrician. **DO NOT** attempt to defeat this safety feature.

WARNING: TO REDUCE THE RISK OF FIRE, ELECTRIC SHOCK OR INJURY:

- CAUTION:** When in use, NEVER turn the Steam Mop over or on its side. NEVER direct steam toward people, pets, or plants.
- Use the system only for its intended use.
- DO NOT** use outdoors.
- DO NOT** use for speed-dialing purposes.
- DO NOT** use the appliance as a heater. **ALWAYS** unplug the power cord from the electrical outlet when not in use and store carefully.
- DO NOT** allow mechanical damage by children. Close supervision is necessary when used near children, pets, or plants.
- Always be disconnected in the normal cleaning and charging recommended processes.
- DO NOT** use with damaged cord or plug. If Steam Mop is not working as intended or has been dropped or damaged, stop outdoors, or transport into water, return it to Shark® by Operating, LLC for repair, return or replacement. **DO NOT** attempt to repair or use of electrical work on it.
- To protect against electric shock, **DO NOT** immerse the Steam Mop into water or other liquids.
- DO NOT** handle plug or Steam Mop with wet hands or wet surfaces. Use without shoes.
- DO NOT** use if damaged by power cord, use power cord as hand, or use a cord on the power cord to pull the power cord. Avoid sharp edges or corners. Keep power cord away from hot surfaces.
- DO NOT** attempt pulling or power cord. Turn up against the plug at the power cord. **DO NOT** use extension cords or outlets with inadequate current carrying capacity.

- DO NOT** put any objects into opening. **DO NOT** use with a y opening bottle opener.
- DO NOT** put hands or feet under the Steam Mop. Unit gets very hot.
- Use **ONLY** on flat, smooth surfaces. **DO NOT** use on walls or other vertical surfaces.
- DO NOT** use on leather wax/police or high abrasion, synthetic leather or polished or lacquered, steam sensitive materials.
- DO NOT** use with any extension, adapter, power line, or any other device to the water tank. If the appliance as this may damage the unit or make it unsafe for use. If you live in a hard water area, we recommend using distilled water in your Steam Mop.

NEVER plug any power cord in an outlet with a warning marking for a so-called "overload" or "may damage your surfaces."

Caution: remove the power plug immediately after you have unplugged and closed the Steam Mop to cool.

When cleaning the Steam Mop, unplug the power cord from the electrical outlet and clean with a dry or damp cloth. **DO NOT** put water or any liquids on the mop head or tank.

Extreme caution should be exercised when using this appliance to clean stairs.

NEVER use the Steam Mop without the handle and wheel.

Keep your work area well lit.

Store the Steam Mop indoors in a cool, dry place.

To avoid circuit overload, **DO NOT** operate another appliance on the same socket (circuit) as the Steam Mop.

DO NOT leave your Steam Mop unplugged when it is connected to a power supply/electrical outlet.

ALWAYS unplug and allow the Steam Mop to cool before removing, changing, or servicing mop heads.

CAUTION: Your Steam Pocket Mop is designed to clean hard floor surfaces that will withstand high heat. **DO NOT** use on unsealed wood or unglazed ceramic floors. On surfaces that have been treated with wax or some unsealed floors, the steam may be removed by the heat and steam action. Test an isolated area of the surface to be cleaned before proceeding, and follow the use and care instructions from the floor manufacturer.

SAVE THESE INSTRUCTIONS

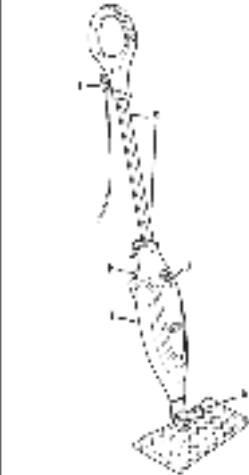
GETTING STARTED

When using your Steam Pocket Mop, you may find a few water stains around the water tank. This is because we test all our Steam Mops before shipping them, to give you a quality Shark Pro Steam Pocket Mop.



- a. Steam Mop Body
- b. Quick Release Cord Holder
- c. Quick Release Cord
- d. Water Tank Cap
- e. Water Tank
- f. Quick Release Cord Holder
- g. Water Tank Cap
- h. Water Tank
- i. Quick Release Cord Holder
- j. Water Tank Cap

*Phillips head or flat head screwdriver can be used to screw in the screws.



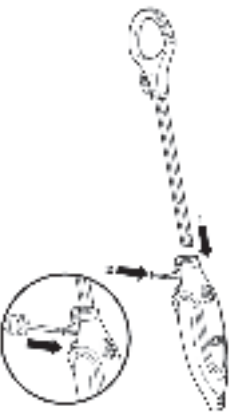
- g. Quick Release Cord Holder
- h. Quick Release Cord
- i. Water Tank Cap
- j. Water Tank
- k. Quick Release Cord Holder
- l. Water Tank Cap

Note: The Quick Guide shows the select accessories that are included with your model.

Accessory type and quantity may vary depending on the model. The image shown here is for illustrative purposes only and may be subject to change.

Illustrations may differ from actual product. We are constantly striving to improve our products; therefore the specifications contained herein are subject to change without notice.

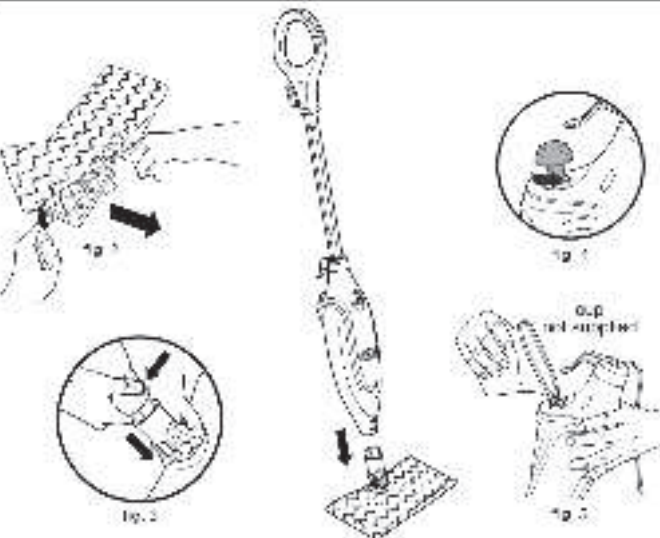
NOTE: For proper operation, please ensure that all parts are firmly pressed until CLICKED in place.



IMPORTANT! ALWAYS make sure the Shark Pro Steam Pocket Mop is **UNPLUGGED** from the wall outlet in use. **NEVER** let the mop attach the mop head, or change the mop head when the mop is plugged into the wall. To prevent the fire of your Steam Mop, we recommend using distilled water. Make sure you only add water to the tank. Chemical or cleaning solution may damage the appliance and could be unsafe for you and your family.

ASSEMBLY

- Insert the mop handle into the Steam Mop body. Be sure the cord hook is locked in place. The mop head is the handle is inserted past the line marked on the pole. Be sure the handle is locked with the indicated screw and tighten the lock head of the handle connector that is included (fig. 1).



- Use the lever on the side of the mop head to slide the mop head into place. Then secure the quick fasteners on the top of the mop head (fig. 2).
- Insert the mop handle into the mop body and lock it into place (fig. 3).
- Insert the water tank cap into the water tank and lock it into place (fig. 4). Use the filling tank to pour water into the tank. **DO NOT** overfill. Follow the cap on the water tank and turn it clockwise to secure it (fig. 5).

NOTE: To protect the life of your Steam Mop, we do not recommend hot tap water.

IMPORTANT! DO NOT use Steam Mop on unsealed wood or any other sensitive floors. On surfaces that have been treated with wax or some unsealed floors, the steam may be removed by the heat and steam action. Test an isolated area of the surface to be cleaned before proceeding, and follow the use and care instructions from the floor manufacturer.

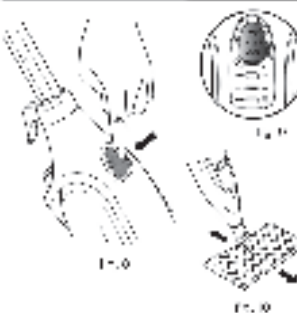
USING YOUR STEAM MOP



IMPORTANT! NEVER use the Steam Mop on a surface that is wet or has been treated with wax or some unsealed floors. The steam may be removed by the heat and steam action. Test an isolated area of the surface to be cleaned before proceeding, and follow the use and care instructions from the floor manufacturer.

Before cleaning, you should prepare the surface with your Steam Mop.

- At least the mop head should be cleaned before the power cord is completely plugged into the electrical outlet (fig. 6).
- When you plug the mop into the power cord, the mop will be on. To turn the mop off, unplug it from the electrical outlet (fig. 7).



SELECTING A STEAM SETTING

For each daily use, you should select a DUST setting. Press the power switch button once to select DUST (fig. 8). For normal everyday steam cleaning, press the steam control button again to select the HOT setting (fig. 9).

When you are using the mop for the first time, the mop will automatically turn on 20 seconds to start steaming.

To turn the steam on, press the steam control button. Refer to the Settings chart.

Change the steam with a forward and backward motion (fig. 10). To stop the steam, press the power switch button with 10 seconds.

The Shark Pro Steam Pocket Mop has two automatic settings so you can use the power automatically when you are cleaning your home. The table below shows when to use each setting.

SETTINGS	IDEAL FOR THESE SURFACES	RECOMMENDED USAGE
DUST	Carpet Bamboo Hardwood Marble	Light cleaning and drying
HOT	Hardwood Marble Tile Stone Laminate	Basic everyday steam cleaning Remove stains and odors Cleaning heavily soiled or heavily trafficked areas See figure 10 for details

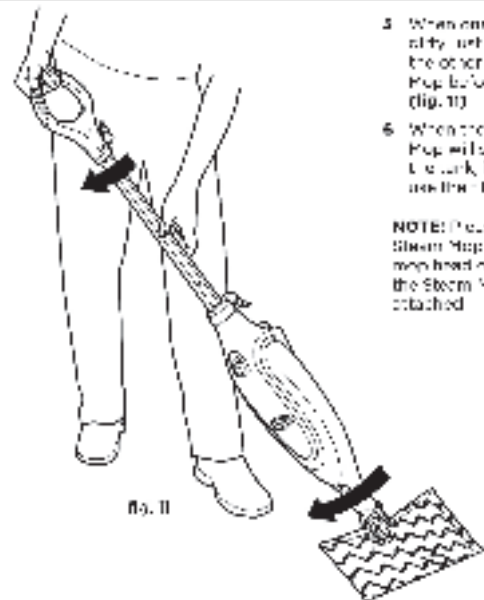
TO MAINTAIN WITH THE HOT, HOW DO YOU HEAD?

- For the first use, use the mop head to clean the floor.
- To use the mop head, use the long handle Steam Mop mop head.
- After the mop head is in place, press the steam control button to start steaming.
- After moving the mop head, press the steam control button to stop steaming and move the mop head.
- After moving the mop head, press the steam control button to stop steaming and move the mop head.
- Using a forward and backward motion, move the mop head and steam over the area to be cleaned.
- To stop the steam, press the power switch button.

IMPORTANT! DO NOT use the Steam Mop without using a hot mop head and adding water to the water tank. The mop head is not a hot mop head. The mop head is not a hot mop head.

IMPORTANT! DO NOT use the Steam Mop on a surface that has been treated with wax or some unsealed floors. The steam may be removed by the heat and steam action. Test an isolated area of the surface to be cleaned before proceeding, and follow the use and care instructions from the floor manufacturer.

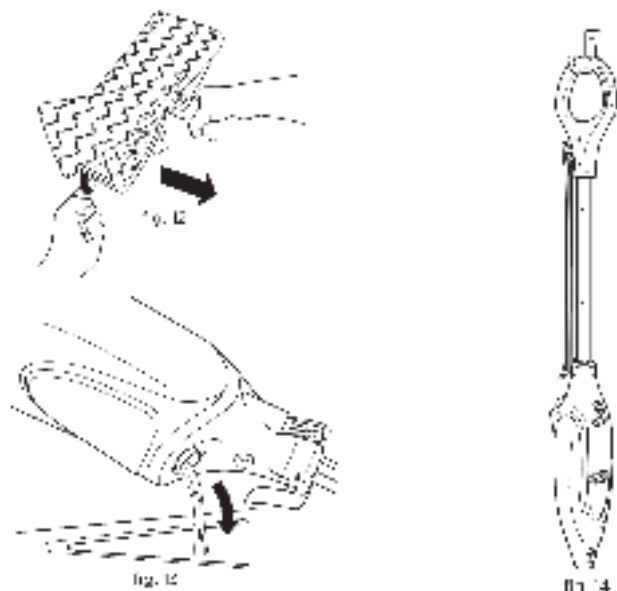
USING YOUR STEAM MOP - CONT'D



- When one side of the pocket pad gets dirty, just flip the mop head over to use the other side. **ALWAYS** unplug the Steam Mop before changing or removing pads. (Fig. 11)
- When the water tank is empty, the Steam Mop will stop producing steam. To refill the tank, just unplug the Steam Mop, then use the filling tube to refill the water tank.

NOTE: Please wait 2 to 3 minutes for the Steam Mop to cool down before removing the mop head or the pocket pad. **NEVER** touch the Steam Mop with the damp or wet pad attached.

CARE OF YOUR STEAM MOP



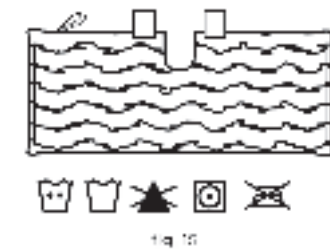
AFTER USE AND STORAGE

- When you have finished using the Steam Mop, stop the steam by pressing and holding the steam control button until the red flashes stop, unplug from the outlet, stand the mop upright, and let it cool for 2 to 3 minutes.
To reuse the pocket pad from the mop head (Fig. 12)
- All water must be removed from the tank before storage. Remove the cap and pour the remaining water out of the tank into a sink. Replace the cap on the water tank (Fig. 13)
- After the unit has cooled and all steam has been released, remove the mop head from the Steam Mop by hanging it from a hook on the wall. Check not included. (Fig. 14)

TECHNICAL SPECIFICATIONS

Voltage: 120V, 60Hz
Water Capacity: 500ml (16.9 oz.)

CARE OF YOUR STEAM MOP - CONT'D



CARE OF THE DIRT GRIP® PAD

- Wash and water the pad separately from other pads by using a pickling up lint. Only use liquid detergent (no powder detergent). **DO NOT** use any whitening or bleaching agents or dry or dry on a low oven setting. (Fig. 15)
- If there are loose threads on the pad, carefully pull the threads with scissors. **DO NOT** pull the threads out of the pad. (Fig. 15)



DECALCIFYING YOUR STEAM MOP

Over time, calcium and mineral deposits can build up and insulate the perforations of your Steam Mop. To extend the life of your product, we recommend that you use distilled water.

TROUBLESHOOTING GUIDE

PROBLEM	POSSIBLE REASONS & SOLUTIONS
The Pro Steam Pocket® Mop will not turn on.	Make sure the Steam Mop is securely plugged in to a working electrical outlet. Check the fuse or tripped. If your unit still does not work, Contact a Service Center.
The unit will not make steam.	Is there water in the water tank? First, add water, following the instructions. If you are using tap water, we recommend switching to distilled water.
Control select steam setting/flashing blue light remains on.	If you have already plugged in your unit, unplug and try a different outlet. This may reset the standby mode. Add water to the tank and press the steam control button to select a steam setting. If your unit still does not work, Contact a Service Center.
The Steam Mop leaves water on the floor.	Check to see if the cap is sealed through. We recommend unplugging the Steam Mop and changing the pad. Make sure the pocket pad is attached correctly.
The Steam Mop leaves white spots on the floor.	DO NOT leave the Steam Mop on the floor with a damp or wet pad attached. If you're using tap water, we recommend switching to distilled water. Make sure the cap is sealed on the water tank.
Floors are cloudy, streaky, or appear after steaming.	The pocket pad might be dirty. Flip or change the pocket pad. If you washed the pad with detergent, gently clean it up as damaged and reuse no steamers. You might have left the mop in the same spot for too long. If you have more water, try switching to distilled water. This residue may be left over from previous cleaning. Use the Steam Mop a few more times to remove the residue. In the steam network, water vapor through the floor with water lifting. Then, when steam mopping again with a clean pocket pad. One or more times generally removes the residue. A more stubborn case may require you to mop the floor with a mix of one part detergent and two parts water.
The Steam Mop is hard to push.	Make sure the pocket pad is attached correctly. Replace the pad if it is time.

NOTE: In order to ensure the highest possible standard for refurbished items, all units are thoroughly inspected as part of the process.
For this item, water may be used during the refurbishing process and so; you may notice some condensation in the water reservoir.
It is recommended to rinse the water reservoir with fresh water prior to its first use.

ACCESSORIES

NOTE: Not all accessories come with all units. For a list of the accessories included with this item, see the top inside flap of this book.

ACCESSORY	
Triangle Mop Head Ideal for cleaning corners and other hard-to-reach areas.	
Rectangle Mop Head For general all-purpose steam cleaning.	
Triangle Steam Pocket® Dirt Grip® Washable Pad Double-sided triangle-shaped pad for cleaning corners and other hard-to-reach areas. Featuring Dirt Grip technology for removing moisture, dirt and tough, stuck-on stains.	
Rectangle Steam Pocket® Dirt Grip® Washable Pad Double-sided rectangle-shaped pad for cleaning corners and other hard-to-reach areas. Featuring Dirt Grip technology for removing moisture, dirt and tough, stuck-on stains.	

PLEASE READ CAREFULLY AND KEEP FOR FUTURE REFERENCE.
This Owner's Guide is designed to help you get a complete understanding of your new Shark® Pro Steam Pocket® Mop.
SharkNinja Operating LLC
Illustrations may differ from actual product. We are constantly striving to improve our products; therefore the specifications contained herein are subject to change without notice.
For SharkNinja U.S. Patent information, visit sharkninja.com/USPatents

