

LED TRAFFIC LIGHT AND MOUNTING KITS

DoorKing Part Numbers

1603-221

6 Ft Cable/No Post

1603-222

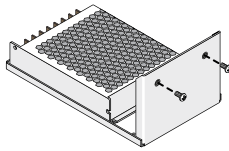
6 Ft Cable/35" Post

1603-223

11 Ft Cable/95" Post

These kits are designed for the 1600 model barrier gate operators. Recommended for the 1603 auto spike system. The traffic signal is synchronized with the gate operator's up/down cycle. The red LED light stays on and only changes to the green LED when the operator's arm is fully raised.

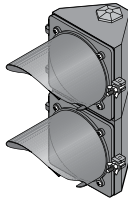
Kits Include:



12 VDC Power Supply,
Mounting Bracket with
Mounting Screws
and Labeled Wires



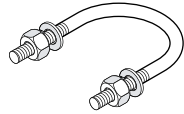
6 or 11 Ft
Traffic
Light Cable



Traffic Light
Assembly

Support Post Hardware:

Kit P/Ns 1603-222 & 1603-223 **ONLY**



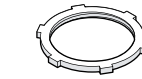
U-Bolt Clamp with
lockwashers and nuts
(2 sets)



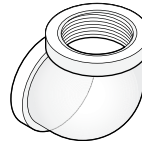
3/4" Conduit Nipple
and Conduit Nut



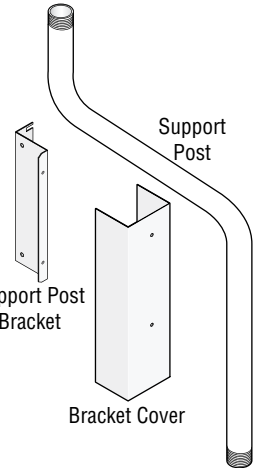
5/8" Cover Bracket
bolt and lockwasher
(2 sets)



2" Conduit Nut (3)



2" Threaded
Elbow



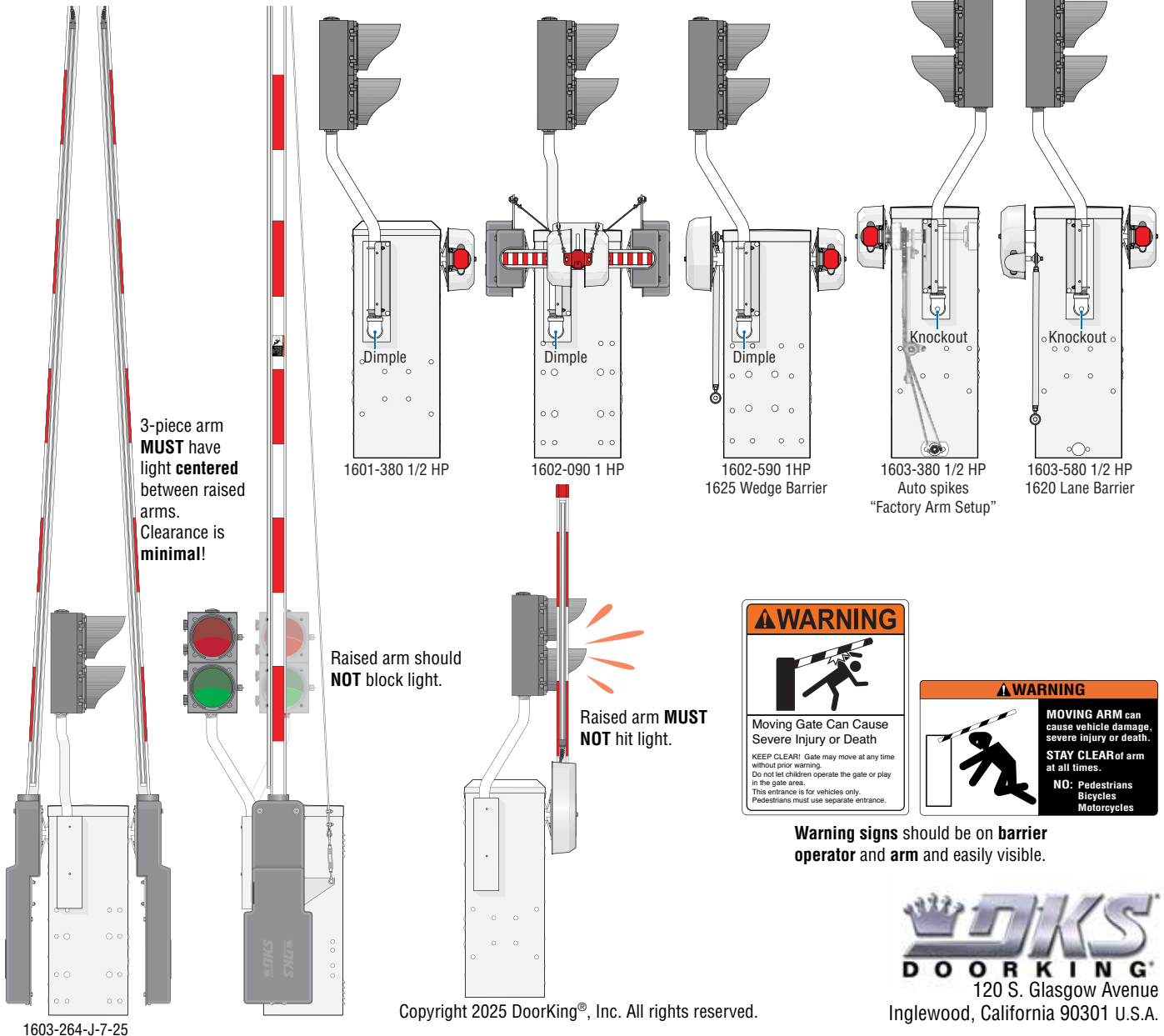
Support
Post

Support Post
Bracket

Bracket Cover

DOs and DON'Ts

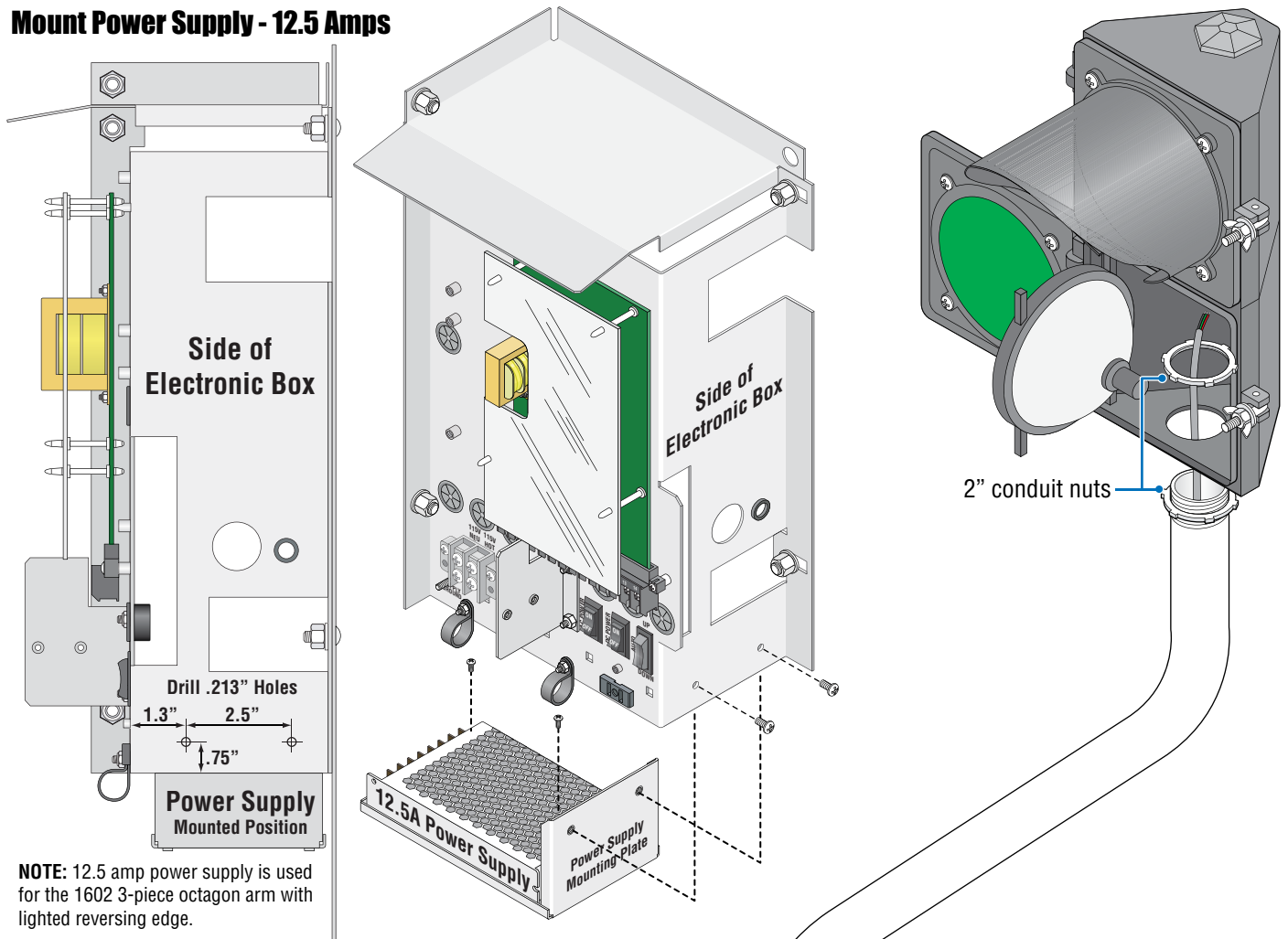
Different Model Installations



DOORKING
120 S. Glasgow Avenue
Inglewood, California 90301 U.S.A.

Copyright 2025 DoorKing®, Inc. All rights reserved.

Mount Power Supply - 12.5 Amps



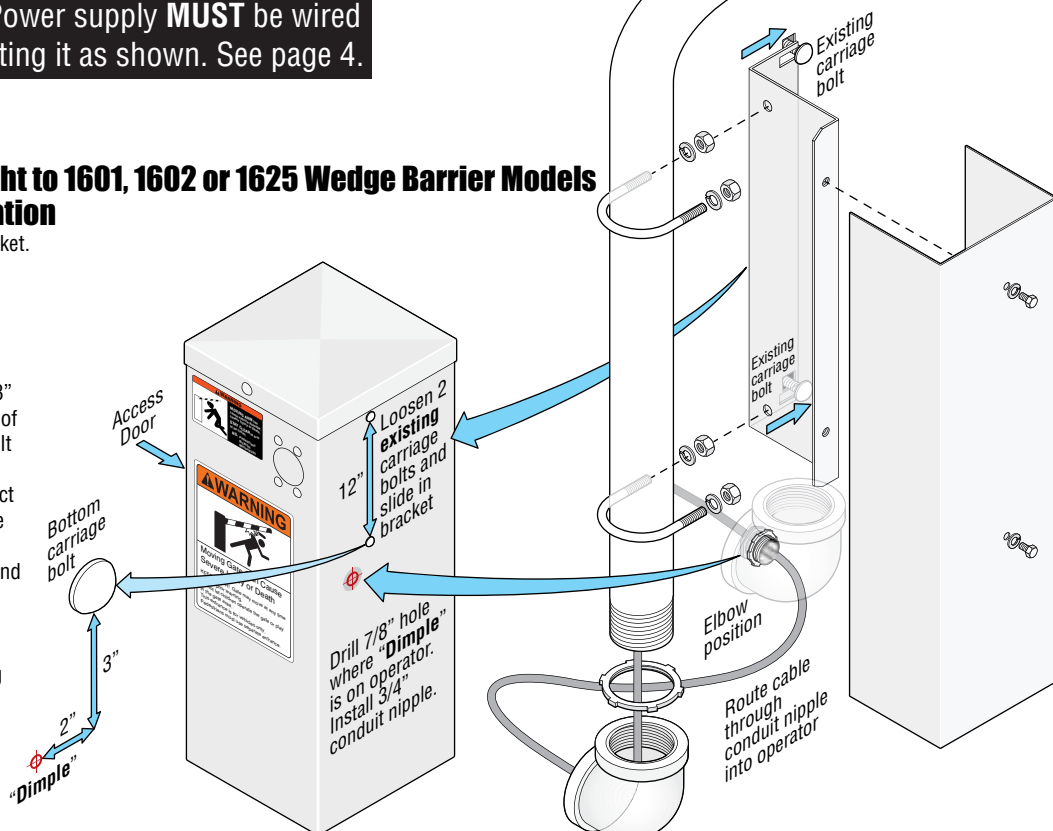
IMPORTANT: Power supply **MUST** be wired **BEFORE** mounting it as shown. See page 4.

Mount Traffic Light to 1601, 1602 or 1625 Wedge Barrier Models "Dimple" Installation

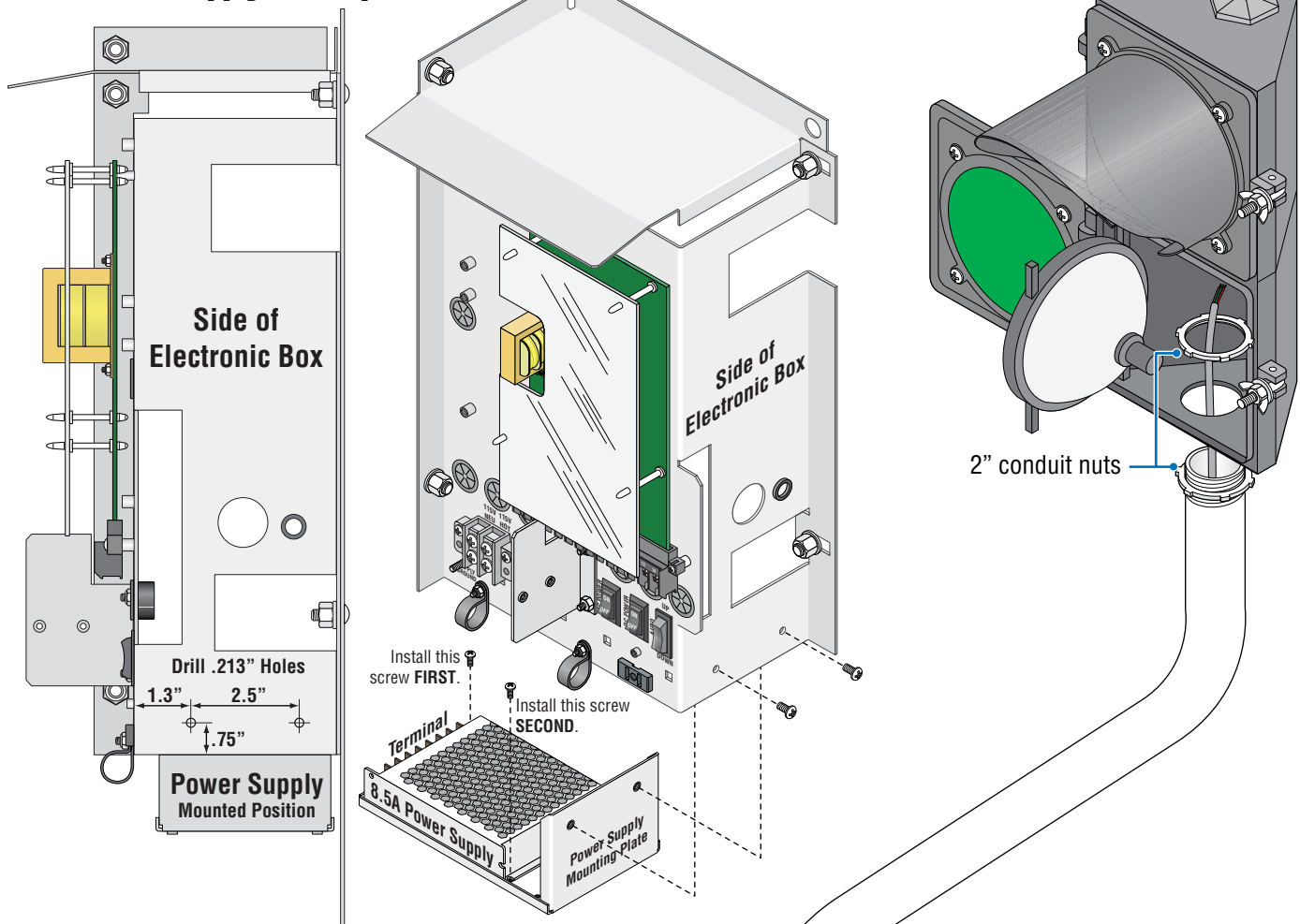
Post on **LEFT** side of bracket.

The "Dimple" is located 3" down and 2" to the **LEFT** of the bottom carriage bolt. It allows the 7/8" drill bit to start the hole in the correct position. Elbow should be **centered** on hole after inserting conduit nipple and running cable through it.

TIP: Make sure all metal shavings from the drilling don't get into **ANY** of the electronic components which could cause the operator to malfunction.



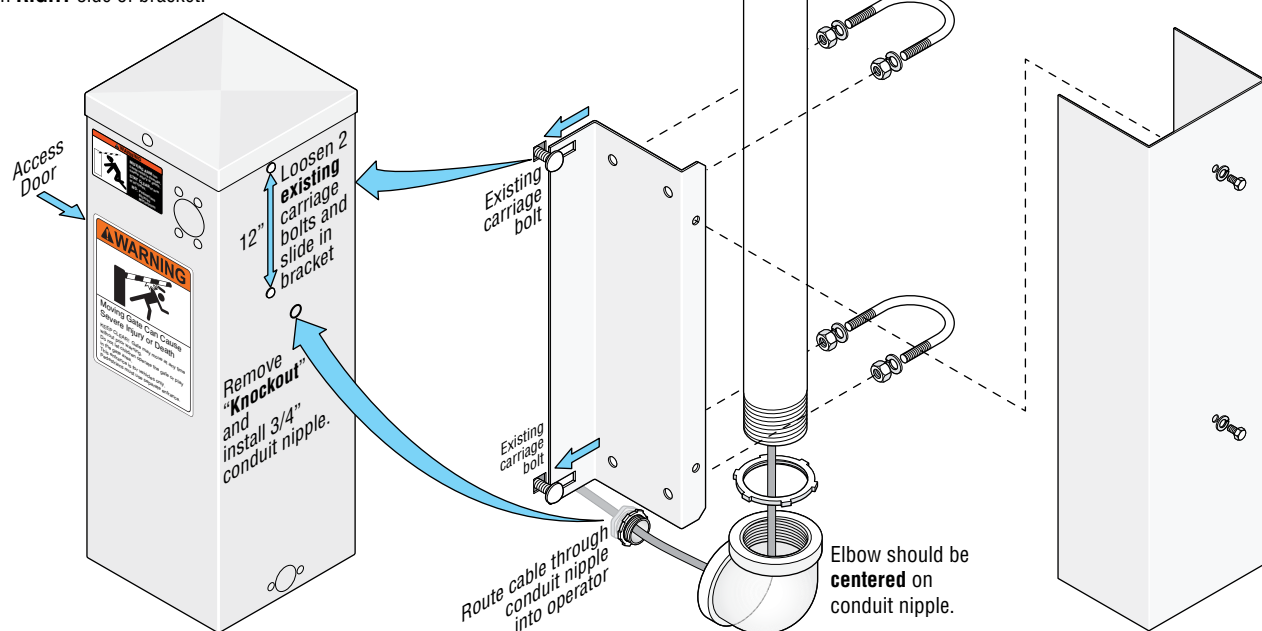
Mount Power Supply - 8.5 Amps



IMPORTANT: Power supply **MUST** be wired **BEFORE** mounting it as shown. See next page.

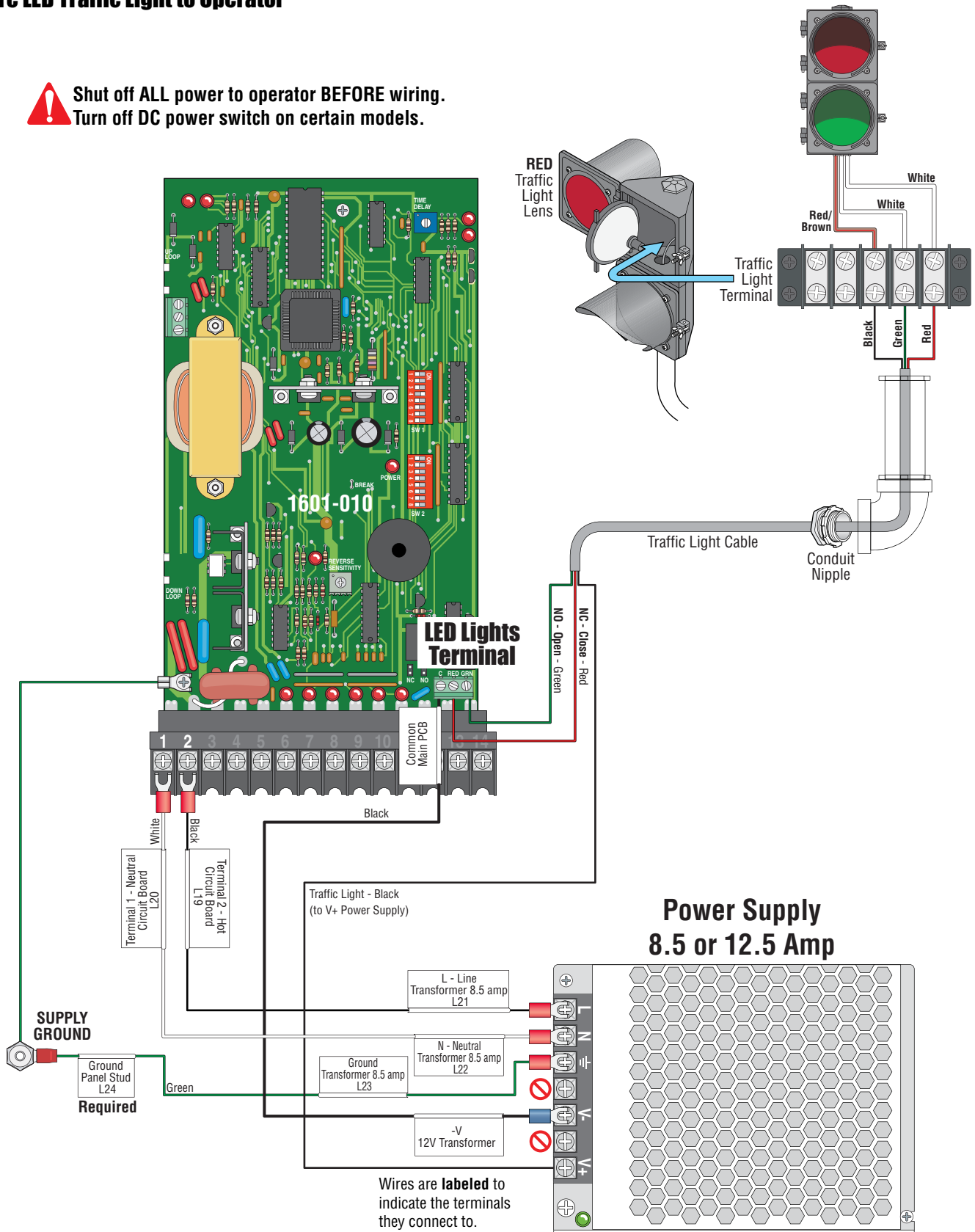
Mount Traffic Light to 1603 or 1620 Lane Barrier Models "Knockout" Installation

Post on **RIGHT** side of bracket.



Wire LED Traffic Light to Operator

**⚠ Shut off ALL power to operator BEFORE wiring.
Turn off DC power switch on certain models.**



⚠ Keep wires clear of all moving parts.