

Aideepen 50W + 50W TDA7492P Amplifier Board

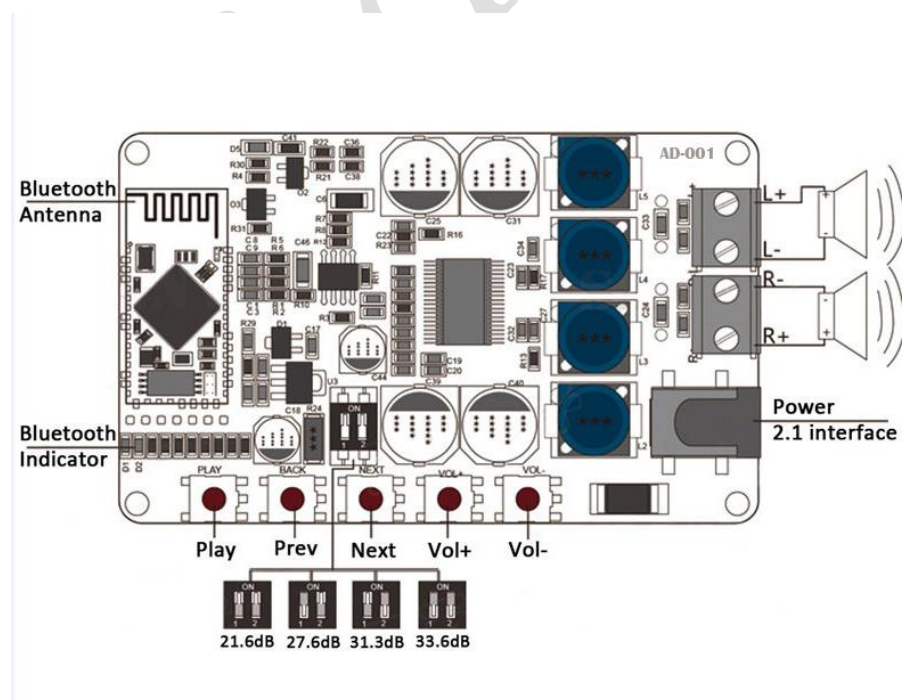
---Parameters:

1. Power Supply: 2.1 interface DC 8 ~ 25V power supply. It will work during the range.
2. Suitable Adapter: 5.5mm*2.1mm
3. Output impedance: 8 ohm best (can drive 4,6,8,16 ohm impedance speaker)The best speaker is 8 ohm

---How to Pair:

1. First, you need to check voltage whether the voltage is during DC 8-25V power supply. 12V is the best.
2. After charging and booting, the section will automatically get into pairing mode, search display device name: "Aideepen.com Audio"
3. Then turn on the power, pairing the device when the red and blue flashes alternately.
Please attention, If the Bluetooth connection is not available, please kindly ignore the "Aideepen Audio" Bluetooth, device is disconnected for 10 seconds, re-search for pairing.
4. Attention: The device is only for mobile phone, not used for computer.

--- Wiring Diagram:



Any situations, please contact us by email: sales@aideepen.com