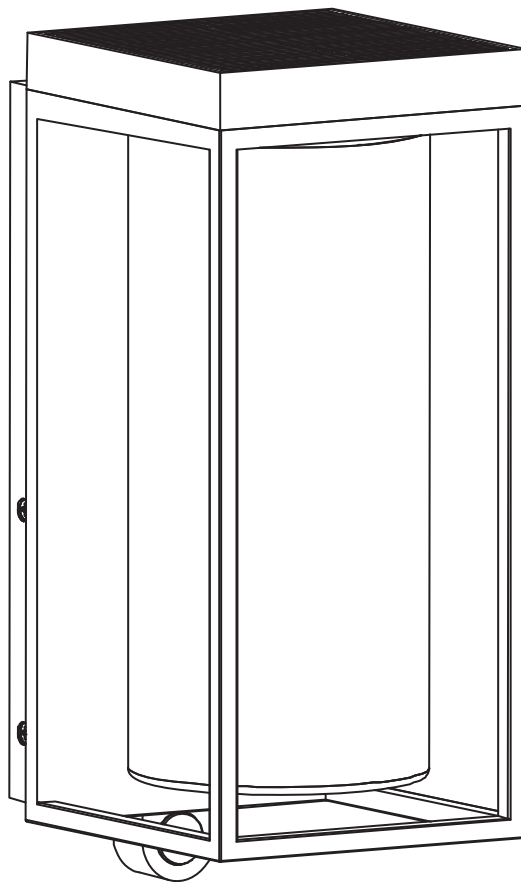




## **SOLAR WALL LANTERN**

### **Owners Manual**

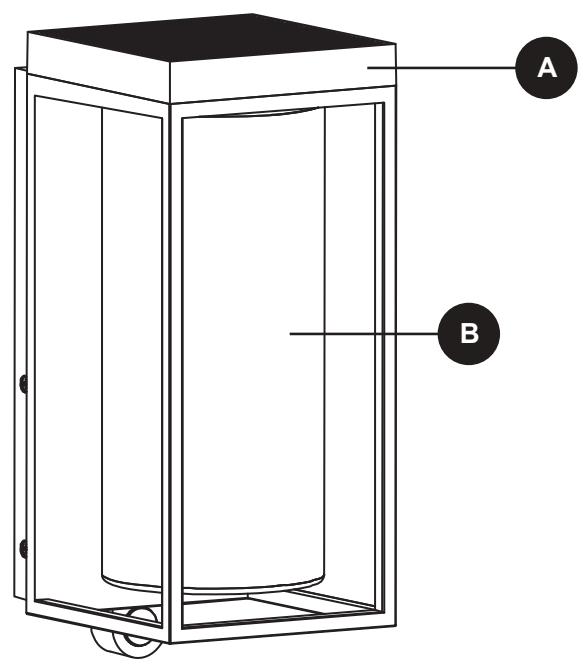
**MODEL #6988804012**



**IMPORTANT,  
RETAIN FOR FUTURE REFERENCE:  
READ CAREFULLY**

# PACKAGE CONTENTS

---



PART	DESCRIPTION	QUANTITY
A	Fixture	1
B	Glass cover	1

# HARDWARE CONTENTS (not shown actual size)

---

AA



Screw

Qty. 2

BB



Plastic  
Anchor

Qty. 2

CC



Bulb

Qty. 1



## SAFETY INFORMATION

Please read and understand this entire manual before attempting to assemble, operate or install the product.



### WARNING:

- Changes or modifications to this unit not expressly approved by the party responsible for compliance could void the user's authority to operate the equipment.
- Do not put the battery in fire - it may explode.
- Do not immerse into water.
- Do not expose the light to fire or intense heat as the battery may explode.
- The solar charger board should be set in a sunny area, where maximum sunlight can be collected. Typically, the solar board should face a direction (south) where sunlight can charge the board for at least 3 hours per day (5 hours per day if behind glass). It is suggested to charge the light for 24 hours before first use.

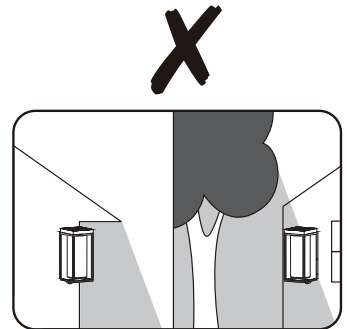
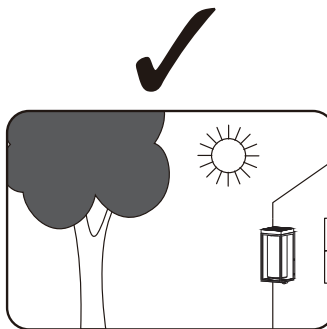
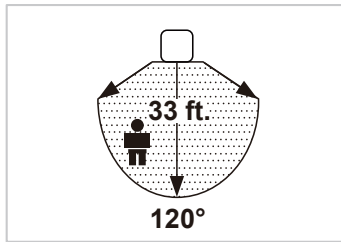
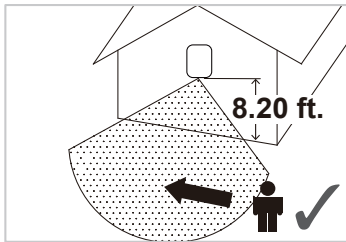
## PREPARATION

Before beginning to assemble or installing lighting fixture, make sure all parts are present. Compare parts with package contents list and hardware contents list. If any part is missing or damaged, do not attempt to assemble, install or operate the product.

**Estimated Assembly Time: 10-20 minutes.**

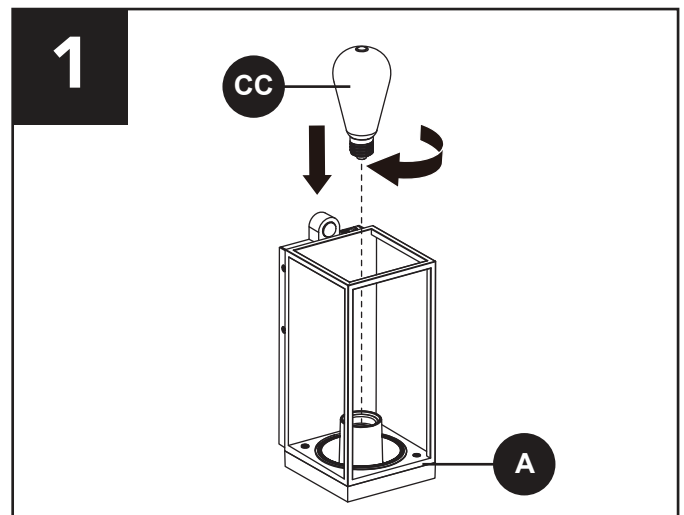
**Tools Required for Assembly:** Phillips Screwdriver, Electric Drill, Ladder.

## INSTALLATION

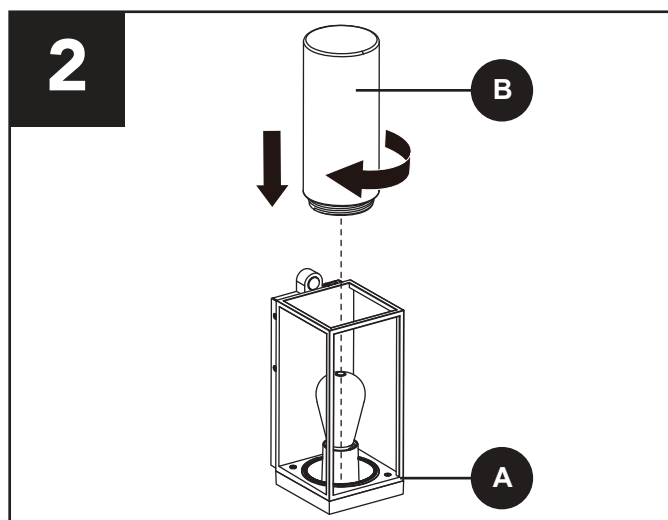


1. Install the bulb (CC) to the fixture (A).

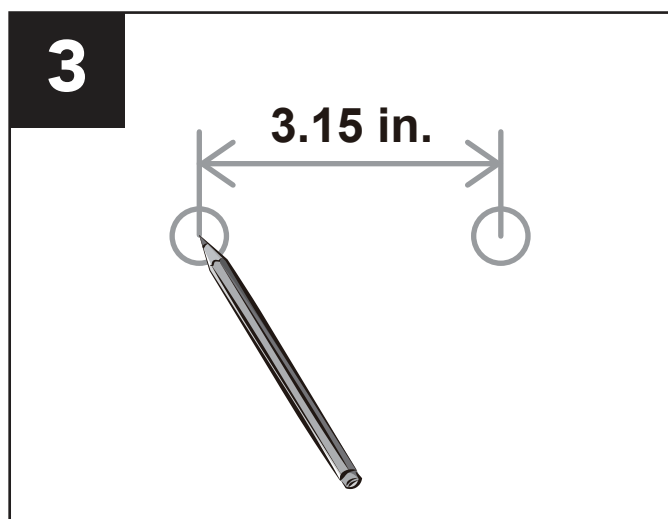
**CAUTION:** Only use this type of bulb:  
E26 LED (DC 3.5V 2W)



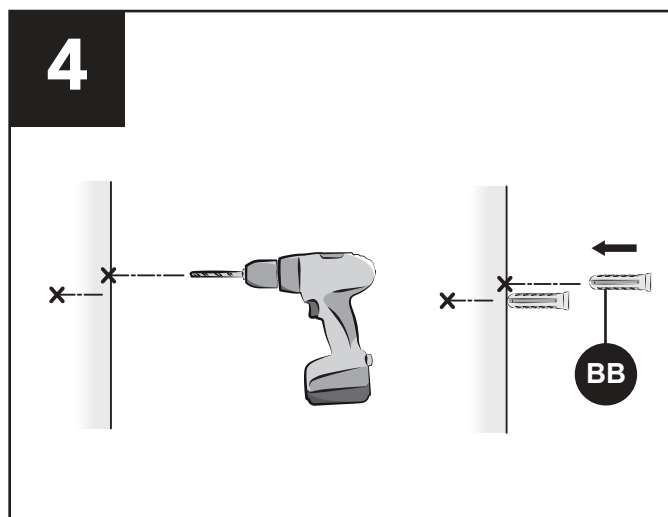
2. Screw the glass cover (B) clockwise into the fixture (A).



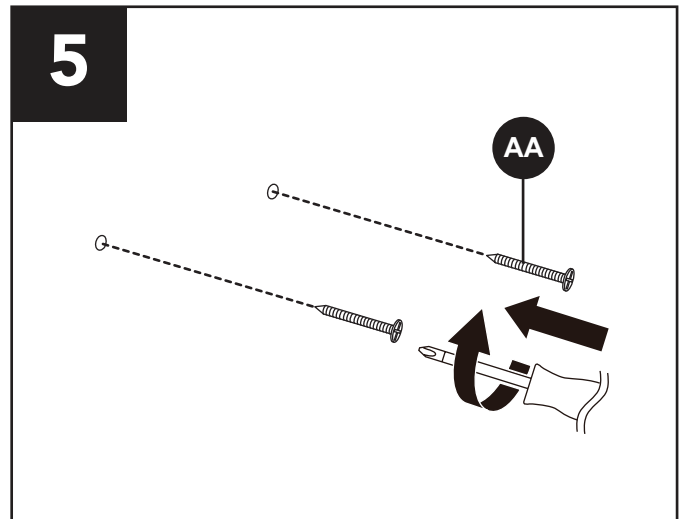
3. Choosing a desired location for the fixture (A), then mark the position of the drill holes by using a pencil.



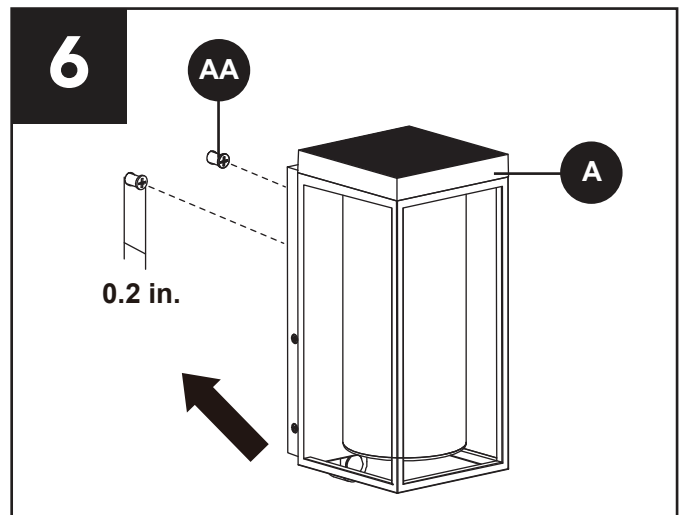
4. Drill with a suitable drill bit (7/32 in.) and plug the mounting holes with plastic anchors (BB).



5. Insert the screws (AA) into the mounting holes by using the Phillips screwdriver.

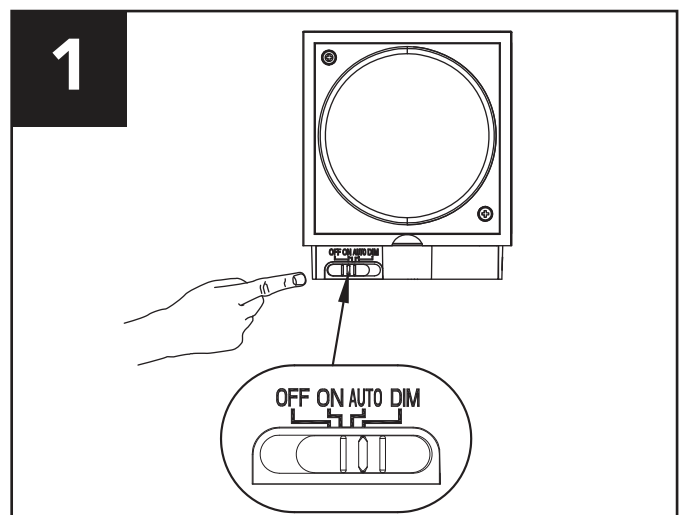


6. Leave 0.2 in. of the screws exposed.  
Hang the fixture (A) on the two screws (AA).

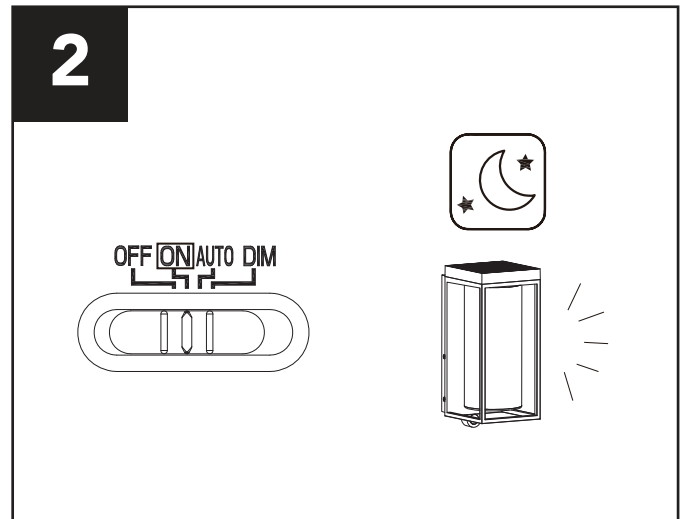


## OPERATING INSTRUCTIONS

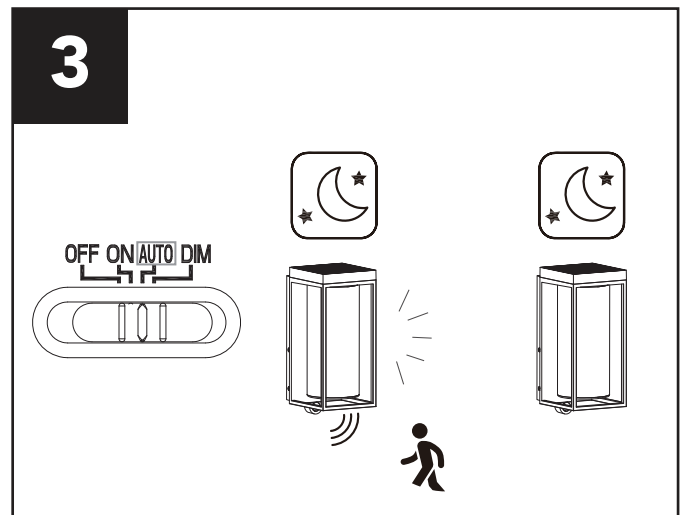
1. Move the switch to the desired mode.



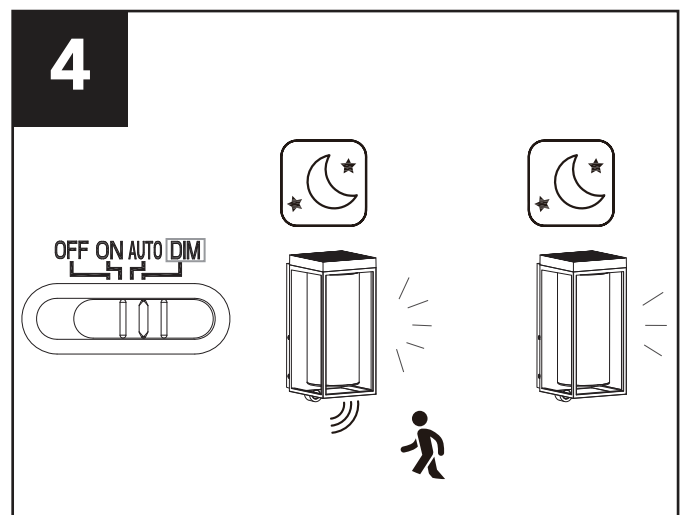
2. Using ON mode:  
Light on at night; the sensor is off.



3. Using AUTO mode:  
Light on when the sensor detects motion.  
Light off when the motion leaves.

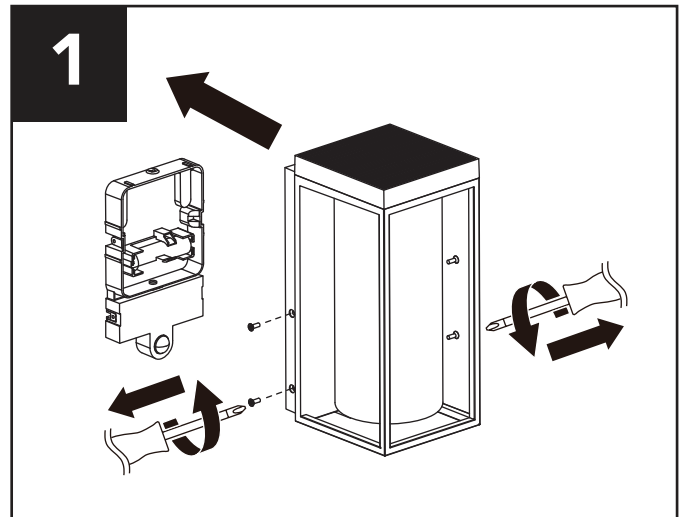


4. Using DIM mode:  
Light on when the sensor detects motion.  
Light turns to low brightness when the motion leaves.

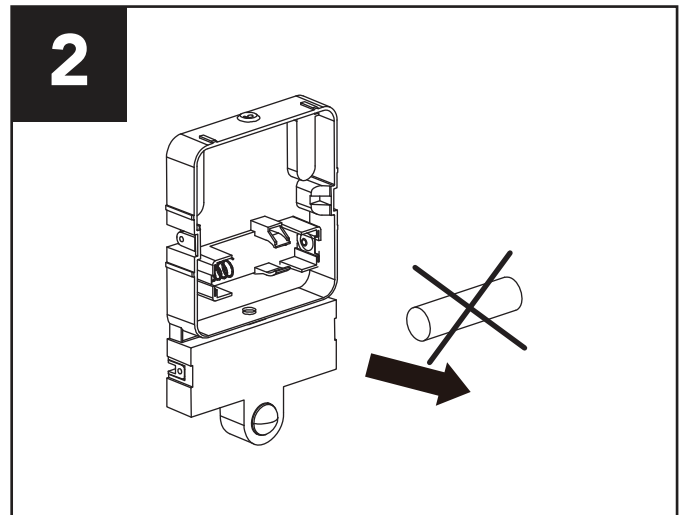


# BATTERY CHANGE

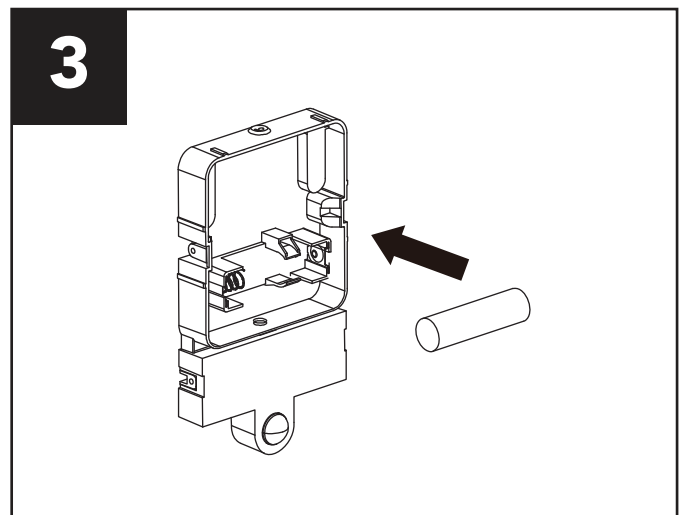
1. Detach the back plate by unscrewing the screws pre-assembled in the fixture with a Phillips screwdriver.



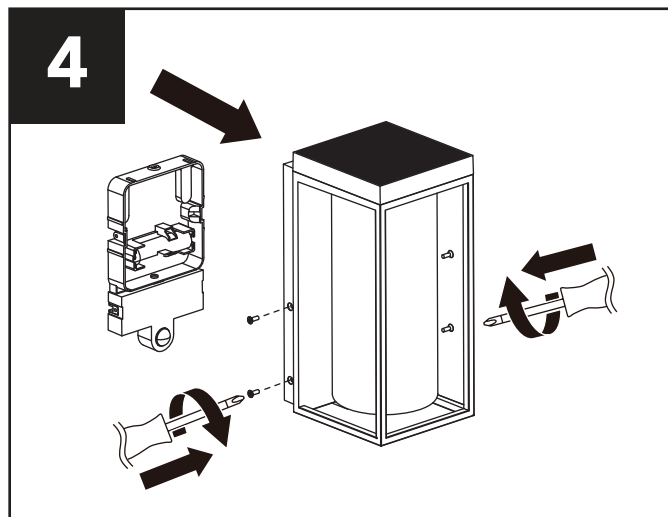
2. Take out the old battery from the battery compartment.  
**CAUTION:** Batteries must be recycled or destroyed appropriately.



3. Install a new battery (3.7 V 1500 mAh Li-ion).



4. Install the back plate using the screws removed in step 1.



## CARE AND MAINTENANCE

- To prolong the original appearance, clean the light fixture with clear water and a soft, damp cloth only.
- Periodically clean the solar panel with a soft cloth and warm water.
- Keep the panel clear of snow and leaves.
- Make sure trees and other objects do not block sunlight from the panel.
- Do not use paints, solvents, or other chemicals on this light fixture. They could cause a premature deterioration of the finish.
- This is not a defect in the finish and will not be covered by the warranty.
- Do not spray the light fixture with a hose or power washer.

## TROUBLESHOOTING

PROBLEM	POSSIBLE CAUSE	CORRECTIVE ACTION
The light will not come ON.	<ol style="list-style-type: none"> <li>1. The battery is low or drained.</li> <li>2. The light may be detecting daylight or light from another source preventing the light from coming on.</li> <li>3. The bulb is broken.</li> </ol>	<ol style="list-style-type: none"> <li>1. Charge the battery fully.</li> <li>2. Relocate the light.</li> <li>3. Change a new LED bulb.</li> </ol>
The light stay in a low brightness, the battery does not fully charge.	<ol style="list-style-type: none"> <li>1. If there is overcast days, the solar panel may not convert enough daylight to recharge the battery sufficiently.</li> <li>2. There is no enough sunlight.</li> <li>3. There is dust and debris on the solar panel.</li> </ol>	<ol style="list-style-type: none"> <li>1. Wait for the sunny day.</li> <li>2. Reposition solar panel to receive more sunlight.</li> <li>3. Clean dust and debris from solar panel.</li> </ol>



## 3-YEAR LIMITED WARRANTY

---

If this product fails due to a defect in materials or workmanship within three (3) years from the date of purchase, return it along with proof of date of purchase and it will be replaced with the same or comparable model free of charge.

This warranty is void if damage or defect has resulted from accident, abuse, misuse or faulty repair. This warranty gives you specific legal rights and you may have other rights that vary from state to state.

IN NO EVENT WILL LIABILITY EXTEND TO ANY CONSEQUENTIAL, SPECIAL, INCIDENTAL OR INDIRECT DAMAGES OF ANY KIND ARISING OUT OF THE USE OR MISUSE OF THIS PRODUCT. SOME STATES DO NOT ALLOW THE EXCLUSION OR LIMITATION OF INCIDENTAL OR CONSEQUENTIAL DAMAGES SO THE ABOVE EXCLUSION OR LIMITATION MAY NOT APPLY TO YOU.

LUTEC USA LLC:  
149B Houston Rd Troutman NC 28166  
Ningbo UTEC Electric Co.,LTD  
CN8, Far East Industry Park, Yuyao, China  
[www.lutec.com](http://www.lutec.com)  
[service@lutec.com](mailto:service@lutec.com)

**Please call our Customer Service line at 877-714-8669  
for assistance Monday - Friday 9 a.m. to 5 p.m. EST**

Printed in China