

## SOFTWARE UPDATE PROCEDURE FLEX FUNCTION DISPLAY Model SFD-1010/1012

(Product Name: SINGLE FUNCTION DISPLAY)

The software built into the SFD-1010/1012 can be updated by following the steps below.

### 1. Preparation

Prepare the following items.

- USB2.0 memory (FAT32, Minimum 200 MB required)
- Software package file

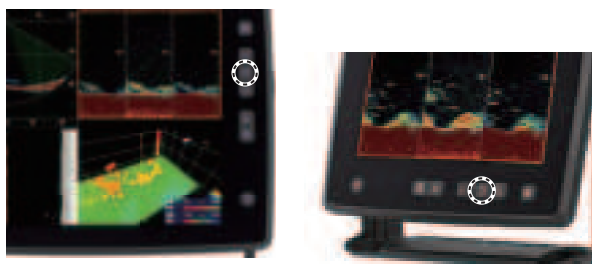
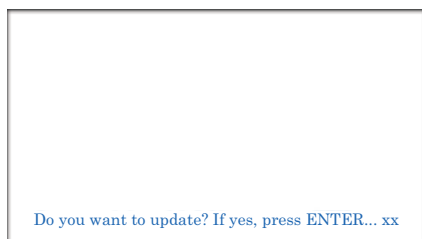
### 2. Software Update Procedure

1. Copy the software file to the root of USB memory.  
Directory is "x:/\_update\_sfd\_img.dat" ("x" for USB memory in use).
2. Insert the USB memory to the USB port of the SFD-1010/1012.
3. For landscape/horizontal orientation, hold the [ $\wedge$ ] (UP arrow key, see the left side of the figure below) and turn the power on. For portrait/vertical orientation, hold the [ $\>$ ] (RIGHT arrow key, see the right side of the figure below) and turn the power on. Keep pressing the arrow key until the update window appears in the step 4.



Landscape/Horizontal orientation    Portrait/Vertical orientation

4. The white screen appears with showing the message [Do you want to update? If yes, press ENTER... xx]. ("xx" for count-down time indication). Release the [ $\wedge$ ] (UP) or [ $\>$ ] (RIGHT) key and press the [ $\bigcirc$ ] (ENTER) key (see the figure below).



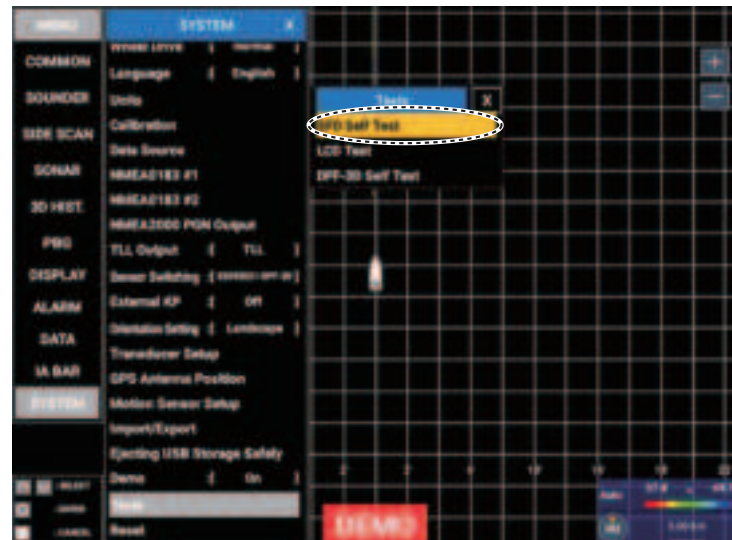
**Note:** If the [ $\bigcirc$ ] (ENTER) key is not pressed before the count-down is complete, the display will start up in a regular sequence.

5. The display switches to the update mode and shows the message [Preparing for System Up-date...].
6. In the later process, the display will indicate variable contents according to the update content and opens the application after the process is complete. Wait until the application starts up.
7. When the sequences are complete, the application will automatically starts up.

### 3. How to check software version

Each version can be checked on the self-test screen.

1. Select [SYSTEM] - [Tests] - [SFD Self Test] from the menu (see the figure below).



2. Test screen is as shown below. Check for the latest versions.

