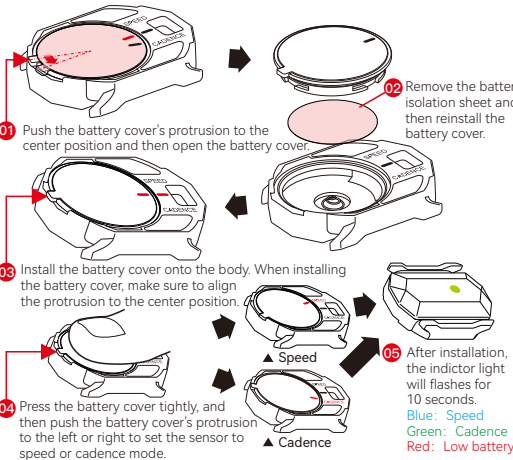
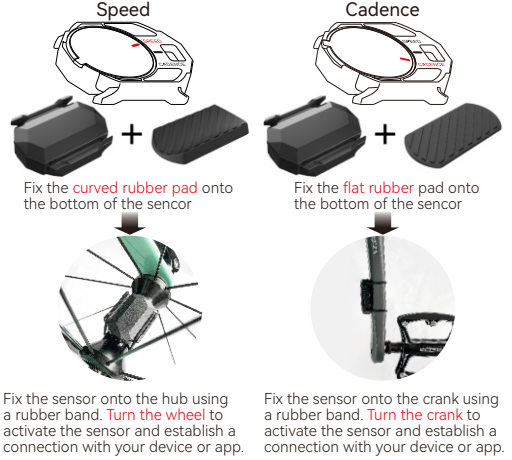


Speed/Cadence Sensor C3
User Guide

Quick Start



Fix to Bicycle



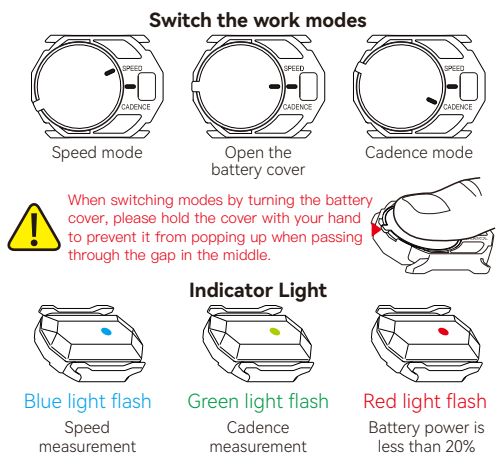
Instructions for Use

- Before using, please open the battery cover, and remove the transparent insulation spacer.
- One sensor cannot measure both speed and cadence simultaneously. If you need to measure both, please purchase two sensors.
- For speed measurement, the hub width must be more than 38mm.
- The product defaults to cadence measurement. The Bluetooth name is CYCPLUS S3 when used for speed measurement.
- When using Bluetooth protocol, it can only be connected to one device or app at a time. To change the device or app, please disconnect the previous one first.
- When using the ANT+ protocol, it can be connected to multiple devices simultaneously.
- When using a smartphone app, search for the sensor in the app. Searching via phone Bluetooth is invalid.

Specifications

- Dimension: 9.5mm×29.5mm×38.0mm
- Weight: 9.2g
- Battery: 220mAh CR2032
- Usage time: 600 hours (Cadence) / 400 hours (Speed)
- Standby time: 300 days
- Protection rating: IP67
- Compatible with: Garmin, Wahoo, Zwift, Tacx, BLJton, XOSS, Blackbird, and other devices
- Protocol standards: The sensor can connect to any APPs or devices that support Bluetooth or Ant+.

Summary



Factory Info

Manufacturer:
Chengdu Chendian Intelligent Technology Co., Ltd

Warranty: One-year free replacement or repair

After sale E-mail: steven@cycplus.com

EC	REP	EUBRIDGE ADVISORY GMBH Virginia Str. 2 35510 Butzbach, Germany eubridge@outlook.com
----	-----	---

UK	REP	TANMETINT'L BUSINESS LTD 9 Pantygraigwen Road, Pontypridd Mid Glamorgan, CF37 2RR, UK Tanmetbiz@outlook.com
----	-----	---



Points de collecte sur www.quefairedemesdechets.fr
Privilégiez la réparation ou le don de votre appareil !

MADE IN CHINA