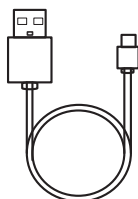
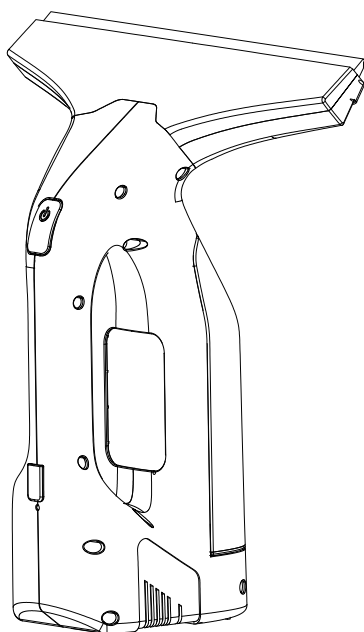


TITAN

3.7V Window Cleaner



TTS1070VAC

EAN: 5063022533098



CAUTION: Read the instructions before using the machine.

V0428 / BX220IM

Let's get started...

These instructions are for your safety. Please read through them thoroughly before use and retain them for future reference.



Getting **started...** 02

Safety information	03
Your product	10
Before you start	13



In more **detail...** 17

Product functions	18
Care and maintenance	23
Troubleshooting	26
Recycling and disposal	27
Guarantee	28

Safety warnings

1. This appliance can be used by children aged from 8 years and above and persons with reduced physical, sensory or mental capabilities or lack of experience and knowledge if they have been given supervision or instruction concerning use of the appliance in a safe way and understand the hazards involved. Children shall not play with the appliance.
2. Cleaning and user maintenance shall not be made by children without supervision.

Safety warnings for window cleaner

1. Never spray water or liquids directly at electrical devices or devices that contain electrical components, such as the interior of TV set, radio receiver, electric ovens.
2. The appliance shall not be left unattended while it is connected to the mains supply.
3. The appliance must not be used if it has fallen on the ground, if there are visible signs of damage or if it is leaking.
4. Before emptying the dirty water tank, make sure that the appliance is turned off and not connected to the charger.
5. **WARNING:** Only use the appliance in its upright position.
6. **WARNING:** Do not use corrosive chemicals or any products containing bleach with this window vacuum.
7. **WARNING:** To ensure machine safety, use only original spare parts from the manufacturer or approved by the manufacturer.
8. Only use the appliance in combination with regular no foam window cleaning agents.
9. Never use the product outdoors in the rain.

Safety warnings

10. Wear appropriate Personnel Protection Equipment (PPE) while operation e.g. eye protection.
11. Particular care must be taken when using the product at height.
12. Do not lean out of the window when using the product.
13. Use the appliance only for its intended purpose. Do not direct the liquid from spray bottle towards persons or animals nearby.
14. Do not insert objects into vacuum aperture.
15. If there is any possibility that the product or detergents could harm or discolour a surface, it is recommended that compatibility be tested in an inconspicuous area before use.
16. Do not use undiluted acids, acetone or solvents.
17. Do not use flammable liquids.
18. Do not use boiling or hot water in the product or spray bottle.
19. Do not submerge the appliance into water. When cleaning or operating the appliance, never immerse any of its electrical parts in water or other liquids.
20. The product contains a battery that is non-replaceable.
21. The plug must be removed from the socket-outlet before cleaning or maintaining the appliance.
22. The appliance is only to be used with the power supply unit provided with the appliance.

Safety Warnings for Battery pack and Charger Battery Safety Instructions



1. **Recharge only with the charger specified by the manufacturer.** *A charger that is suitable for one type of battery pack may create a risk of fire when used with another battery pack. Incorrect use may result in electric shock, overheating or leakage of corrosive liquid from the battery.*
2. **Under abusive conditions, liquid may be ejected from the battery; avoid contact.** *If contact accidentally occurs, flush with water. If liquid contacts eyes, additionally see medical help. Liquid ejected from the battery may cause irritation or burns.*
3. **Do not place appliances or their batteries near fire or heat.** *Continuous intense sunlight, fire or other heat sources may cause an increased danger of explosion.*
4. **Batteries can explode in the presence of a source of ignition, such as a pilot light.** *To reduce the risk of serious personal injury, never use any cordless product in the presence of an open flame. An exploded battery can propel debris and chemicals. If exposed, flush with water immediately.*
5. **Do not charge battery in a damp or wet location.** *Following this rule will reduce the risk of electric shock.*
6. **Longer life and better performance can be obtained if the battery is charged when the air temperature is between 18°C and 24°C.** *Do not charge the battery in air temperature below 4°C or above 40°C. This is important as it can prevent serious damage to the battery.*

Safety warnings

7. **Do not disassemble the battery and avoid mechanical damage to the battery. Risk of short circuit and fumes may be emitted.** *Ensure fresh air and seek medical assistance in the event of discomfort.*

Charger Safety Instructions

1. This appliance can be used by children aged from 8 years and above and persons with reduced physical, sensory or mental capabilities or lack of experience and knowledge if they have been given supervision or instruction concerning use of the appliance in a safe way and understand the hazards involved. Children shall not play with the appliance.
2. Cleaning and user maintenance shall not be made by children without supervision.
3. **Do not subject the appliance to strong sunlight over long periods and do not leave it near a heat source.** *Heat damages the battery and there is a risk of explosion.*
4. **Allow a hot battery to cool before charging.**
5. **Do not use non-rechargeable batteries!**
WARNING: *Do not recharge non-rechargeable batteries*
6. **Do not attempt to charge appliances other than those supplied.** *The charger and appliance supplied with it are specifically designed to work together.*
7. **Before each use, check the charger cable and plug. Do not use a defective charger and do not disassemble the charger.** *Incorrect reassembly may result in the risk of fire, electric shock or electrocution.*
8. **Protect the charger against moisture and wet conditions.**



9. **Operate the charger only with the appropriate original batteries.** *Charging other batteries may result in injuries and risk of fire.*
10. **Avoid mechanical damage to the charger.** *This can result in internal short circuits.*
11. **Do not operate the charger on easily inflammable surfaces (e.g. paper, textiles, etc.).** *The heating of the battery charger during the charging process could pose a fire hazard.*
12. **Do not abuse the cord of the charger.** *Never use the cord for carrying, pulling or unplugging the charger.*
13. **Keep the cord away from heat, oil, sharp edges or moving parts.** *Damaged or entangled cords increase the risk of electric shock.*
14. **Do not operate the charger with a damaged cord or plug, which could cause shorting and electric shock.** *If damaged, immediately discontinue use. Replace the charger with the identical unit as listed in the Product Specifications in this manual.*
15. The battery of the appliance is not fully charged at the time of delivery. It therefore needs to be fully recharged before you use it for the first time. For the first recharge cycle, charge the battery pack fully.
16. Do not use a charger that has been dropped or received a sharp blow.
17. The voltage indicated on the charger rating plate must correspond to the voltage of the power source.
18. Never touch the mains plug with wet hands.
19. It is good practice to unplug the charger when not in use.

The following information applies to all users:

Vibration and noise reduction

To reduce the impact of noise and vibration emission, limit the time of operation, as well as wear personal protective equipment.

Safety warnings

Take the following points into account to minimise the vibration and noise exposure risks:

1. Only use the product as intended by its design and these instructions.
2. Ensure that the product is in good condition and well maintained.
3. Use correct accessories for the product and ensure they are in good condition.
4. Keep tight grip on the handles/grip surface.
5. Maintain this product in accordance with these instructions and keep it well lubricated (where appropriate).
6. Plan your work schedule to spread any high vibration tool use across a longer period of time.
7. Prolonged use of the product exposes the user to vibrations that can cause a range of conditions collectively known as hand-arm vibration syndrome (HAVS) e.g. fingers going white; as well as specific diseases such as carpal tunnel syndrome. To reduce this risk when using the product, always wear protective gloves and keep your hands warm.

Emergency

Familiarise yourself with the use of this product by means of this instruction manual. Memorise the safety directions and follow them to the letter. This will help to prevent risks and hazards.

1. **Always be alert when using this product, so that you can recognise and handle risks early.** Fast intervention can prevent serious injury and damage to property.

2. **Switch off if there are malfunctions.** Have the machine checked by a qualified professional and repaired, if necessary, before you operate it again.

Residual risks

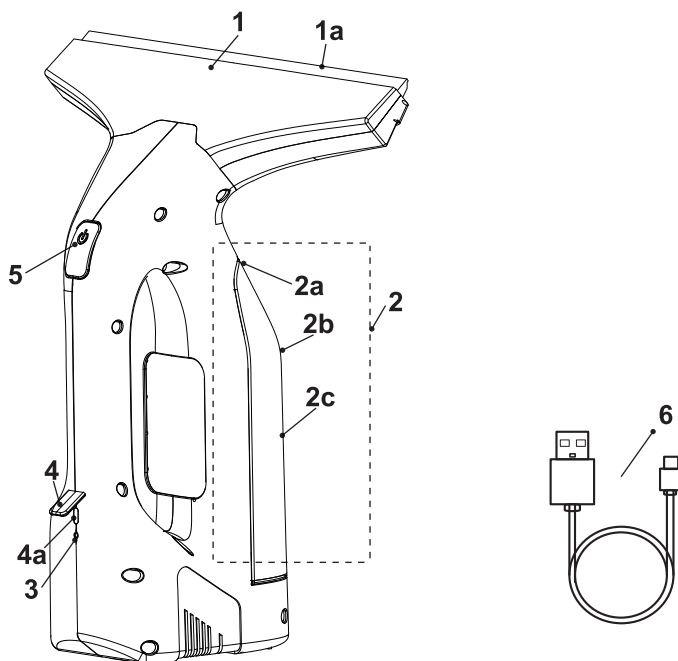
Even if you are operating this product in accordance with all the safety requirements, potential risks of injury and damage remain. The following dangers can arise in connection with the structure and design of this product:

1. Health defects resulting from vibration emission if the product is being used over long periods of time or not adequately managed and properly maintained.
2. Injuries and damage to property due to broken attachments or the sudden impact of hidden objects during use.
3. Danger of injury and property damage caused by flying objects.



WARNING! This product produces an electromagnetic field during operation! This field may under some circumstances interfere with active or passive medical implants! To reduce the risk of serious or fatal injury, we recommend persons with medical implants to consult their doctor and the medical implant manufacturer before operating this product!

Your product



1. Suction attachment
 - a) Rubber strip
 - b) Attachment lock*
 - c) Suction port*
2. Dirty water tank
 - a) Water tank lock
 - b) Easy empty plug
 - c) Water tank
 - d) Inter-connection part*
 - e) Max mark*
3. Charger status indicator
4. Charger socket cover
 - a) Charger socket
5. On/off switch
6. USB-C cord



NOTE: Parts marked with * are not shown in this overview. Please refer to the respective section in the instruction manual.

Technical specifications

General



> Rated voltage	: 3.7 V
> Number of batteries	: 1
> Input	: 5.0V d.c. 2.0A Max
> Max. suction power	: 1.5-1.7 Kpa
> Rated power	: 20 W
> Protection class	: IP X4
> Dirty water tank	: 100 ml (max. level)
> Weight	: 0.76 kg

Battery pack

> Rated voltage	: 3.7 V 
> Rated capacity	: 2200 mAh
> Battery type	: Li-Ion

Symbols

On the product, the rating label and within these instructions you will find among others the following symbols and abbreviations. Familiarise yourself with them to reduce hazards like personal injuries and damage to property.

V~	Volt, (alternating voltage)
V 	Volt, (direct current voltage)
Hz	Hertz
W	Watt
A	Ampere
mAh	Milliampere-hour
kg	Kilogram
dB(A)	Decibel (A-rated)
m/s ²	Metres per second squared
IPX4	The product is protected against water splashing.
yyWxx	Manufacturing date code; year of manufacturing (20yy) and week of manufacturing (Wxx).
	Lock / to tighten or secure.

Symbols



Not for outdoor use.



Unlock / to loosen.



Note / Remark.



Caution / Warning.



Switch the product off and remove battery pack before assembly, cleaning, adjustments, maintenance, storage and transportation.



Read the instruction manual.



Wear eye protection.



Wear respiratory protection.



The product complies with the applicable European directives and an evaluation method of conformity for these directives was done.



UK Conformity Assessed.



WEEE symbol. Waste electrical products should not be disposed of with household waste. Please recycle where facilities exist. Check with your Local Authority or local store for recycling advice.



Crossed out dust bin. Batteries and battery packs should not be disposed of with household waste. Please recycle where facilities exist. Check with your Local Authority or local store for recycling advice.



Batteries contain Lithium-ion. Do not dispose of batteries in household waste.

Li-ion

Rating label explanation

TTS1070VAC=Model number

TT=TITAN

S=3.7V DC

1070=Version number

VAC=Vacuum

Unpacking

1. Unpack all parts and lay them on a flat, stable surface.
2. Remove all packing materials and shipping devices if applicable.
3. Make sure the delivery contents are complete and free of any damage. If you find that parts are missing or show damage do not use the product but contact your dealer. Using an incomplete or damaged product represents a hazard to people and property.
4. Ensure that you have all the accessories and tools needed for assembly and operation. This also includes suitable personal protective equipment.



WARNING! The product and the packaging are not children's toys! Children must not play with plastic bags, sheets and small parts! There is a danger of choking and suffocation!

You will need

(items not supplied)

Suitable personal protective equipment
Adapter

(items supplied)

Suction attachment (1)
USB-C cord(6)

Assembly



WARNING! The product must be fully assembled before operation! Do not use a product that is only partly assembled or assembled with damaged parts! Follow the assembly instructions step-by-step and use the pictures provided as a visual guide to easily assemble the product!



NOTE: Take care of small parts that are removed during assembly or when making adjustments. Keep them secure to avoid loss.

Suction attachment assembly

Attaching

- > Align the suction attachment (1) to the suction port (1c) of the product. Insert the suction attachment (1) into the suction port (1c) all the way to the end until you hear a click (Fig. 2).
- > Ensure the attachment lock (1b) engaged properly in the slot of the product.

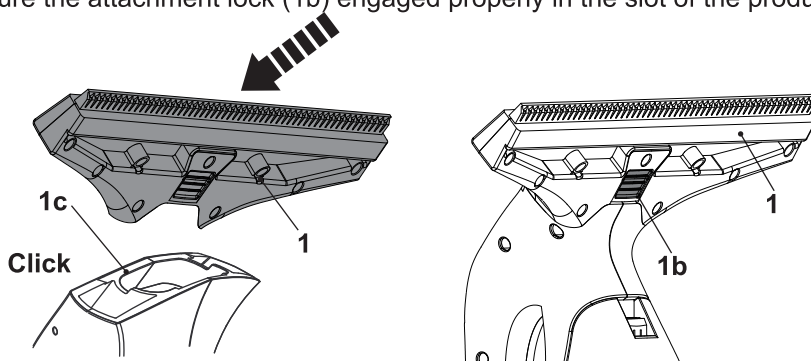


Fig. 2

Detaching

- > Press the attachment lock (1b) and hold it in position (Fig. 3, step 1).
- > Pull out the suction attachment (1) from the product (Fig. 3, step 2).

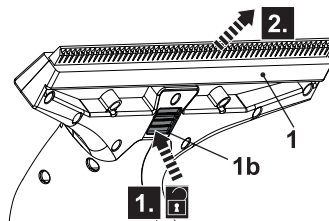


Fig. 3

Charger

Use the a suitable adapter (suggest that the ouput: 5V 2.0A Max) to charge the battery inside the product.



WARNING! Do not to charge the product with liquid in the dirty water tank (2).

Battery has been shipped in a low charge condition. Charge it fully before first use. Only charge with the correct charger.

> Open the charger socket cover (4) (Fig.4 , step 1). Attach the USB-C cord to the charge socket (4a) (Fig.4 , step 2). Ensure it engaged properly.

Charger

> Connect the adapter plug to a suitable power supply.

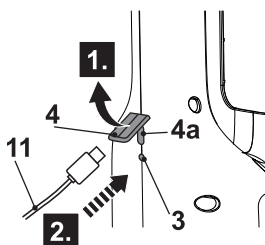




Fig. 4

> The charging status is indicated by the charging status indicator (3) as follows:

Charging status indicator (3)	Status
flashing blue light 	Charging
steady blue light 	Charging finished



NOTE: It is normal for the charger to become warm (but not hot) during charging process.

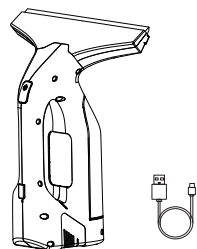
- > When the battery is fully charged, disconnect the adapter from the power supply and charge socket (4a).
- > Reinstall the charger socket cover (4). Ensure it engaged properly.



In more detail...

Product functions	18
Care and maintenance	23
Troubleshooting	26
Recycling and disposal	27
Guarantee	28

In more detail...



Intended use

The product is designated with a rated voltage of 3.7 V $\equiv \equiv \equiv$.

The device is intended for domestic use to vacuum liquids from smooth, non-porous surfaces such as glass, mirrors and tiles. It is not suitable for vacuuming dust. The surfaces should be vertical, or near vertical. It is not suitable for horizontal surface cleaning. Use detergents designed for window vacuum machines.

For safety reasons it is essential to read the entire instruction manual before first operation and to observe all the instructions therein.

In more detail...



Dirty water tank

Liquid on the surface to be cleaned is collected to the dirty water tank (2). Empty the dirty water tank (2) if the water level reaches the max. mark (2g) (approx. 100 ml).



CAUTION! The upper and lower tanks are not permanently connected, so operate the device carefully and take care not to spill the liquid accidentally.

In more detail...

Dirty water tank

Detaching the dirty water tank

- > Press down the water tank lock (2a) (Fig. 5, step 1). The dirty water tank (2) is popped up slightly.
- > Remove the dirty water tank (2) from the product (Fig. 5, step 2).
- > To empty the dirty water tank, open the easy empty plug (2b), tilt the dirty water tank (2) and pour the dirty water out.

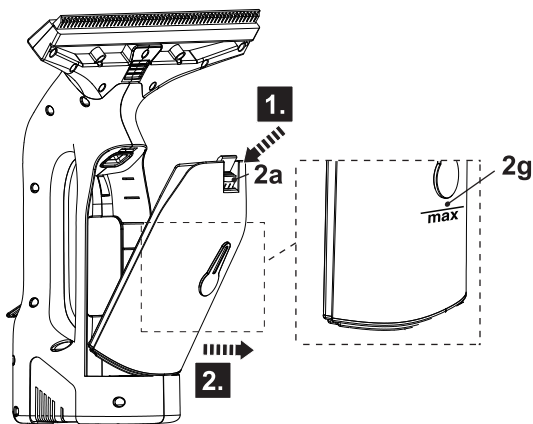


Fig. 5

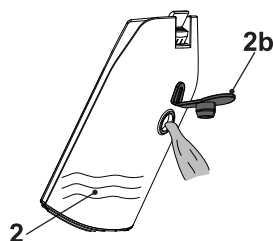


Fig. 6

Attaching the dirty water tank

- > Close the easy empty plug (2b).
- > Press down the water tank lock (2a) (Fig. 7, step 1). Reinstall the dirty water tank (2) (Fig. 7, step 2). Ensure the dirty water tank (2) is engaged properly with a click.

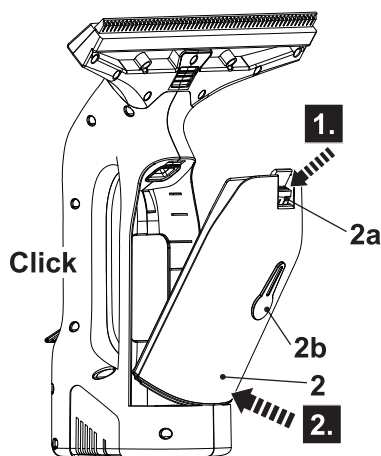
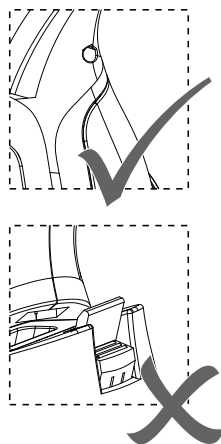
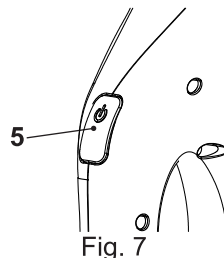


Fig. 7



On/off switch

- > Switch the product on by pressing the On/off switch (5) (Fig. 7).
- > Press the On/off switch (5) again to switch the product off.



Operation



NOTE: Only use the appliance in combination with regular no foam window cleaning agent.

- > **WARNING!** Do NOT place the window vac on polished or delicate surfaces.



NOTE: Always follow dilution and/or concentration instructions given on packaging of suitable cleaning agents.



WARNING! Prior to each use, check the suction attachment for any dirt residues (particles) that might scratch the cleaned surface. If the suction attachment is dirty, wipe it with a clean, damp cloth.

- > Press the On/off switch (3) to turn on the product.
- > Set the product with the suction attachment (1) at the top of the surface to be cleaned (e.g. a window). Slowly move the product all the way down the surface being cleaned, ensuring that the rubber blade remains in contact with the surface at all times. Water and detergent residue will be removed and sucked into the dirty water tank (2) (Fig. 9).
- > **NOTE!** the water may come from the vents and this is normal.

In more detail...

Operation

- > Continue along the surface being cleaned, slightly overlapping the previous stroke each time, until the whole surface is complete.



WARNING! Move the product from top to bottom. You must not slide the product horizontally when cleaning the surfaces.

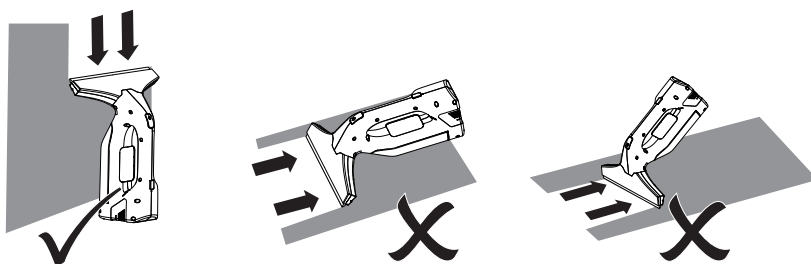


Fig. 9

- > If water level reaches the max. mark (2f), switch off the product and empty the dirty water tank (2).

Tips

- > Switch off the product before removing the dirty water tank (2).
- > Pay attention to the pressure applied on window/glass. Do not damage window/glass.
- > Pay attention to the liquid flowing down the window/glass.
- > The appliance is not intended to vacuum up fluids from horizontal surfaces.
- > Do not use the product on glass with uneven surface such as frosted, textured, patterned etc.
- > The product must not be used to clean cracked or broken windows.

After use

- > Press the On/off switch (3) to turn off the product.
- > Disassemble the dirty water tank (2) and empty it if necessary.
- > Check, clean and store the product as described below.

The golden rules for care



WARNING! Always switch the product off and let the product cool down before performing inspection, maintenance and cleaning work!

- > Keep the product clean. Remove debris from it after each use and before storage.
- > Regular and proper cleaning will help ensure safe use and prolong the life of the product.
- > Inspect the product before each use for worn and damaged parts. Do not operate it if you find broken and worn parts.



WARNING! Only perform repairs and maintenance work according to these instructions! All further works must be performed by a qualified specialist!

General cleaning

- > Clean the product with a slightly damp cloth and mild soap. Use a brush for areas that are hard to reach.



NOTE: Do not use chemical, alkaline, abrasive or other aggressive detergents or disinfectants to clean this product as they might be harmful to its surfaces.

- > Check for any damage and wear. Repair damages in accordance with this instruction manual or take it to an authorised service centre before using the product again.

In more detail...

Suction attachment

- > Disassemble the suction attachment (1).
- > Clean the chamber and the rubber strip (1a) with water (Fig.10).
- > Dry the whole suction attachment (1) before reassembling.

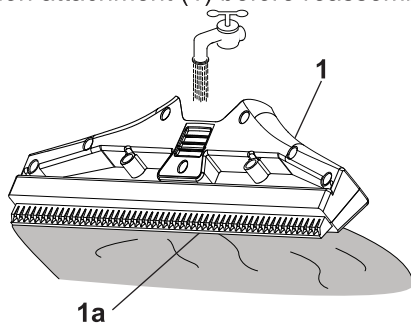


Fig. 10

Dirty water tank



WARNING! Do not fill boiling or hot water in the dirty water tank.

- > Empty and assemble the dirty water tank (2) afterwards in reverse order of the instructions above. Ensure all the parts are well aligned and reassembled securely.

Maintenance

Before and after each use, check the product and accessories for wear and damage. If required, exchange them for new ones as described in this instruction manual. Observe the technical requirements.

Repair

This product does not contain any parts that can be repaired by the consumer. Contact an authorised service centre or a similarly qualified person to have it checked and repaired.

Storage

- > Switch the product off.
- > Clean the product as described above if necessary.
- > Store the product and its accessories in a dry, frost-free place. Always store the product in a place that is inaccessible to children. The ideal storage temperature is between 10 °C and 30 °C.
- > We recommend using the original package for storage or covering the product with a suitable cloth or enclosure to protect it against dust.

Transportation

- > Switch the product off.
- > Clean the product as described above if necessary.
- > Protect the product from any heavy impact or strong vibrations which may occur during transportation in vehicles.
- > Secure the product to prevent it from slipping or falling over.

Troubleshooting

Suspected malfunctions are often due to causes that the users can fix themselves. Therefore check the product using this section. In most cases the problem can be solved quickly.



WARNING! Only perform the steps described within these instructions! All further inspection, maintenance and repair work must be performed by an authorised service centre or a similarly qualified specialist if you cannot solve the problem yourself!

Problem	Possible cause	Solution
1. Product does not start	1.1. Battery discharged 1.2. Battery too hot/cold 1.3. Other electrical defect to the product	1.1. Recharge battery 1.2. Allow to cool/warm 1.3. Contact your nearest authorised service centre
2. Restricted or no vacuum	2.1. Suction attachment blocked 2.2. Dirty water tank does not be assembled properly	2.1. Unblock suction attachment 2.2. Reassembled the dirty water tank properly
3. Product turns itself off	3.1. Battery too hot/cold	3.1. Allow to cool/warm
4. Battery will not charge	4.1. Battery charger not connected correctly 4.2. Battery too hot/cold	4.1. Check battery charger connection 4.2. Allow to cool/warm
5. Streaking on windows	5.1. Rubber strip damaged 5.2. Too much force applied 5.3. Too little force applied	5.1. Replace rubber strip 5.2. Apply reduced force 5.3. Apply more force

Recycling and disposal



Waste electrical products should not be disposed of with household waste. Please recycle where facilities exist.



Check with your Local Authority or local store for recycling advice.

For further information visit www.recycle-more.co.uk.

The product comes in a package that protects it against damage during shipping. Keep the package until you are sure that all parts have been delivered and the product is working properly. Recycle the package afterwards.

Disposal of an exhausted battery pack



The battery is Li-Ion type. To preserve natural resources, please recycle or dispose of the battery pack properly. Consult your local waste authority for information regarding available recycling and / or disposal options.

Discharge your battery pack by operating your tool, then remove the battery pack from the tool and cover the battery pack connections with heavy duty adhesive tape to prevent short circuit and energy discharge.

Do not attempt to open or remove any of the components.

In more detail...

Guarantee

We take special care to select high quality materials and use manufacturing techniques that allow us to create products incorporating design and durability. This product (**TITAN 3.7V** Window Cleaner) has a manufacturer's guarantee of 2 years against manufacturing defects, from the date of purchase (if bought in store) or date of delivery (if bought online), at no additional cost for normal (non-professional or commercial) household use.

To make a claim under this guarantee, you must present your proof of purchase (such as a sales receipt, purchase invoice or other evidence admissible under applicable law), please keep your proof of purchase in a safe place. For this guarantee to apply, the product you purchased must be new, it will not apply to second hand or display products. Unless stated otherwise by applicable law, any replacement product issued under this guarantee will only be guaranteed until expiry of the original guarantee period.

This guarantee covers product failures and malfunctions provided the product was used for the purpose for which it is intended and subject to installation, cleaning, care and maintenance in accordance with the information contained in these terms and conditions, in the user manual and standard practice, provided that standard practice does not conflict with the user manual.

This guarantee does not cover defects and damage caused by normal wear and tear or damage that could be the result of improper use, faulty installation or assembly, neglect, accident, misuse, or modification of the product. Unless stated otherwise by applicable law, this guarantee will not cover, in any case, ancillary costs (shipping, movement, costs of uninstalling and reinstalling, labour etc), or direct and indirect damage.

This guarantee does not cover defects and damage caused by or resulting from:

Normal wear and tear

Overload, misuse or neglect

Repairs attempted by anyone other than an authorised agent

Cosmetic damage

Damage caused by foreign objects, substances or accidents

Accidental damage or modification

Failure to follow manufacturer's guidelines

Loss of use of the goods

If the product is defective, we will, within a reasonable time, repair or replace it.

Rights under this guarantee are enforceable in the country in which you purchased this product. Guarantee related queries should be addressed to the store you purchased this product from.

The guarantee is in addition to and does not affect your statutory rights.

TITAN

Manufacturer • Fabricant • Producent • Producător • Fabricante:

UK manufacturer:

Kingfisher International Products Limited
1 Paddington Square
LONDON
W2 1GG
United Kingdom
www.kingfisher.com/products

EU manufacturer:

Kingfisher International Products B.V.
Rapenburgerstraat 175E
1011 VM Amsterdam
The Netherlands
www.diy.com | www.screwfix.com | www.screwfix.ie



To view instruction manuals online,
visit www.kingfisher.com/products
