



Avantco Equipment

Item #: 177C10 Project: _____

Qty: _____ Date: _____ Approval: _____

Avantco C10 12 Cup Pourover Commercial Coffee Maker with 2 Warmers-120V

Item #177C10



Technical Data

Width	7 3/4 Inches
Depth	14 1/4 Inches
Height	16 3/4 Inches
Amps	13.75 Amps
Hertz	50/60 Hz
Phase	1 Phase
Voltage	120 Volts
Wattage	1650 Watts
Brewer Type	Decanter
Coffee Filter Size	9 3/4" x 4 1/4"-4 1/2"

Features

- Ideal for church functions, break rooms, waiting areas, and other light duty applications
- Brews up to 56 cups per hour (3.5 gallons)
- Independently controlled top and bottom non-stick warmers keep coffee hot while brewing the next pot
- Compact design is ideal for applications with limited counter space
- Sleek stainless steel construction is durable and easy to maintain

Certifications



5-15P



ETL Sanitation

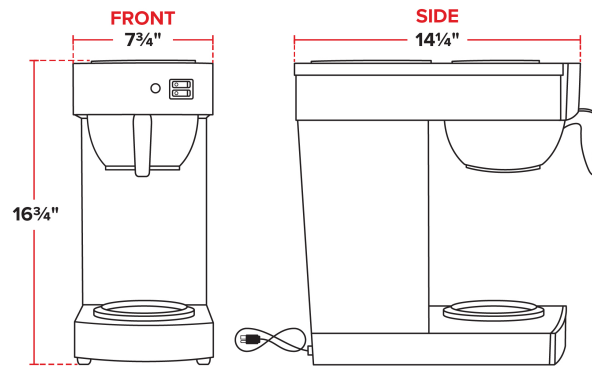


UL Listed, US

Technical Data

Number of Warmers	2 Warmers
Output	3.5 Gallons per Hour
Plug Type	NEMA 5-15P
Power Type	Electric
Style	Single
Type	Coffee Brewers
Water Source	Pourover

Plan View



Notes & Details

The Avantco C10 pourover coffee brewer is the affordable and durable solution to your coffee needs! Designed for easy use with simple push-button operation, this coffee brewer features a separate upper and lower warmer so you can constantly have a pot of hot coffee ready while another is brewing. Though the temperature is not adjustable, the unit brews coffee between 190 and 200 degrees Fahrenheit for a rich, consistent product every time. Its external stainless steel construction gives it a sleek appearance and makes it easy to clean. And to ensure you can keep up with busy hours, this compact brewer can produce up to 56 8 oz. cups of coffee per hour. The Avantco C10 pourover coffee brewer requires a 120V electrical connection.

⚠ WARNING: This product can expose you to chemicals including lead, which are known to the State of California to cause cancer and birth defects or other reproductive harm. For more information, go to www.p65warnings.ca.gov.