

150mm

SECURA®
Manufacturer's Limited Warranty

The Manufacturer of this product warrants to the original purchaser of this product that this product will be free from defects in material and workmanship under normal use and service for 2 years from date of purchase. Manufacturer will, at its option, repair or replace with a new or refurbished product. Providing a replacement product does not renew or extend the warranty period from the original date of purchase. The Manufacturer reserves the right, before having any obligation under this limited warranty, to inspect the product, and all costs of shipping the product for inspection and warranty service shall be borne solely by the purchaser.

For the fastest processing of a warranty claim, the Purchaser should e-mail CustomerCare@thesecura.com and include the product name and model #, proof of original purchase, complete contact information, and detailed information about the issue, including pictures when applicable.

The manufacturer's limited warranty is valid only in accordance with the following conditions:

1. The product is purchased directly from manufacturer or an authorized reseller or distributor.
2. Only the original purchaser is covered by this warranty. This warranty is not transferable.
3. Product is for personal use only. This warranty is void if the product is used in a commercial or institutional establishment.
4. This warranty does not cover normal wear and tear or damage caused by misuse, abuse, negligence, accident, acts of nature, or unauthorized modification or repair.
5. Purchaser must present acceptable proof of purchase for the product.
6. This warranty gives you specific legal rights, and you may also have other rights which vary from state to state.

Secura, Inc.
CustomerCare@thesecura.com
Lake Forest, California

6

SECURA®

Secura Inc.
888-792-2360 (North America)
CustomerCare@thesecura.com
Lake Forest, California
www.thesecura.com

For the fastest processing of a warranty claim, the owner should e-mail CustomerCare@thesecura.com and include the product name and model #, proof of original purchase, complete contact information, and detailed information about the issue, including pictures when applicable.

All information current at time of printing.

NA-EN-041123

SECURA®

60-Minute Countdown Visual Timer

Model: TM034

SN: 88VF

INSTRUCTION MANUAL



www.thesecura.com

Welcome to the Secura Family!

Congratulations on being the proud owner of your new Secura product. We believe in manufacturing only the highest quality kitchen, home and personal care products for our customers. We are a U.S. -based manufacturer and all our products meet strict standards for manufacturing, safety and performance.

We also believe in providing the best customer service and support in the industry. That is why we offer a 2-year warranty on this product that ensures your satisfaction - so you can enjoy it for years to come.

If you have questions or need any assistance, please email CustomerCare@thesecura.com. For fastest response, please include product name and model #, proof of original purchase, complete contact information, and detailed information about the issue, including pictures when applicable.

Your feedback and suggestions are also important to us, so please email them to us at CustomerCare@thesecura.com.

The Secura Team

SECURA®

Copyright 2022-2023 Secura, Inc. All rights reserved.

The material in this publication is protected under International and Federal Copyright Laws and Treaties, and as such, any unauthorized reprint or use of this material is strictly prohibited.

No part of this book may be reproduced or transmitted in any form without the written permission of the author, except for the inclusion of brief quotations in a review.

Reproduction or translation of any part of this work without the express permission of the copyright holder is against the law.

1

95mm

95mm

95mm

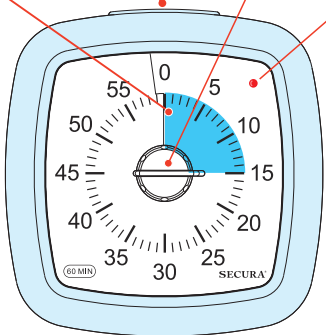
95mm

SECURA®

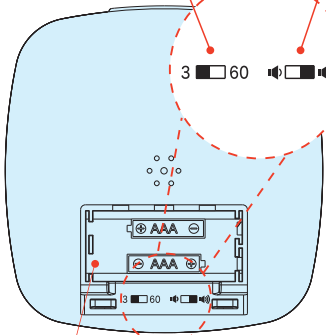
60-Minute Countdown Visual Timer

Parts Names

Visual Countdown Disk Pause / Stop Rotary Knob Indicator Light



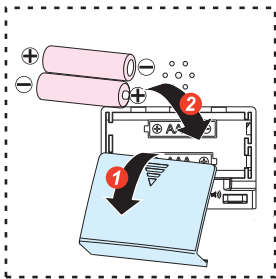
Alarm Duration Switch Alarm Volume Switch



Battery Compartment

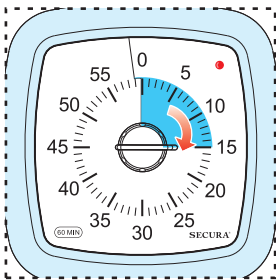
2

1. Insert batteries



Slide the cover to open the battery compartment and insert 2x1.5V AAA batteries (not included) according to the positive and negative symbols shown.

2. Timer setting

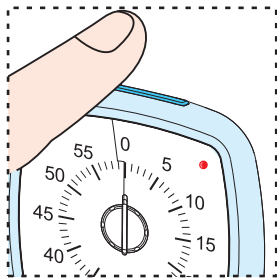


Turn the rotary knob clockwise to desired time interval, the timer will count down. When the rotary disk reaches "0" position, the timer will beep. Press the pause / stop button to turn off the alarm.

WARNING:
Do not turn the knob counterclockwise when the disk is on the 0 position, otherwise the clock will be damaged.

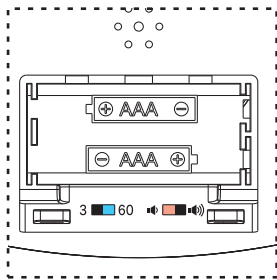
3

3. Pause



To pause during countdown, press the pause / stop button, the indicator light will illuminate red. Press the button again to restart the countdown.

4. Alarm duration and volume setting



★ "3 60"
3 = alarm duration 3 sec
60 = alarm duration 60 sec
★ " 60"
= alarm volume low
= alarm volume high

5. Low battery reminder

When the battery is low, the timer will beep and the indicator light will flash every two seconds until the timer is unable to beep or flash.

6. Cleaning

- ★ Remove batteries during cleaning.
- ★ Do not submerge the timer in water or any other liquid.
- ★ Use a soft dry cloth to wipe the surface. Do not use abrasive or harsh materials or chemicals to clean.
- ★ Do not place the timer in wet or extreme conditions.

5

150mm

95mm

95mm

95mm

95mm