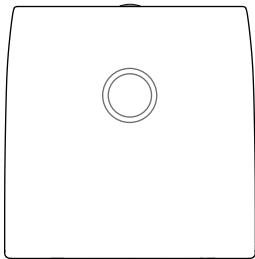


# Portable Wireless Thermal Printer



JD-21

Version: 2.1

PDF



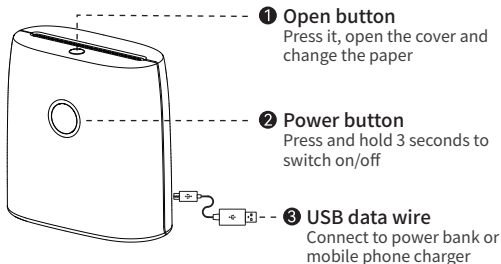
Please read the instructions carefully before you use this product.

## CONTENTS

01.Product Sketch	P1
02.Power Indicator Status	P1
03.What's in the Box	P2
04.Smartphone APP Printing	P3
05.Charging Instructions	P4
06.Open Cover and Change Paper	P4
07.Clean the Printer Head	P5
08.Thermal Paper Introduction	P6

# Portable Wireless Thermal Printer

## Product Sketch

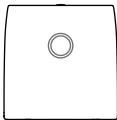


## Power Indicator Status

- Light steady on: Bluetooth connected.
- Light flashing: Bluetooth disconnected.
- Blue light on: Normal use status/full charged.
- Red light on: Cover opened/No paper/Over-heat/Charging.
- Purple light on: Low battery, please charge in time.

# What's in the Box

Printer



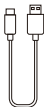
Continuous Thermal  
Sticker Paper



User Manual



App Guide Card



USB Cable

## Smartphone APP Printing

- ❶ Press and hold the power button of the printer for 3 seconds to turn on the printer.
- ❷ Download and install [Jadens Printer] APP in your smart phone.
- ❸ Turn on Bluetooth on your smart phone.
- ❹ Connect your device:

Option1: Open the App, and search for the connected printer according to the prompts in the App. ( ⚠ Tips: Don't connect printer in the phone Bluetooth settings.)

Option2: Open the APP, scan the device connection QR code by printing from printer after double clicking the power button.

- ❺ Select and edit the content to be printed in the App, confirm and print it.

### APP download

- ❶ Search and download [Jadens Printer] on Google Play or AppStore.
- ❷ Scan the following QR code to download APP.



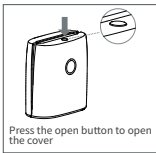
## Charging Instructions

- 5V  $\mp$  2A input charging, charging time: about 2.5 hours.
- We recommend you to use smart phone chargers for charging.
- Please full charge the printer before you use it for the first time.
- If not used for a long time, please charge once every 3 months to avoid long-term natural loss of lithium battery can not be charged.

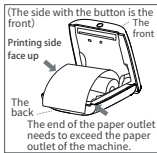
**Warm tips:** Working environment: Use at the ambient temperature of 5°C~40°C.

**Caution!** This product doesn't contain power adapter. The output specifications of the adapter shall comply with 5V  $\mp$  2A.

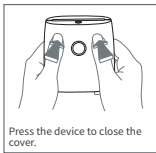
## Open/Close Cover and change Paper



❶ Open cover

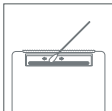


❷ Put paper in



❸ Close the cover

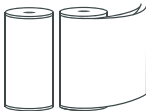
## Clean the Printer Head



- ❶ Please turn off the printer and take out the paper roll after shutdown.
- ❷ Rub the cotton cloth or cotton swab with medical alcohol and gently wipe it from the center of the print head to all sides.
- ❸ Do not use the printer immediately after cleaning the print head, please wait 1-2 minutes until the alcohol is completely evaporated.

⚠ Please do not directly touch the printing head to avoid damage. Especially, do not directly touch the printing head immediately after printing to avoid overheating and scalding.

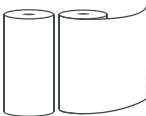
## Thermal Paper Introduction



Self-Adhesive Continuous Thermal  
Sticker Paper

Paper width: 2.2 inch (56mm)

---



Continuous Thermal Paper

Paper width: 2.2 inch (56mm)

---

### Paper Type:

Use with thermal paper ( Continuous type, Not gap label).

Note: Paper printing side please follow to page 5.



## Customer Support

**Hotline: 1-833-470-2950**

Available Time:

Tue/Wed/Thu: EST 10AM-10PM

Fri/Sat/Sun/Mon: EST 10AM-4PM 5PM-10PM

**E-mail: [support@jadens.com](mailto:support@jadens.com)**

**Website: [support.jadens.com](http://support.jadens.com)**

WhatsApp



Scan the QR code  
to talk with us

# Warranty Information

**1-YEAR LIMITED WARRANTY - REGISTER AND ACTIVATE AT PHONE APPLICATION 'Jadens Printer'.**

This 1-year limited warranty applies to repair or replacement if product,at JADENS' s option, is found to be defective in material or workmanship.

All warranty requests must be accompanied by proof of purchase. When contacting us for warranty, please have the information below.

Model: \_\_\_\_\_

Date of purchase: \_\_\_\_\_

Purchased from: \_\_\_\_\_

Order Number: \_\_\_\_\_

1. This warranty only applies to hardware components of the product that are not subject to accident, misuse, neglect, fire or damage from other external causes, alteration, repair or commercial use. Defects that are the result of normal wear and tear will not be considered manufacturing defects under this warranty.

2. This warranty does not cover damage resulting from any unauthorized attempts to repair or from any use not in accordance with the instruction manual.

3. This warranty applies only to the original purchaser of this product from the original date of purchase. This warranty applies only if the unit is purchased new from an authorized retailer and is non-transferable from the original purchaser of the item. Any warranties accompanied with this product is only valid in the country of purchase.

4. Please read the Instruction Manual carefully before setting up or using this product. If you believe this product to be suffering from a manufacturing fault, or if you have inquiries about this product, please contact Customer Support:

ATTN: Customer Support

Email: [support@jadens.com](mailto:support@jadens.com)

物料编码:

物料名称:JD-21说明书

尺寸:77\*77mm

材质:128g哑粉纸

类型:折页

设计:黄彩凤

日期:2024.1.16

版本:1.0