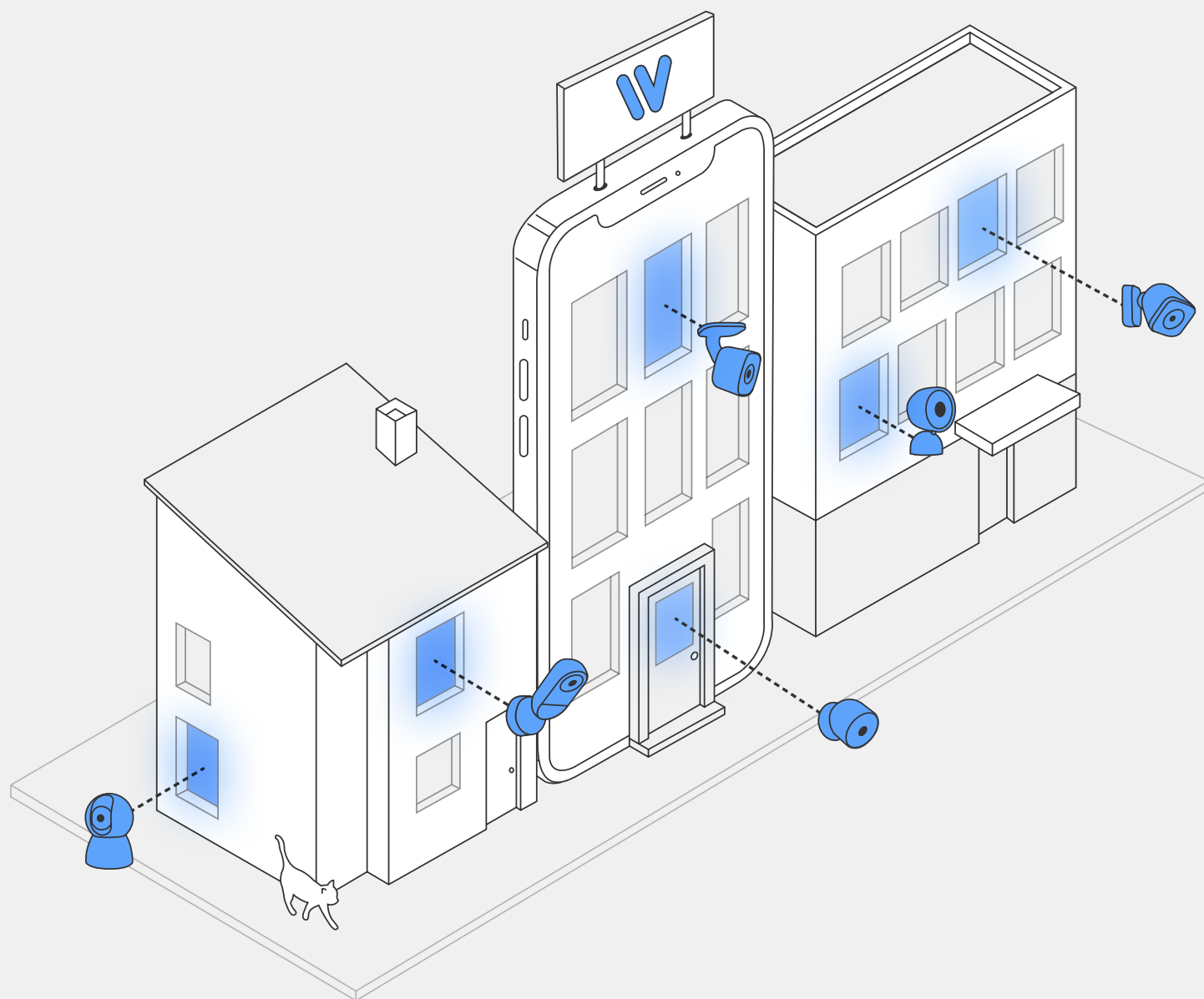




# *InstaVision*

Where [AI] Meets Scalability



## Home Security User Manual

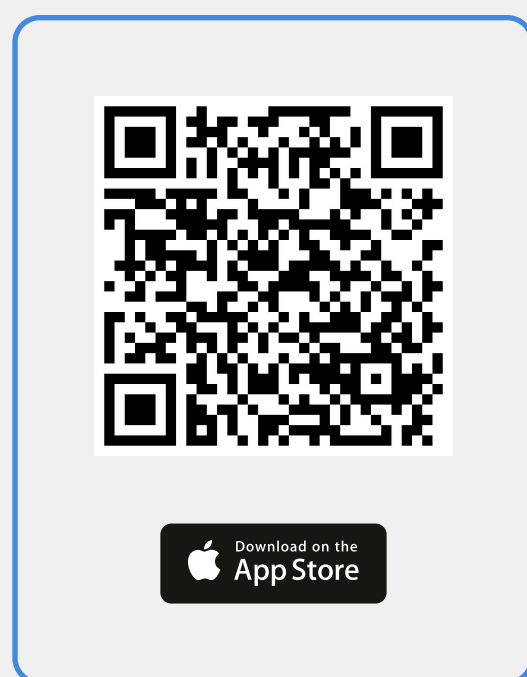
# Introduction

Welcome to the InstaVision Camera App. This manual will guide you through the various features of the app to ensure you get the most out of your security camera.

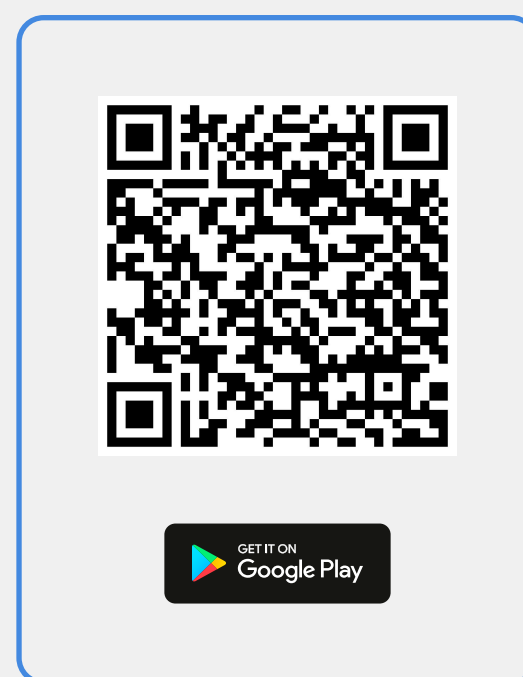
## Installation and Setup

- 1. Download and Install:** Download and install the InstaVision app by scanning the QR code for the Apple Store or Google Play Store.

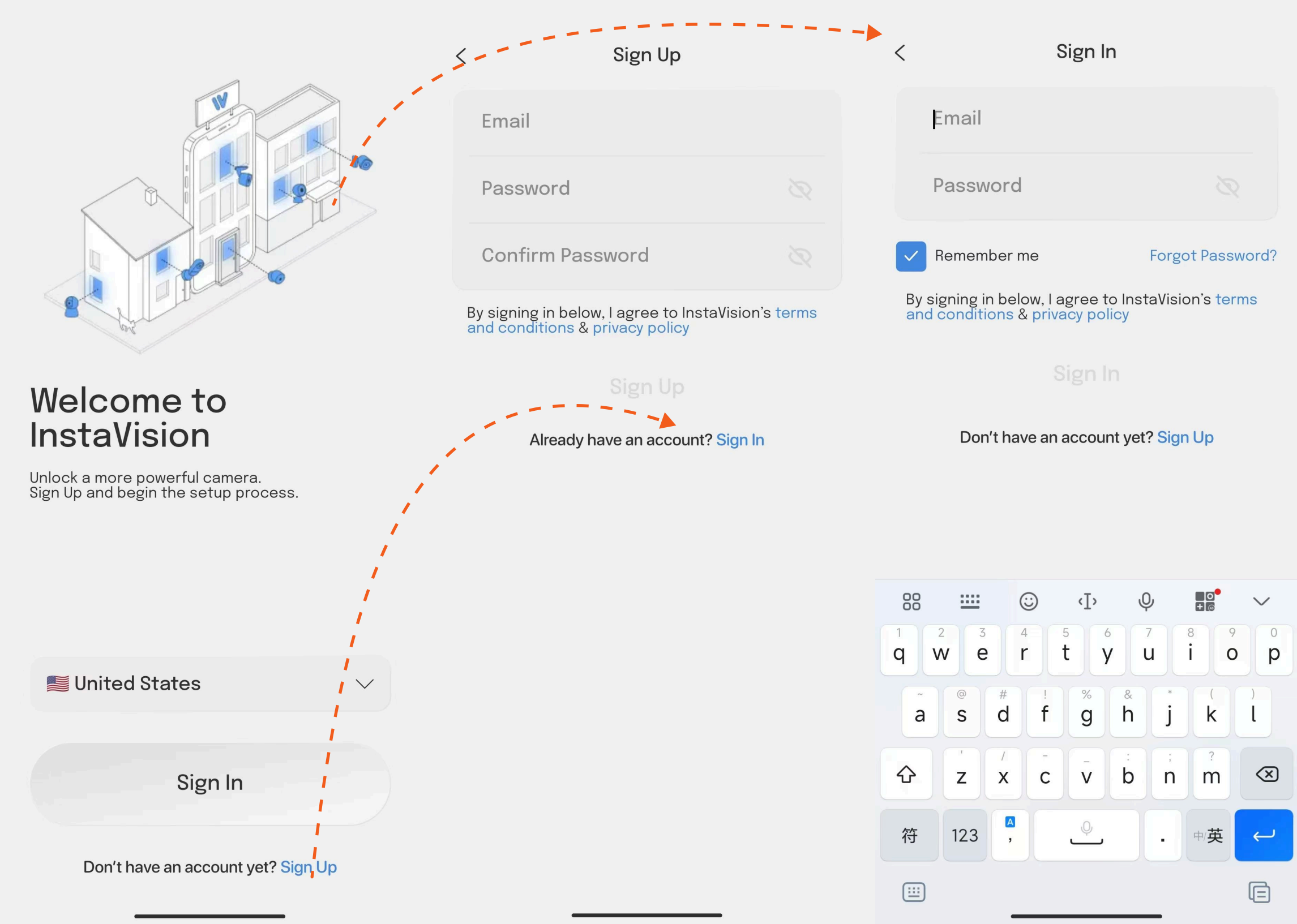
iPhone



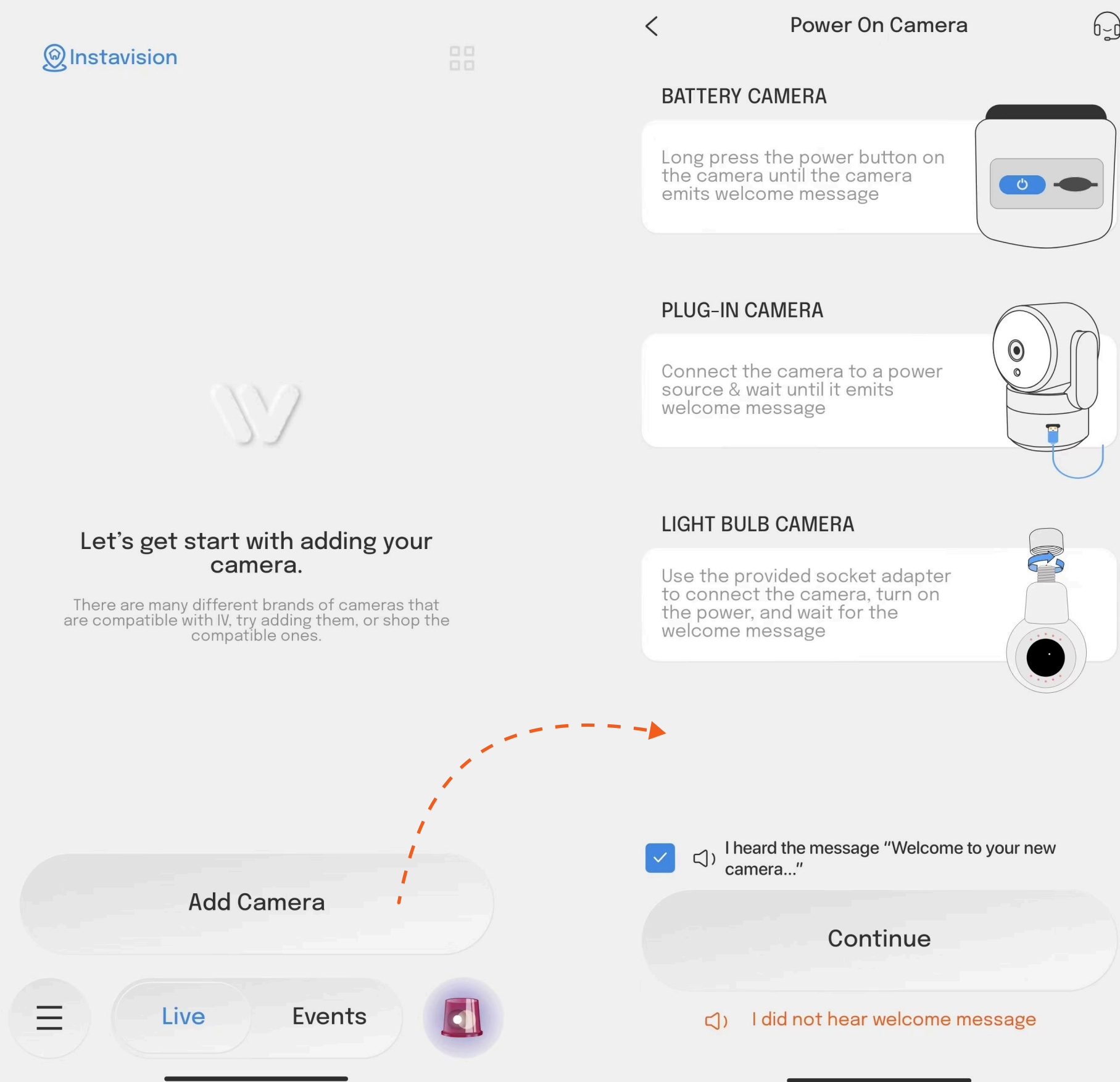
Android



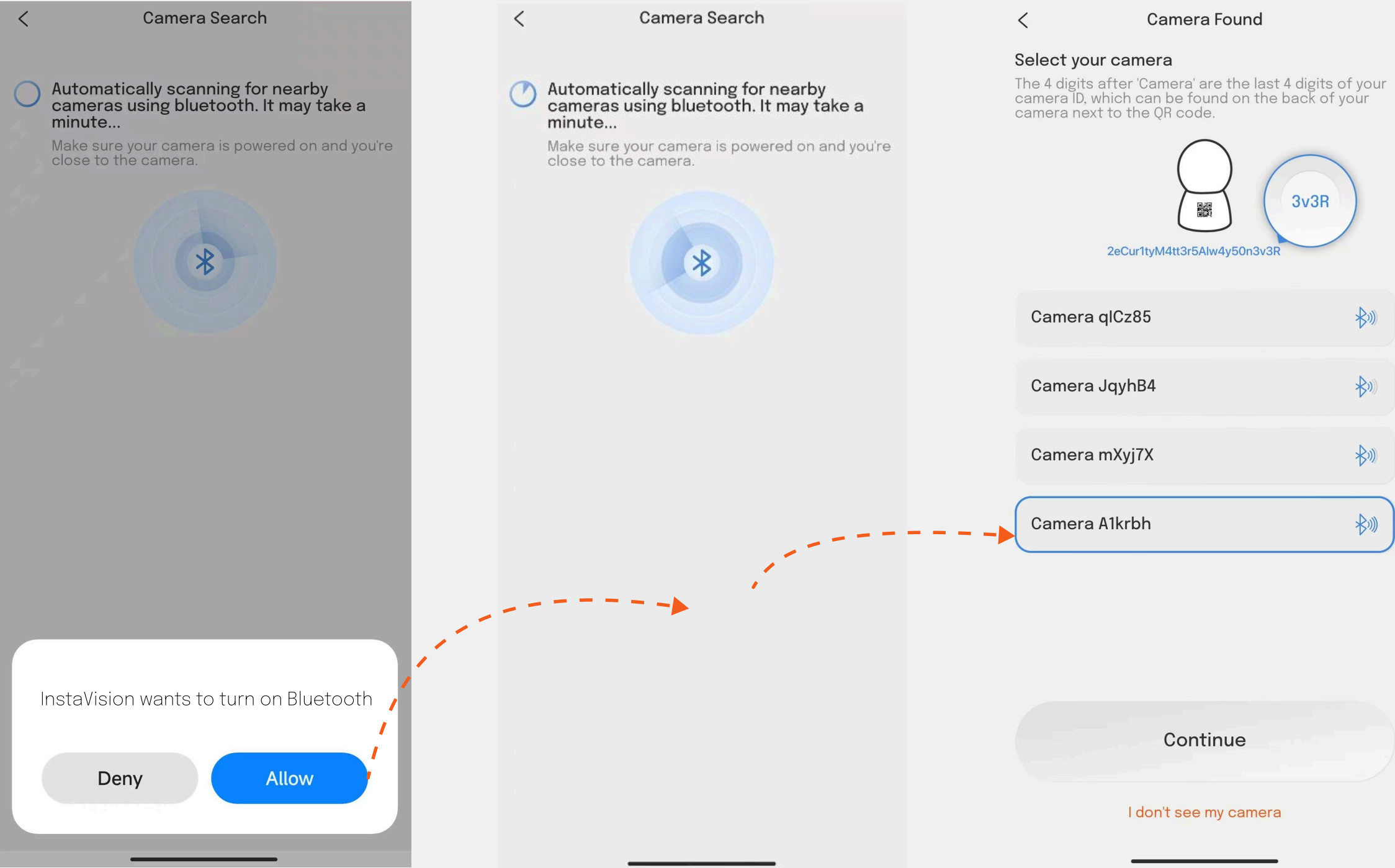
2. Account Registration: Open the app and register a new account or log in to an existing account.



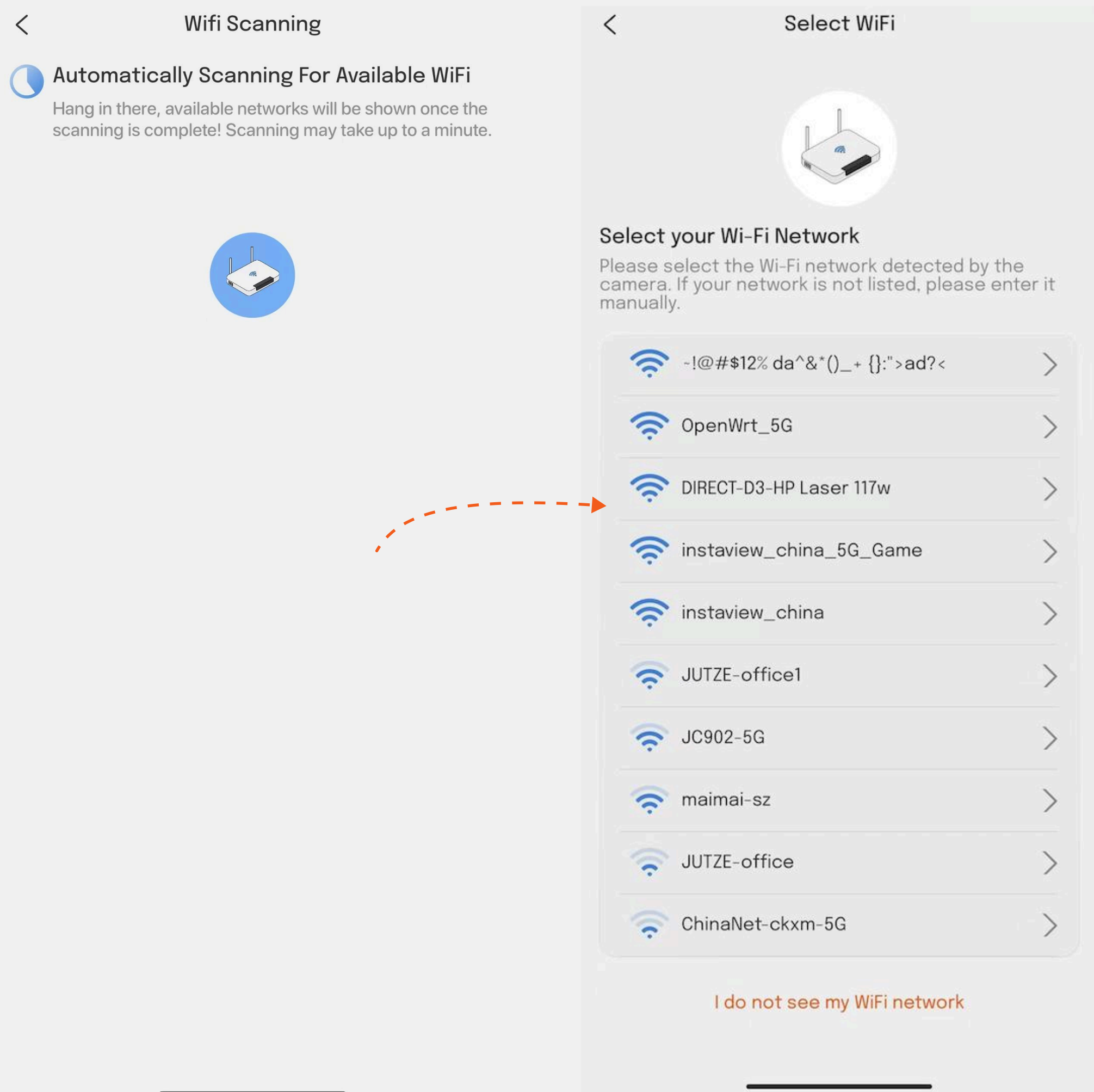
3. **Add Camera:** Navigate to the Home Page within the app. Locate and select "Add Camera" then go through preparation instructions to power on your camera properly.



**4. Bluetooth Access:** Follow the on-screen instructions to enable Bluetooth access, which is required for device discovery. Do not skip this step. Ensure Bluetooth access is enabled as instructed, allowing the app to discover the device via BLE.



**5. Connect to Wi-Fi:** Connect to Wi-Fi: The app will automatically scan for nearby 2.4 GHz & 5 GHz Wi-Fi routers. Choose your desired Wi-Fi network from the list provided. Please double-check your Camera's capability in terms of 2.4 GHz & 5 GHz.







6. **Input Wi-Fi Credentials:** Enter the password for your selected Wi-Fi network. Click "Next" to initiate connection. Wait a few seconds for the device to connect to the internet. You'll hear a notification sound from the device indicating successful progress.


<

Wi-Fi network



Manually enter the Wi-Fi name and password.




 instavision

 88888888|

Please pay attention to uppercase and lowercase letters when entering the password.

Next

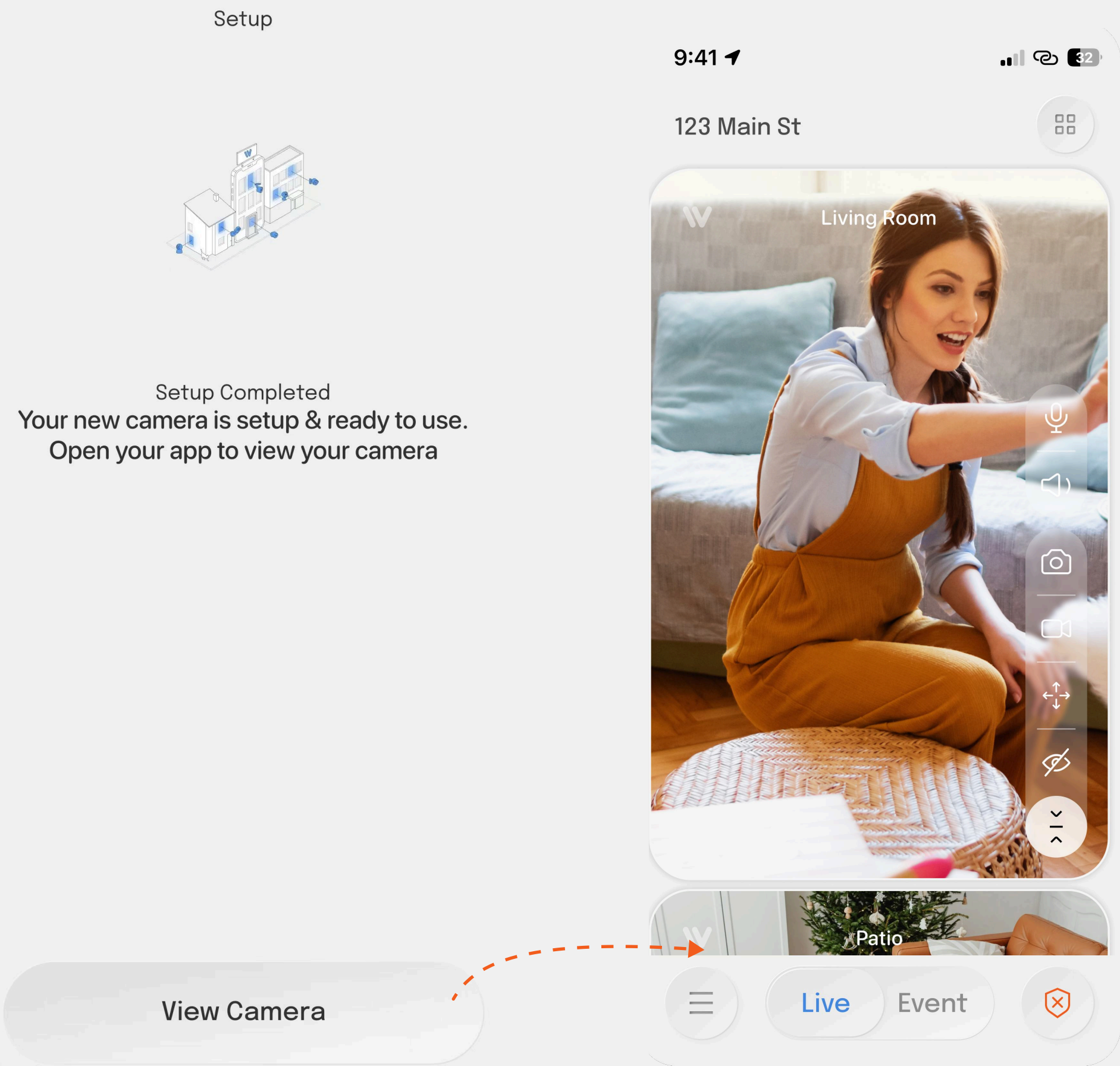
Camera connected



Camera is connected to the new WiFi network. Go back Home to check the live view.

Continue

7. **See Live View:** Upon completing the initial setup, access the main interface to view the live camera feed.



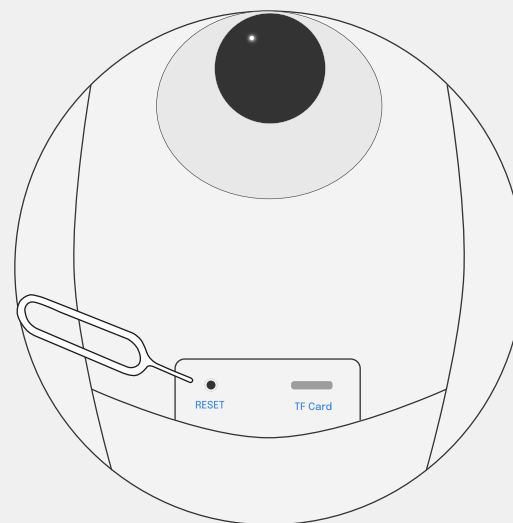
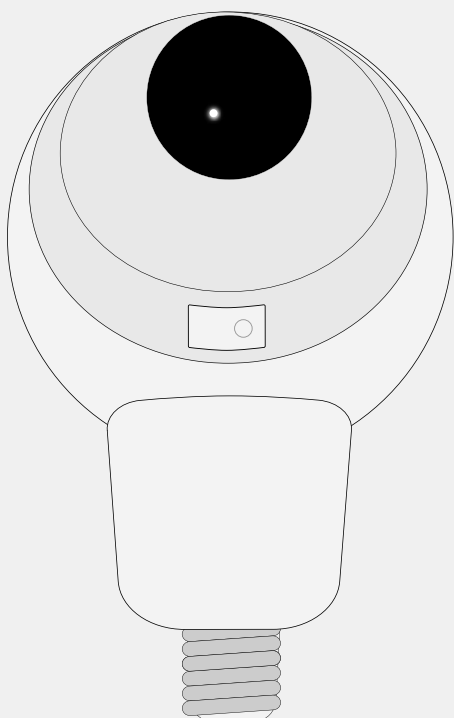
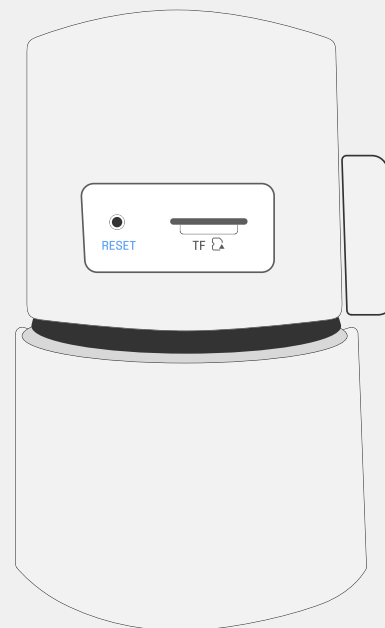
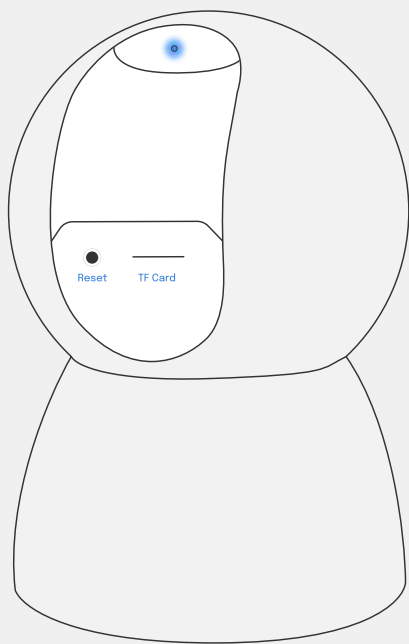


## Additional Instructions

As shown in the figure, it respectively indicates the positions of the reset camera and the TF card slot.

1: When you need to reconnect the camera to the network, you only need to press and hold the reset button to reset the device.

2: When you want to save the videos on the local TF card, gently insert the TF card into the slot.



# Customer Support

If you need further assistance, please contact our customer support team. You can send an email or call customer service through the "[Contact Us](#)" page within the app.

Thank you for choosing InstaVision App. We are committed to providing the best user experience and security protection. If you have any suggestions or feedback, please feel free to contact us.

For additional help, please contact our customer support team:

**Email: [support@instavision.ai](mailto:support@instavision.ai)**

**Phone: +1 (877) 916-3025**

## **FCC warning:**

Any Changes or modifications not expressly approved by the party responsible for compliance could void the user's authority to operate the equipment.

Note: This equipment has been tested and found to comply with the limits for a Class B digital device, pursuant to part 15 of the FCC Rules. These limits are designed to provide reasonable protection against harmful interference in a residential installation. This equipment generates uses and can radiate radio frequency energy and, if not installed and used in accordance with the instructions, may cause harmful interference to radio communications. However, there is no guarantee that interference will not occur in a particular installation. If this equipment does cause harmful interference to radio or television reception, which can be determined by turning the equipment off and on, the user is encouraged to try to correct the interference by one or more of the following measures:

- Reorient or relocate the receiving antenna.
- Increase the separation between the equipment and receiver.
- Connect the equipment into an outlet on a circuit different from that to which the receiver is connected.
- Consult the dealer or an experienced radio/TV technician for help.

This equipment complies with FCC radiation exposure limits set forth for an uncontrolled environment. This equipment should be installed and operated with minimum distance 20cm between the radiator & your body.

### **IC warning**

This device contains licence-exempt transmitter(s)/receiver(s) that comply with Innovation, Science and Economic

Development Canada's licence-exempt RSS(s). Operation is subject to the following two

1. This device may not cause interference.

2. This device must accept any interference, including interference that may cause undesired operation of the device.

- French:

L' émetteur/récepteur exempt de licence contenu dans le présent appareil est conforme aux CNR d' Innovation, Sciences et Développement économique Canada applicables aux appareils radio exempts de licence. L' exploitation est autorisée aux deux conditions suivantes :

1) L' appareil ne doit pas produire de brouillage;

2) L' appareil doit accepter tout brouillage radioélectrique subi, même si le brouillage est susceptible d' en compromettre le fonctionnement.

This equipment complies with IC RSS-102 radiation exposure limits set forth for an uncontrolled environment. This equipment should be installed and operated with minimum distance 20cm between the radiator & your body.

Cet équipement est conforme aux limites d'exposition aux rayonnements IC établies pour un environnement non contrôlé. Cet équipement doit être installé et utilisé avec un minimum de 20cm de distance entre la source de rayonnement et votre corps.

The distance between user and products should be no less than 20cm.

Operations in the 5.15-5.25GHz band are restricted to indoor usage only.

La distance entre l'utilisateur et les produits ne doit pas être inférieure à 20 cm

Les opérations dans la bande 5.15-5.25GHz sont limitées à une utilisation en intérieur uniquement