

Ordering Information
Available through GSA Schedule 84

Required Fields								Factory Defaults & Options				
CO - 100 - CY - 70 - KP - SPA - 626 - PD - C123 - RH - 13 - 049 - 10 - 025 - 1-3/4												
Series	Class	Chassis	Function	Reader	Lever Style	Finish	Lever Cylinder	Keying Type	Handing	Backset & Latch	Strike	Door Thickness
1	2	3	4	5	6	7	8	9	10	11	12	13

Selections Correspond With the Numbers Above
Standard options are indicated in bold. See price book for specific configuration options.

3 Chassis	
CY	Cylindrical
MS	Mortise
MD	Mortise Deadbolt
993R	Exit Trim – Rim/CVR
993S	Exit Trim – SVR
993M	Exit Trim – Mortise
993DT	Exit Dummy Trim
4 Function	
70	Classroom/Storeroom
50	Office
5 Reader	
KP	Keypad
6 Lever	
SPA	Sparta
RHO	Rhodes
ATH	Athens
TLR	Tubular
Available with knurled surface	

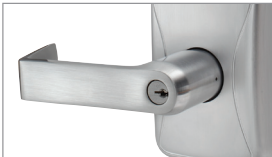
7 Finish	
626	Satin Chrome
605	Bright Brass
606	Satin Brass
612	Satin Bronze
619	Satin Nickel
625	Bright Chrome
643e	Aged Bronze
626AM	Satin Chrome Antimicrobial
8 Lever Cylinder Type	
PD	Schlage 6-pin Full Cylinder
See price book for other SFIC, FSIC and Less Cores options available. Compatible with Schlage, Sargent, Corbin, Medeco and Yale	
9 Keyway Type	
C123	Everest
See price book for other available keyway options including master keying	
10 Handing	
RH	Right Handed
RHR	Right Handed Reverse
LH	Left Handed
LHR	Left Handed Reverse
Field reversible	

11 Backset & Latch or Armor Front	
Cylindrical	
13-049	2-3/4" Backset, Deadlatch, Square Corner, 1-1/8" x 2-1/4"
Mortise	
09-663	Armor Front, 1-1/4" Wide, Square Corner
See price book for mortise deadbolt and other backset and latch options or armor front options	
12 Strike	
Cylindrical	
10-025	1-3/16 Lip, ANSI, No Box, 1-1/4" x 4-7/8"
Mortise	
10-072	1-3/16" Lip, 1-1/4" x 4-7/8" Square Corner, Box
See price book for other available strikes	
13 Door Thickness	
1-3/4"	
Other thicknesses available between 1-3/8" and 2-3/4"	
See price book for details	

Lever styles
Standard cylinders shown, SFIC and FSIC also available.



Sparta



Rhodes



Athens



Tubular

Warm tone finishes



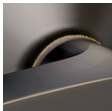
605
Bright Brass



606
Satin Brass

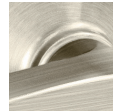


612
Satin Bronze



643e
Aged Bronze

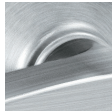
Cool tone finishes



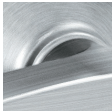
619
Satin Nickel



625
Bright Chrome



626
Satin Chrome



626AM
Satin Chrome Antimicrobial



CO-100
Offline Electronic Lock

The CO-Series is the ideal solution for customers seeking the added security and convenience of electronic access control without the cost or complexity of a fully networked system.

The CO-100 is an offline lock that is manually programmable. User rights for the CO-100 are stored on the lock. Unique PIN codes can be assigned to each user. This minimizes the number of mechanical keys issued which protects the integrity of your key system. PIN codes can be easily added or deleted at anytime right at the door.

The CO-100 from Schlage offers you many choices. Cylindrical, mortise, mortise deadbolt, and exit trim chassis options are available as well as a wide variety of finishes and levers to suite with your existing hardware.

Mechanical key override is standard and compatible with multiple cylinder types. The CO-Series is also compatible with many popular brands of exit devices.

The CO-Series has been tested the highest standards in the industry to ensure quality and reliability you have come to expect from Schlage. The CO-Series is ANSI/BHMA 156.25 Grade 1 certified and UL 294 listed.*



Images shown are not to scale.

Features

- Manually Programmable
- Up to 500 unique 3-6 digit PIN codes stored on the lock
- ANSI/BHMA Grade 1 certified and UL 294 listed*
- Classroom/Storeroom function and Office function available
- Chassis options include cylindrical, mortise, mortise deadbolt, and exit trim
- Compatible with most major brands of key systems and exit devices
- Normal, toggle, pass through, and freeze credential attributes available

*In process, all will be achieved prior to shipment.



Specifications

CO-100 Electronic Lock Specifications	
Users	500
Credential Verification Time (Keypad Only)	≤ 1 second
Visual/Audible Communications	Tri-colored LED's & audible indicators
Power Supply	4 AA batteries (standard off the shelf; included)
Battery Life	Up to 2 yrs with 4 AA batteries
Operating Temperature - Exterior	-31° to 151°F (-35° to 66°C)
Operating Temperature - Interior	32° to 120°F (0° to 49°C) due to battery
Operating Humidity	0 - 100% condensing
Certifications*	ANSI/BHMA A156.25 Grade 1, UL 294, UL 10 C, FCC Part 15, ADA

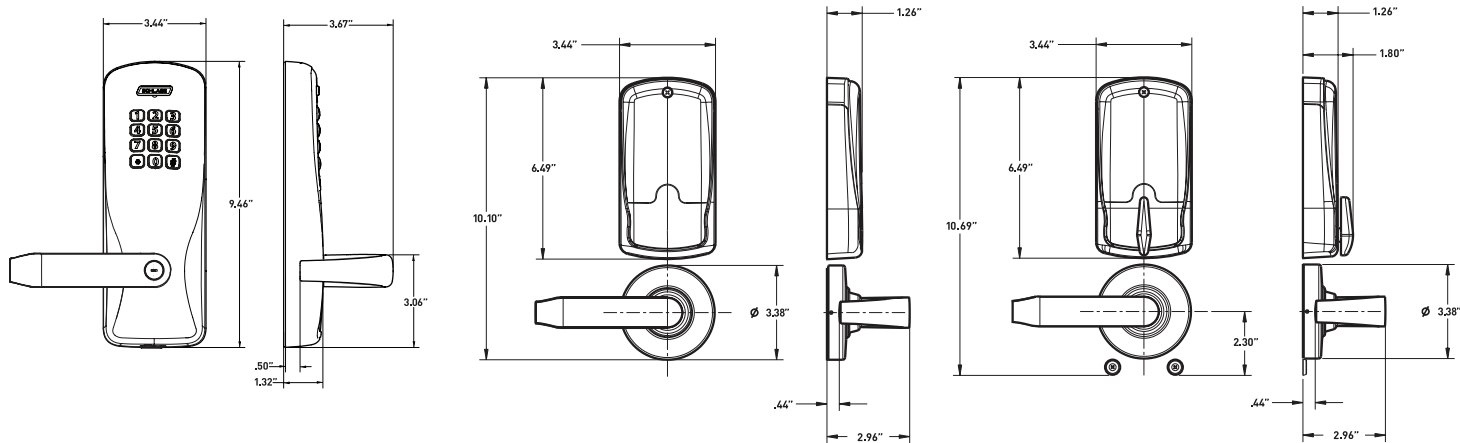
*In process, all will be achieved prior to shipment.

Dimensions

Exterior of the Lock

Interior of the Lock
Cylindrical

Mortise Deadbolt



Manually Programmable Options	
Credential Type	Function
Programming*	Used to enable programming of the lock. Does not unlock the lock.
Normal Use*	Unlocks the lock momentarily when in a normally secured state.
Toggle*	Changes the state of the lock unless in Freeze state.
Freeze*	Maintains the lock in current state until Freeze PIN is entered again.
Pass-through*	Unlocks a lock momentarily, regardless of state.

*Credentials can be 3-6 digits in length.

Functions

► Classroom/Storeroom

► Office

Note: Office function not available with Mortise Deadbolt option. To ensure safety, all functions always allow for free egress.

Standard Status Signals

► Battery Status - indicated by blinking lights

Mechanical Specifications		
Chassis	Cylindrical (Based on Schlage ND-Series)	Mortise (Based on Schlage L-Series)
Handing	Handed to Order, Field Reversible	
ANSI Standard	Meets or exceeds A156.25 and A156.2 Series 4000, Grade 1 strength and operational requirements	Meets or exceeds A156.25 and A156.13 Series 1000, Grade 1 operational and security
Door Thickness	1-3/4" standard, 1-3/8" to 2-3/4" optional (available in 1/8" increments)	
Backset	2-3/4" standard, 2-3/8", 3-3/4" and 5" optional	2-3/4" only
Latch Bolt	1/2" throw security latch standard 3/4" throw optional	3/4" throw with anti-friction tongue standard 1" throw deadbolt on Mortise Deadbolt option
Levers	Pressure cast zinc, plated to match finish symbols	Steel, plated to match finish symbols
Strike	ANSI curved lip strike 1-1/4" x 4-7/8" x 1-3/16" lip to center standard, optional strikes, lip lengths and ANSI strike box available	ANSI curved lip strike 1-1/4" x 4-7/8" x 1-3/16" lip to center with dust box standard, optional strikes lip lengths available

Compatibility

Exit Device Compatibility	Rim	SVR	CVR	Mortise
Von Duprin 98/99	✓	✓	✓	✓
Von Duprin 22/22F	✓	✓		
Falcon 25	✓	✓		
Corbin Russwin 5000	✓			
Precision 21	✓			
Yale 7000	✓			
Dorma 9300	✓			

Cylinder Compatibility	Full Size (key-in-lever 6 pin)	FSIC (6 pin)	SFIC (6 & 7 pin)
Schlage	● ▲	● ▲	● ▲
Falcon	● ▲		▲
Sargent		▲	▲
Corbin Russwin		▲	▲
Yale (also includes Medeco & Competitive OEM's)		▲	▲
● = with cylinder ▲ = less cylinder Note: See pricebook for specific configurations.			