



PRODUCT#BNQ-U167J

Power Energy Meter with Backlight



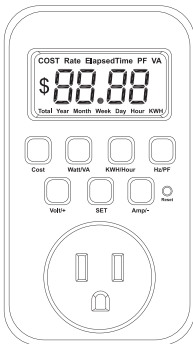
Intertek
3173845



Please keep this handbook



w.bn-link.com

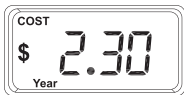


A. PRODUCT FUNCTION

Button Illustration:

1. Cost:

Press to check the electricity cost based on the latest unit price.
Press "Volt/+ " or "Amp/-" to check the electricity cost per unit time.
Total / Year / Month / Week / Day / Hour

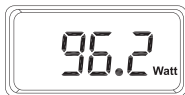


2.Watt/VA

Press once for load's effective power (Watt), twice for power volt-amperes (VA).

Watt: To 1 decimal places.

VA: To 1 decimal places.



When the value is greater than 1000, it is displayed to the nearest whole number.

3.KWH/Hour

Press once for kilowatt-hours (KWH), twice for elapsed power-on time.

KWH: To 2 decimal places when under 100;

To 1 decimal place when over 100;

As a whole number when over 1000.

Hour: If it exceeds 100 hours, minutes won't display, and ":" won't be shown.

It can show up to 9999 hours max.

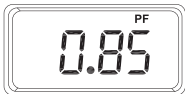


4.Hz/PF

Press once for power frequency (HZ), twice for load power factor (PF).

Hz: To 1 decimal places.

PF: To 2 decimal places.



5.Volt/+

Press to display the voltage (Volt), to 1 decimal places.



6.Amp/+

Press to display the current value (Amp), to 2 decimal places.



7.SET: Set the unit price rate

- 7.1. Hold the SET button for 3 seconds in any interface to enter the unit price setting. The previously set Rate value will be displayed. (The number flashes)



- 7.2 Volt/+ button to adjust upwards.

Amp/- button to adjust downwards.

Long-press for rapid changes.

- 7.3 After the setting is completed, press the SET button to save.

"SAVE" briefly appears, then exits after 0.5 seconds, returning to the previous interface.



8.Reset: Clear the accumulated data and restore factory settings.

8.1 Clear the accumulated data

Press and hold the “Reset” button for 3 seconds, the data of KWH, Elapsed Time, and Total COST will be cleared.



The interface will be displayed for 1 second, then return to the previous display interface.

8.2 Restore factory settings.

Press and hold the “SET” button and the “Reset” button for 3 seconds to restore the factory settings.

The KWH, Elapsed Time and Total COST data are cleared and the tariff data is restored to the default value.

B. SPECIFICATION

Rated Voltage: 125V, 60Hz

Max. Loading: 15A/1875W Resistive, 10A/1250W Tungsten, 1/2HP

Total Power Display: 0.0KWH-9999KWH

Total Cost Display: \$0.0-\$9999

Unit Cost Setting Range: \$00.01/KWH-\$99.99/KWH

Measurement Accuracy: 0.2%

Bill Monitoring: Hour/Day/Week/Month/Year/Total

C. PRODUCT PURPOSE

1. The product can accumulate and display: the cumulative load power consumption in kilowatt-hours (KWH), the cumulative energization time of the load, and the elapsed time.
2. The product may provide a single-rate electricity cost value display. It can show the total for Year, Month, Week, Day, and Hour.

D. WARNING

- Use a grounded outlet
- Follow local electrical codes
- For indoor use only
- Keep children away
- Unplug timer before cleaning
- Fully insert plug
- Do not use in wet locations
- Do not exceed electrical ratings

E. APPLICATIONS

- Lighting
- Heating systems
- Humidifiers
- Nebulizers
- Cooling systems
- Outdoor sprinklers
- Aquariums
- Ventilators

F. WARRANTY

30-Day Money-Back Guarantee:

If you are not satisfied with your purchase, you can request a refund within 30 days.

12-Month Warranty:

The device must have been used under proper technical conditions. Covers failures and defects not caused by human error.



Scan the QR code to activate your warranty and enjoy full customer support

G. CONTACT US

FOR ANY PROBLEMS DURING USE,
PLEASE CONTACT US AT
support@bn-link.com

BN-LINK INC.

Address: 11701 6th Street, Rancho Cucamonga, CA 91730

Customer Service Assistance: +1 909-592-1881

E-mail: support@bn-link.com

Web: <http://www.bn-link.com>

Working Hours: MON-FRI 09:00 AM-5:00 PM

Designed in California, Made in China