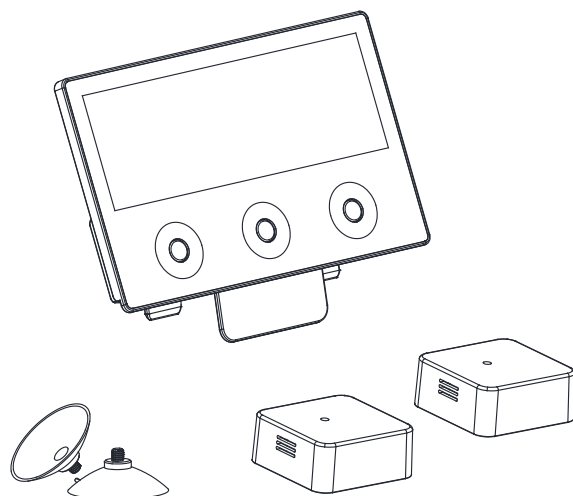


Wireless 3-Channel Thermo-Hygrometer Instruction Manual



Product Overview

This product is a wireless warning thermometer that can monitor three different areas at the same time. It can set three groups of upper and lower limits of temperature and humidity value, when the temperature and humidity in the area exceed the preset value, flashing warning will be given. Consumers can more intuitively observe the living environment of their pets.

Thank you for choosing REPTIZOO products. Before using this product, please read the manual carefully and follow the instructions.

Product List

1. Master thermo-hygrometer: 1pc
2. A Transmitter: 1pc
3. B transmitter: 1pc
4. Bracket: 1pc
5. Battery (CR2450): 2 pcs
6. Instruction manual: 1 pc

Product Feature

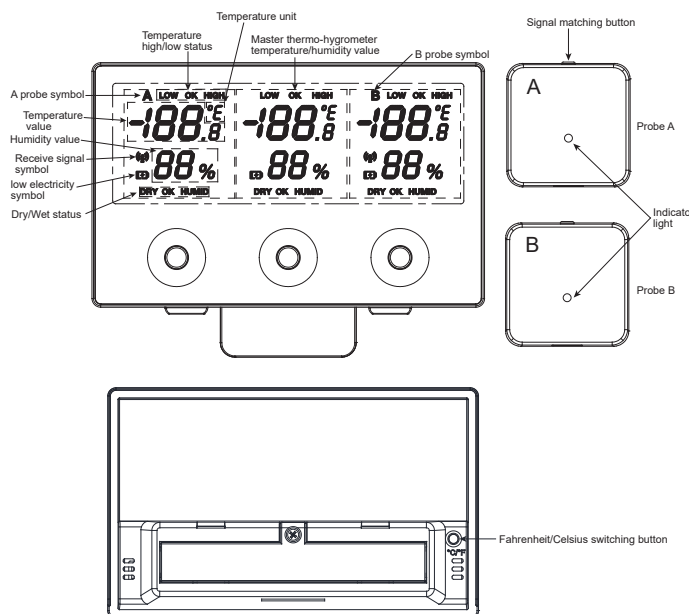
1. Large-size LCD display, which can directly display its working status.
2. Equipped with two wireless probes, combined with the master thermo-hygrometer to form a three-way control, with flexible and changeable use methods.
3. Setting parameter in multi-segment touch mode, simple and intuitive.
4. The master thermo-hygrometer can be placed on the desktop or on the top frame of the Reptizoo Knock-Down terrarium.

Technical Parameter

1. Parameter
Master thermo-hygrometer: DC 3V (AAA batteries*2 pcs)
Transmitter: DC 3V (CR2450 battery)
2. Size: 135*25*85mm

Setting Method

1. Display description of master thermo-hygrometer:

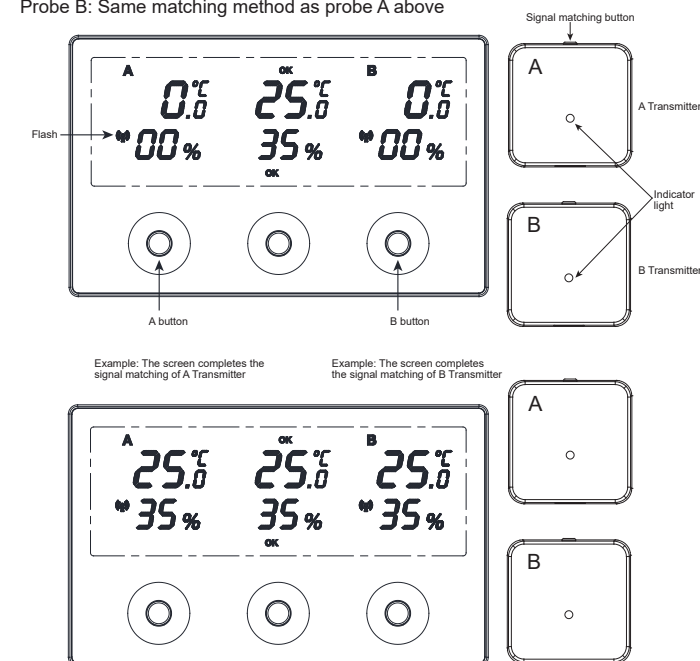


Thank you for choosing our company's products. In order to use this product correctly and ensure its service life, please read this instruction manual carefully before using it.

2. Signal matching operation

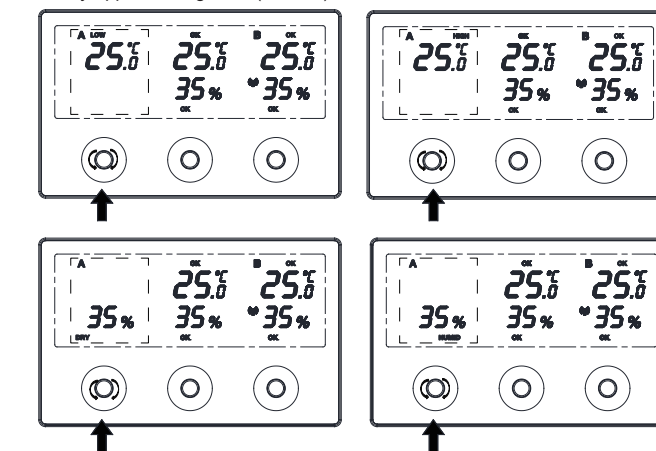
Probe A: Double-press the A button, the receiving signal symbol of the master thermo-hygrometer will keep flashing. At this time, press and hold the signal matching button of A transmitter for 3 seconds to start signal matching, until the receiving signal symbol is no longer flashes. To complete the signal matching.

Probe B: Same matching method as probe A above



3. Adjustment Parameter Description

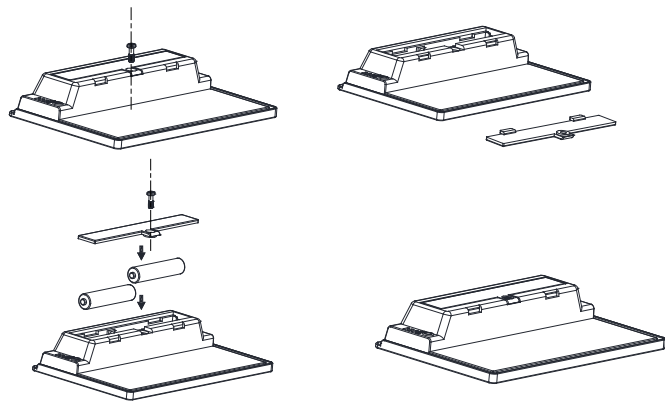
Probe A temperature/humidity upper and lower limiting value setting: press and hold the button A, the low symbol will display, and the temperature value will flash. At this time, touch and rotate clockwise/counterclockwise to adjust the temperature lower limiting value. After setting, click the button A and combine with touch rotation to set temperature upper limiting value(HIGH), humidity lower limiting value(DRY) and humidity upper limiting value(HUMID).



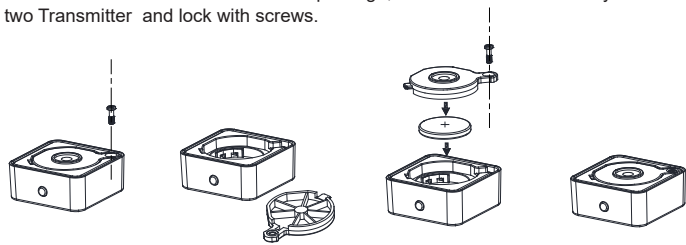
The setting of the temperature/humidity upper and lower limiting value of the probe B: Same matching method as probe A above

Installation and usage

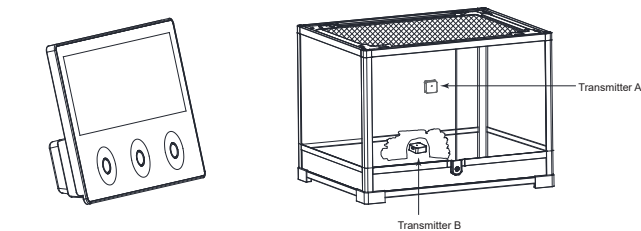
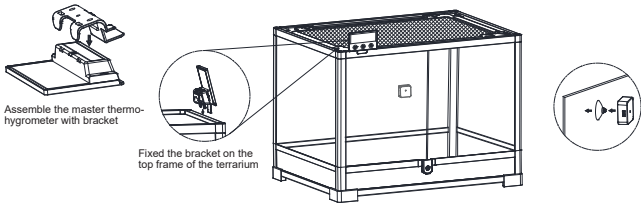
1. Take the main thermo-hygrometer out of the package, install two AAA batteries (AAA batteries need to be purchased by the user) into the master thermo-hygrometer and lock with screws.



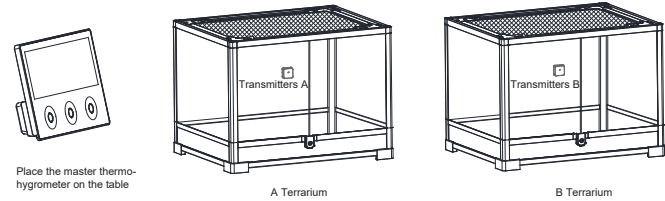
2. Take the Transmitter A/B out of the package, install the CR2450 battery into the two Transmitter and lock with screws.



3. According to the above setting method, match the transmitter and the master thermo-hygrometer, and set the upper and lower limiting value of temperature/humidity.
4. Usage method 1: Fixed the master thermo-hygrometer on the top frame of the Knock-Down terrarium with a bracket.



5. Usage method 2: Place the master thermo-hygrometer on the table, and transmitters A and B are placed in different terrariums.



Safety and Maintenance

1. This product is not suitable for use by persons who lack normal behavior, nervous or mental disorders, and lack experience or relevant knowledge, including children. The above-mentioned persons must use this product under the supervision and instruction of experienced adults and operate under safe conditions. Children should be closely supervised to ensure that they are not playing with the product.
2. All accessories of this product cannot be used for other purposes, which may cause unsafe factors
3. This product is for indoor use only. Do not install or store this product in the open air or where the temperature is below 0 C or above 30 C .
4. The product is not waterproof, please keep away from water or immerse in water.
5. Please wipe the surface with a soft dry cloth after power off, and do not use any chemical solvents.

Important Safety Information

- 【Warning】** Failure to follow these safety instructions may result in product damage and personal safety.
- 【Usage】** Please read all safety information below before using the product.

Dongguan ETAN Pet Supplies Co.,Ltd.
No.3 JinXingEr Road, Qingxi Town,
Dongguan City, Guangdong Province,
China. 523655
Tel: 86- 769- 87841199
Tmall: reptizoo.tmall.com
Overseas Sales: postmaster@repti-zoo.com
China Sales: market_one@repti-zoo.com
www.repti-zoo.com

