



RocketM Series Quick Start Guide

Package Contents



Rocket



Metal Strap



PoE Adapter (24V, 1A) (24V, 0.5A RocketM2 only)



Power Cord

Installation Requirements

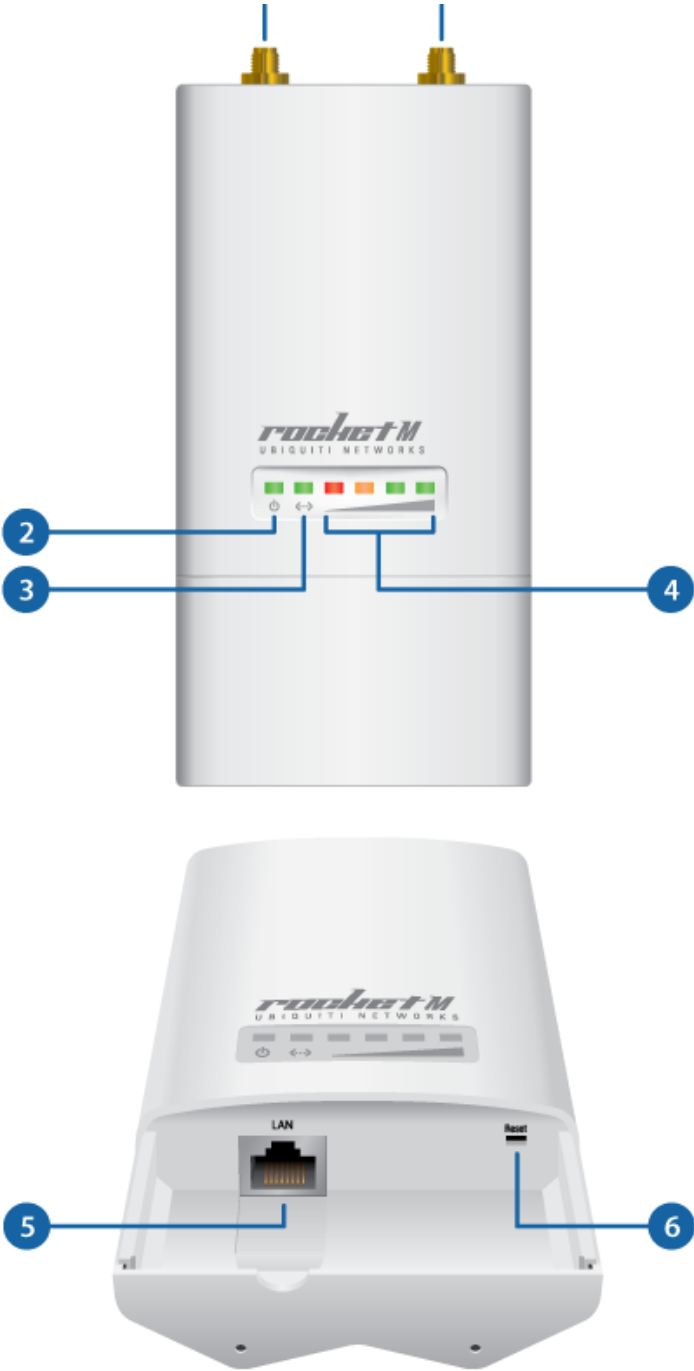
- Shielded Category 5 (or above) cabling should be used for all wired Ethernet connections and should be grounded through the AC ground of the PoE.

We recommend that you protect your networks from harmful outdoor environments and destructive ESD events with industrial-grade, shielded Ethernet cable from Ubiquiti. For more details, visit ui.com/toughcable

Hardware Overview



RocketM Series Quick Start Guide

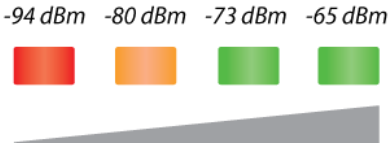


1 RP-SMA Antenna Connectors
Used to attach RF cables (not included).
2 Power LED
The Power LED will light green when the device is connected to a power source.
3 Ethernet LED
The Ethernet LED will light steady green when an active Ethernet connection is made and flash when there is activity.
4 Signal LEDs



RocketM Series Quick Start Guide

the Advanced tab under Signal LED Thresholds. The default values are shown below.



5 LAN

The 10/100 Ethernet port is used to connect the power and should be connected to the LAN and DHCP server.

6 Reset Button

To reset to factory defaults, press and hold the Reset button for more than 10 seconds while the device is already powered on.

Hardware Installation

The Rocket is designed to mount directly onto a Ubiquiti airMAX RocketDish™ antenna for Point-to-Point use or an airMAX Sector antenna for Point-to-MultiPoint use.

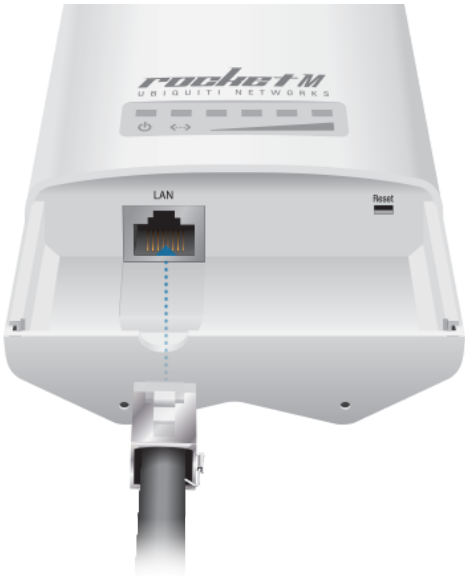
1.



2.



RocketM Series Quick Start Guide



3.



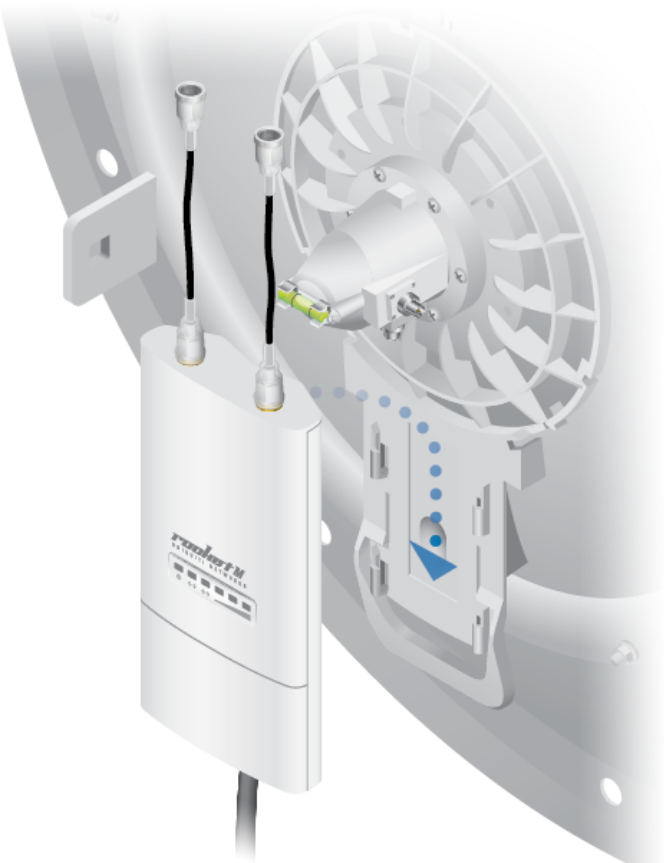
4.



RocketM Series Quick Start Guide



5.





RocketM Series Quick Start Guide



6.



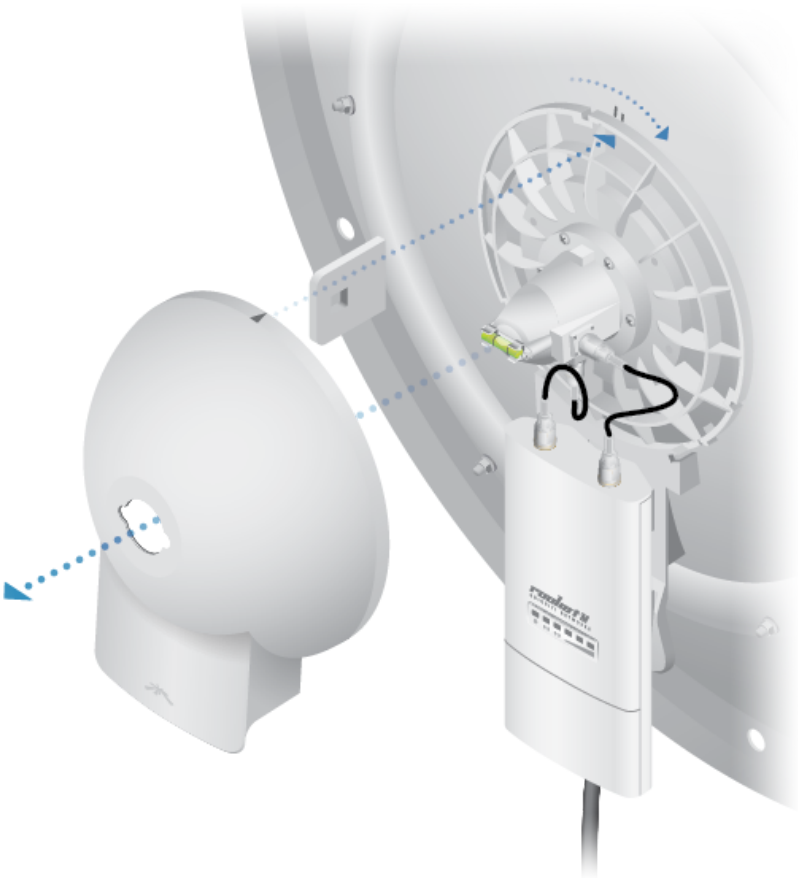
OR



RocketM Series Quick Start Guide



7.



OR

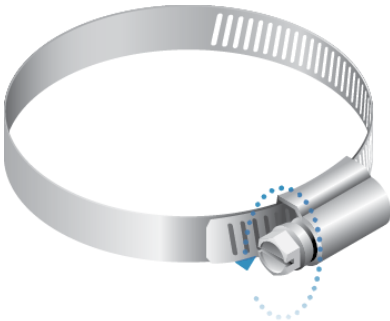


RocketM Series Quick Start Guide

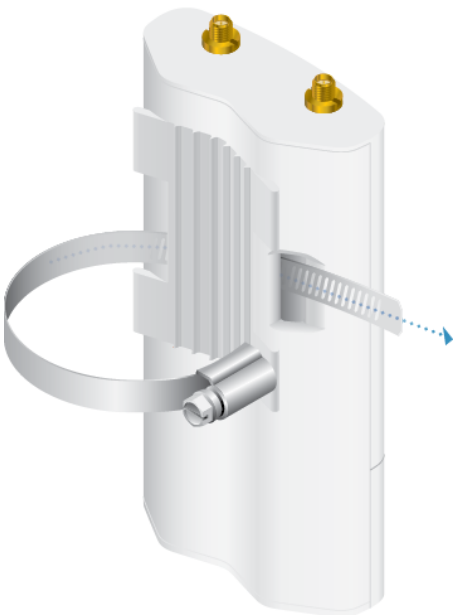


Pole-Mounting

1.



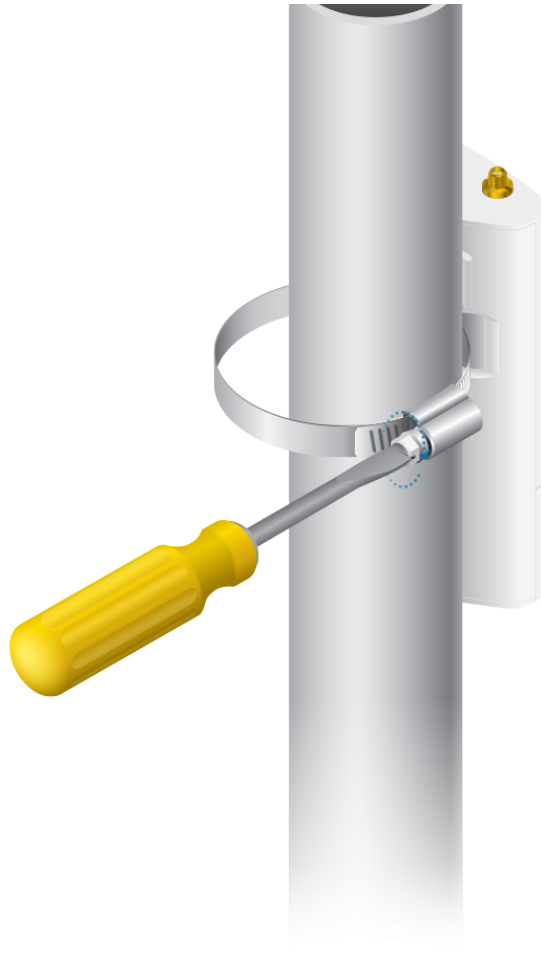
2.



3.



RocketM Series Quick Start Guide



Connecting Power

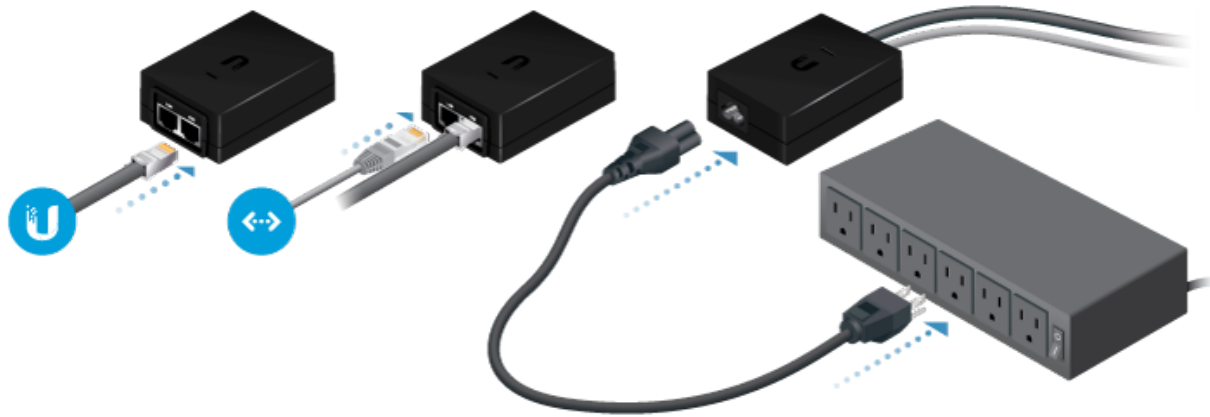


WARNING: The switch port must comply with the power specifications listed in this Quick Start Guide.





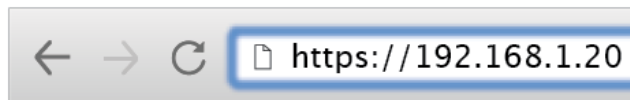
RocketM Series Quick Start Guide



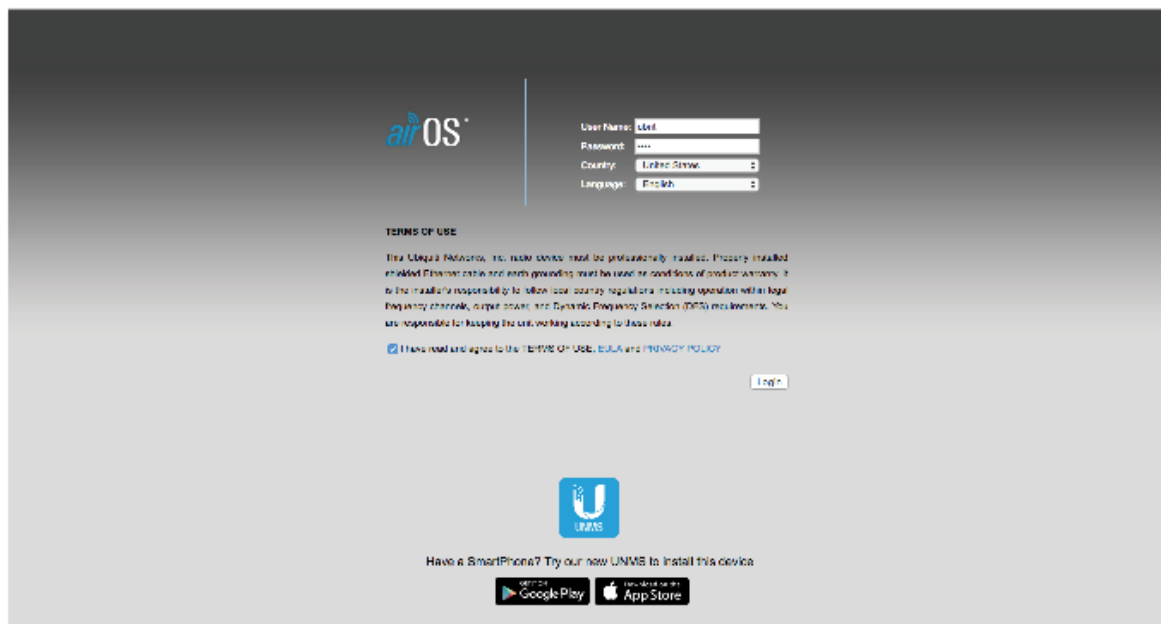
Accessing airOS

Verify connectivity in the airOS Configuration Interface.

1. Make sure that your host system is connected via Ethernet to the device.
2. Configure the Ethernet adapter on your host system with a static IP address on the 192.168.1.x subnet.
3. Launch your web browser and type `https://192.168.1.20` in the address field. Press enter (PC) or return (Mac).



4. Enter `ubnt` in the Username and Password fields. Select your Country and Language. You must agree to the Terms of Use to use the product. Click Login.

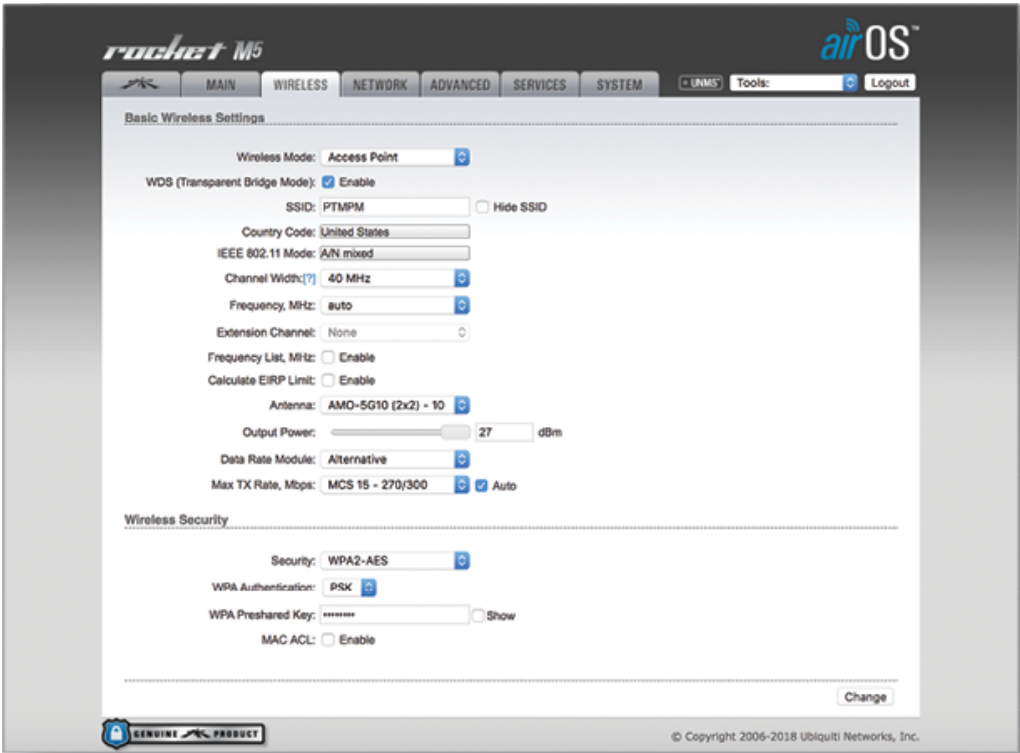


The airOS Configuration Interface will appear, allowing you to customize your settings as needed. For details, refer to the User Guide available at ui.com/download/airmax



Installer Compliance Responsibility

Devices must be professionally installed and it is the professional installer’s responsibility to make sure the device is operated within local country regulatory requirements.



Antenna

Select your antenna from the list. If Calculate EIRP Limit is enabled, transmit output power is automatically adjusted to comply with the regulations of the applicable country. Note the requirements and antenna types listed below.

Cable Loss (When applicable)

Enter the cable loss in dB. Output power is adjusted to compensate for loss between the radio and the antenna.

Certified Antenna Types

This radio transmitter FCC ID: SWX-R5M / IC : 6545A-R5M or FCC ID: SWX-RM2WP / IC : 6545A-RM2WP or FCC ID: SWX-M900 / IC : 6545A-M900 has been approved by FCC / ISCED Canada to operate with the antenna types listed below with the maximum permissible gain for each antenna type indicated. Antenna types not included in this list or having a gain greater than the maximum gain indicated for that type, are strictly prohibited for use with this device.

Antenna	Frequency	Gain
Omni	2.4 GHz	13 dBi



RocketM Series Quick Start Guide

	5 GHz	20 dBi
Dish	2.4 GHz 5 GHz	24 dBi 30 dBi
-	900 MHz	13 dBi

Specifications

RocketM	
Dimensions	160 x 80 x 30 mm (6.30 x 3.15 x 1.18")
Weight	500 g (1.1 lb)
Port	(1) 10/100 Ethernet Port
RF Connectors	(2) RP-SMA (Waterproof)
Enclosure	Outdoor UV Stabilized Plastic
Max. Power Consumption	
RocketM900/2/3/365	6.5W
RocketM5/6	8W
Power Supply	24V, 1A PoE Adapter (Included) 24V, 0.5A (RocketM2 only)
Power Method	Passive PoE (Pairs 4, 5+; 7, 8 Return)
Certifications	CE, FCC, IC
Operating Temperature	-30 to 75° C (-22 to 167° F)
Operating Humidity	5 to 95% Noncondensing
Shock and Vibration	ETSI300-019-1.4

RocketM900/M2/M3/M365/M6 Operating Frequency (MHz)	
RocketM900	902 - 928
RocketM2	2402 - 2462
RocketM3	3370 - 3730*
RocketM365	3650 - 3675
RocketM6	5955 - 6400

** RocketM3 not supported in the USA.*

RocketM5 Operating Frequency (MHz)		
Worldwide		5150 - 5875
USA	U-NII-1	5150 - 5250



RocketM Series Quick Start Guide

	U-NII-2C	5470 - 5725
	U-NII-3	5725 - 5850
IC	5470 - 5600, 5650 - 5725, 5725 - 5850	

Safety Notices

- 1. Read, follow, and keep these instructions.
- 2. Heed all warnings.
- 3. Only use attachments/accessories specified by the manufacturer.



WARNING: Do not use this product in location that can be submerged by water.



WARNING: Avoid using this product during an electrical storm. There may be a remote risk of electric shock from lightning.

Electrical Safety Information

- 1. Compliance is required with respect to voltage, frequency, and current requirements indicated on the manufacturer's label. Connection to a different power source than those specified may result in improper operation, damage to the equipment or pose a fire hazard if the limitations are not followed.
- 2. There are no operator serviceable parts inside this equipment. Service should be provided only by a qualified service technician.
- 3. This equipment is provided with a detachable power cord which has an integral safety ground wire intended for connection to a grounded safety outlet.
 - a. Do not substitute the power cord with one that is not the provided approved type. Never use an adapter plug to connect to a 2-wire outlet as this will defeat the continuity of the grounding wire.
 - b. The equipment requires the use of the ground wire as a part of the safety certification, modification or misuse can provide a shock hazard that can result in serious injury or death.
 - c. Contact a qualified electrician or the manufacturer if there are questions about the installation prior to connecting the equipment.
 - d. Protective earthing is provided by Listed AC adapter. Building installation shall provide appropriate short-circuit backup protection.
 - e. Protective bonding must be installed in accordance with local national wiring rules and regulations.

Limited Warranty

ui.com/support/warranty

The limited warranty requires the use of arbitration to resolve disputes on an individual basis, and, where applicable, specify arbitration instead of jury trials or class actions.

Compliance



RocketM Series Quick Start Guide

Changes or modifications not expressly approved by the party responsible for compliance could void the user's authority to operate the equipment.

This device complies with Part 15 of the FCC Rules. Operation is subject to the following two conditions.

1. This device may not cause harmful interference, and
2. This device must accept any interference received, including interference that may cause undesired operation.

This equipment has been tested and found to comply with the limits for a Class A digital device, pursuant to part 15 of the FCC Rules. These limits are designed to provide reasonable protection against harmful interference when the equipment is operated in a commercial environment. This equipment generates, uses, and can radiate radio frequency energy and, if not installed and used in accordance with the instruction manual, may cause harmful interference to radio communications. Operations of this equipment in a residential area is likely to cause harmful interference in which case the user will be required to correct the interference at his own expense.

This radio transmitter has been approved by FCC.

ISED Canada

CAN ICES-3(A)/NMB-3(A)

This device complies with ISED Canada licence-exempt RSS standard(s). Operation is subject to the following two conditions:

1. This device may not cause interference, and
2. This device must accept any interference, including interference that may cause undesired operation of the device.

This radio transmitter has been approved by ISED Canada.

The device for operation in the band 5150-5250 MHz is only for indoor use to reduce the potential for harmful interference to co-channel mobile satellite systems.

CAN ICES-3(A)/NMB-3(A)

Le présent appareil est conforme aux CNR d'ISDE Canada applicables aux appareils radio exempts de licence. L'exploitation est autorisée aux deux conditions suivantes :

1. l'appareil ne doit pas produire de brouillage;
2. l'appareil doit accepter tout brouillage radioélectrique subi, même si le brouillage est susceptible d'en compromettre le fonctionnement.

Le présent émetteur radio a été approuvé par ISDE Canada.

Les dispositifs fonctionnant dans la bande 5150-5250 MHz sont réservés uniquement pour une utilisation à l'intérieur afin de réduire les risques de brouillage préjudiciable aux systèmes de satellites mobiles utilisant les mêmes canaux.

IMPORTANT NOTE

Radiation Exposure Statement

- This equipment complies with radiation exposure limits set forth for an uncontrolled environment.
- This equipment should be installed and operated with minimum distance 75 cm (RocketM2), 23 cm (RocketM9), or 252 cm (RocketM5) between the radiator and your body.



AVIS IMPORTANT

Déclaration sur l'exposition aux rayonnements

- Cet équipement est conforme aux limites prévues pour l'exposition aux rayonnements dans un environnement non contrôlé.
- Lors de l'installation et de la mise en fonctionnement de l'équipement, assurez-vous qu'il y ait une distance minimale de 75 cm (RocketM2), 23 cm (RocketM9), ou 252 cm (RocketM5) entre l'élément rayonnant et vous.
- Cet émetteur ne doit être installé à proximité d'aucune autre antenne ni d'aucun autre émetteur, et ne doit être utilisé conjointement à aucun autre de ces appareils.

Australia and New Zealand



Warning: This equipment is compliant with Class A of CISPR 32. In a residential environment this equipment may cause radio interference.

Brazil



Nota: Este equipamento não tem direito à proteção contra interferência prejudicial e não pode causar interferência em sistemas devidamente autorizados.

Japan



® 003WWA11252

CE Marking

CE marking on this product represents the product is in compliance with all directives that are applicable to it.



Country List



AT	BE	BG	CY	CZ	DE	DK	EE	EL	ES	FI	FR	HR	HU
IE	IT	LV	LT	LU	MT	NL	PL	PT	RO	SE	SI	SK	UK

BFWA (Broadband Fixed Wireless Access) members noted in blue



Note: This device meets Max. TX power limit per ETSI regulations.

The following apply to products that operate in the 5 GHz frequency range:



RocketM Series Quick Start Guide



Note: All countries listed may operate at 30 dBm. BFWA member states may operate at 36 dBm.



Note: Operation in the 5.8 GHz frequency band is prohibited in BFWA member states. Other countries listed may use the 5.8 GHz frequency band.

WEEE Compliance Statement

Declaration of Conformity

Online Resources



© 2020 Ubiquiti Inc. All rights reserved.