

# Tuya Smart Quick Start Guide



A **theben** Group Company



WF10COMIP



FSTWIFITUTGV



LEDPROCAM



WFLGU10

[www.timeguard.com](http://www.timeguard.com)

For our complete Wi-Fi Product Range.

Victory Park, 400 Edgware Road, London NW2 6ND  
Sales Office Direct Line: 020 8452 1112  
Email: [csc@timeguard.com](mailto:csc@timeguard.com)



# Contents

Page 3: What is Tuya Smart?

Page 4: Profile / Home Management

Page 5: Adding a device

Page 6: Adding a device EZ mode

Page 7: Adding a device / Configuration

Page 8: Google / Alexa Services

Page 9: Product Grouping

Page 10: Smart Automation / Tap-to-Run

Page 14: Sharing a device

Page 16: Message Center / Notifications

Page 17: Notes & Support



# What is Tuya Smart?



Tuya Smart is a IOT platform with more than 5000 manufacturing partners worldwide. With solutions ranging from DIY to commercial installations. The platform supports a comprehensive variety of products which can be mixed and combined to support your specific purpose. Some of the product categories that can be found to work with Tuya can be seen below.



**Domestic Appliances**



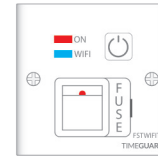
**Small Appliances**



**Kitchen Appliances**



**Pet Machines**



**Electrical Applications**



**Lighting**



**Sensors**



**Energy Monitoring**



**Entertainment**



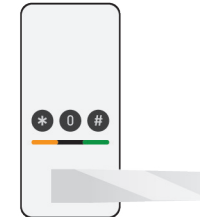
**Outdoor**



**Cleaning Robots**



**Camera Equipment**



**Smart Locks**

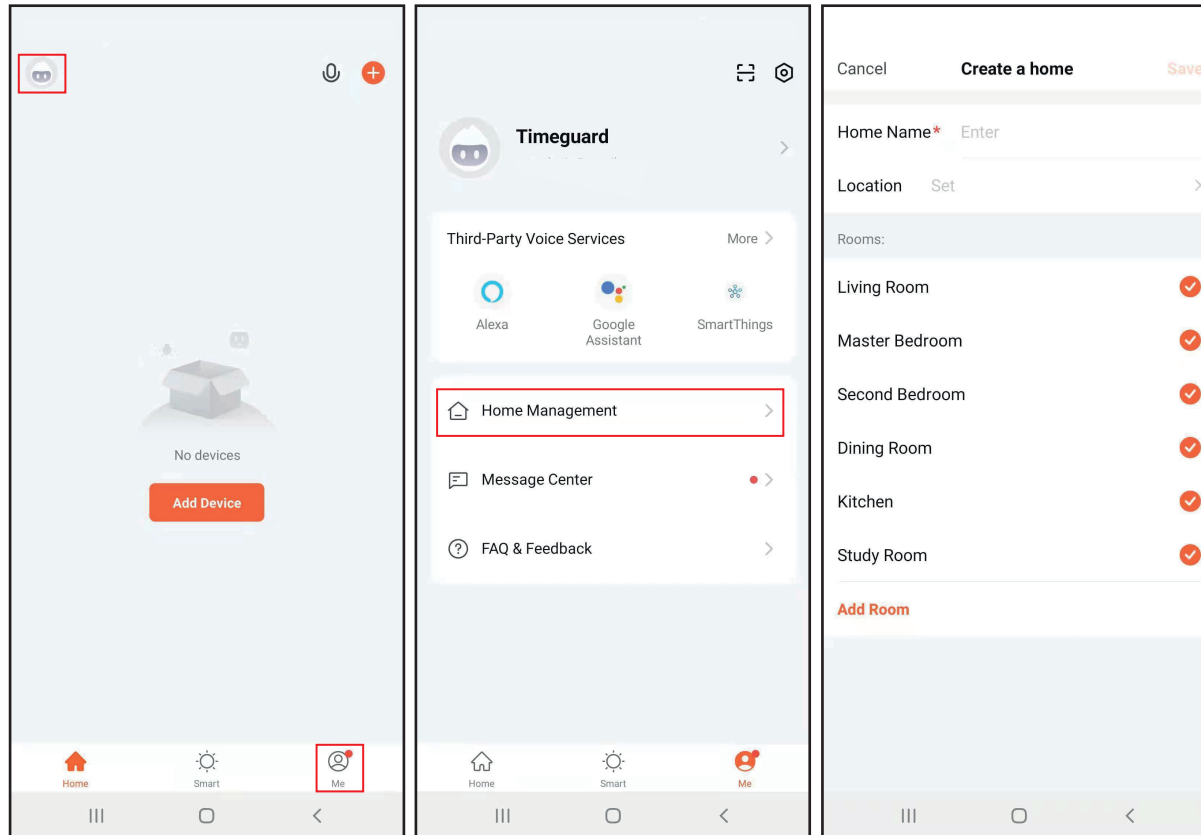


**Smoke/Co2 Detectors**

Tuya Smart devices can be controlled via the use of Wi-Fi on site and even remotely, with some products having the option to support bluetooth connectivity when in range if your Wi-Fi connection is down. Devices can broadcast messages to the users when a devices state has changed or when a device is triggered based on a particular event or other metrics such as indoor and outdoor temperature and the time of day etc. The application is supported on both iOS and Android and can be downloaded using the QR code below.



# Profile / Home Management



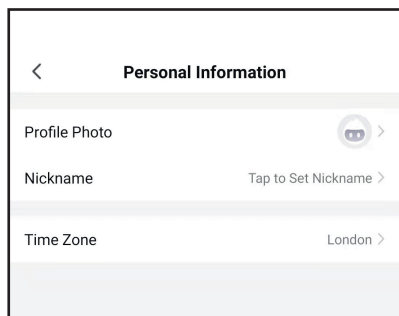
When a user has setup an account on the application, they will see the home page where the devices are listed (once added). Their user profile can be accessed from the top left corner.

From here you can setup a nickname and timezone, subject to the users location.

Once complete press the back button and tap on “me” and then “Home Managment” where you can begin to setup the house name and rooms required for your property where your smart devices will be located. There will also be an option to join a home that has already been setup by another user. Once connected you will be able to access these devices.

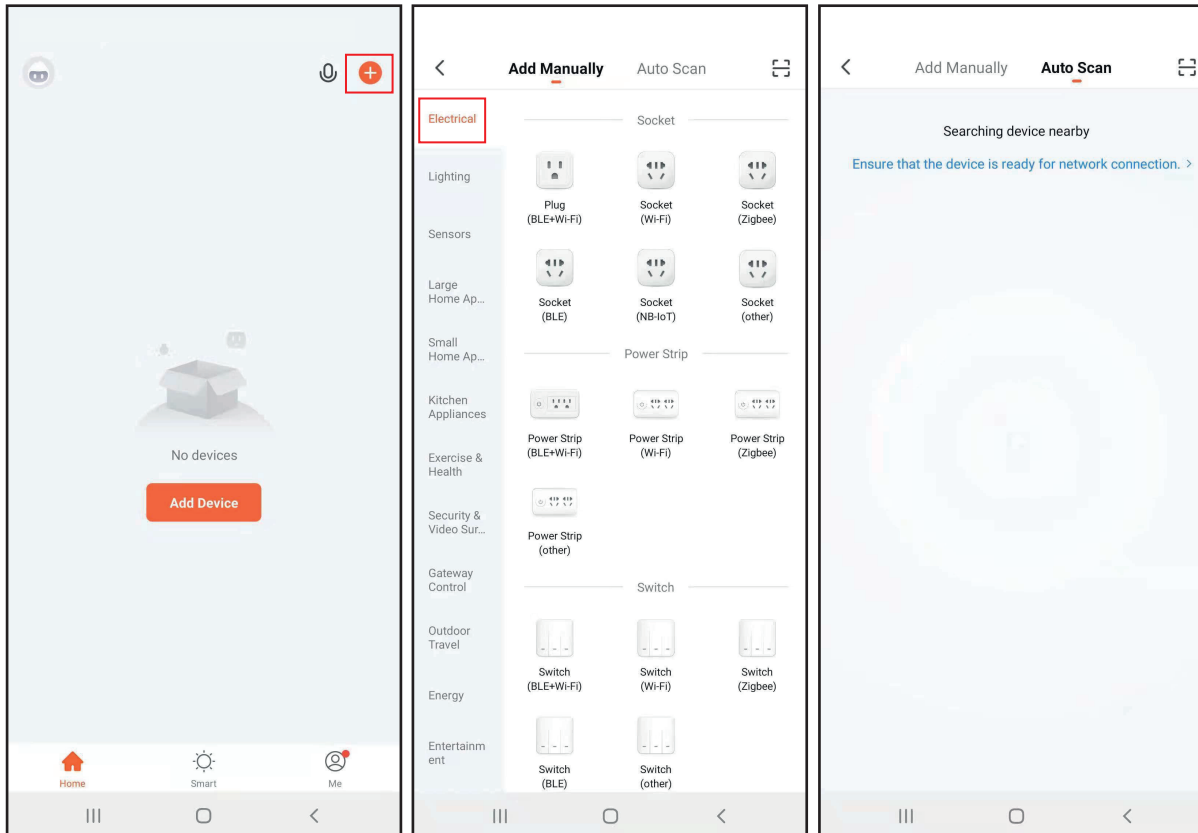
Select the “Create a home” option to assign rooms of your choice to your property. Tap “Save” to complete and confirm the selection.

Note that you can also send out invitations to other Tuya members to get them to join your home rather than sharing a single account for simultaneous login which is not advised.





# Adding a device



To add a device to your account press the “+” button on the home screen of the app, this will direct you to the device category screen where you can select the appropriate category of product and then device type for starting the pairing process.

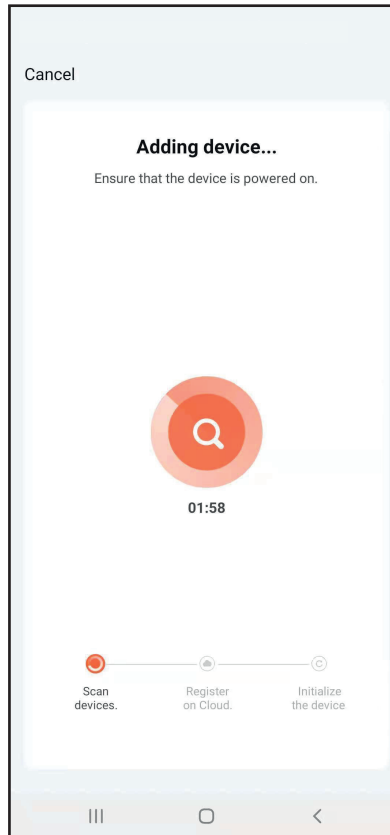
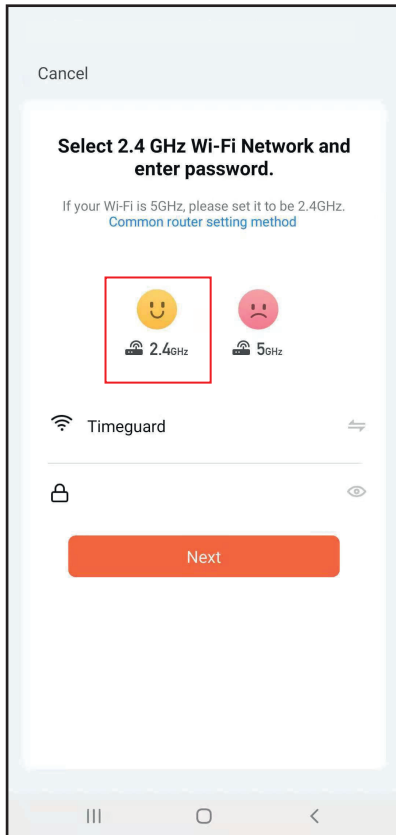
Note that the “Electrical” category is highlighted on the screenshot which covers smart plugs, power strips and switches. Additional categories can be selected by scrolling along the left hand side to find the devices category if required.

Once you have found the device category and type, follow the on screen instructions required to pair the device to your account.

Note that you can use the “Auto Scan” feature to add devices that are already set in pairing mode if the device supports this method of setup.

Tuya may also prompt you to switch on your mobile or tablet devices bluetooth connection, in which case the supported devices set in pairing mode can be added much faster using Tuya's automated pairing process.

# Adding a device EZ / AP mode

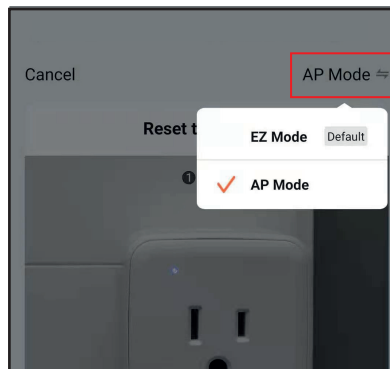
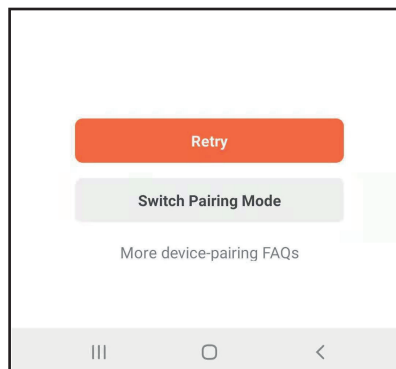
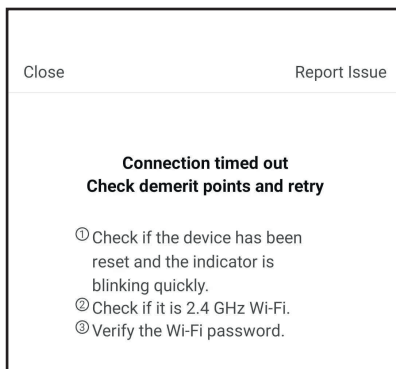


If the “Autoscan” feature doesn’t work then using the EZ mode is the next best option. EZ mode starts up automatically as soon as you select the product you wish to pair. Using the manual selection screen if it has been selected.

Most Tuya Smart equipment operates on the 2.4GHz band so splitting the 5GHz and 2.4GHz bands is preferred if your device keeps timing out as the FAQ section should indicate.

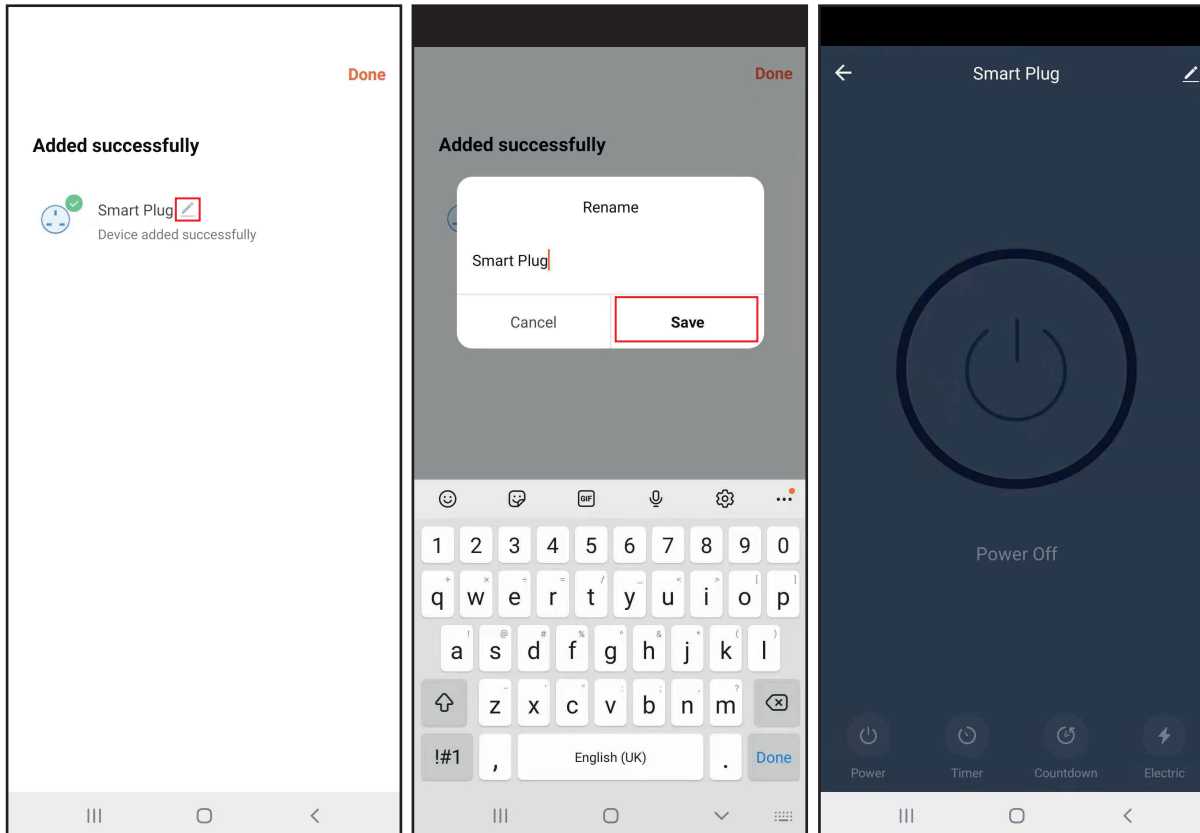
Follow the EZ mode on screen prompts to complete the pairing process. If the device continues to fail to pair to the Wi-Fi network, the application will prompt you to either check that your routers Wi-Fi frequency is set to 2.4GHz only, retry the process or change pairing modes.

When you change modes, AP mode would be the next best option to try, this enables the device to create it’s own wireless hotspot (access point) then attempts to attach your configured Wi-Fi credentials to the device directly.



If EZ mode AP mode & Auto Scan mode all fail, try making your own Wi-Fi hotspot (access point) from a spare mobile or tablet device and pair using this as your source of internet as it will act as a router. If this then fails the device could be considered faulty. However, if successful it would likely be a setting on the router that requires attention. Check this with your ISP.

# Adding a device / Configuration



When successfully paired, the completion screen will show on your display.

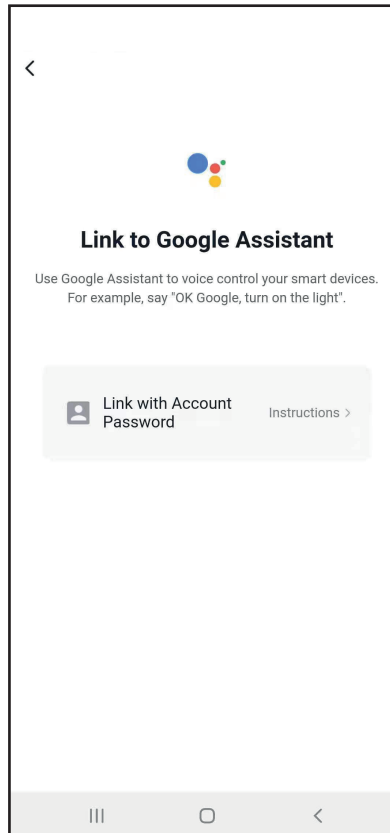
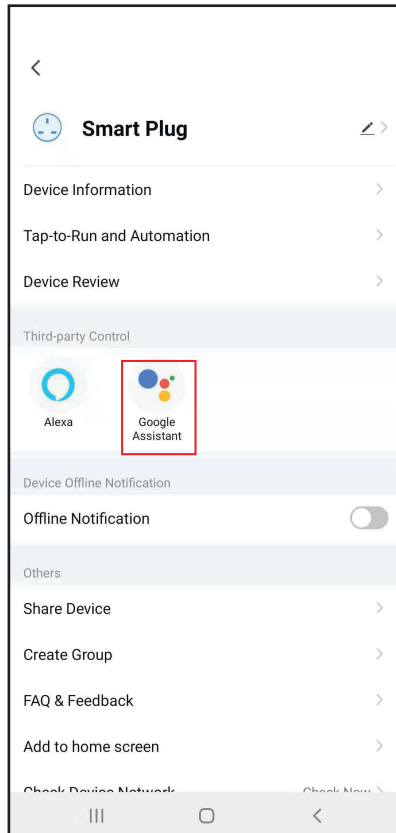
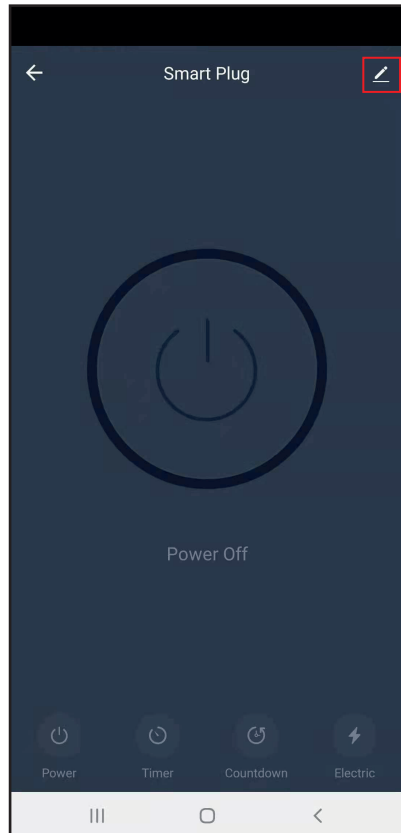
From here you can rename the device or continue using the default name. If a name change is required, select the pencil icon and a dialog box will show with the current name of the device. Amend this as required and then press the save button.

Once complete you can then select "Done" on the top right hand side of the display, of which the App will navigate you to the control screen for your new device to configure as you see fit.

Note that the control screen on show is for the Timeguard model: WFADAPM (Smart plug with power monitoring function).

Note that different devices will have unique and tailored control screen layouts, functions and navigation methods.

# Google / Alexa Services



Many devices that use the Tuya Smart platform have integration options for 3rd party host control.

Google Assistant and Amazon Alexa services are part of the choices for integration.

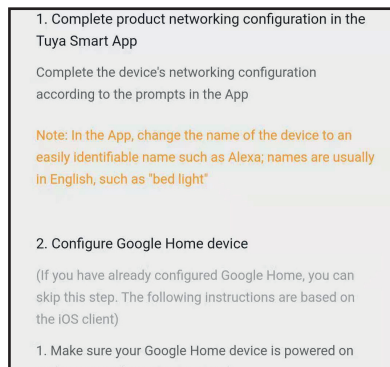
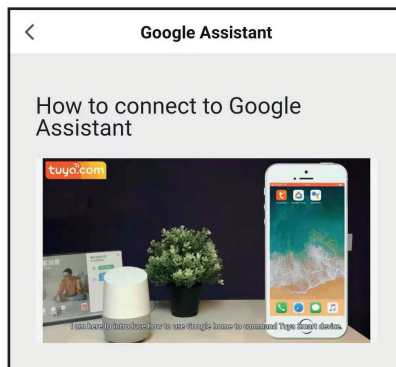
To establish if your Timeguard device has 3rd party support for Google or Alexa, select the pencil icon from the control screen.

Then select the 3rd party control you wish to integrate with. In this case the WFADAPM supports integration with both Alexa and Google Assistant.

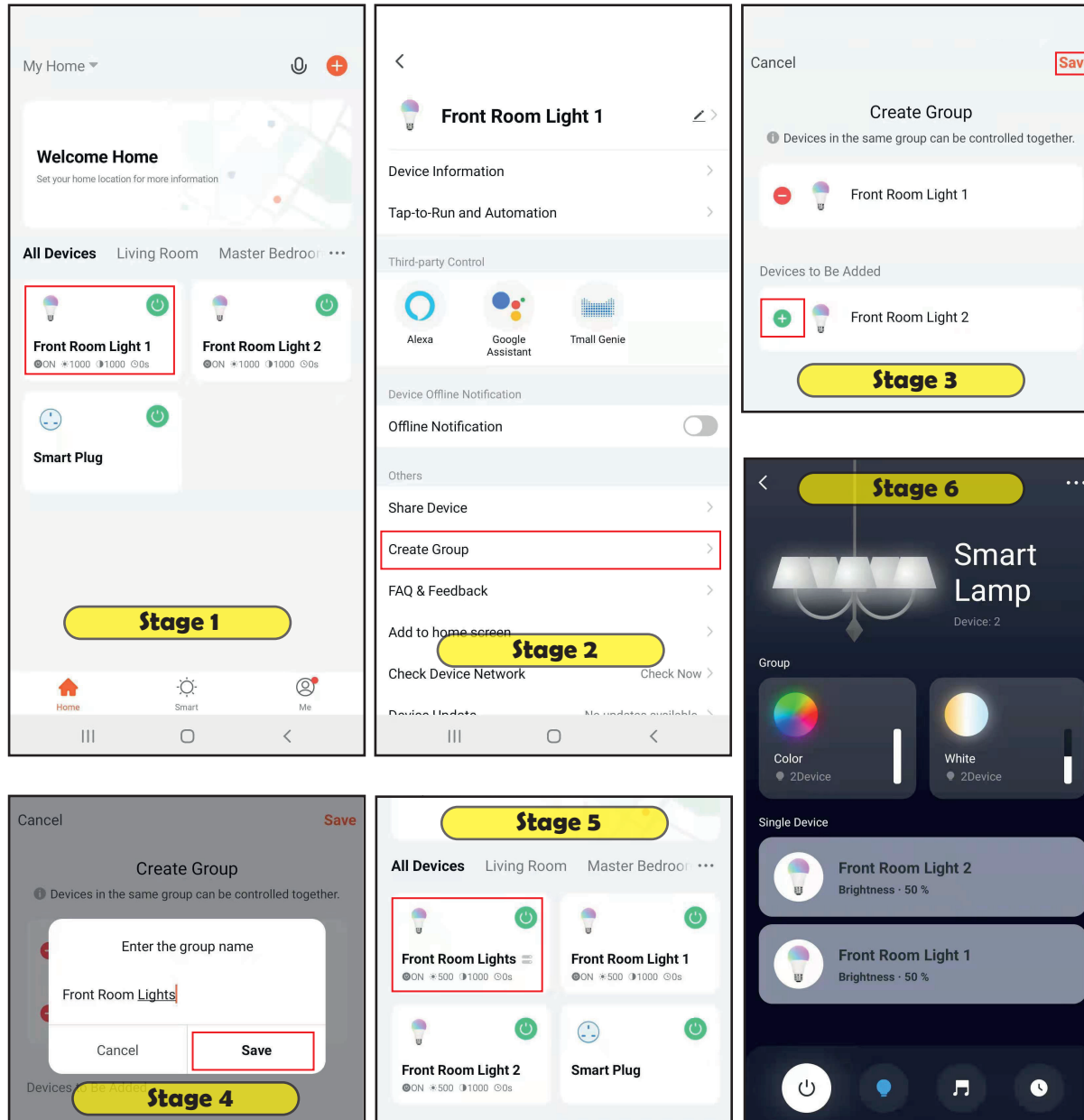
Choose your preferred 3rd party platform and select it. The app will then give instructions on how to link the service with your chosen 3rd party provider. Follow the onboard instructions or video guide for additional insight.

Note that configuration of 3rd party services may change and the methods used may be updated by the Tuya Smart development team.

Timeguard has no control over the 3rd party application updates with linking accounts to other services.



# Product Grouping



Product grouping is a useful feature for linking lighting circuits together wirelessly or if you have multiple lights installed in a lighting fixture where you would want all lamps to switch ON/OFF at the touch of a button.

To setup this feature select one of the lights you wish to make part of a group and press the pencil icon on the top right hand side of the control screen to navigate to the settings menu.

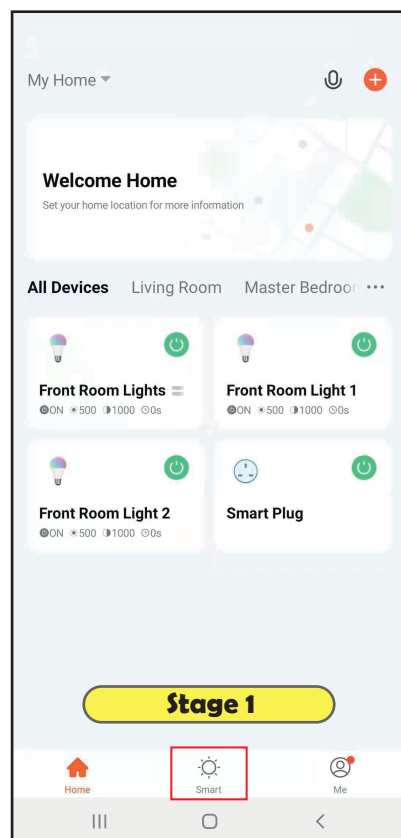
Select "Create Group" from the settings menu and add the additional products you wish to form the rest of the group. In this example Front Room Light 1 and 2 have been selected.

After giving the group a name i.e. Front Room Lights this grouping will now show on your home page. Select the group to gain control of the multiple devices in a central location.

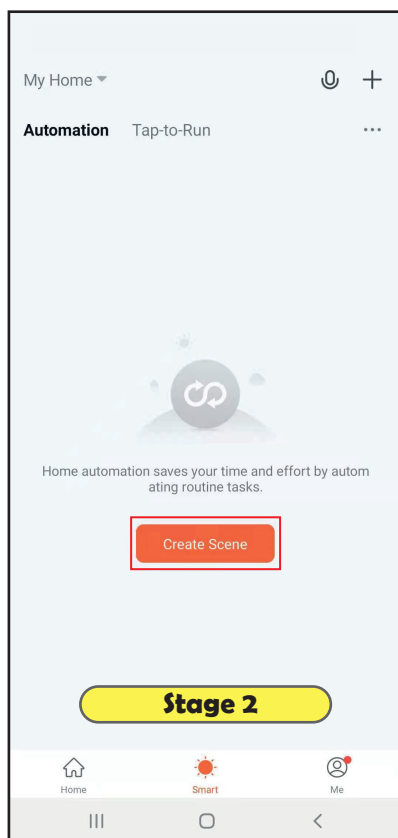
Note not all devices have the grouping function, to circumvent this, you can try using the "Smart Automation" feature on the Tuya Smart app if available.



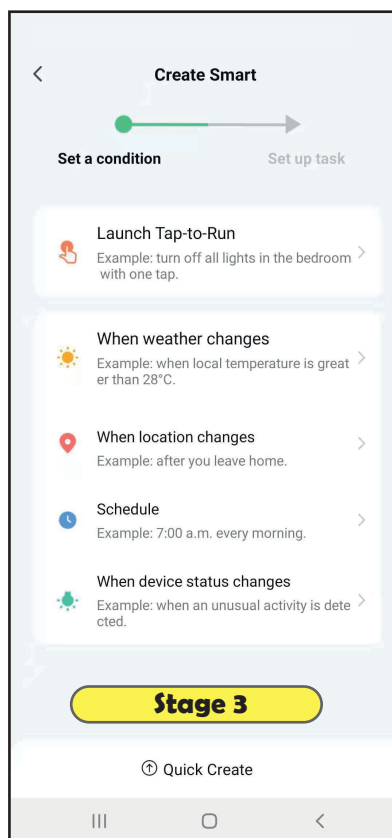
# Smart Automation / Tap-to-Run



Select "Smart"  
from the Tuya Smart  
home screen



Select "Scene"



Select  
"When weather changes"  
to trigger a product based  
on weather parameters

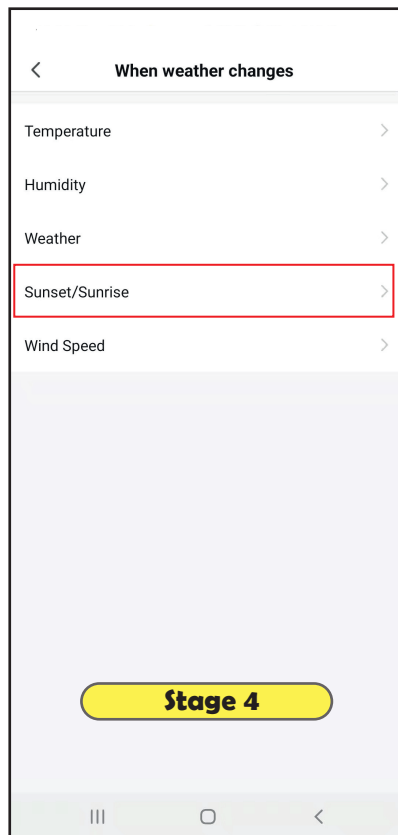
The smart automation function allows the user to create scenes based on weather changes, location changes or device status changes. These scenes can be integrated with multiple devices to allow seamless wireless communication between your devices.

For example you can set lighting to start after dusk or several hours before or after dusk based on your location. You can enhance this by integrating a switch or socket to operate when the lighting switches on after dusk. Without setting its own schedule separately.

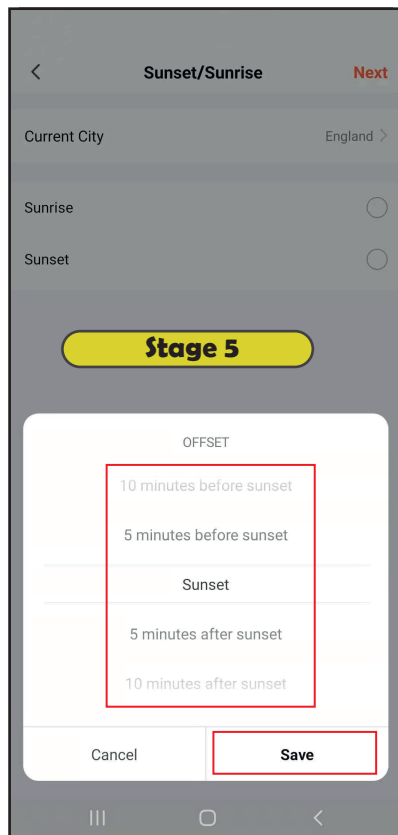
"Tap-to-Run" allows the user to initiate one simple action at the push of a button, the action could be to switch on several switches at the same time or to run a scene where devices, trigger other devices based on specific parameters of the end users requirements.

Pages 10 to 13 Illustrates a very simple scene being setup. Review all the stages and try out different scenarios!

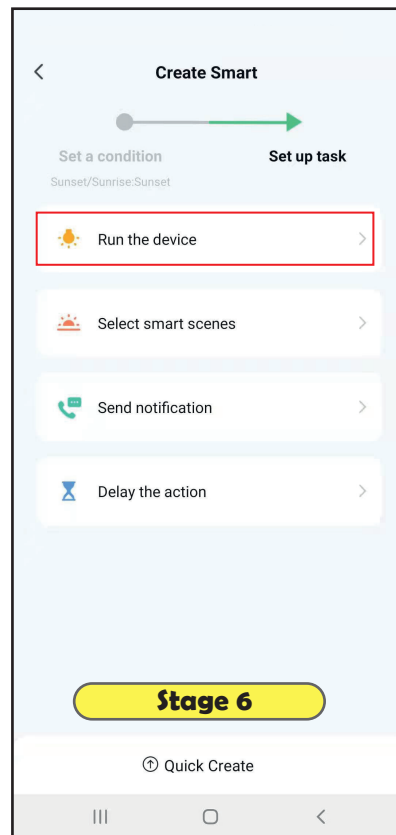
# Smart Automation / Tap-to-Run



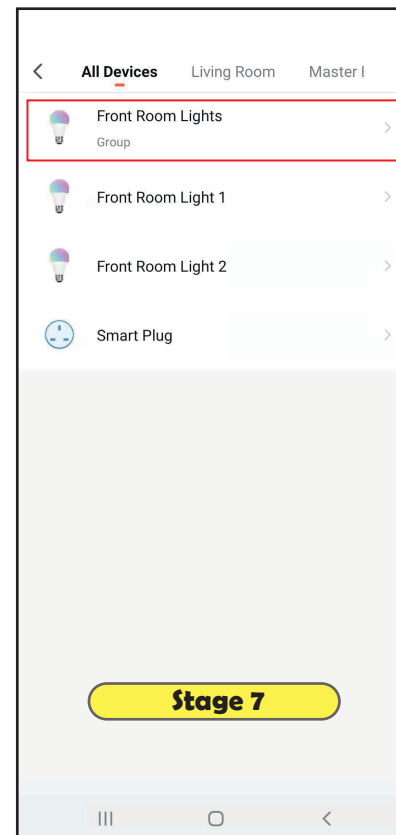
Select "Sunset/Sunrise" as a device trigger parameter



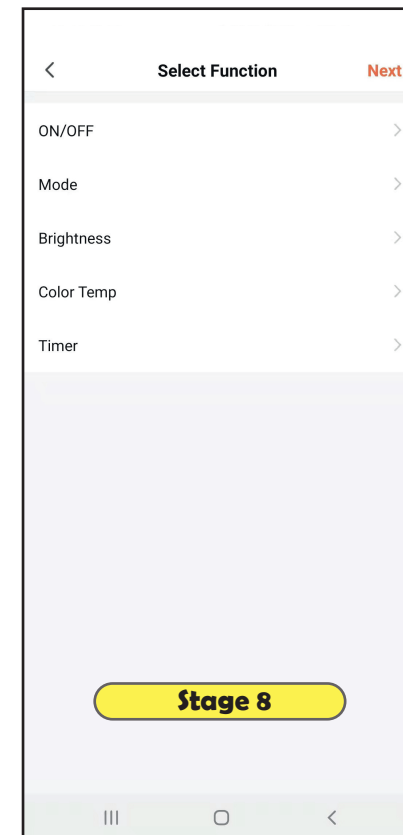
Select "Sunset". Determine the offset, being a certain before or after sunset for the trigger time if required. Select Save, then "Next"



Select "Run the device"



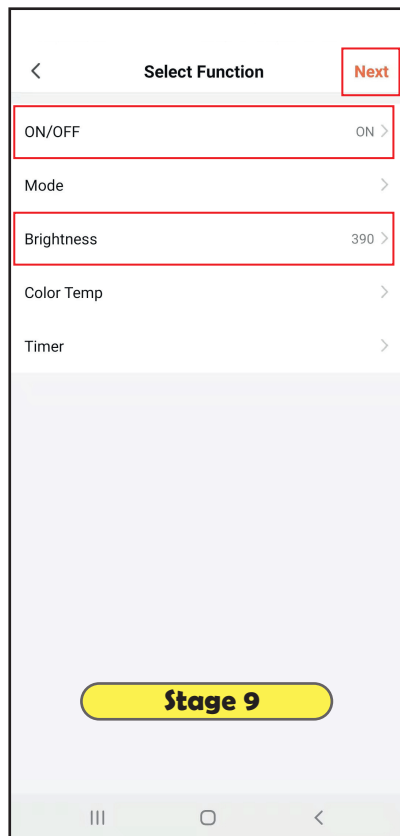
Select the device required for the scene



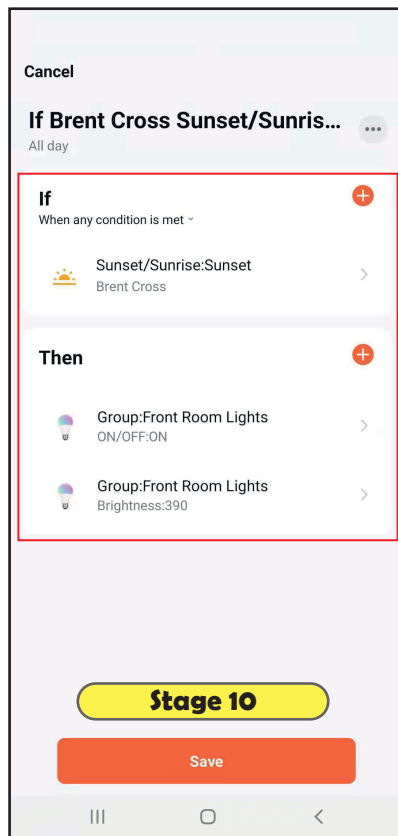
Select function, i.e. ON/OFF = Switch ON/OFF  
Mode = Change Colour, run another scene or enable music sync mode

Note depending on the device type the functions will vary.  
Multiple functions can work together as shown.

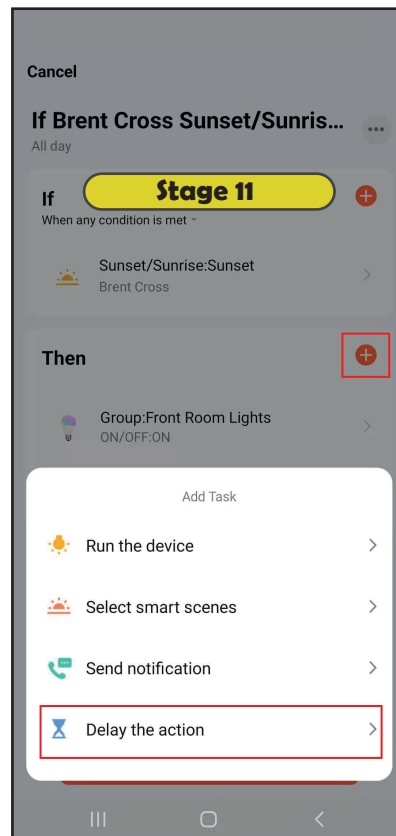
# Smart Automation / Tap-to-Run



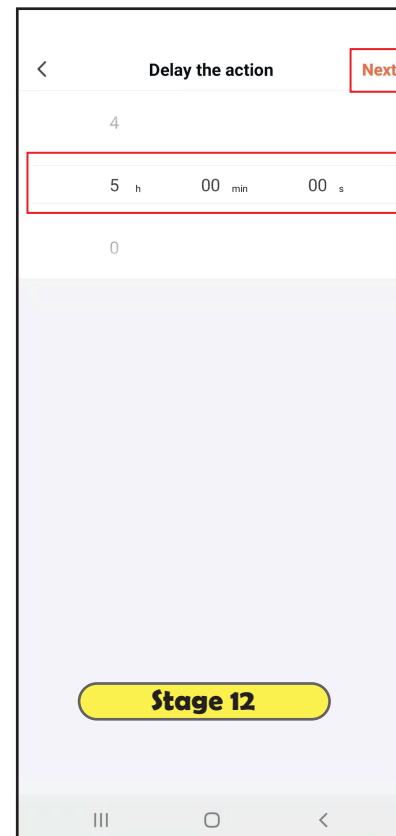
Note depending on the device type the functions will vary. Multiple functions can work together as shown. Confirm settings by selecting "Next"



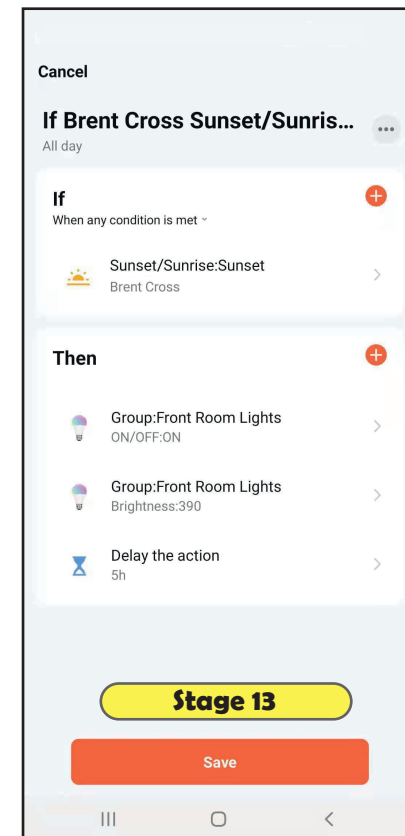
Notice the conditions of the scene so far. If the condition of sunset is met for the local area / region switch ON front room lights with a brightness level set at 390



Press the "+" button to add additional triggers if required, in this example, we will use the delay function

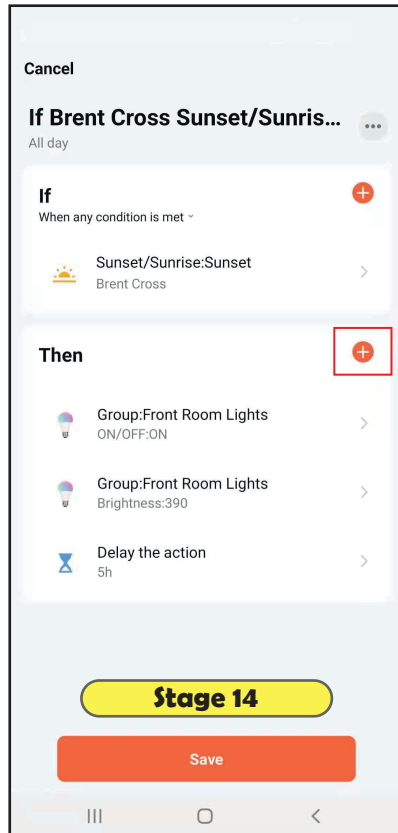


Select a delay time, in this example 5 hours will be selected. Press "Next" once the delay time is confirmed

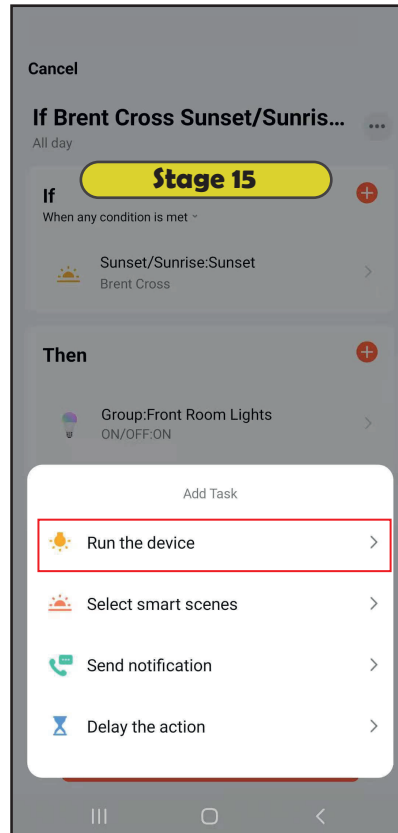


Scene so far, if the condition of sunset is met for the local area or region, switch ON front room lights with a brightness level set at 390, then delay by 5 hours

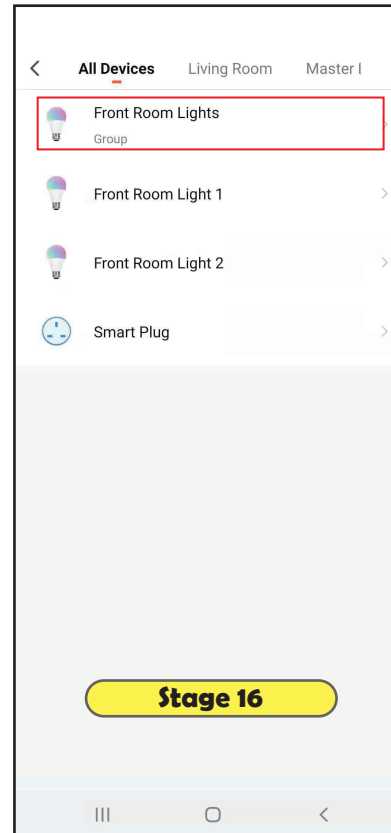
# Smart Automation / Tap-to-Run



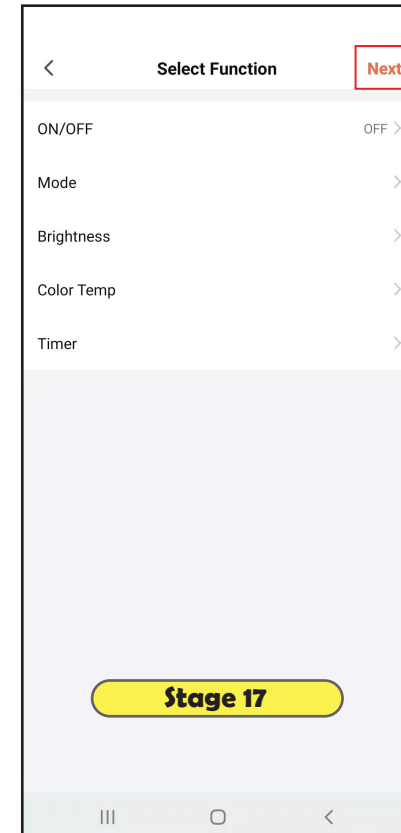
Press the "+" button to add another trigger



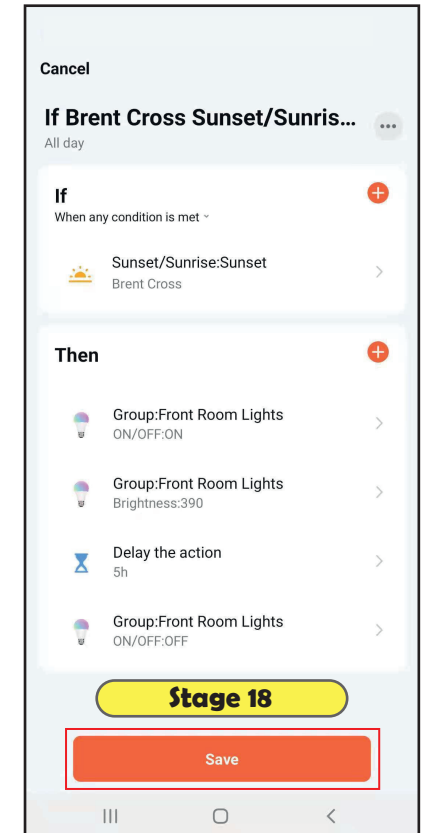
Select "Run the device"



Select the device to run, in this case it would be "Front Room Lights"

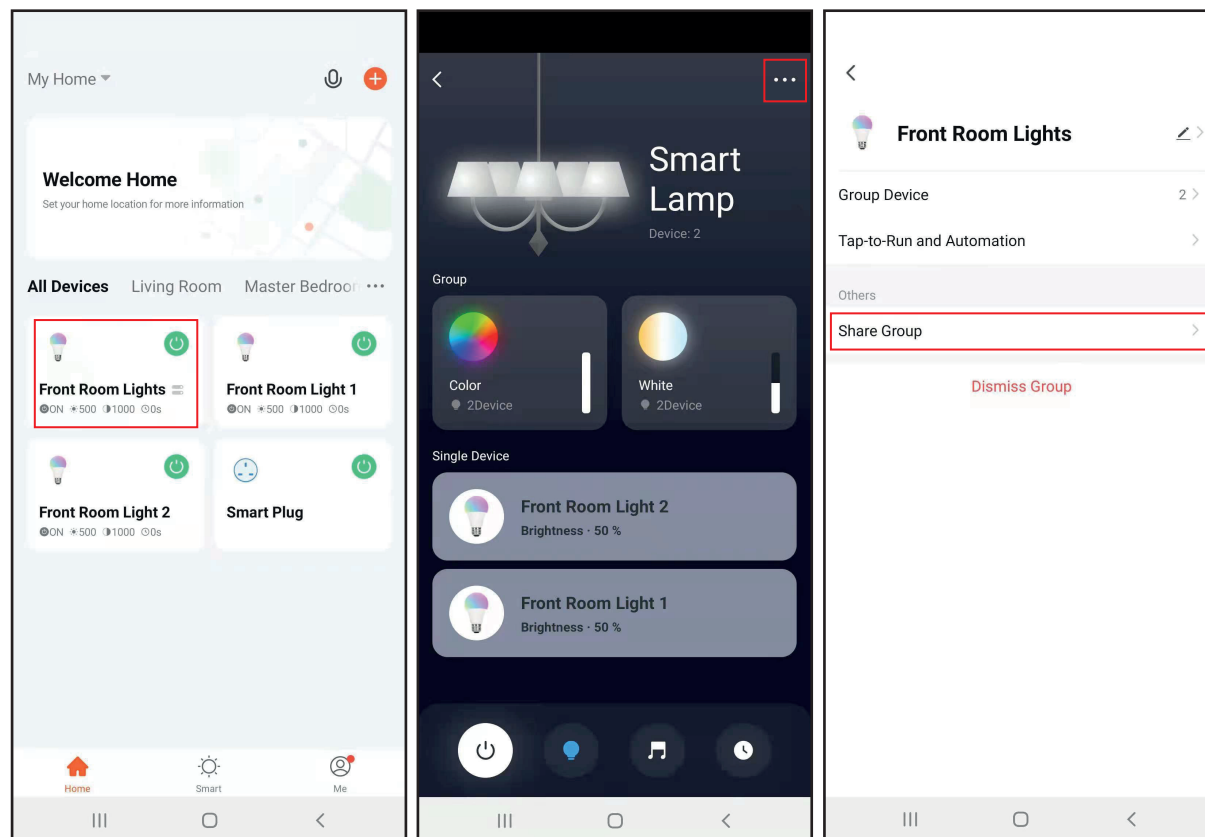


Select "OFF" then press the "Next" button



Scene breakdown: At sunset for the local area or region, switch ON front room lights with a brightness level set at 390, then delay ON time by 5 hours before switching the lights off. Press "Save" to confirm

# Sharing a device



You can share devices on an individual level or share the entire property if you wish to allow other users to access these devices.

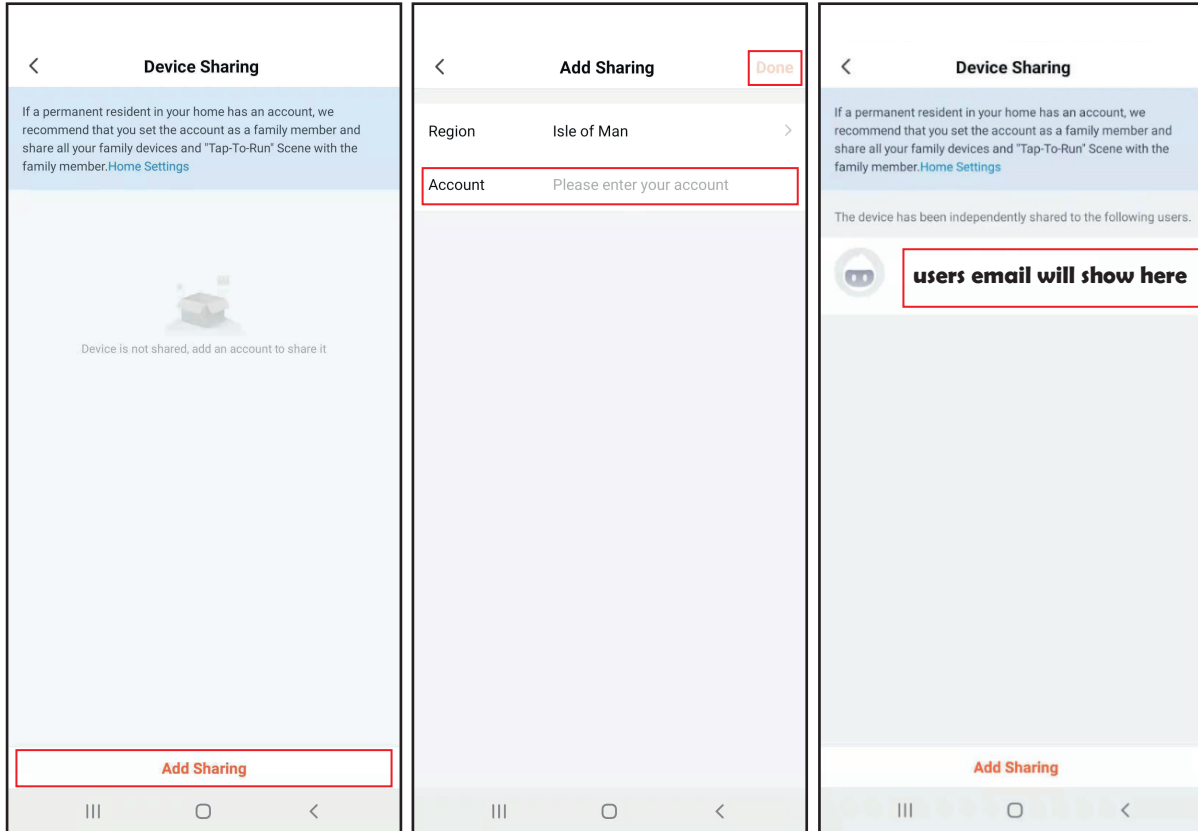
Note that sharing a device allows only another user access they will not be able to delete the device from the main users account and other changes may also be limited subject to the device being shared.

To share a device or a device group, select the item from the list of devices shown on your account and navigate to the settings screen.

Next select “Share Device” or “Share Group” depending on if the device in question is a individual product or a group of products working together.



# Sharing a device



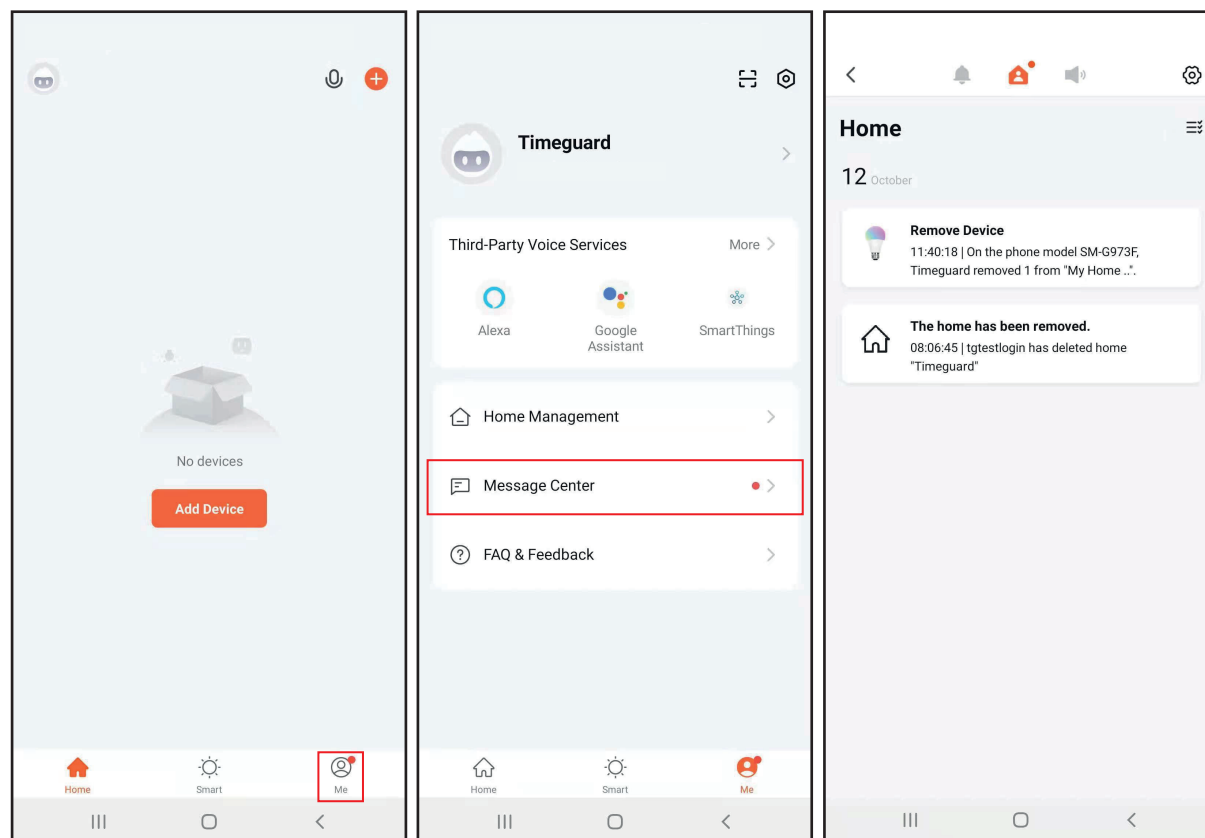
Select the "Add Sharing" button.

Type in the email address the user specified to register with when their Tuya Smart account was created. Type this in under the field "Account".

Select "Done", the device will now be shared with the end user specified.

Under device sharing, the app will show the user by the associated email address to confirm they have access to said device.

# Message Center / Notifications



Message center allows the user to pickup notifications left by the Tuya Smart application.

It will inform the user if a device has been removed, when a photo has been taken by any camera based equipment (with photo to hand), when scenes have executed from the smart automation section of the app, and when motion detection alerts come in from various sensors. It is the central place to keep informed about the data and activity your devices have been capturing or performing while you are away from the home.

**Top Tip:** When creating scenes you can add in a trigger to receive a text, call or notification once the scene has executed, this way when working remote you are always updated even if you forget to monitor the app daily.

Some devices can have the notifications switched off if desired.

# Notes & Support:



- All images in this quick start guide refer to the Android version of the Tuya Smart App. Version (3.32.5 International).
- All data and images are strictly for illustrative purposes only.
- In the process of Tuya updating the software, Tuya Global reserves the right to change the usage and navigation tools in the application at anytime without notice.
- Timeguard Ltd have no responsibility for the tools related for the Tuya Smart Application.

## Support

Whenever you need us just visit our website at [www.timeguard.com](http://www.timeguard.com). It's not just our catalogue that's now online, it's the latest information, press releases and downloading facilities for product operating instructions. Check out Timeguard online now for simple selection of the right products for your needs.

### **Sales Office Direct Line**

Tel: 020 8452 1112 | Fax: 020 8450 0635 | Email: [csc@timeguard.com](mailto:csc@timeguard.com)

### **Helpline & Technical Service Direct Line**

Tel: 020 8450 0515 | Fax: 020 8450 0635 | Email: [helpline@timeguard.com](mailto:helpline@timeguard.com)

### **General Enquiries Tel:**

020 8450 8944 | Fax: 020 8452 5143 Email: [csc@timeguard.com](mailto:csc@timeguard.com) | Website: [www.timeguard.com](http://www.timeguard.com)



A **theben** Group Company



FSTWIFITU



WFTWSUSB



WFIC



WFADAPM

[www.timeguard.com](http://www.timeguard.com)

For our complete Wi-Fi Product Range.

Victory Park, 400 Edgware Road, London NW2 6ND  
Sales Office Direct Line: 020 8452 1112  
Email: [csc@timeguard.com](mailto:csc@timeguard.com)