



Count on it.

Parts Catalog

Finishing Kit

**DPA Cutting Unit with 5in Reel Reelmaster®
5010-H Series Traction Unit**

Model No. 03647



Ordering Replacement Parts

To order replacement parts, please supply the part number, the quantity, and the description of each part desired.

Understanding Reference Numbers

Each identified part in an illustration has a reference number. The reference number for a part also appears in the parts list, along with other information about the part.

This catalog uses two special reference number formats, one to indicate parts in a service assembly and another to indicate the quantity of a given part in an illustration.

Service Assembly Reference Numbers

Parts in service assemblies have reference numbers in the form a:b. The a represents the reference number of the entire service assembly and the b represents a sequential number unique to each part within the service assembly.

For example, a wheel assembly might be identified by reference number 6, the tire by 6:1, the valve by 6:2, and the wheel by 6:3. When you order the assembly identified by reference number 6, you receive all parts identified by reference numbers 6:1, 6:2, and 6:3. However, you may also order any part individually. Reference numbers of this type appear in illustration and in parts lists.

Reference Numbers Indicating Quantity

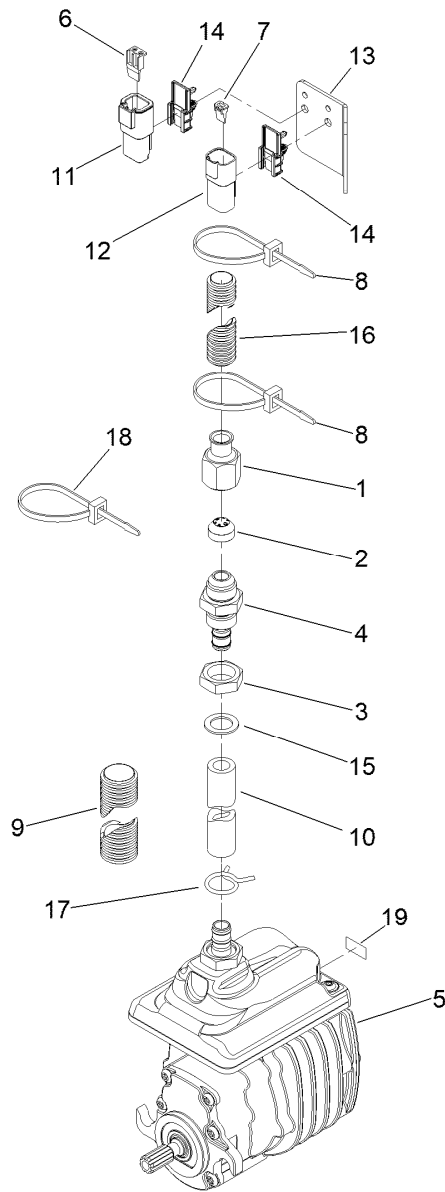
In an illustration, if a reference number indicates more than one part, the reference number has the form nX y. The n represents the quantity of the part, the X is the multiplication symbol, and the y represents the reference number.

For example, in an illustration, the reference number 2X 37 means that two of the parts identified by reference number 37 are indicated.

Contents

5 Inch Electric Motor Assembly No. 138-8907..... 4

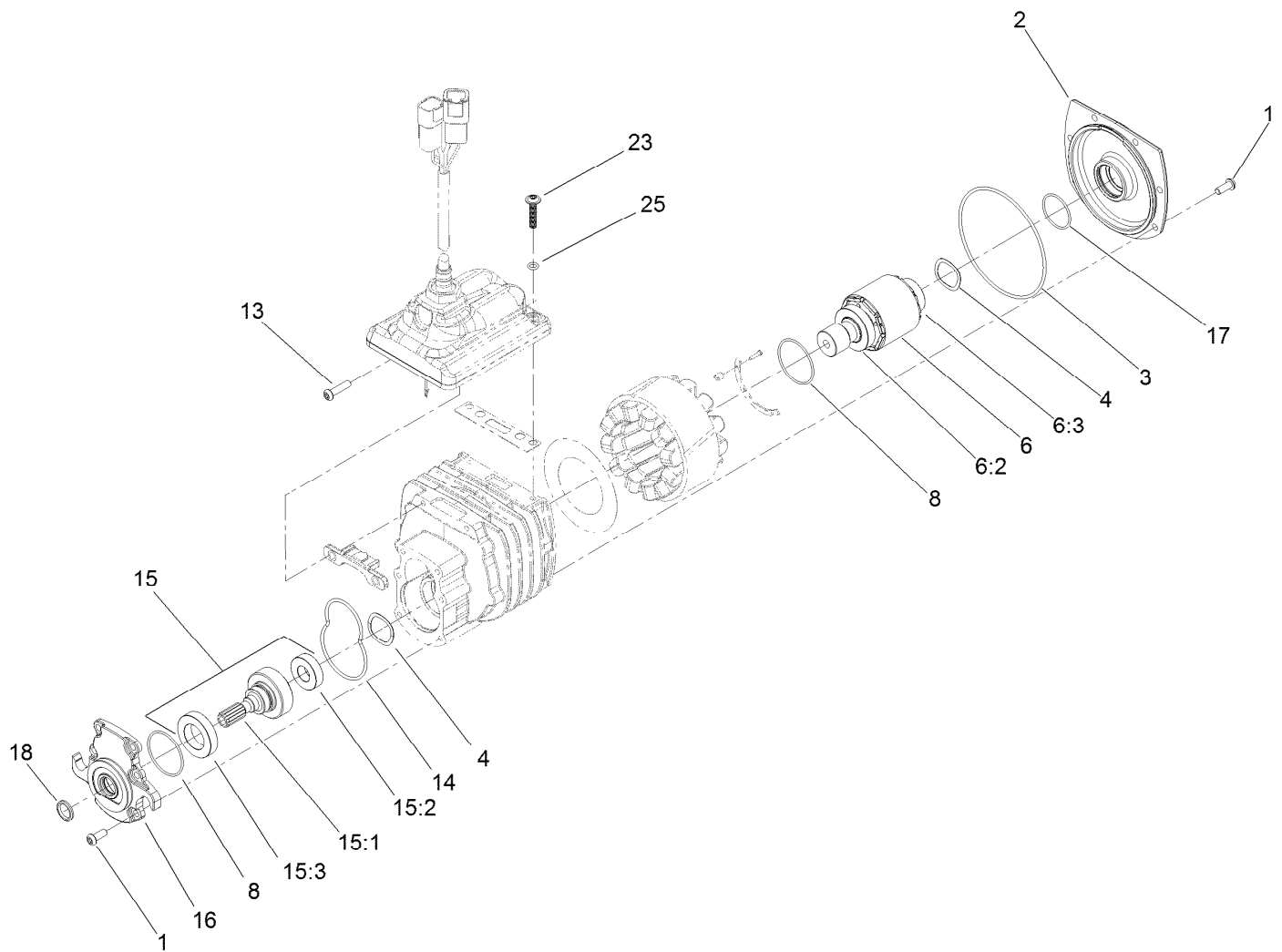
5 Inch Motor Assembly 5



5 Inch Electric Motor Assembly No. 138-8907

Ref.	Part Number	Qty.	Description	Ref.	Part Number	Qty.	Description
1	119-7481	1	Nut-Ferrule	11	32160-245	1	Connector
2	119-7480	1	Ferrule	12	32160-315	1	Connector
3	119-7457	1	Nut	13	127-2451	1	Plate-Connector
4	119-7545	1	Fitting-Bulkhead	14	32180-103	2	Clip-Connector
5		1	Motor-Electric ●	15	3256-69	1	Washer-Flat
6	32180-083	1	Wedge	16	127-2527	1	Tubing-Convolutd, Slit
7	32180-084	1	Wedge	17	138-8924	1	Clamp-Hose
8	3290-378	3	Tie-Cable	18	3290-381	1	Tie-Cable
9	127-2452	1	Tubing-Convolutd, Slit	19	144-6727	1	Decal-Hot Surface
10	127-2638	1	Hose				

● Not serviced separately



5 Inch Motor Assembly

Ref.	Part Number	Qty.	Description
1	120-4559	12	Screw-BHCS
2	115-4779	1	Cover-Motor
3	112-9609	1	O-Ring
4	112-5163	2	Washer-Wave
6	119-7450	1	Rotor ASM
6:2	112-5158	1	Bearing-Ball
6:3	120-4557	1	Bearing
8	112-9616	2	O-Ring
13	120-4623	2	Screw-BHCS
14	112-9611	1	O-Ring

Ref.	Part Number	Qty.	Description
15	115-4782	1	Output Gear ASM
15:1	112-5153	1	Gear-Output
15:2	120-4557	1	Bearing
15:3	112-5158	1	Bearing-Ball
16	125-1477	1	Cover-Gearbox
17	119-1156	1	O-Ring
18	119-7451	1	Seal-Oil
23	138-8918	2	Screw-Fbhcs
25	138-8916	2	O-Ring

Notes:

Notes:



Count on it.