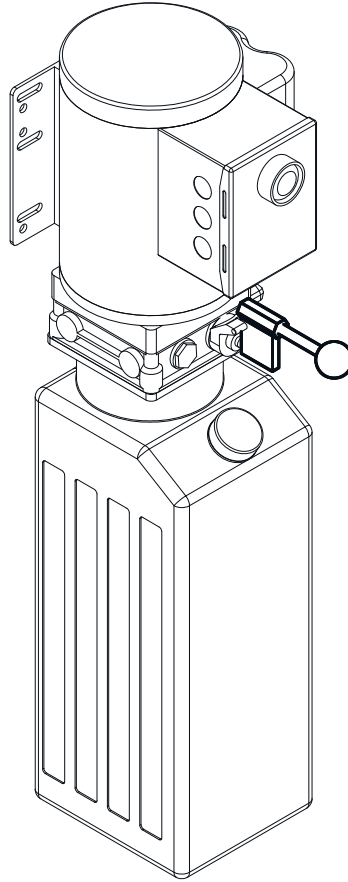




## **Installation Manual Supplement Bench Mount Lever (BML-DLH)**



2311 South Park Rd. Louisville, Kentucky 40219

Email: [sales@challengerlifts.com](mailto:sales@challengerlifts.com) Web site: [www.challengerlifts.com](http://www.challengerlifts.com)

Office 800-648-5438 / 502-625-0700 Fax 502-587-1933

**IMPORTANT:** READ THIS MANUAL COMPLETELY BEFORE  
INSTALLING or OPERATING LIFT

## RECEIVING

The shipment should be thoroughly inspected as soon as it is received. The signed bill of lading is acknowledgement by the carrier of receipt in good condition of shipment covered by our invoice.

If any of the goods called for on this bill of lading are shorted or damaged, do not accept them until the carrier makes a notation on the freight bill of the shorted or damaged goods. Do this for your own protection.

NOTIFY **Challenger Lifts** AT ONCE if any hidden loss or damage is discovered after receipt.

IT IS DIFFICULT TO COLLECT FOR LOSS OR DAMAGE AFTER YOU HAVE GIVEN THE CARRIER A CLEAR RECEIPT.

File your claim with **Challenger Lifts** promptly. Support your claim with copies of the bill of lading, freight bill, and photographs, if available.

## Component Packing List

PART #	QTY/ LIFT	DESCRIPTION
16902	1	BML Lowering Handle Valve Assembly
16907	1	BML Air Valve Bracket

USE THIS INSTALLATION SUPPLEMENT IN PLACE OF STEPS 15 THRU 20 OF THE STANDARD INSTALLATION MANUAL.



Do not attempt to raise a vehicle on the lift until the lift has been correctly installed and adjusted as described in the lift installation manual and this supplement.

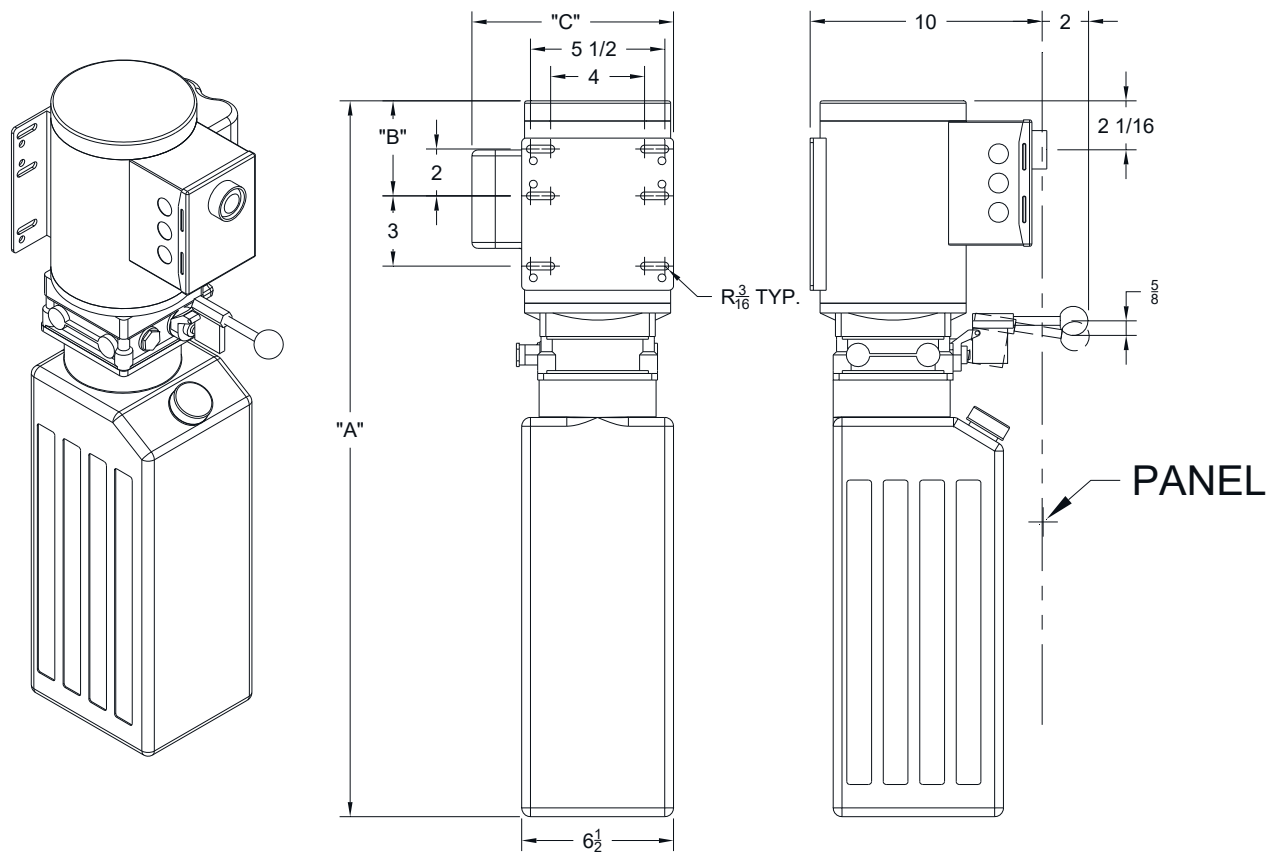
## General Specifications

For use with Challenger Lifts models **EV1020/1220** and **EW1020/1220**. Use this Supplement in place of step 15 of the standard Installation Manual.

Select the power unit location so that the driver or passenger side of the vehicle is within view. Operator should be in a position to notice any misalignment of the vehicle during the lifting operation.

**Note:** Depending on the bench design, the reservoir may need to be rotated 90°. Rotating the reservoir could ease filling the tank with hydraulic oil.

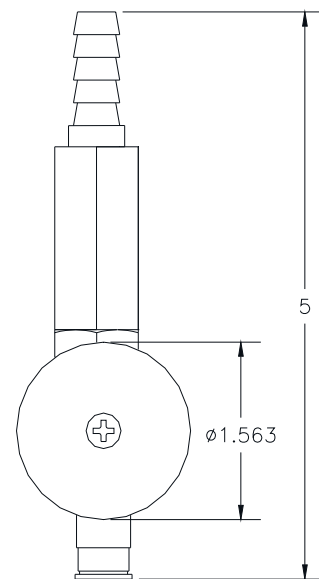
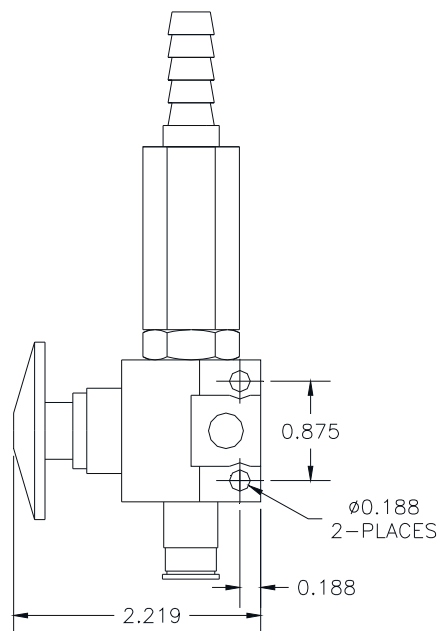
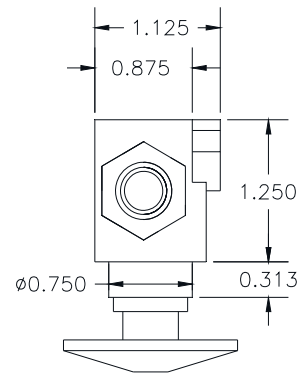
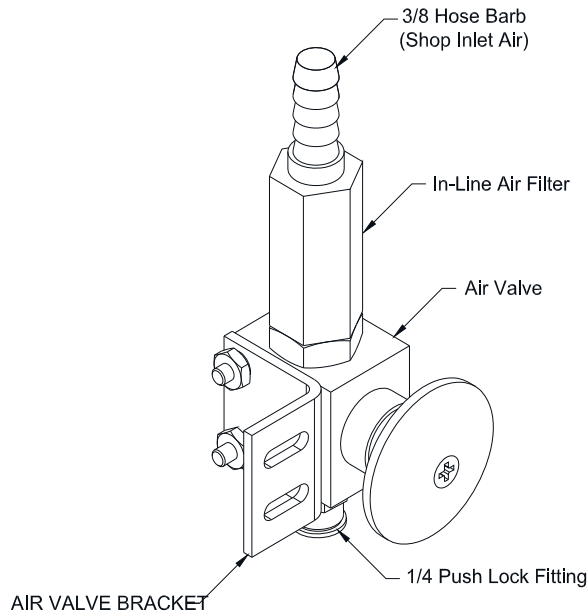
**Power Unit Dimensions**



POWER UNIT P/N	"A"	"B"	"C"
AB-9367-DLH	30 7/8"	4 1/16"	8 1/2"
AB-9858-DLH	30 7/8"	4 1/16"	8 1/2"

## Lock Release Air Valve Assembly Dimensions

The Lock Release Air Valve Assembly needs to be mounted in close proximity of the power unit's raise button and lowering valve handle. **(Note: bracket to mount the lock release air valve is included)**

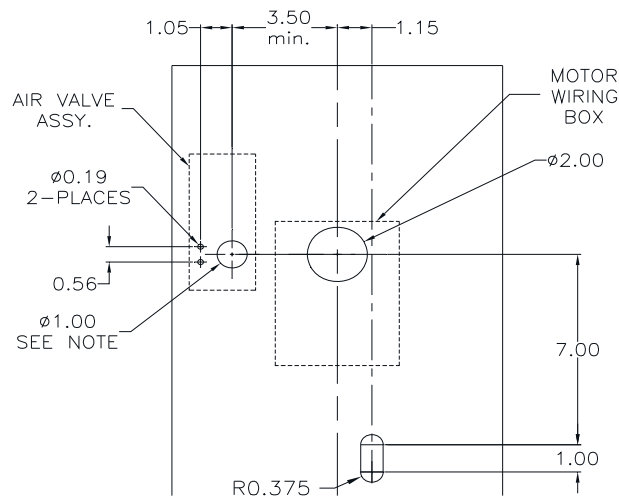


## **Bench Preparations**

Cutouts should be added to workbench door as shown below in **Fig 1**. Use the power unit part number to select the CORRECT door cutouts.

### **LIFT MODEL (POWER UNIT):**

**AB-9367-DLH**

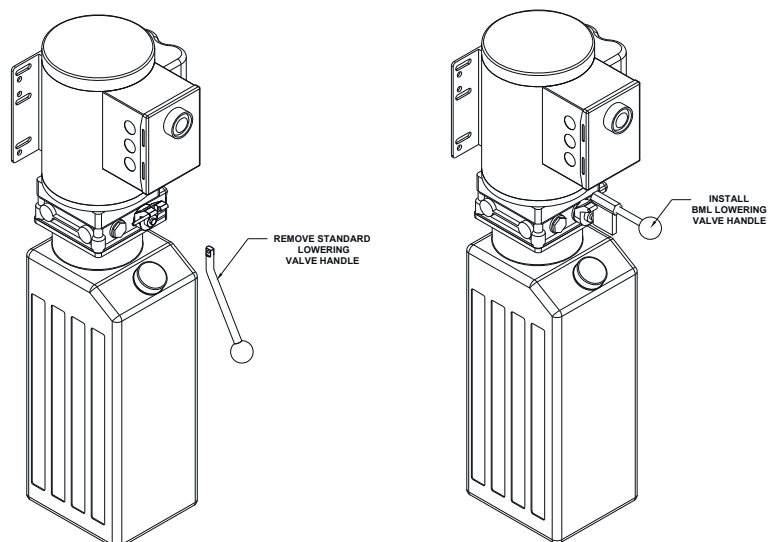


\* NOTE: OPTIONAL CUTOUT LOCATION FOR THE  
LOCK RELEASE AIR VALVE & BRACKET

**Fig1 -Door Cutout Dimension**

## **BML Handle Installation**

Use a punch and hammer to knock out the 3/16" dia. roll pin. Remove the Standard Lowering Valve Handle. Install the provided BML Lowering Valve Handle using the same roll pin. **Fig. 2**



**Fig 2 –BML Lowering Valve Handle Install**