

iCLASS Credentials

iCLASS Card - 200 / 210

iCLASS cards can be ordered either with both SIO and iCLASS programming or iCLASS programming only. Ensure each required option has been checked with the appropriate choice to fulfill a completed order form.

Base Model: ☐ 200 Standard PVC ☐ 210 Composite 40% Polyester / PVC*

iCLASS Memory Size and Allocation (Select one option)

- ☐ **0** - 2k Bits (256 Bytes) with 2 Application Areas
- ☐ **3** - 32k Bits (4K Bytes) Application areas 16k/2+16k/1
- ☐ **4** - 32k Bits (4K Bytes) Application areas 16k/16+16k/1

iCLASS Programming (Select one option)

- ☐ **HP** - Programmed with Security Identity Object (SIO) and standard iCLASS Access Control Application (**Recommended**)¹
- ☐ **P** - Programmed with standard iCLASS Access Control Application
- ☐ **C** - Unprogrammed, for use with iCLASS SE Encoder

Front Packaging (Select one option)

- ☐ **G** - Plain White with Gloss Finish
- ☐ **C** - Custom Artwork with Gloss Finish - Specify Custom Artwork Number²

Back Packaging (Select one option)

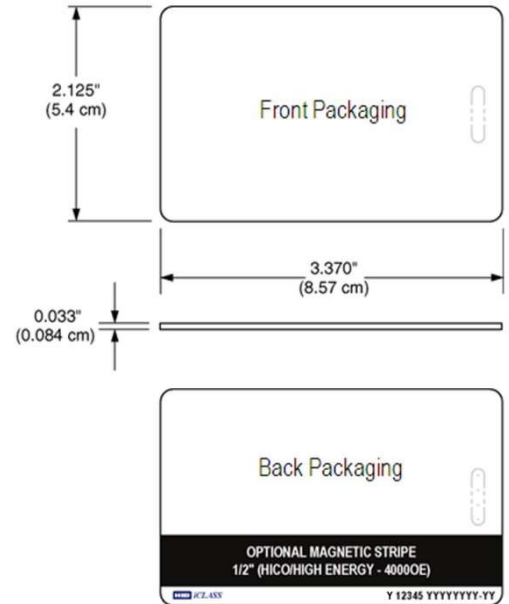
- ☐ **G** - Plain White with Gloss Finish³
- ☐ **C** - Custom Artwork with Gloss Finish - Specify Custom Artwork Number²
- ☐ **1** - Plain White with Gloss Finish with Magnetic Stripe³
- ☐ **3** - Custom Artwork with Gloss Finish with Magnetic Stripe - Specify Custom Artwork Number²

Card Numbering⁴ (Select one option)

- ☐ **M** - Sequential Matching Encoded/Printed (Inkjetted)⁸
- ☐ **N** - No Printed Card Numbering
- ☐ **S** - Sequential Encoded/Sequential Non-Matching Printed (Inkjetted)⁷
- ☐ **R** - Random Encoded/Non-Matching Sequential Printed (Inkjetted)⁷
- ☐ **A** - Sequential Matching Encoded/Printed (Laser Engraved)
- ☐ **B** - Sequential Encoded/Sequential Non-Matching Printed (Laser Engraved)
- ☐ **C** - Random Encoded/Non-Matching Sequential Printed (Laser Engraved)

Slot Punch⁵ (Select one option)

- ☐ **N** - No slot punch, This card can be slotted vertically, Printed Vertical Slot Indicators
- ☐ **B** - No Slot Punch, This card can be slotted horizontally, Printed Horizontal Slot Indicators⁷
- ☐ **V** - Vertical Slot Punch
- ☐ **H** - Horizontal Slot Punch⁶



Y = iCLASS Programming
12345 = Card ID Number
YYYYYYYY-YY = Sales Order Number

Option - Custom Artwork²

☐ _____ (Specify Artwork Number - Refer to the Custom Artwork Forms for new artwork)

Enter your final card options from check boxes above. Example: 2000HPGGNN


Final Part Number								-	(Options #)
--------------------------	--	--	--	--	--	--	--	---	--------------------

iCLASS Card Programming Information

Format Number	Field Name(s) e.g. Facility Code	Value	QTY	Encoded Start Number	Encoded Stop Number
HID Elite ICE #				Printed Start Number	Printed Stop Number

¹Secure Identity Object (SIO) Programming is not mandatory but highly recommended. If SIO programming is not selected the letter H should be left out from Final Part Number, for example: 2000PGGNN

²For new artwork files, contact Customer Service for custom artwork number, lead-times, and cost.

³Cards ordered with plain white front and back packaging, or custom artwork, will still have a small HID logo  and reference number printed in the lower left-hand corner and a slot punch target printed on the back of the card. The majority of part numbers are marked with sales order number, a custom part number is required to omit all marking from the card. Contact your local support representative for details.

⁴The Printed card number is placed in the bottom right-hand corner on the back of the card.

⁵Cards are provided with an optional slot punch at no additional charge. Some video imaging printers cannot accommodate pre-slot punched cards.

⁶The ability to add a horizontal slot punch requires a different iCLASS antenna design. Users can expect a read range reduction of approximately 20% if they order option H for the Slot Punch.

⁷Please note that cards shipped within the Americas are always laser-engraved. Inkjetted option is not available for these cards.

*The composite construction is recommended for all cards with over-laminate applied. Consult with the printer manufacturer prior to ordering.