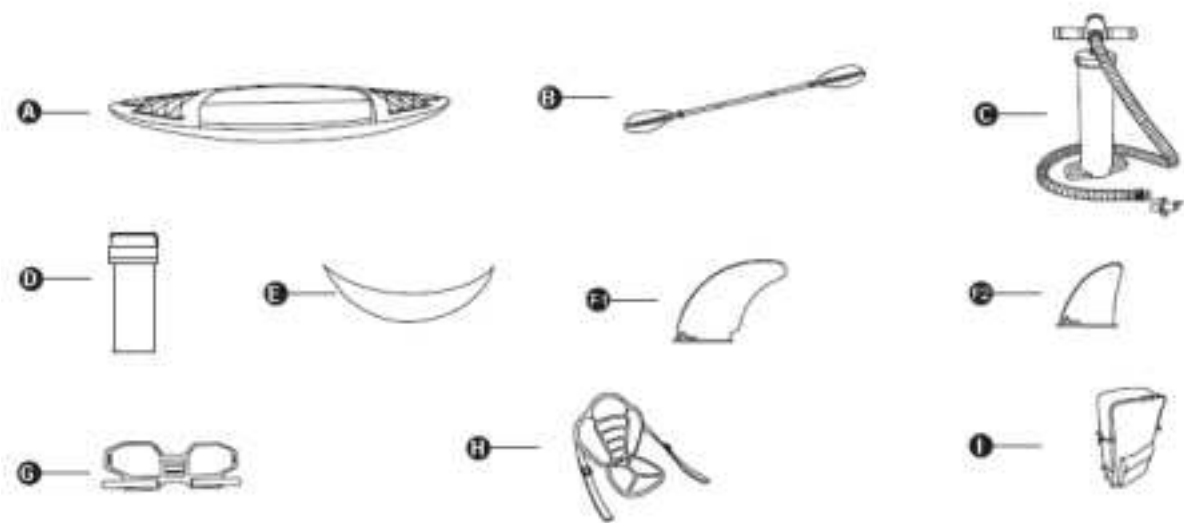
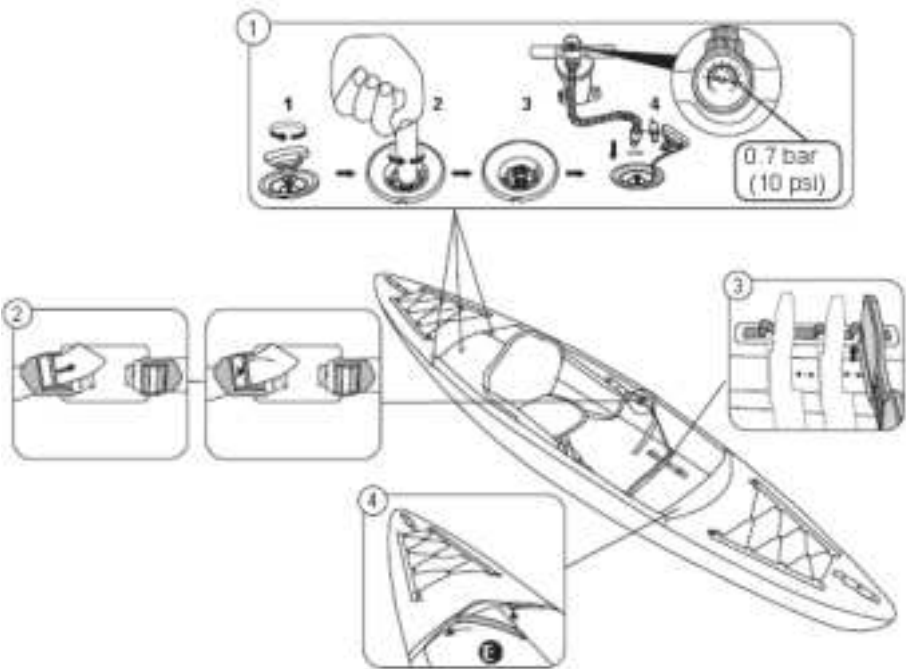
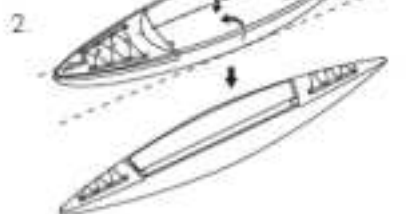
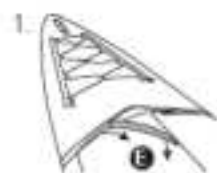
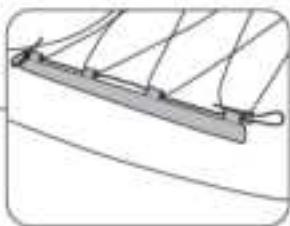
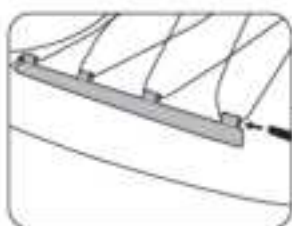
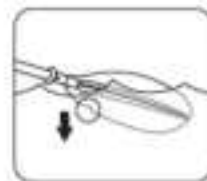
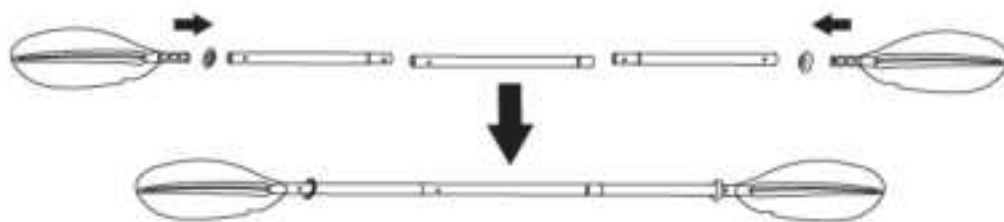
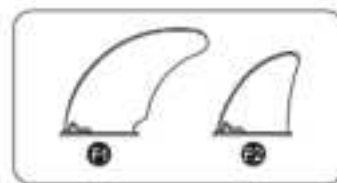
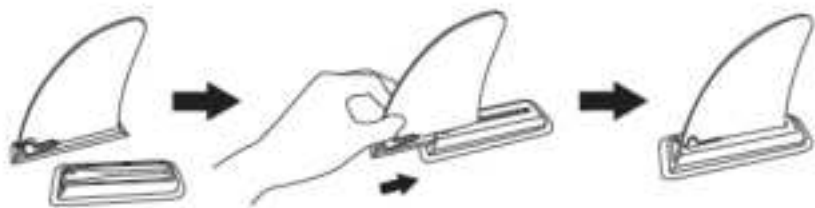


Arrow Elite™ Kayak Manual



	A	B	C	D	E	F1	F2	G	H	I
65179	x1	x1	x1	x1	x1	x1	x1	x1	x1	x1





OWNER'S MANUAL

Save These Instructions – Read carefully before operating.
Follow all safety and operating instructions. If you don’t follow these instructions, it may cause the boat to overturn or explode and result in injury or death.

IMPORTANT SAFETY INSTRUCTIONS – WARNINGS

- Before every use, carefully inspect all boat components including air chambers, grab ropes, oars, and air valves, to ensure everything is in good condition and tightly secured. Please stop to repair if you find any damage.
- Passenger numbers and load weights shall by no means exceed specified capacities. Refer to the Technical Specifications section of this manual (Product Descriptions) to determine passenger numbers and load weights for your boat. Loads that are over weight will cause overturn and drowning.
- Inflate according to the numbered air chamber and rated pressure on the boat, or it may cause overinflation and boat explosion. Exceeding the data given on the capacity plate may cause the craft to damage, overturn and lead to drowning.
- Keep the boat balanced. Uneven distribution of persons or weight in the boat may cause overturning of the boat and drowning.
- **BE AWARE OF OFFSHORE WINDS AND CURRENTS.**
- Don’t leave the boat exposed to the sun for long periods of time, as high temperatures can increase air expansion, which can cause irreparable damage.
- Never transport the boat in inflated condition on a vehicle. Be aware of the potential harmful effects of liquids such as battery acid, oil, petrol. These liquids may damage your boat.
- Warning! When in deep water, please board via the stern of the boat through the safety rope or safety handle. Always immediately hold on to any part of the rope or handle at the bow or stern, choose the lower position and keep calm.

TECHNICAL SAFETY INSTRUCTIONS

- Do not exceed the maximum recommended number of people. Regardless of the number of people on board, the total weight of people and equipment must never exceed the maximum recommended weight capacity. Always use the seats/seating spaces provided.
- When loading the craft, never exceed the maximum recommended weight capacity. Always load the craft carefully and distribute loads appropriately to maintain design trim (approximately level). Avoid placing heavy weights high up.
- The maximum recommended weight capacity includes the weight of all people on board, all provisions and personal effects, any equipment not included in the light craft mass, cargo (if any) and all consumable liquids (water, fuel, etc.).
- When using the boat, life saving devices such as life jackets and buoys should be pre-inspected and used at all times.
- Buckets, water scoops and air pumps should always be available in case of air leakage or if the boat takes on water.
- When the boat is in motion, all passengers must remain seated at all times to avoid falling overboard.
- Use the boat in protected shore-zones, up to 300m (984 feet). Be careful with natural factors such as wind, tidewaters and tidal waves.
- Be careful when landing on the shore. Sharp and rough objects such as rocks, cement, shells, glass, etc. may puncture the boat.
- If one chamber is punctured when the boat is in the water, it may be necessary to fully inflate the other air chamber to prevent the boat from sinking.
- To avoid damage do not drag the boat on rough surfaces.
- Always wear a life jacket!
- It is the responsibility of the owner/operator to have at least one bucket/bailer on board, secured against accidental loss.
- Be responsible, do not neglect the safety rules, this could jeopardize your life and the lives of others.
- Follow these instructions to avoid drowning, paralysis or other serious injuries.
- Know how to operate a boat. Check in your local area for information and/or training as needed. Inform yourself about local regulations and dangers related to boating and/or other water activities.
- Drawings for illustration purposes only. May not reflect actual product. Not to scale.

PRODUCT DESCRIPTIONS

Item Number	Inflated Size	Recommended Working Pressure	Maximum Weight Capacity	Maximum Number of People
65179	3.65 m x 73 cm x 30 cm (12' x 29" x 12")	0.7 bar (10 psi)	160 kg (352 lbs)	1 adult

SETUP INSTRUCTIONS



PARTS & TOOLS NEEDED

Compare the parts in your box to the parts listed in this manual. Verify that the equipment components represent the model that you had intended to purchase.

RECOMMENDATIONS DURING THE INSTALLATION – WARNINGS & OVERVIEW

Never use high-pressure air to inflate your boat. This will lead to damage and void your warranty (if applicable).

- Only use Bestway® approved inflation pumps.
- Never stand on or rest objects on the boat during inflation.
- Inflate the chambers until you can see some folding at the welding seams. After inflation, compare the pressure gauge with the date mentioned in this manual. DO NOT OVER-INFLATE.
- The pressure gauge is for inflation purposes only, and the value of it is just for reference. It should not be used as a precision instrument.
- Always check the inflation pressure before using the boat. Ensure that the boat has reached the correct pressure mentioned in this manual and printed near the inflation valve.
- Be sure the valve is tightly closed before using the boat. Never open the cap of air valve while the boat is in use.
- After the craft is inflated, connect the belts of the seats and footrests to the side buckles on the craft. The location of the seats and footrests can be adjusted along with the craft floor



ASSEMBLY INSTRUCTIONS

For installation instructions, follow the illustrations inside the manual. Drawings are for illustration purposes only. May not reflect actual product. Not to scale.

** Safety ropes are required when using the boat to comply with boating-related safety regulations. Please ensure they are properly tied as shown.*

REPAIR PATCH INSTRUCTIONS

- If there is a small puncture, repair it according to the instructions on the repair patch.
- If the hole is too big to be repaired with the provided patch, purchase a Bestway repair kit or send the boat to a specialty shop to have the repairs made.

DISASSEMBLY INSTRUCTIONS

- To deflate, open the air valves by pushing the control stem in and rotating until the valves stay open. Deflate all the hull chambers at the same time so the air pressure can drop together.
- Extended sun exposure can shorten the lifespan of your boat. Do not leave boats in direct sunlight for more than 1 hour after use.

MAINTENANCE & STORAGE

- Use the spanner to tighten the air valve if it is leaking.
- Remove the paddles from the oar clasps and take down the seats.
- It is necessary to remove all residual air inside the chambers before storage. Fold the boat from the front to the back to remove additional air.
- Carefully clean the boat using a mild soap and clean water. Do not use acetone, acid and/or alkaline solutions.
- Use a cloth to gently dry all surfaces. The product can be dried under direct sunlight for 1 hour or less; do not exceed this recommendation as extended sun exposure can shorten the lifespan of the boat.
- Store in a dry place, with a temperature higher than 15°C/59°F, out of reach of children.