



# 1.5L STAINLESS STEEL BLENDER

KA15SSBLNDA



# SAFETY & WARNINGS

## Save These Instructions for Future Reference

**ATTENTION!** Please handle this product with care and inspect it regularly to ensure it is in good working order.

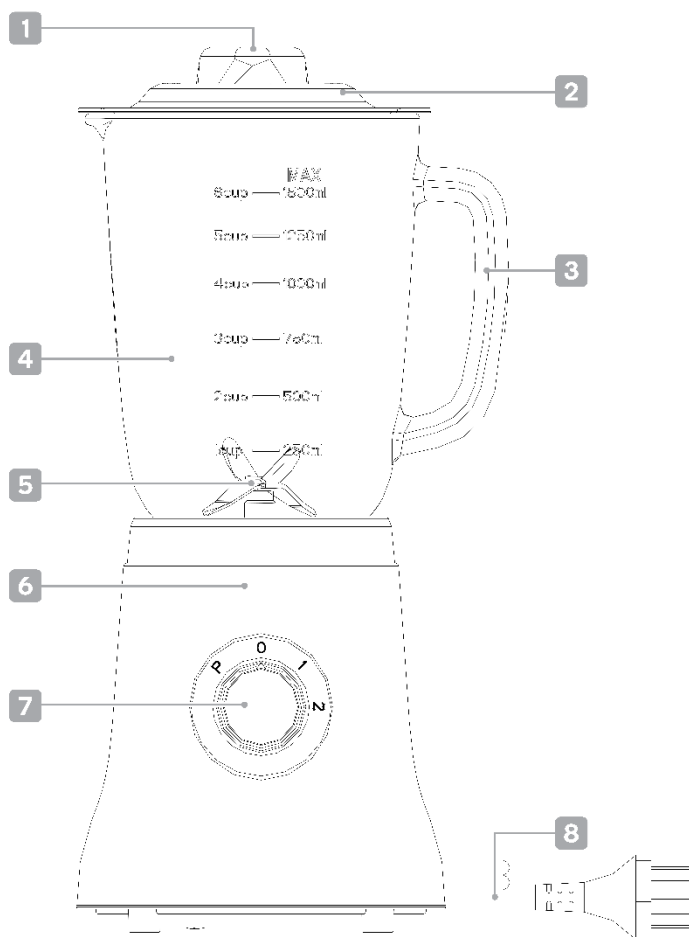
If the product, power supply cord or plug shows any signs of damage: stop use, unplug and contact Kogan.com support.

Before using the appliance, read the below instructions in order to avoid injury or damage and to get the best results from the appliance. There is a potential risk of injuries from misuse.

- Always disconnect the appliance from the power supply if it is left unattended or before assembling, disassembling or cleaning.
- This appliance shall not be used by children. Keep the appliance and its power cord out of reach of children.
- The appliance can be used by persons with reduced physical, sensory or mental capabilities or lack of experience and knowledge if they have been given supervision or instruction concerning use of the appliance in a safe way and if they understand the hazards involved.
- If the power supply cord is damaged, it must be replaced by the manufacturer, its service agent or similarly qualified persons in order to avoid a hazard.
- Switch off the appliance and disconnect from the power supply before changing accessories or parts that move when in use.
- Care shall be taken when handling the sharp cutting blades, emptying the bowl and during cleaning to avoid personal injury.
- Before inserting the power plug into the mains socket, please check that the voltage and frequency comply with the specifications on the rating label.
- If an extension cord is used it must be suited to the power consumption of the appliance, otherwise overheating of the extension cord and/or plug may occur and this may lead to a fire.
- Ensure that the mains cable does not hang over sharp edges and is kept away from hot objects and open flames.
- Arrange the longer cord so that it will not drape over a countertop or tabletop where it can be tripped over, snagged or pulled on unintentionally (especially by children).
- Do not immerse the appliance or the mains plug in water or other liquids. There is a risk of electric shock.
- To remove the power plug from the mains socket, pull the plug. Do not pull the cord.

- Do not touch the appliance if it falls into water. Instead, remove the plug from its socket.
- Do not plug or unplug the appliance from the electrical outlet with a wet hand.
- Never attempt to open the housing of the appliance or to repair the appliance yourself. This could cause an electric shock.
- Children are unable to recognize the hazards associated with incorrect handling of electrical appliances. Therefore, children should never use electric household appliances unsupervised.
- Never leave the appliance unattended during use.
- This appliance is only designed for domestic use.
- Do not use the appliance for anything other than its intended use.
- Do not wind the power cord around the appliance and do not bend the power cord.
- The use of accessory attachments not recommended by Kogan.com may cause injuries.
- The blade is sharp. Please be careful when you wash it.
- The use of attachments (including canning jars) not recommended for use with or sold by the Kogan.com for use with this product may cause a risk of injury to persons.
- Assemble the blade base with the blending cup tightly, otherwise, it will leak.
- Never put the blade on the motor base directly when use.
- Do not touch moving parts (such as the blade) while the product is in use.
- Never put hot ingredients (above 65°C) into the blending cup.
- Please remove all hard kernels and seeds from fruit before blending.
- There is an overheat protection system in the motor, it will activate if the motor overheats. You should turn off the power if this activates and wait for the machine to cool down completely.
- Be careful of pouring hot liquid into the blender as it can be ejected out of the appliance and cause burns.

# OVERVIEW



1 Measuring cup

2 Lid

3 Handle

4 1500ml blending cup

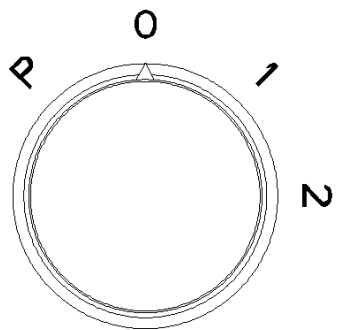
5 Blades assembly

6 Main body

7 Rotary switch

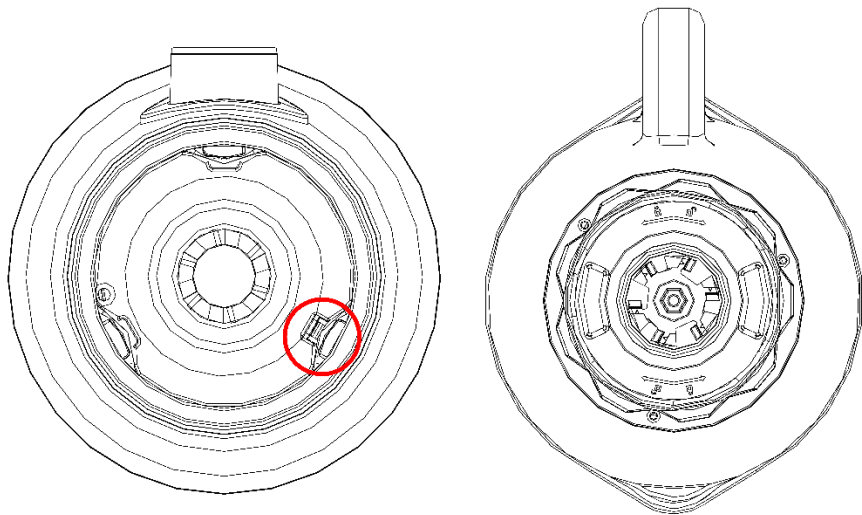
8 Power cord

**Rotary switch**



**P** = Pulse (hold in place)      **0** = Off      **1** = Low speed      **2** = High speed

**Interlock switch**

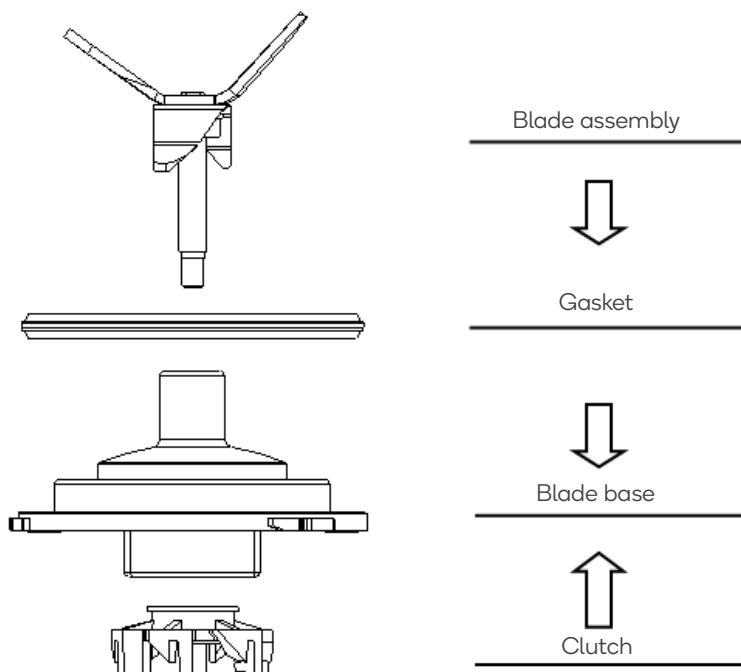


# ASSEMBLY

1. Before using the product for the first time, wash all the parts except the Main Body in warm, soapy water and then rinse and dry thoroughly. Do not wash the main body.

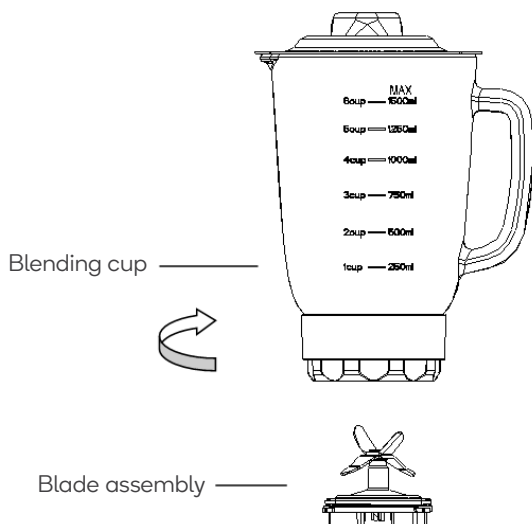
**CAUTION:** Never immerse the main body of the device in water or other liquids. Never use abrasive cleaners on any part of the product. Do not place any parts into a dishwasher or extremely hot water.

2. Place the blade assembly on the blade base and then screw it tightly.

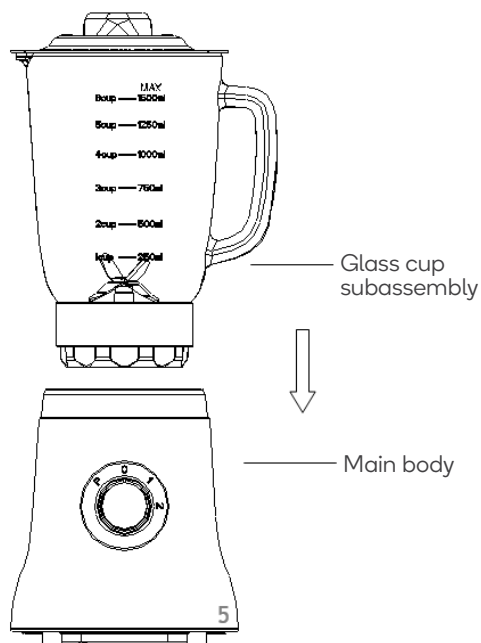


**CAUTION:** Do not forget to place the gasket.

3. Place the blade base and blade assembly into the blending cup base. Screw to tighten.



4. Place the Main Body on a flat, stable surface and then place the assembled blending cup up into the top of the Main Body and turn clockwise until it is firmly in place.





# OPERATION

**CAUTION:** Do not operate the product until it is properly assembled.

1. Ensure the product is unplugged from the electrical outlet.
2. Pour liquid ingredients into the blending cup.
3. Wash all solid ingredients and cut them into pieces small enough to fit into the blending cup. The blending cup has 1500 millilitre capacity, do not over-fill it. Overfilling may result in leaking or damage to the appliance.

## CAUTION:

- Do not use the product for mashing or grinding heavy foods (such as potatoes or meats) or to stir thick mixtures (such as dough).
- Never operate the product empty.

4. After filling the blending cup with ingredients, place the lid securely onto the cup. Ensure the measuring cup is properly fitted onto the lid.
5. Plug the product into an electrical outlet (220-240V ~AC).
6. Turn the rotary switch to the desired speed (1 Low, or 2 High), or hold the switch in the "P" position for Pulse mode.

## Note:

If the blades are not operating smoothly, stop the product and add some liquid or reduce the contents in the cup.

7. When blending is complete, turn off the product by turning the switch to the "0" (Off) position, then unplugging the product from the electrical outlet.
8. Only when the blades have stopped spinning can the blending cup can be removed from the main body.

**WARNING:** Always unplug the product when it is not in use or will be left unattended.

# CLEANING & CARE

**WARNING:** Before disassembling the product for cleaning, ensure the Blades have completely stopped and use caution when attaching or detaching them, as they are extremely sharp.

**WARNING:** Always ensure the product is unplugged from the electrical outlet before relocating, assembling, disassembling or cleaning it.

- Children should be supervised to ensure that they do not play with the appliance.
- Always clean the product immediately after each use.
- Wash all parts except the main body in warm, soapy water and then rinse and dry thoroughly. Never immerse the motor housing in water or other liquids. Never use abrasive cleaners on any part of the product. Do not place any parts into a dishwasher or extremely hot water.
- Store the product in a cool, dry place.

## Disassembly:

- To disassemble the blending cup for thorough cleaning, turn the blade base counter-clockwise and remove it, then remove the blades and the gasket from the blending cup.
- Use a small brush (not included) to remove particles of food lodged underneath the blades.
- To reassemble, replace the gasket and the blades into the bottom of the blending cup, then turn the blade base clockwise to tighten onto the blending cup (refer to the Assembly page).

## Caution:

- Care shall be taken when handling the sharp cutting blades, emptying the bowl and during cleaning.
- Switch off the appliance and disconnect from supply before changing accessories or approaching parts that move in use.
- If the supply cord is damaged, it must be replaced by the manufacturer, its service agent or similarly qualified persons in order to avoid a hazard.

## Disposal



This marking indicates that this appliance should not be disposed with other household wastes. To prevent possible harm to the environment or human health from uncontrolled waste disposal, recycle it responsibly to promote the sustainable reuse of material resources.

# SPECIFICATIONS

Max voltage	220-240V AC~
Frequency	50/60Hz
Max wattage	500W
Operating time	Blend: <3min
Intermission time	Blend: >1min
Max capacity	1500ml

### **Need more information?**

We hope that this user guide has given you the assistance needed for a simple set-up. For the most up-to-date guide for your product, as well as any additional assistance you may require, head online to **help.kogan.com**

kogan.com