



MODEL NO. RPJ205-COMBO_PL Home Theater Projector

INSTRUCTION MANUAL



PLEASE READ BEFORE OPERATING THIS EQUIPMENT

This product has been manufactured and sold under the responsibility of Curtis International Ltd. RCA, the RCA logo, the two dogs (Nipper and Chipper) logo, are registered trademarks or trademarks of Technicolor (S.A.) or its affiliates and are used under license by Curtis International Ltd. Any other product, service, company, trade or product name and logo referenced herein are neither endorsed nor sponsored by Technicolor (S.A.) or its Affiliates.

Ideal for dark viewing environments for optimal performance.
Please note: Projector brightness is measured in ANSI lumens.
Your viewing environment is the deciding factor on how many lumens your projector needs.

Important Safety Instructions

1. Read these instructions.
2. Keep these instructions.
3. Heed all Warnings.
4. Follow all instructions.
5. Do not use this apparatus near water.
6. Clean only with a dry cloth.
7. Do not block any ventilation openings. Install in accordance with the manufacturer's instructions.
8. Do not install near any heat sources such as radiators, heat registers, stoves, or other apparatus (including amplifier) that product heat.
9. Protect the power cord from being walked on or pinched particularly at plugs, convenience receptacles, and the point where they exit from the apparatus.
10. Only use attachments/accessories specified by the manufacturer.
11. Unplug this apparatus during lightning storms or when unused for long periods of time.
12. Refer all servicing to qualified service personnel. Servicing is required when the apparatus has been damaged in any way, such as power-supply cord or plug is damaged, liquid has been spilled or objects have fallen into the apparatus, the apparatus has been exposed to rain or moisture, does not operate normally, or has been dropped.
13. Use only with a cart, stand, tripod, bracket, or table specified by the manufacturer or sold with the apparatus. When a cart is used, use caution when moving the cart/ apparatus combination to avoid injury from tip-over.



Additional Warnings and Precautions

1. Do not look directly into the projector light.
2. Don't touch the project lens.
3. Mains adapter is used as disconnect device and it should remain readily operable during intended use. In order to disconnect the apparatus from the mains completely, the mains plug should be disconnected from the mains socket outlet completely.
4. **CAUTION:** Use of controls or adjustments or performance of procedures other than those specified may result in hazardous radiation exposure.
5. **WARNING:** Changes or modified to this unit not expressly approved by the party responsible for compliance could void the user's authority to operate the equipment.
6. **WARNING:** Use of this unit near fluorescent lighting may cause interference regarding use of the remote. If the unit is displaying erratic behavior move away from any fluorescent lighting, as it may be the cause.
7. **WARNING:** Shock hazard - Do Not Open.
8. Caution and marking information is located at the rear or bottom of the apparatus.
9. **WARNING:** To reduce the risk of fire or electric shock, do not expose this apparatus to rain, moisture, dripping, or splashing.
10. Objects filled with liquids, such as vases, shall not be placed on the apparatus.

FCC Warning

Any Changes or modifications not expressly approved by the party responsible for compliance could void the user's authority to operate the equipment. This device complies with Part 15 of the FCC rules. Operation is subject to the following two conditions: (1) this device may not cause harmful interference, and (2) this device must accept any interference received, including interference that may cause undesired operation. **NOTE:** This equipment has been tested and found to comply with the limits for a Class B digital device, pursuant to Part 15 of the FCC Rules. These limits are designed to provide reasonable protection against harmful interference in a residential installation. This equipment generates, uses, and can radiate radio frequency energy and, if not installed and used in accordance with the instructions, may cause harmful interference to radio communications. However, there is no guarantee that interference will not occur in a particular installation. If this equipment does cause harmful interference to radio or television reception, which can be determined by turning the equipment off and on, the user is encouraged to try to correct the interference by one or more of the following measures:

- Reorient or relocate the receiving antenna.
- Increase the separation between the equipment and receiver.
- Connect the equipment into an outlet on a circuit different from that to which the receiver is connected.
- Consult the dealer or an experienced radio/TV technician for help.
- This equipment complies with FCC radiation exposure limits set forth for an uncontrolled environment.
- This equipment should be installed and operated with minimum distance 20cm between the radiator & your body. This transmitter must not be co-located or operating in conjunction with any other antenna or transmitter.

In The Box

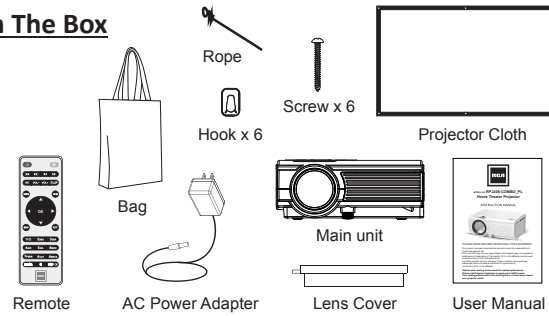
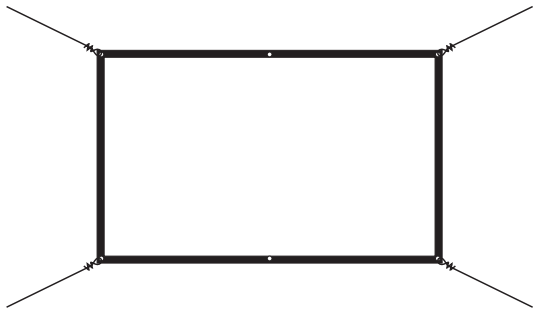


Table of Contents

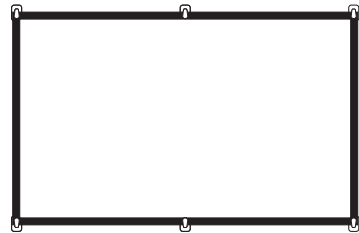
Important Safety Instructions	P1
Additional Warnings and Precautions	P2
FCC Warning	P3
In The Box	P3
Table of Contents	P4
Install Projector Cloth	P5
Remove & Close The Lens Cover	P6
Placing of Your Projector	P6
To Reduce Image Distortion	P7
Distance Between The Projector And Screen	P7
Installing your Projector in the Ceiling	P7
Adjust the Vertical Location	P8
Adjust the Focus And Keystone	P8
Controls of Remote	P9
Install / Remove Battery Of Remote	P9
Controls of Projector	P10
Install Power Adapter	P11
Main Button Operation	P11
Connect HDMI Show The Image On Projector Screen	P12
Connect AV Show The Image On Projector Screen	P12
Connect VGA Show The Image On Projector Screen	P13
Connect Audio Output (Aux Out / Line Out / Earphones)	P14
Install USB Device And TF card (Micro SD card)	P14
Using TF Card and USB Playback (Media Player)	P15
Using Projector Menu 1	P16
Using Projector Menu 2	P17
Using Projector Menu 3	P18
Specifications	P19
Warranty Card	P20

Install Projector Cloth

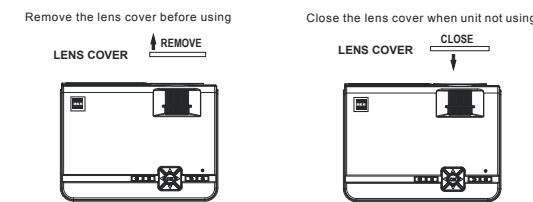
There are two methods to install projector cloth, please see below:
Method 1:
Tie each corner of the projection cloth with a rope (included) and tie it on the wall as shown in the figure.



Method 2:
Paste the six hooks (included) on a smooth wall. The distance between the hooks is the same as the hole position of the projection cloth. After the hooks are pasted, hang the projector cloth as shown in the figure.

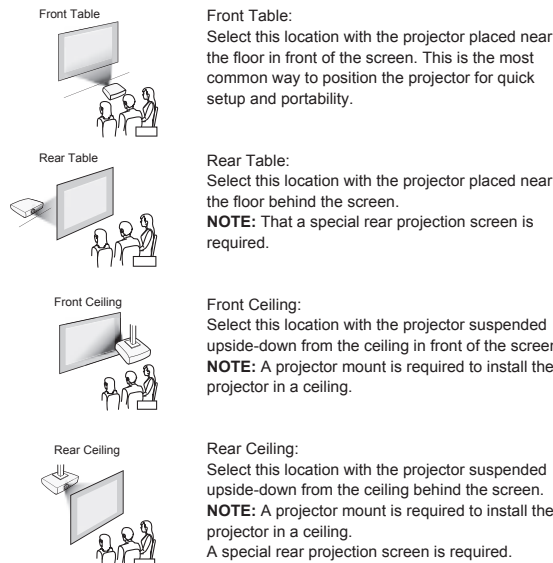


Remove & Close The Lens Cover



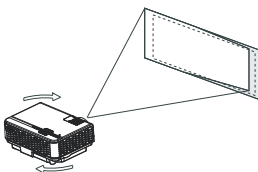
Placing Your Projector

Your projector can be installed in four different configurations (see picture below):



To Reduce Image Distortion

- Move the projector as close to the center of the screen as possible.
- The light beam from the projector should be perpendicular to the screen for a rectangular square image.



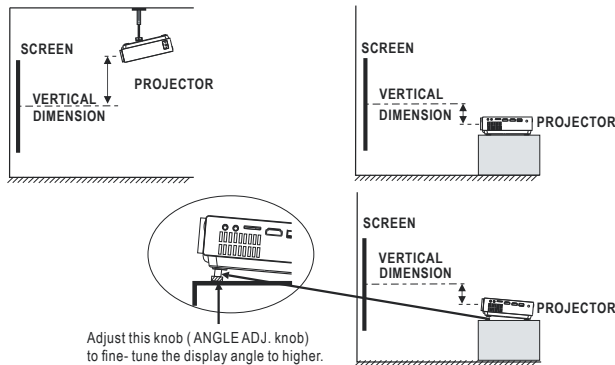
Distance Between The Projector And Screen

Measure the distance between the projector and where you want to position the screen. This is the projection distance.

Distance	Screen Size
1.16m	37 inch
1.35m	45 inch
1.51m	50 inch
1.81m	60 inch
2.15m	72 inch
2.75m	100 inch
3.43m	120 inch
4.24m	150 inch

Adjust The Vertical Location

Follow below picture to adjust the vertical location.

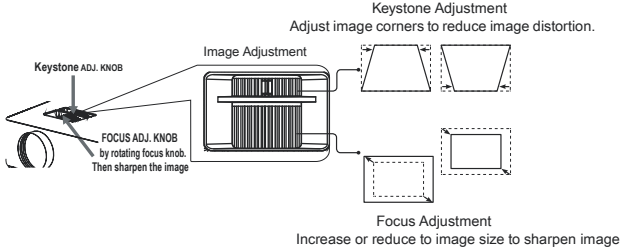


Adjust The Focus And Keystone

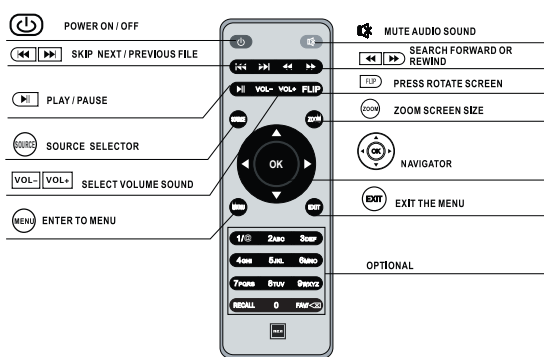
Follow below picture to adjust the focus and trapezoidal screen.

Adjust the focus by turning the knob while observing the image pixels near the center of the screen. Optimal focus is obtained when the pixels are clearly visible. Depending on the projected screen size, the focus near the screen edges may be less sharp than the screen center.

Keystone image is created when the projector lens is projected from above or below the center of the screen. Keystone correction restores the distorted image to a rectangular or square shape.



Controls Of Remote

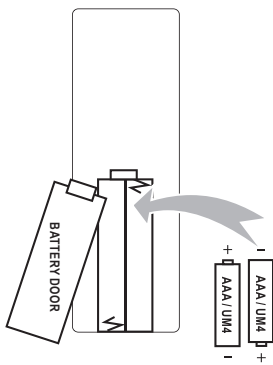


Install / Remove Battery Of Remote

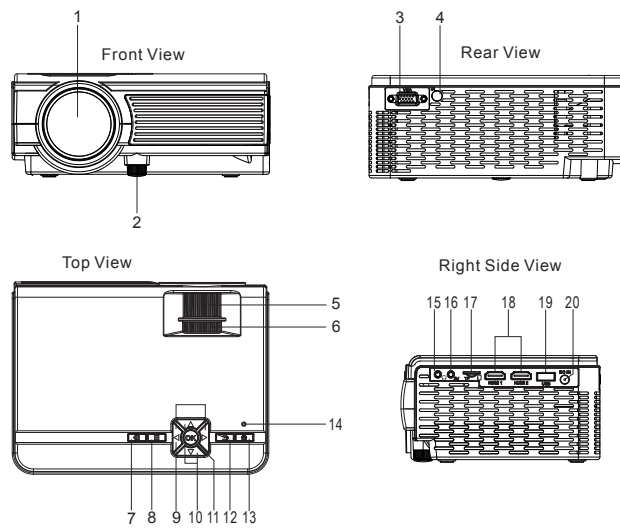
Remove the battery compartment cover on the back of your remote by carefully sliding to open. The battery cover can then be lifted away. Fit the correct batteries (not included), referring to the polarity markings. Finally, replace the cover.

NOTES:

- Batteries shall not be exposed to excessive heat such as placing under the sunlight or near a fire.
- Please make sure the batteries are installed with their correct polarities.
- Do not mix old and new batteries.
- Use only the same type of batteries.
- Do not dispose of the batteries in fire, battery may explode or leak.
- Do not recharge a non-rechargeable battery



Controls Of Projector

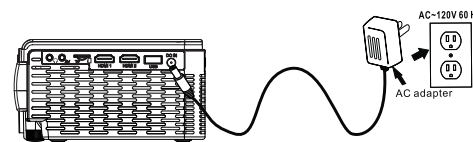


1. LENS
2. ANGEL ADJ. Knob
3. VGA IN Port
4. IR Sensor
5. FOCUS ADJ. Knob
6. KEYSTONE ADJ. Knob
7. SOURCE Button
8. MENU Button
9. Left Arrow Button
10. Up/Down Arrow Button
11. OK Button
12. RETURN Button
13. POWER Button
14. POWER Indicator
15. EAR PHONE Jack
16. AV IN Jack
17. TF Card Slot
18. HDMI 1 & 2 Ports
19. USB Port
20. DC IN Jack

Install Power Adapter

Follow below picture to connect power adapter. Connect small end of adapter **FIRST**. Plug the adapter body to power outlet.

WARNING:
Before connecting to the power supply, ensure that the supply corresponds to the information on the rating label at the back of the apparatus.

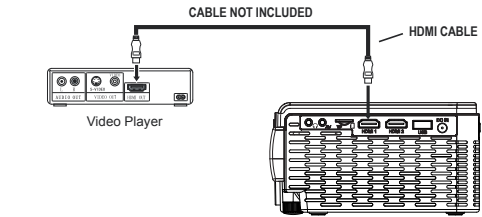


Main Button Operation

- Power - Press the button to switch on unit, press again to standby mode.
- SOURCE - Press the button to select input source.
- MENU - Press the button to enter projector menu.
- Navigation Buttons - Press the buttons to navigate and select screen item of menu.
- EXIT - Press the button to return to previous status or exit the menu.
- Rewind/Fast Forward - Press the buttons to rewind and fast search forward on USB / TF.
- Search Previous/Next File - Press the buttons to search previous or next file on USB / TF.
- VOL+ / VOL- - Press the buttons to select the sound level.
- Play/Pause - Press the button to play/pause the playback of file on USB / TF card.
- FLIP - Press the button to rotate / mirror projector screen
- ZOOM - Press the button to select image scale.
- Mute - Press to mute the audio. Press again to resume.

Connect HDMI Show The Image On Projector Screen

- Refer to the following picture to connect a set top box, a BD/DVD player or a streaming player to the HDMI input.
1. Turn off the unit before connect HDMI cable.
 2. After connection, press the button to turn on unit and power indicator will light GREEN
 3. Press the / **SOURCE** button to select HDMI 1 or HDMI 2 and press button. The video from the connected device will be shown on projector screen.
 4. Press the button to turn unit to standby.

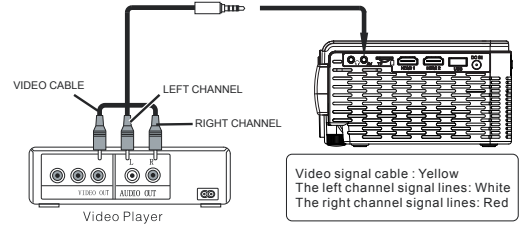


Important Note:
If there is no sound from the internal speakers when playing media contents from a set top box, BD/DVD or streaming players connecting to the HDMI input, please check the set top box or the player's digital audio settings and make sure it is set to "PCM Stereo" mode.

Note: If hot plug cause the unit hang up or malfunction, reset the unit by unplug the DC IN power jack from the rear right side of the unit. Wait for 10 seconds before reconnecting the power and turning the unit back on.

Connect AV Show The Image On Projector Screen

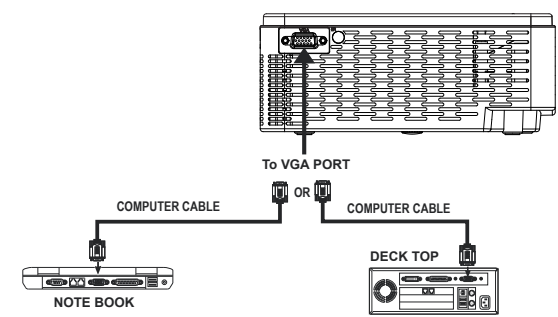
- Follow below picture to connect AV cable and device.
1. Turn off the unit before connect AV cable.
 2. After connect, press the button to turn on unit and power indicator will light GREEN
 3. Press the / **SOURCE** button to select AV mode and press button. The video of AV device will show on projector screen
 4. Press the button to turn the unit to standby.



12

Connect VGA Show The Image On Projector Screen

- Follow below picture to connect VGA cable and device.
1. Turn off the unit before connect VGA cable.
 2. After connect, press the button to turn on unit and power indicator will light GREEN
 3. Press the / **SOURCE** button to select VGA mode and press button. The video from the connected device will show on projector screen
 4. Press the button to turn the unit to standby.



Please refer to the following table to adjust the output signal from computer

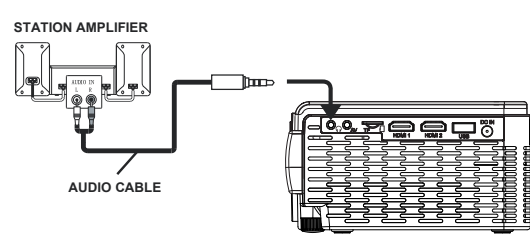
Type	Resolution	Frequency	Field Frequency
PC	VGA	640x480	31.5
			60
			34.7
			70
			37.9
			72
			37.5
			75
	SVGA	800x600	31.4
			50
			35.1
			56
			37.9
	XGA	1024x768	46.6
			70
			48.1
			72
			46.9
			75
			40.3
			50
			48.4
			60
			56.5
			70

- NOTE:**
1. VGA connections do not support audio. You will need to use the laptop or computer's connected speakers.
 2. If hot plug cause the unit hang up or malfunction, reset the unit by unplugging the DC IN power jack from the rear right side of the unit. Wait for 10 seconds before reconnecting the power and turning the unit back on.

13

Connect Audio Output (Aux Out / Line Out / Earphones)

- Follow the below picture to connect audio cable and device.
1. Turn off the unit before connect an audio cable.
 2. After connect and turn on both units. Your projector sound from external device now.
 3. After using , turn off both unit

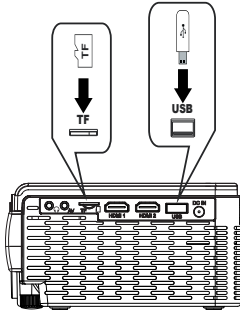


Important Note:
If there is no sound from the stereo audio output when playing media contents from a set top box, BD/DVD or streaming players connecting to the HDMI input, please check the set top box or the player's digital audio settings and make sure it is set to "PCM Stereo" mode.

Install USB Device And TF card (Micro SD Card)

Follow the below picture to install USB / TF card

Turn off the unit before connect USB / TF card.



14

Using TF Card And USB Playback (Media Player)

Install USB / TF device:

1. Press the power button to turn off the unit before install USB / TF card.
 2. Install the USB device into USB port / Install the TF device into TF slot.
 3. After connect, press the button to turn on unit and the power indicator light GREEN.
 4. Press the / **SOURCE** button to select Media and press button. Then go to Home screen to search PHOTO / MUSIC / MOVIE / TEXT icon
Note: if on the Home screen, use buttons to search the PHOTO / MUSIC / MOVIE / TEXT icon.
After selection, press the button to select C and press button.
Note: if both USB device and TF card install, unit will assign first install device as C and last install device as D.
 6. Use buttons to search the correct file to wait for a while for preview playback.
Press the button or button of the remote to start playback file.
 7. Press button to fast search rewind or forward.
 8. Press button to search previous or next file.
 9. During playback, press the button pause and press again to resume.
- NOTE:** Remove USB / TF device, press the button twice to standby mode FIRST.

Sub-Menu on Photo screen	
1. When photo playback, press the button and more function screen show on lower (figure 1).	Figure 1.
2. Use the button to select icon and press the button to play special function.	
Sub-Menu on Music screen	
1. When music playback, press the button and more function screen show on lower (figure 2).	Figure 2.
2. Use the button to select icon and press the button to play special function.	
Sub-Menu on Movie screen	
1. When movie playback, press the button and more function screen show on lower (figure 3).	Figure 3.
2. Use the button to select icon and press the button to play special function.	
Sub-Menu on Text screen	
1. When text playback, press the button and more function screen show on lower (figure 4).	Figure 4.
2. Use the button to select icon and press the button to play special function.	

Note: If hot plug cause the unit hang up or malfunction, reset the unit by unplugging the DC IN power jack from the rear right side of the unit. Wait for 10 seconds before reconnecting the power and turning the unit back on.

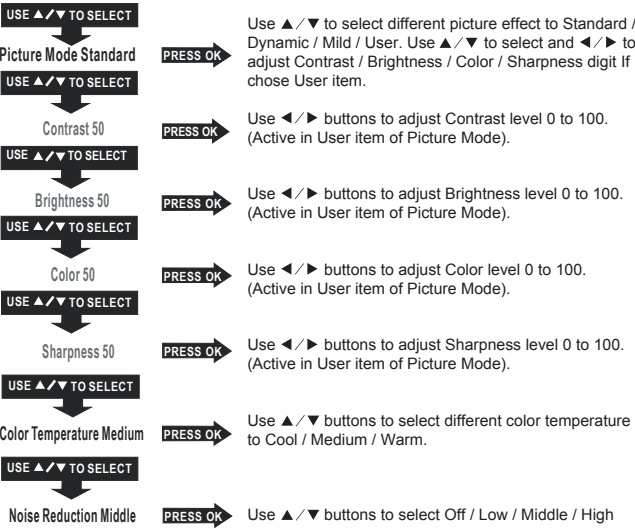
15

Using Projector Menu 1

Press / **MENU** button to enter projector menu.

Picture Mode	Standard
Contrast	50
Brightness	50
Color	50
Sharpness	50
Color Temperature	Medium
Noise Reduction	Middle

This **Picture** menu showed on right upper of view screen.



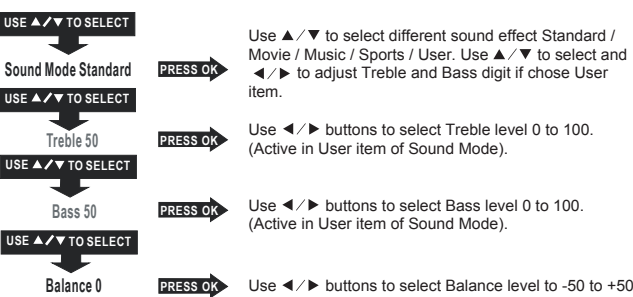
16

Using Projector Menu 2

Press / **MENU** button to enter projector menu, press / buttons to select **SOUND** menu.

Sound Mode	Standard
Treble	50
Bass	50
Balance	0

This **SOUND** menu showed on right upper of view screen.



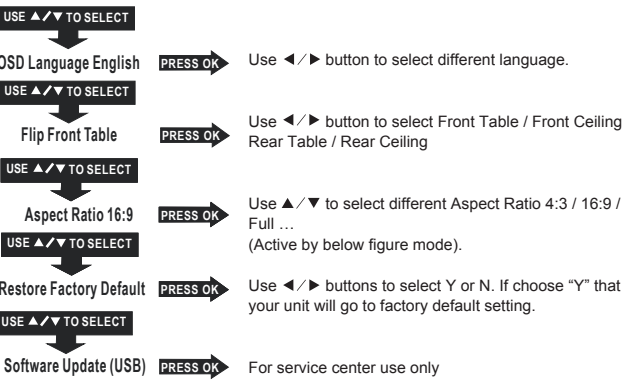
17

Using Projector Menu 3

Press / **MENU** button to enter projector menu, press / buttons to select **OPTION** menu.

OSD Language	English
Flip	Front Table
Aspect Ratio	16:9
Restore Factory Default	
Software Update (USB)	

This **OPTION** menu showed on right upper of view screen.



Aspect Ratio	
AV mode	4:3, 16:9, Full, Zoom1, Zoom2, Panorama
HDMI mode	4:3, 16:9, Full, Zoom1, Zoom2, Panorama, Just Scan
VGA mode	4:3, 16:9, Full
USB / TF input (movie mode)	4:3, 16:9, Full, Zoom1, Zoom2, Panorama, Just Scan

18

Specifications

Light Source Type	LED
Brightness Output	White light output ANSI IDMS V1.03 SECTION 15.3 33 LMS White brightness output ANSI IEC/ISO 21118 33.1LMS
Display Native Resolution	800 x 480 RGB
HDMI Input Supported	1080p , 1080i , 720p, 576i , 480p, and 480i
Video Resolution.	
Power Consumption	45W
Included Adapter	Input AC100-240V,50/60Hz
Connect DC input of unit	Output DC12V, 4A
Projection Size	37-150 inch
Input Port	AV/ VGA / HDMI X 2
USB Port	Support USB device up to 32GB Support format Mpeg1, Mpeg2, Mpeg4, mp3, Jpeg
TF Card	Support TF card up to 32GB Support format Mpeg1, Mpeg2, Mpeg4, mp3, Jpeg
Net Weight (unit)	0.95 KG
Product Dimensions	200 x 154 x 83 mm

Specifications are typical, individual units might vary. They are subject to continuous improvement without notice and without incurring any obligation.

For service assistance and product information, please call: 1-800-968-9853.
Pour obtenir assistance et information appelez: 1-800-968-9853.
Curtis International Ltd.
7045 BECKETT DRIVE, UNIT 15,
MISSISSAUGA, ON, L5S 2A3
www.curtisint.com

19

To make a warranty claim, please email support@curtiscs.com or call 1-800-968-9853.

90 day Warranty

This product is warranted to be free from defects in material and workmanship for a period of ninety (90) days from the date of original purchase. During this period, your exclusive remedy is repair or replacement of this product or component found to be defective, at our option; however, you are responsible for all costs associated with returning the product to us. If the product or component is no longer available, we will replace with a similar one of equal or greater value. Prior to a replacement being sent, the product must be rendered inoperable or returned to us.

This warranty does **not** cover glass, filters, wear from normal use, use not in conformity with the printed directions., or damage to the product resulting from accident, alteration, abuse, or misuse. This warranty extends only to the original consumer purchaser or gift recipient. Keep the original sales receipt, as proof of purchase is required to make a warranty claim. This warranty is void if the product is used for other than single-family household use or subjected to any voltage and waveform other than as on the specified rating on the label (e.g., 120V-60Hz).

We exclude all claims for special, incidental, and consequential damages caused by breach of express or implied warranty. All liability is limited to the amount of the purchase price. **Every implied warranty, including any statutory warranty or condition of merchantability or fitness for a particular purpose, is disclaimed except to the extent prohibited by law, in which case such warranty or condition is limited to the duration of this written warranty.** This warranty gives you specific legal rights. You may have other legal rights that vary depending on where you live. Some states or provinces do not allow limitations on implied warranties or special, incidental, or consequential damages, so the foregoing limitations may not apply to you.

For faster service, locate the model, type, and serial numbers on your appliance.

ATTACH YOUR PROOF OF PURCHASE HERE, PROOF OF PURCHASE IS REQUIRED TO OBTAIN WARRANTY SERVICE.
Please have the following information available when you contact the Support Team:

- Name, address and telephone number.
- Model number and serial number.
- A clear, detailed description of the problem.
- Proof of purchase including dealer or retailer name, address and date of purchase.

20