



Instruction Sheet

SmartPlug Instant Hot Water Control®

U.S. Patent # 8,594,853 and # 9,207,682.

102-505

SUPERSEDES: May 20, 2022

EFFECTIVE: August 10, 2022

Plant ID# 001-4240

Model#: SP115-1

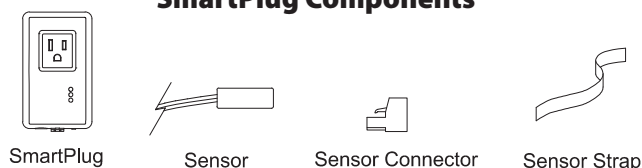
Application:

The Taco SmartPlug Instant Hot Water Control® upgrades any corded DHW circulator with intelligence and logic, always providing hot water when needed maximizing energy savings and hot water comfort.

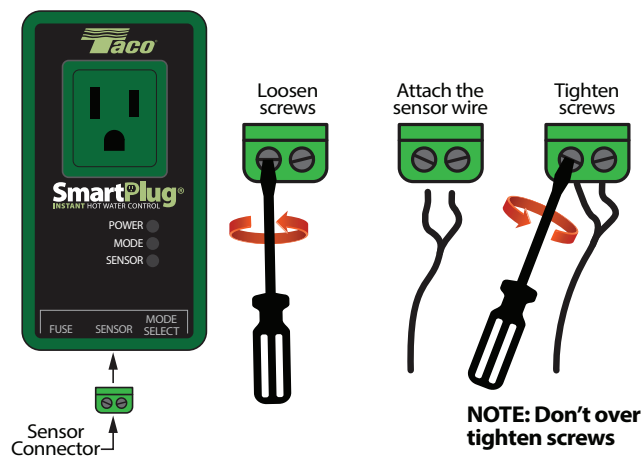
SmartPlug installation:

The SmartPlug is designed for use with standard domestic hot water circulators that have a 120V UL approved line cord. SmartPlug is safe to use on a pump with 50/60HZ and limited to 6FLA, 36LRA.

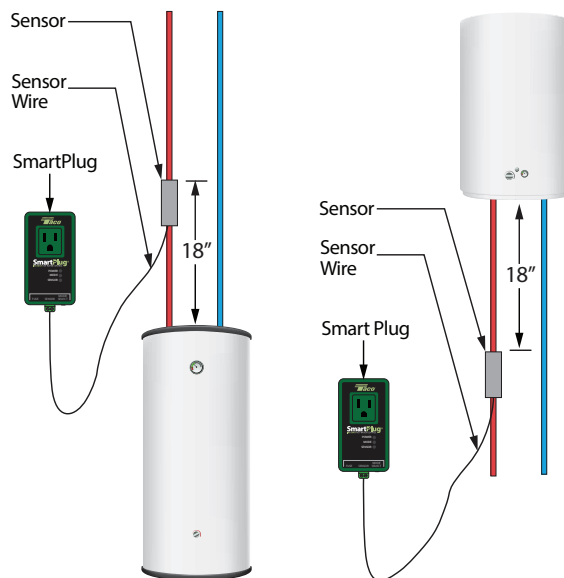
SmartPlug Components



Step 1



Step 2



WARNING: For indoor use only.

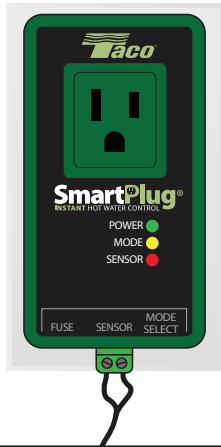
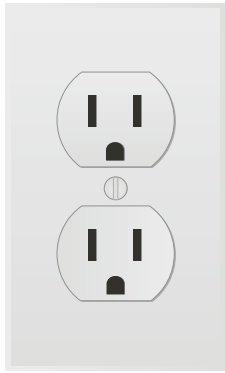


WARNING: All local plumbing and electrical codes should be followed when installing this product.



WARNING: Risk of electrical shock. This product is supplied with a grounding conductor and grounding-type attachment plug. To reduce the risk of shock, be certain that it is connected only to a properly grounded grounding-type receptacle.

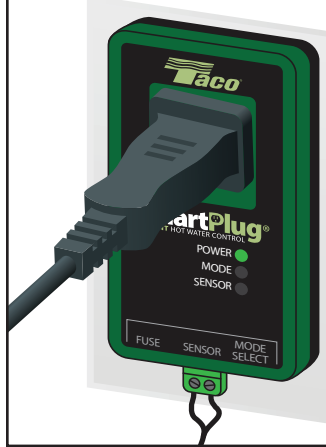
Step 3



Plug in the SmartPlug

LEDs will illuminate and a 10 second diagnostic check will begin

Step 4



Plug in the circulator cord

The green power LED will illuminate

NOTE:
The circulator must be a properly grounded 120V pump

Step 5

If circulator is equipped with a timer, turn the timer switch to full ON position. SmartPlug will turn the circulator on after a 10 minute delay.



Power on circulator, if applicable



Step 6

Setting the SmartPlug Mode:

- **Smart Mode:** Learns your hot water usage and adapts to your routines
- **Pulse Mode:** Continuously operates 5 minutes on, 10 minutes off
- **Vacation Mode:** After 36 hours of no hot water usage, will remain off until hot water usage is detected
- **Exercise function:** While in vacation mode the SmartPlug will cycle the circulator for 10 seconds every 7 days to prevent any corrosion or scale build up

"Smart" or "Pulse" mode can be selected by pressing the mode select button located on the lower right side of the control box

To set the mode, make sure the SmartPlug is plugged into a properly grounded 120V outlet

A yellow LED labeled "MODE" on the face of the SmartPlug identifies the mode selected

The SmartPlug is also provided with a red "SENSOR" LED. If the sensor is properly installed the SENSOR LED will not illuminate. If the red LED is flashing, refer to the troubleshooting section on page 3

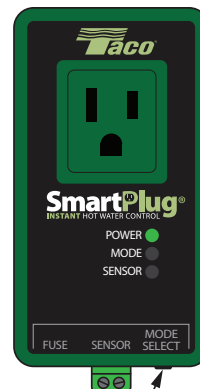
To ensure the SmartPlug is providing hot water properly, open a hot water tap at the fixture furthest away from the hot water tank

Set up complete, you are ready to enjoy hot water comfort

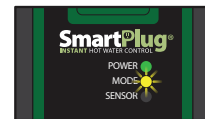


NOTE: Use CAUTION as the water may be extremely hot.

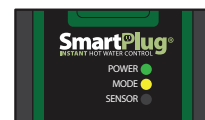
Press and release the mode select button to switch between modes



Mode Select



Blinking Yellow LED = Pulse Mode



Solid Yellow LED = Smart Mode



Flashing Red LED = Check Sensor
(Refer to the troubleshooting section)

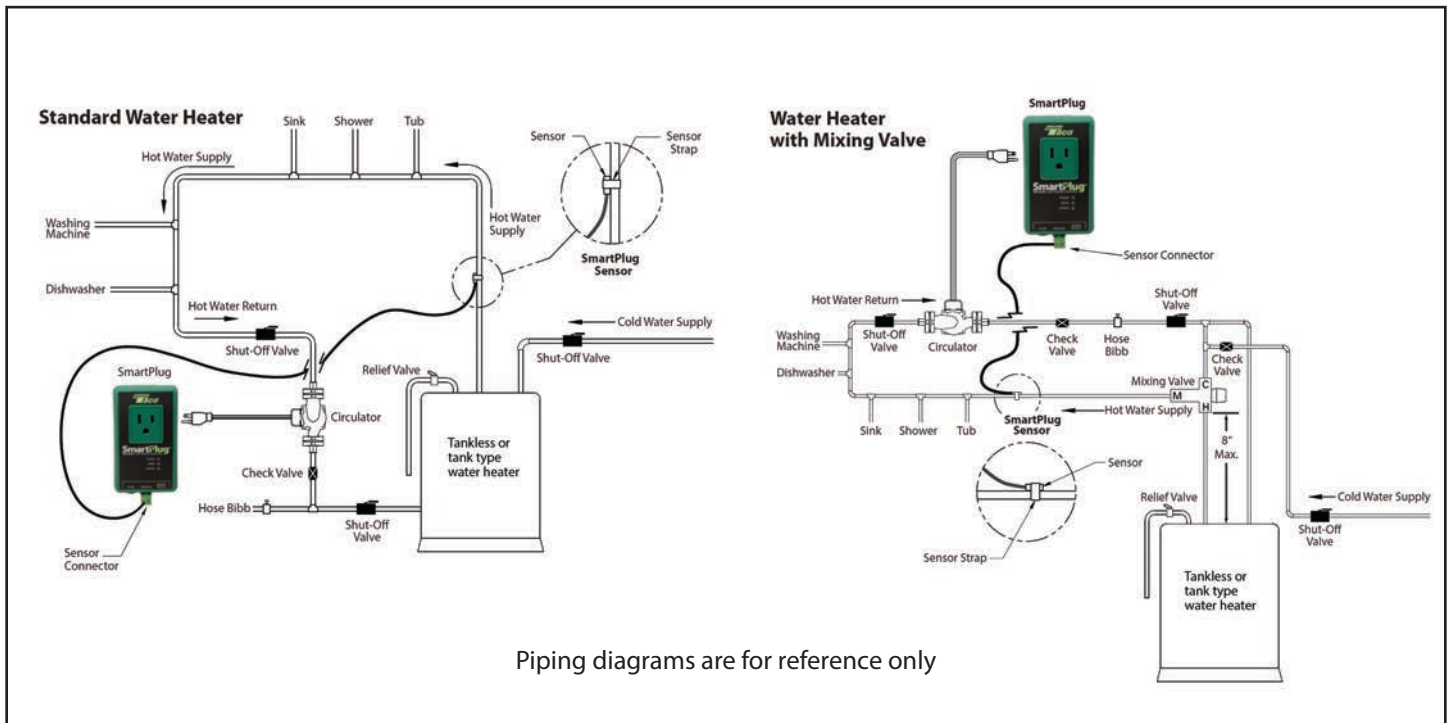
Check for hot water



TROUBLE SHOOTING

Symptom	Possible Cause	Service Tip
No Hot Water	Pump installed incorrectly	Check to see if the flow arrow on the pump casing is pointing in the right direction.
	Pump not running	-Check the circuit breaker. -Check power supply outlet. -Ensure pump is firmly plugged into SmartPlug and SmartPlug is properly plugged into electrical outlet.
	SmartPlug SENSOR error	-Red SENSOR LED blinking once every 5 seconds = sensor shorted. Use sensor replacement kit 194-3726. -Red SENSOR LED blinking twice every 5 seconds = bad sensor connection.
	SmartPlug is in Vacation mode	-Check to ensure the SmartPlug SENSOR lead is installed correctly on the hot water supply pipe. The sensor lead must be in direct contact with hot water supply pipe. -Sensor may be installed too close to the hot water tank and it may need to be moved at least 18" from the hot water tank.
	Blown fuse in SmartPlug	-Red SENSOR LED blinking 3 times every 5 seconds - Unplug SmartPlug and replace 6A, 125V fuse. Use fuse replacement kit 003-014RP.

PIPING DIAGRAMS FOR TANKLESS OR TANK TYPE WATER HEATER



FCC STATEMENT: This equipment has been tested and found to comply with the limits for a Class B digital device, pursuant to part 15 of the FCC Rules. These limits are designed to provide reasonable protection against harmful interference in a residential installation. This equipment generates, uses and can radiate radio frequency energy and, if not installed and used in accordance with the instructions, may cause harmful interference to radio communications. However, there is no guarantee that interference will not occur in a particular installation. If this equipment does cause harmful interference to radio or television reception, which can be determined by turning the equipment off and on, the user is encouraged to try to correct the interference by one or more of the following measures:

- Reorient or relocate the receiving antenna.
- Increase the separation between the equipment and receiver.
- Connect the equipment into an outlet on a circuit different from that to which the receiver is connected.
- Consult the dealer or an experienced radio/TV technician for help.



LIMITED WARRANTY STATEMENT

Taco, Inc. will repair or replace without charge (at the company's option) any Taco product which is proven defective under normal use within three (3) years from the date code.

In order to obtain service under this warranty, it is the responsibility of the purchaser to promptly notify the local Taco stocking distributor or Taco in writing and promptly deliver the subject product or part, delivery prepaid, to the stocking distributor. For assistance on warranty returns, the purchaser may either contact the local Taco stocking distributor or Taco. If the subject product or part contains no defect as covered in this warranty, the purchaser will be billed for parts and labor charges in effect at time of factory examination and repair.

Any Taco product or part not installed or operated in conformity with Taco instructions or which has been subject to misuse, misapplication, the addition of petroleum-based fluids or certain chemical

additives to the systems, or other abuse, will not be covered by this warranty.

If in doubt as to whether a particular substance is suitable for use with a Taco product or part, or for any application restrictions, consult the applicable Taco instruction sheets or contact Taco at (401-942-8000).

Taco reserves the right to provide replacement products and parts which are substantially similar in design and functionally equivalent to the defective product or part. Taco reserves the right to make changes in details of design, construction, or arrangement of materials of its products without notification.

TACO OFFERS THIS WARRANTY IN LIEU OF ALL OTHER EXPRESS WARRANTIES. ANY WARRANTY IMPLIED BY LAW INCLUDING WARRANTIES OF MERCHANTABILITY OR FITNESS IS IN EFFECT ONLY FOR THE DURATION OF THE EXPRESS WARRANTY SET FORTH IN THE FIRST PARAGRAPH ABOVE.

THE ABOVE WARRANTIES ARE IN LIEU OF ALL OTHER WARRANTIES, EXPRESS OR STATUTORY, OR ANY OTHER WARRANTY OBLIGATION ON THE PART OF TACO.

TACO WILL NOT BE LIABLE FOR ANY SPECIAL INCIDENTAL, INDIRECT OR CONSEQUENTIAL DAMAGES RESULTING FROM THE USE OF ITS PRODUCTS OR ANY INCIDENTAL COSTS OF REMOVING OR REPLACING DEFECTIVE PRODUCTS.

This warranty gives the purchaser specific rights, and the purchaser may have other rights which vary from state to state. Some states do not allow limitations on how long an implied warranty lasts or on the exclusion of incidental or consequential damages, so these limitations or exclusions may not apply to you.



Taco, Inc., 1160 Cranston Street, Cranston, RI 02920 | Tel: (401) 942-8000 | FAX: (401) 942-2360

Taco (Canada), Ltd., 8450 Lawson Road, Suite #3, Milton, Ontario L9T 0J8 | Tel: (905) 564-9422 | FAX: (905) 564-9436

Visit our web site: www.TacoComfort.com | ©2022 Taco, Inc.

