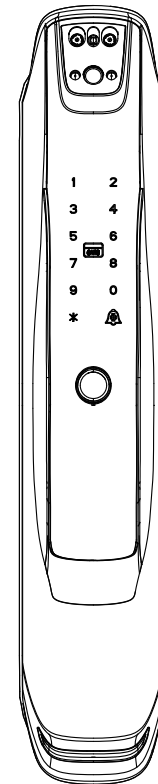


SMART LOCKS



INSTRUCTION MANUAL



MIFARE



PASSWORD



MECHANICAL KEY



APPS



FINGERPRINT

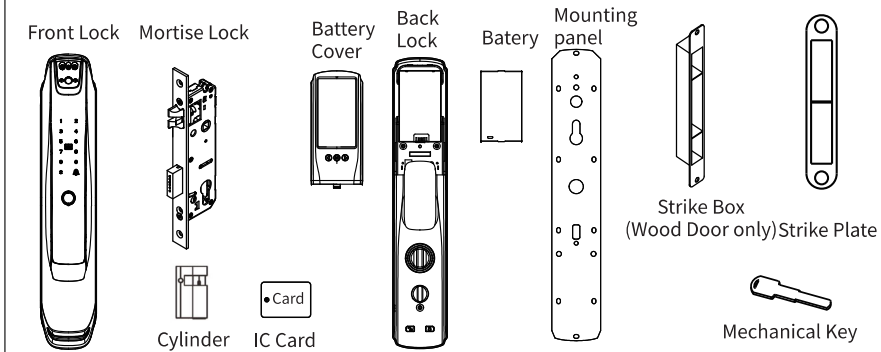
SCAN THIS QR CODE TO DOWNLOAD THE APPLICATION



OR DOWNLOAD APPS 'Tuya' ON GOOGLE PLAY OR APPSTORE

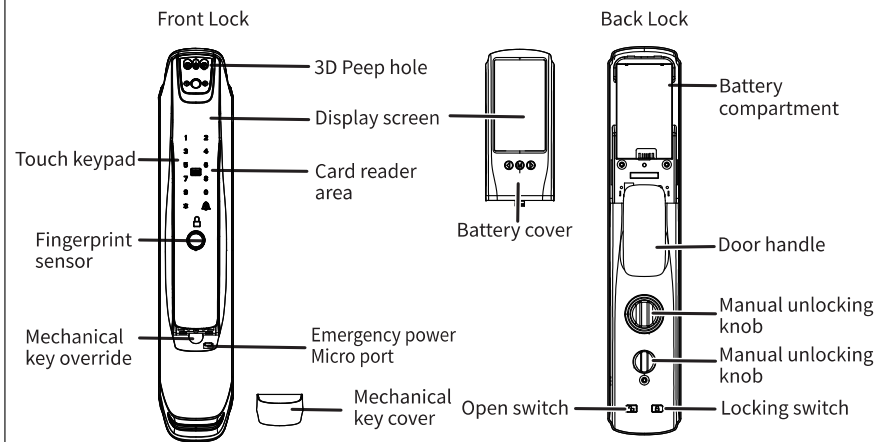


Accessory



Door thickness Quantity	Connecting Spindle	Connecting Pillar	Connecting Screw	Screw
37-39mm	8*8*75mm	4*5*35mm x 2	M4*30mm x 2	4.2*25mm X 4
40-50mm	8*8*75mm	4*5*35mm x 2	M4*45mm x 2	4.2*25mm X 4
51-60mm	8*8*90mm	4*5*45mm x 2	M4*45mm x 2	4.2*25mm X 4

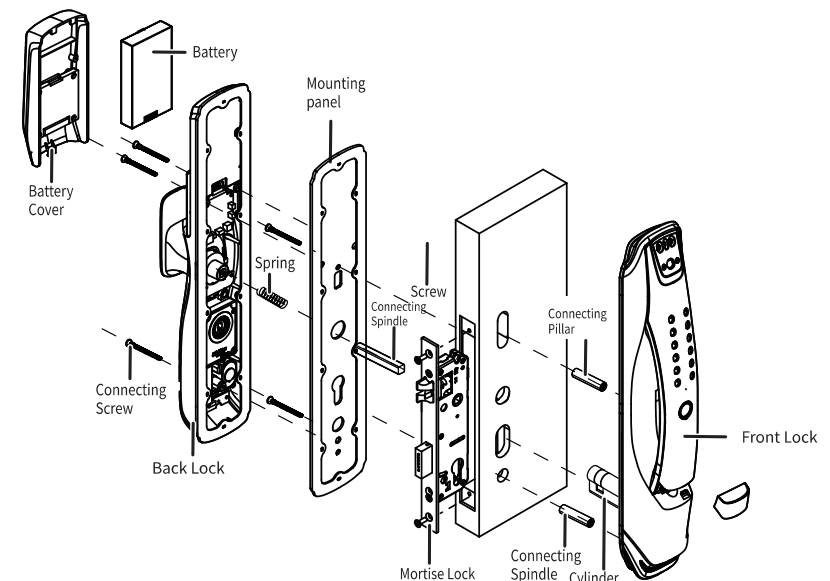
Product Overview



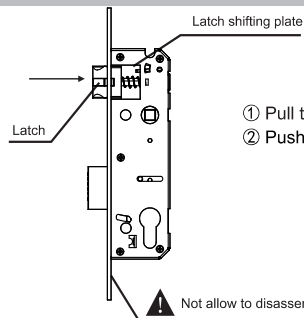
Specification

No.	Item	Specification
1	Comparison model	1: N
2	Rejection rate	<0.1%
3	False recognition rate	<0.001%
4	Fingerprint collection range	±180°
5	Card type	M1
6	User capacity	A maximum of 50 face recognition. A maximum of 50 fingerprints, A maximum of 100 groups of passwords, a maximum of 100 cards, 250 ID numbers for each user type. The administrator ID ranges from 000-009 and the common user ID ranges from 010-250
7	Operation record	600 pieces
8	Battery life	Opening times ≥3000
9	Working voltage	4.9V~6.0V, Low voltage alarm voltage ≤4.9V
10	Dynamic power consumption	≤1A (No motor action, no playing sound)
11	Static power consumption	≤100uA (average power consumption)
12	Verification time	≤3s, (including the whole process of fingerprint collection, comparison and unlocking signal output)
13	Keyboard type	Touch sensing
14	External emergency power supply	5V1A Micro USB
15	Resistance to static electricity	≥8KV (contact) ≥15KV (Non-contact)
16	Storage temperature	-25°C ~ 80°C
17	Working temperature	-25°C ~ 70°C
18	Ambient humidity	15%RH ~ 93%RH

Installation Guide



Adjust The Mortise Direction

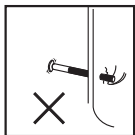


- ① Pull the Latch shifting plate to another side
- ② Push the latch into the mortise and turn 180 degree

⚠ Not allow to disassemble the face plate

Caution Before Installation

1) Do not be a strong force when installation, avoid to damaging the lock.



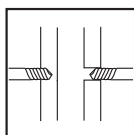
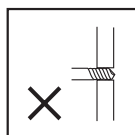
2) Use correct installation tools.



3) Wear glass to protect your eyes when drilling holes.

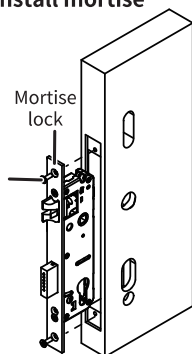


4) Drilling the door holes on both side of the door avoiding to damaging the doorplate.

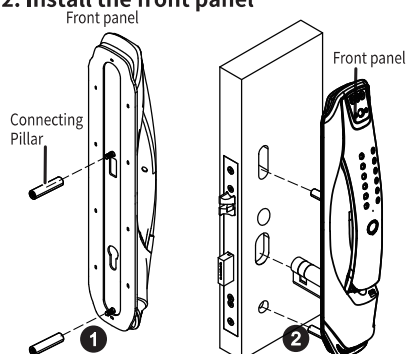


Installation

1. Install mortise

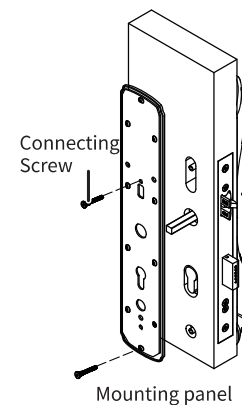


2. Install the front panel

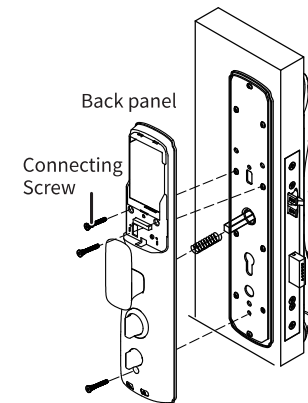


Installation

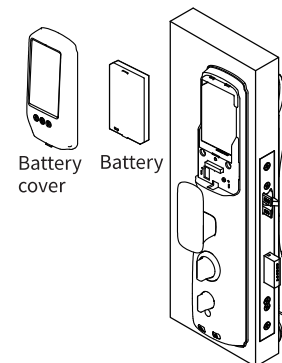
3. Install mounting panel



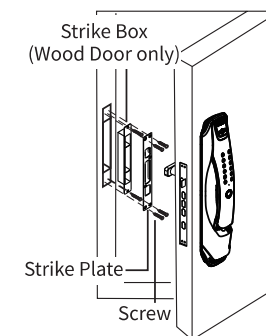
4. Install the back panel



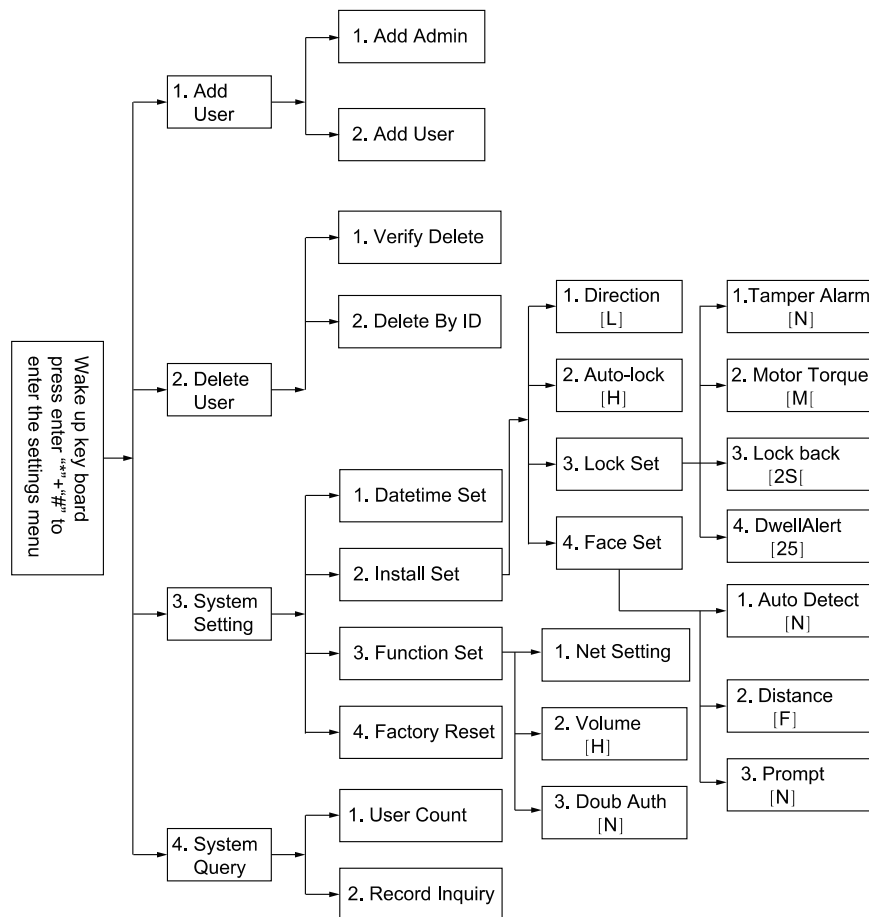
5. Install batteries



6. Install strike box & strike plate



The menu structure is shown in the figure



Check Point After Installation

1. The face plate is horizontal with the door.
2. The Latch bolt, Dead bolt and Security Bolt must works smoothly and flexibly
3. The Front lock is vertical and stable.
4. Front handle works smoothly and flexibly,
Dead bolt should be in position when you lift the handle.
5. Dead bolt should be in position when you lift the Back handle,
and it should be retracted when you press the handle.
6. Knob turns smoothly and flexibly, and Security bolt reaches out or retracts should be
together with the Knob's action.

Lock Operation Before

1. Doorbell function

Touch the buttons [A] with your fingers, Smart lock rings the doorbell immediately.

2. Restore factory settings

Long press and hold the built-in SET button on the back panel, and the voice prompt "Restore factory settings, confirm by pressing the # key, cancel by pressing the * key". Press the # key to confirm, and the system will restart to factory mode.

In the factory state, any fingerprint, password, or card can be unlocked. Performing factory settings cannot clear the already set door opening direction and torque parameters.

3. Low battery warning

If the system's battery level is less than 25%, the system will voice prompt "Low battery, please replace the battery" when unlocking. The battery can still be unlocked about 50 times, but please charge it in a timely manner (or replace the battery).

4. External USB emergency power supply

When the battery is low or out of charge, you can connect the data cable to the power bank and plug it into the USB port on the front lock body to supply power to the lock as an emergency power source.

He fully automatic USB emergency power solution uses the method of recharging the charging pool, so it takes about 30 seconds to unlock after plugging in the USB cable.

5. Illegal user alarm

Enter the wrong fingerprint, password, or card 5 times in a row, and the system prompts "Illegal user, illegal intrusion, owner notified" and locks it for 90 seconds. During this period, there will be no response to user actions. Unlock after 90 seconds.

6. Virtual password

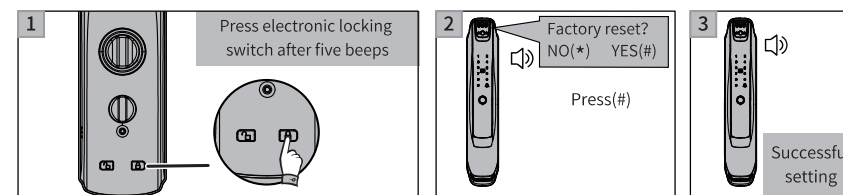
The door lock has added a digital password virtual function. When using a password to unlock, users can add numbers before and after the correct password, and press the "#" key to confirm. This can increase the security of the digital password, but the total length of the input should not exceed 16 digits.

7. View version number

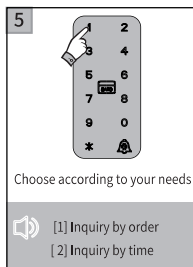
Enter 222 # to view the software version number.

Factory setting

Please note: Before you can start using this lock, you must register a new administrator. If not, you cannot configure a Wi-Fi-enabled lock. The procedure is as follows:



Lock Operation



APP configuration(Tuya smart)- optional

- 1) Search "Tuya Smart" in App Store or an App market, download and install it.
- 2) Register with your cellphone number and log in.
- 3) Click "Camera & Lock", find "Smart Gating(Wi-Fi)", click and add a device following instructions before use
- 4) Remote unlocking: Press the "#" key in sleep mode, and the system will automatically request remote unlocking and issue a prompt on the APP.

Add one network

- 1) Press "*" + "#" to authenticate administrator identity and then press "1" to access administrator settings. Then there will be a voice prompt of pressing "4" for network configuration.
- 2) At this point, open the app and follow the prompts to operate.
- 3) When the network is successfully added, a voice prompt of "successful" will appear.
- 4) If the network addition fails or the connection times out, a voice prompt of "failed" will appear.

Notice:

Please add administrator before setting

Other notes

- 1) Input the wrong password more than 5 times in a row, the keyboard locked for 180 seconds, it does not respond to any operations in 180 seconds.
- 2) Password peeping prevention function: input password as follows when opening the door with password: XXX password XXX; you can add some extraneous codes before and after the password. and then press # to confirm. The password must be included in the input contents.
- 3) If there is no operation more than 10 seconds, system will automatically exit.
- 4) After the voltage is lower than 4.8v, the lock will automatically alarm every time when it is opened. After the alarm, the lock can be opened for about 200 times.
- 5) Remove the battery cover, press the "Set" key for 6 seconds, the lock was restored to factory mode;

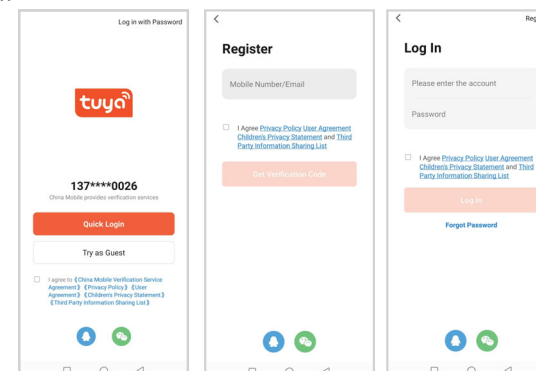
APP Operation

1. Please search for and download the "Tuya Smart" app in the app store, or scan the QR code to download it, and register an account according to the software prompts.



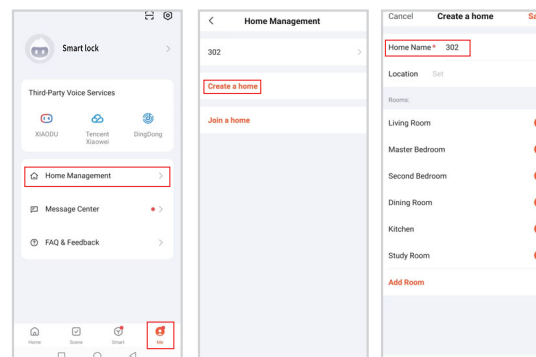
1. APP registration and login

- 1) APP registration: If you do not have an APP account, you can choose to register or log in with one click through your phone number
- 2) Click "Register" to enter the account registration page. Obtain a verification code based on your phone number or email, set a password,
- 3) If you have an existing account, click "Login" to log in to the app, password, and verification code. Support social media account login.



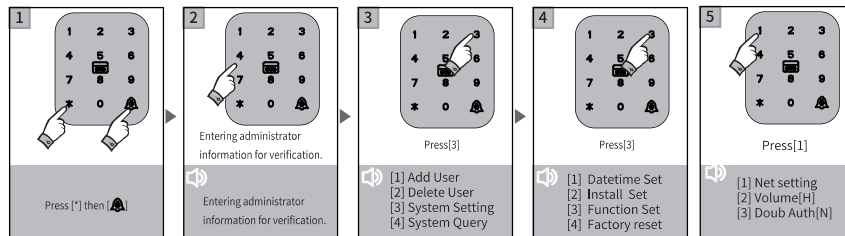
2. Creating a family

- 1) After successful registration and login, create your home by clicking on "My" - "Family Management" - "Create Family" - "Family Name" - "Save".
- 2) Each account can create and add multiple households, and devices can be grouped by rooms in the household.
- 3) The weather and other functions depend on the geographical location of the home, and it is recommended to set them in advance
- 3) After successful creation, family members can be added.



APP Operation

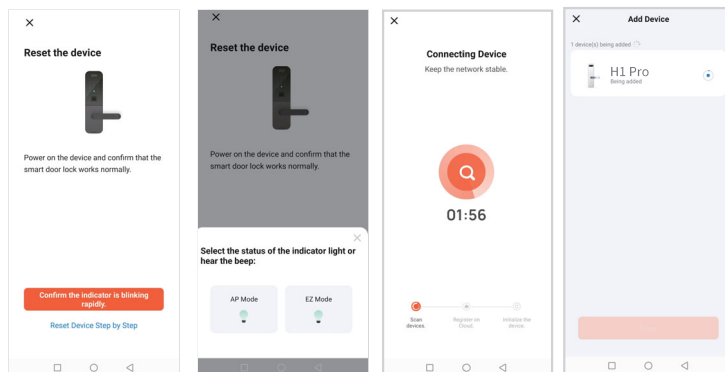
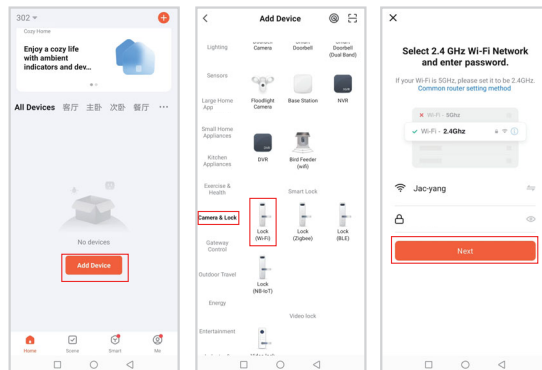
3. Networking settings: operate on the lock



At this time, the door lock has entered the distribution network state

4. Add devices

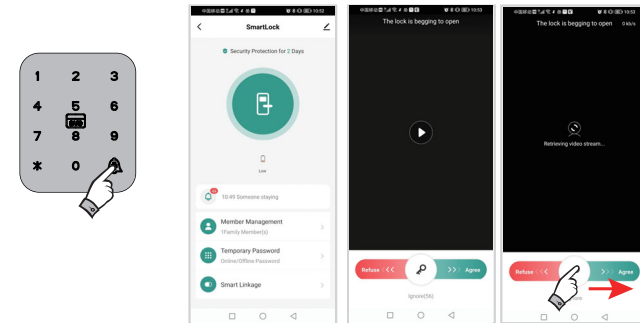
In the "Home" tab, click the "+" in the upper right corner or click the "Add Device" button in the middle of the page to enter the Add Device interface. Follow the prompts to add the device.



APP Operation

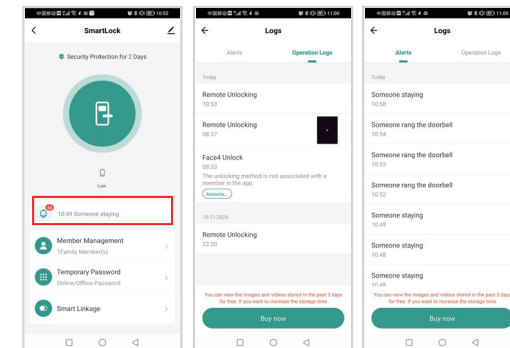
5. Remote unlocking

The homepage includes logs, Member management, Temporary password, Smart Linkage. Remote unlocking: Press "🔓" on the smart lock, and the APP will respond to the unlock request remotely. Right swipe to agree to unlock, Swipe left to refuse unlocking



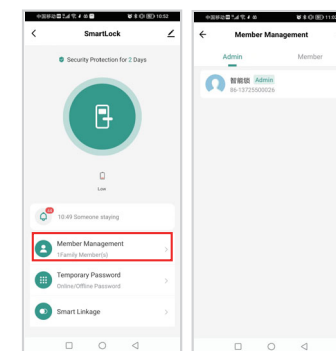
6. logs

Click on the doorbell icon to view Alerts information and operation logs.



7. Member management

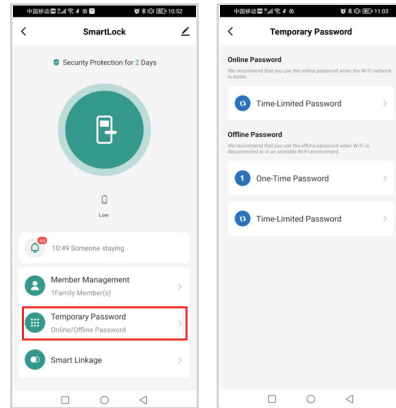
In member management, users can be added, deleted, and modified. Only the administrator user of the APP can perform this operation.



APP Operation

8. Temporary password

Set temporary password, can set Online Password: Time-limited Password;
Offline password: one-Time Password,
Time-Limited Password.



FCC Statement

This equipment has been tested and found to comply with the limits for a Class B digital device, pursuant to part 15 of the FCC Rules.

These limits are designed to provide reasonable protection against harmful interference in a residential installation. This equipment generates, uses and can radiate radio frequency energy and, if not installed and used in accordance with the instructions, may cause harmful interference to radio communications. However, there is no guarantee that interference will not occur in a particular installation. If this equipment does cause harmful interference to radio or television reception, which can be determined by turning the equipment off and on, the user is encouraged to try to correct the interference by one or more of the following measures:

- Reorient or relocate the receiving antenna.
- Increase the separation between the equipment and receiver.
- Connect the equipment into an outlet on a circuit different from that to which the receiver is connected.
- Consult the dealer or an experienced radio/TV technician for help.

This device complies with part 15 of the FCC Rules. Operation is subject to the following two conditions:

- (1) This device may not cause harmful interference, and
- (2) this device must accept any interference received, including interference that may cause undesired operation.

Any changes or modifications not expressly approved by the party responsible for compliance could void the user's authority to operate the equipment.

This equipment complies with FCC radiation exposure limits set forth for an uncontrolled environment. The device has been evaluated to meet general RF exposure requirement. The device can be used in portable exposure condition without restriction.