



## DI SPOT-FREE Car Rinse PLUS

Model #540710

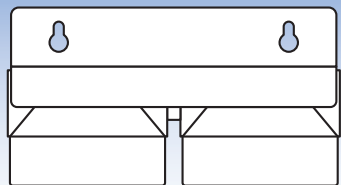


### USER MANUAL -

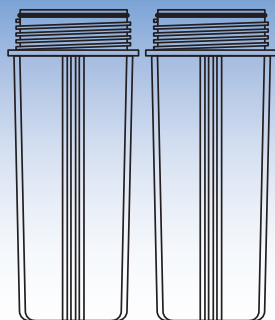
Read Carefully Before Using Product

For technical assistance or warranty info,  
contact Aquatic Life at  
[customersupport@aquaticlife.com](mailto:customersupport@aquaticlife.com)

## CONTENTS



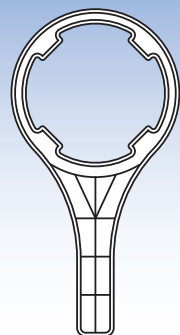
Dual DI Housing with Mounting Bracket



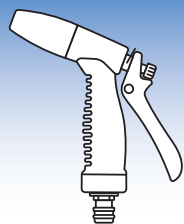
(2) Clear Canisters



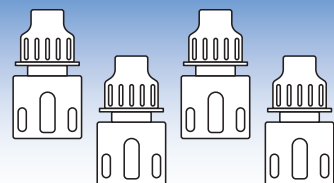
(2) Color-Changing Deionization Cartridges



Cartridge Wrench



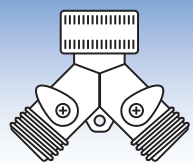
Misting Nozzle



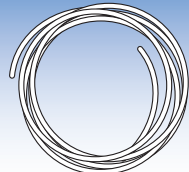
(4) Quick-Connect Couplers



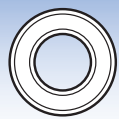
(2) 1/2" Rubber Washers



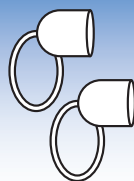
Hose Splitter



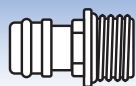
50' Roll of Tubing



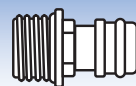
Plumber's Tape



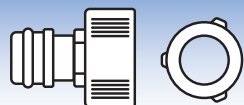
(2) Rubber Caps



1/2" MPT Quick-Connect w/ 0.75 GPM Flow Restrictor (Black)



1/2" MPT Quick-Connect (White)



3/4" Quick-Connect Garden Hose Adapter w/ Washer

## BASICS OF PRODUCING SPOT-FREE WATER

Water quality is often measured by the amount of total dissolved solids (TDS) in the water. It is the TDS in the water that leaves spots on a vehicle when the water evaporates. By removing the TDS, a spot-free rinse is achieved.

Removing TDS is accomplished by filtering the water through resin at a reduced flow rate. As the water slowly passes through the resin, the TDS is absorbed, and the resin changes to a tan color. When the entire resin has changed color, it is time to replace the DI cartridge.

The only way to know how long your cartridges will last is to know the TDS of your tap water. A simple TDS meter can be used measure the water.



Aquatic Life TDS Meter

Item # 270652

SCAN CODE to go to purchase page.



## USING TDS TO ESTIMATE SPOT-FREE WATER PRODUCTION

Water	TDS Reading	Average Spot-Free Water Produced (Gallons)	Average Spot-Free Rinses (Vehicle Rinses)
Soft	<100 TDS	36-40	9-10
Medium	100-250 TDS	16-36	4-9
Hard	250-400 TDS	10-14	2-3
Very Hard	400-450 TDS	4-9	1-2

Summary: The more minerals (TDS) in your tap water, the fewer spot-free rinses.

## FAST FLOW = SPOTS ON YOUR VEHICLE

Your Clearly MaD Spot-Free Rinse is designed for a flow rate of 0.75 gallons per minute. This gives the resin time to absorb the TDS in the water.

**This is not a lot of flow**, but you don't need a lot of flow to rinse the regular water off the vehicle. You only need a fine mist of spot-free water to avoid spots.

If you want to use a pressure washer, keep in mind the flow rate should be 0.75 gallons per minute or less, and the power washer needs to be connected on the output (filtered) side of the unit.

**NEVER PUSH WATER THROUGH THE FILTER WITH A PRESSURE WASHER.**

## INSTALLATION INSTRUCTIONS



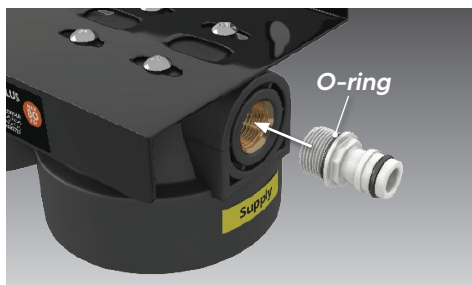
### Installation Instructions



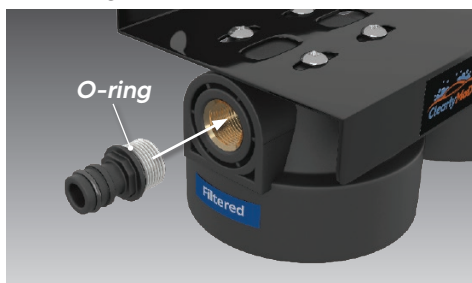
- 1 Apply three wraps of the pipe tape to each of the Quick-Connect Fittings.



- 2 Thread the **WHITE** Quick-Connect Fitting into the **SUPPLY** port. With a built-in o-ring, the fitting only needs to be hand-tightened.



- 3 Thread the **BLACK** Quick-Connect Flow Restrictor Fitting into the **FILTERED** port. With a built-in o-ring, the fitting only needs to be hand-tightened.



- 4 Mount the unit as close as possible to the water supply. Mount to a secure surface using appropriate mounting screws. Leave the screws extending about 1/8" from the surface and hang the metal bracket on the screws.

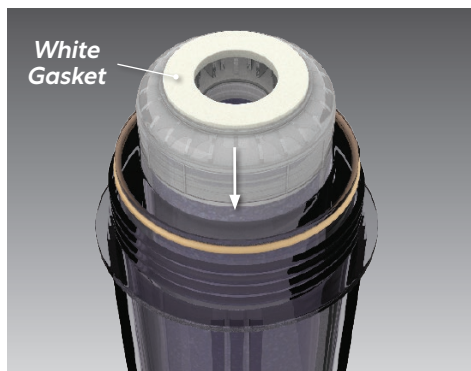


**WARNING: DO NOT** mount the unit outside or in a direct sunlight area.



## INSTALLING THE CARTRIDGES

- 1 Remove the resin cartridges from the wrappers and center them in the clear canisters with the white gasket at the top.



## INSTALLING THE CARTRIDGES (cont.)

- 2 Each canister is sealed using two o-rings. Ensure both o-rings are properly seated before **hand-tightening the canisters**.



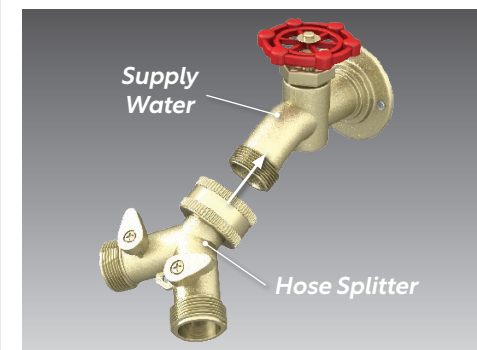
- 3 If a leak is noticed, use the included canister wrench to tighten in 1/8 turn increments.

**DO NOT OVERTIGHTEN.**

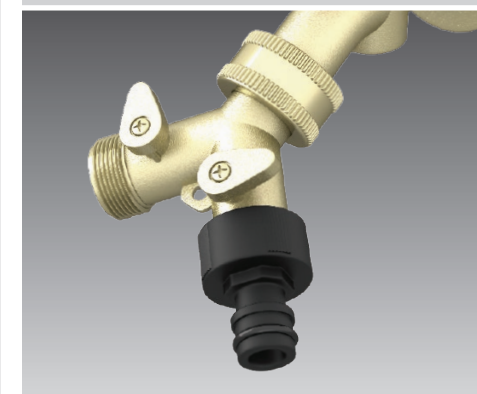
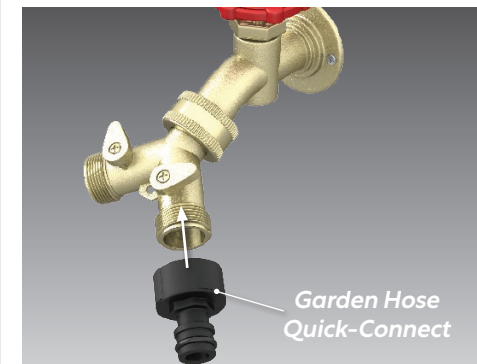


## CONNECT TO WATER SUPPLY

- 1 Determine your supply water faucet and attach the hose splitter. Hand-tighten.



- 2 Hand-tighten the 3/4" Garden Hose Quick-Connect Fitting onto the Hose Splitter.



## CONNECT TO WATER SUPPLY (cont.)

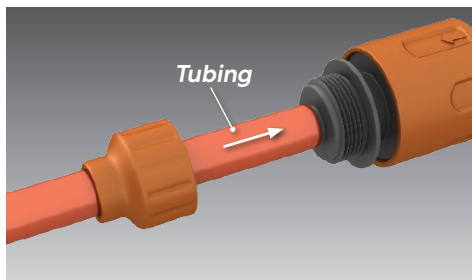
- 3 Measure and cut orange tubing to length for the supply line. This section of tubing will run from your Faucet to the **SUPPLY** port on the unit. Try to keep the supply line as short as possible.

### CONNECT COUPLERS TO ENDS OF TUBING

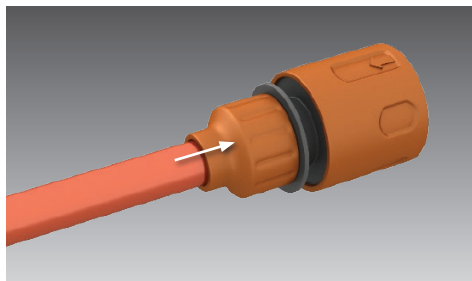
- 4 Unscrew the nut from end of the Coupler.



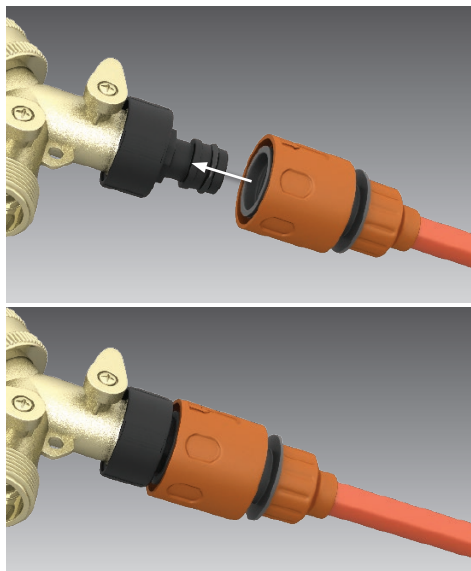
- 5 Run tubing through the nut and push onto nipple of Coupler until it stops.



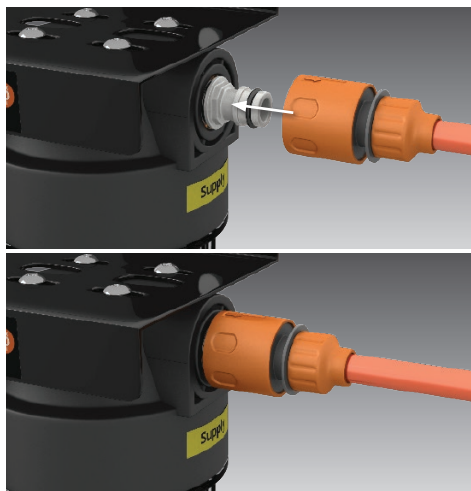
- 6 Reinstall nut onto Coupler to secure tubing. Repeat on other end of supply line.



- 7 Install the Coupler onto the Garden Hose Quick-Connect by pushing it onto the fitting until it clicks & locks onto fitting.

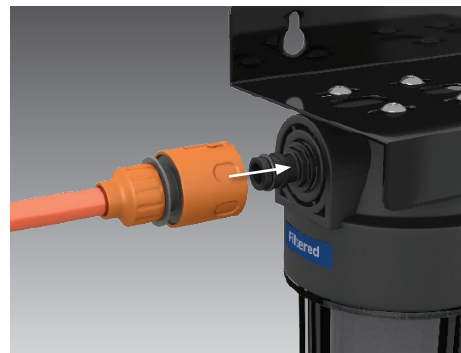


- 8 Connect other end to **SUPPLY** port to complete the supply line installation

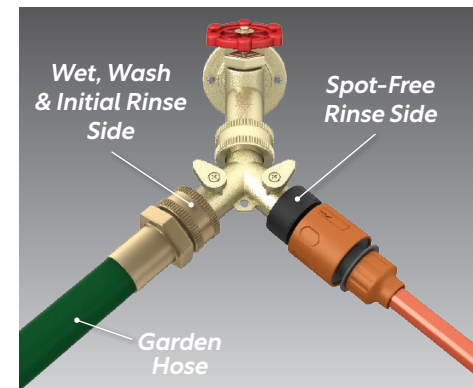


## CONNECT TO WATER SUPPLY (cont.)

- 9 Connect the last two couplers to the ends of the remaining tubing. This tubing will run from the **FILTERED** port to the Misting Nozzle.



- 10 Connect a standard garden hose to the open side of the Hose Splitter. You will use this water to wet, wash and apply initial rinse.

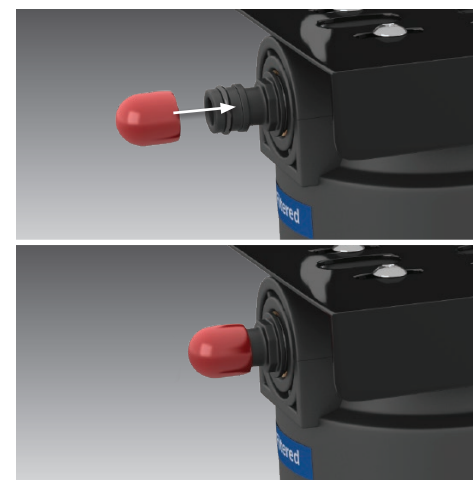


## UNIT STORAGE

### IMPORTANT: Keep resin wet between uses.

Ideal storage would be leaving the water hoses attached and canisters filled with water.

If you remove the water hoses, cap the **SUPPLY** and **FILTERED** Fittings with the Red Caps to prevent the resin from drying out.

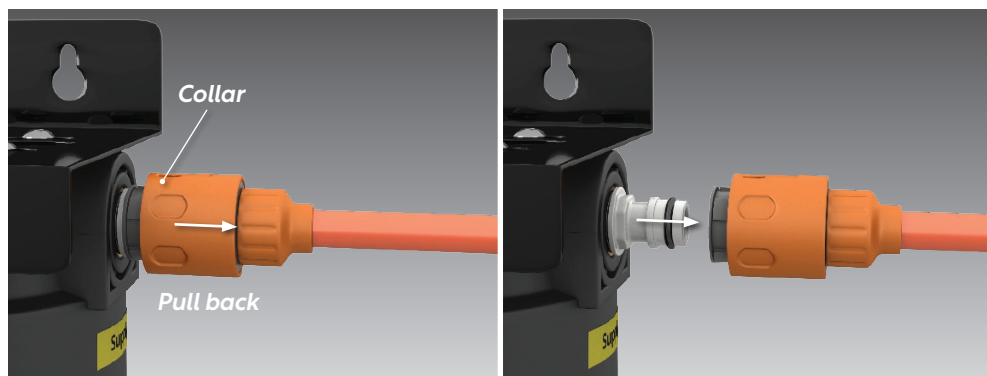




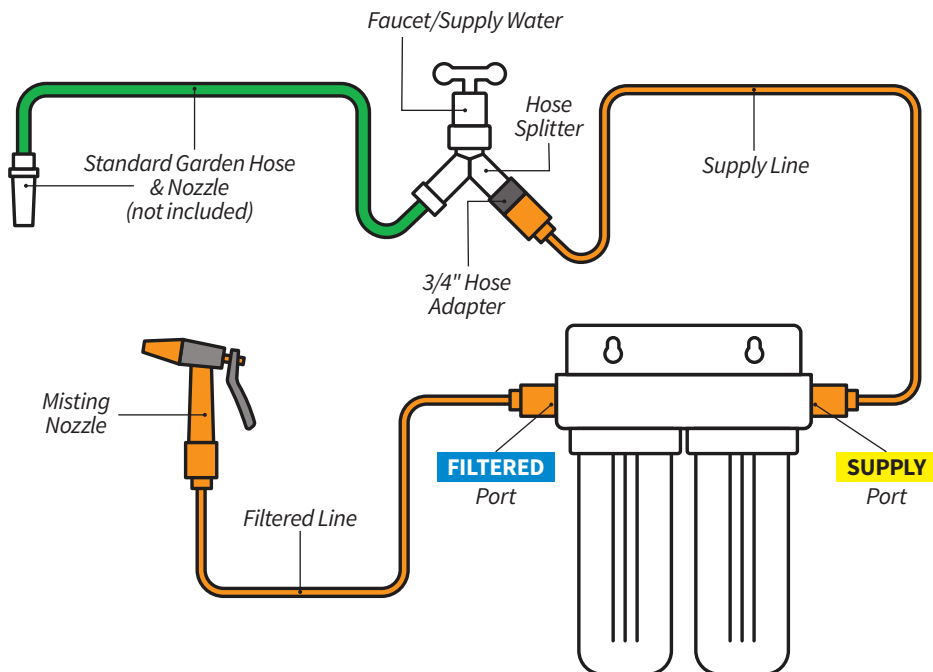
## REMOVING THE COUPLERS

1 Pull back on the collar of the Coupler.

2 Continue to hold back on collar and pull the Coupler off the fitting.



## PLUMBING DIAGRAM

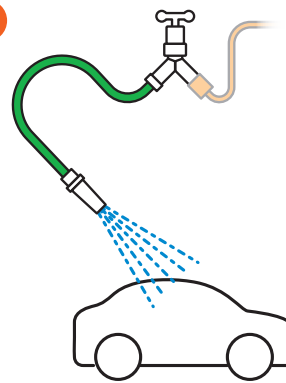


## HOW TO USE THE DI SPOT-FREE RINSE



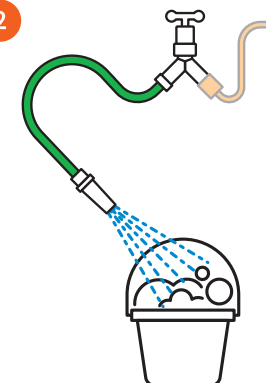
Scan Code  
for Video Tutorial

1



Wet vehicle with  
**Tap Water**

2



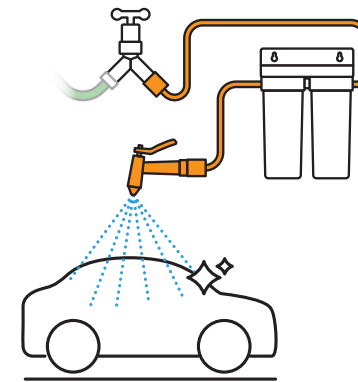
Use **Tap Water** to fill  
soap bucket

3



Wash vehicle & rinse off  
soap with **Tap Water**

4



Using the **Misting Nozzle** connected  
to the **Spot-Free Rinse Plus**,  
spray vehicle with a fine mist of  
**DI Spot-Free Rinse water**

The Spot-Free Rinse ensures spots do not form on the vehicle.  
**DO NOT use the Spot-Free Rinse for Steps 1-3.**

## UNIT MAINTENANCE

The DI resin changes to a tan color when exhausted. When the **entire cartridge has changed color**, it is time to replace or refill.



**NOTE:** When changing the exhausted cartridge, move the second cartridge to the first position & install the new cartridge in the second position. This will maximize the use of the resin.



Cartridge #2  
only partially  
exhausted.  
Move to  
#1 location

Cartridge #1  
exhausted.  
Refill or replace  
and move to  
#2 location.

## REFILL & REPLACEMENT OPTIONS

When resin is depleted, new cartridges can be installed, or the existing cartridges can be refilled with bulk resin.

**SCAN CODES** to go to purchase page.



**Cartridge  
Replacement  
2-Pack**  
Item # 330726



**4.2L Bulk Resin**  
Fills about  
6 cartridges  
Item # 330727



**ANNUAL  
REPLACEMENT  
RECOMMENDED**

**Clear Canister  
Replacement**  
Item # 470734

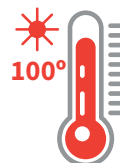
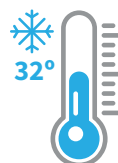


## OPERATION & CONSIDERATIONS

- Clear canisters have a limited life and should be replaced on an annual basis to prevent possible failure.
- Operating pressure greater than 80 PSI requires a pressure regulator.
- With initial operation, check for leaks.

### If a leak is observed:

- Verify there is enough plumber's tape on the fittings.
- Check that the canisters and caps are sealed properly with their o-rings.
- Most of the components in the deionization unit are plastic and subject to damage by ultraviolet light.
- **Never store or operate the unit in direct sunlight or other bright lights.**
- **Do not store or operate the unit in temperatures above 100°F.**
- **Do not store or operate the unit in freezing temperatures.**
- Do not leave the unit unattended while connected to a water supply.
- Do not operate unit if canisters or other components show any signs of damage.



## TROUBLESHOOTING

### Q. Water is leaking?

- A. The most common point of water leak is where the clear canisters screw onto the heads. Each canister includes two o-rings. It is important the o-rings are seated properly to prevent leaks. Do not over-tighten the canisters as this will not fix a leaking seal.

### Q. Why does my DI Cartridge not last as long as the next guy?

- A. The resin in DI cartridges remove a set amount of TDS from water. The higher the TDS going into the DI cartridge, the quicker the resin will be depleted. For example, if the water going into your DI cartridge is 100 TDS and your neighbor has water with 200 TDS, your DI cartridge will last two times longer than your neighbors.

Water	TDS Reading	Average Spot-Free Water Produced (Gallons)	Average Spot-Free Rinses (Vehicle Rinses)
Soft	<100 TDS	36-40	9-10
Medium	100-250 TDS	16-36	4-9
Hard	250-400 TDS	10-14	2-3
Very Hard	400-450 TDS	4-9	1-2



## 1-YEAR LIMITED WARRANTY

Lifetime Products LLC warrants that this Spot-Free Car Rinse Unit (excluding cartridges) shall be free from defective components and leaks or cracks due to defects in materials or workmanship for a period of one (1) year from the date of purchase. If a defect is shown, Lifetime Products LLC will, at Lifetime Product's sole discretion, either repair or replace the product without charge. No cash refunds will be made. This warranty is provided solely to the original consumer purchaser of the product and may not be transferred or assigned. If Lifetime Products chooses to replace the equipment, Lifetime Products may replace it with reconditioned equipment. Parts used in repairing or replacing the equipment will be warranted for 90 days from the date the equipment is returned to you or the remainder of the original warranty period, whichever is longer.

This warranty does not apply to damage resulting from accident, misuse, abuse, lack of reasonable care, failure to follow safety and installation instructions.

This warranty will be void if defects occur due to failure to observe the following conditions:

The Clearly MaD unit should only be connected to a potable municipal or potable well cold water supply.

Do not use with water that is of unknown quality without adequate disinfection before or after the unit.

- Incoming water to the unit cannot exceed 100°F.
- Incoming water pressure must be between 40 and 80 PSI.
- Do not store in direct sunlight or subject to freezing temperatures.

This warranty will not be effective unless and until the product is shown to have been used in accordance with the installation and maintenance instructions accompanying the product.

THIS CONSTITUTES LIFETIME PRODUCTS ENTIRE WARRANTY AND LIFETIME PRODUCTS MAKES NO OTHER WARRANTIES, WHETHER EXPRESS OR IMPLIED, WITH RESPECT TO THE PRODUCT. LIFETIME PRODUCTS, LLC SPECIFICALLY DISCLAIMS ANY AND ALL IMPLIED WARRANTIES, INCLUDING, WITHOUT LIMITATION, WARRANTIES OF MERCHANTABILITY AND FITNESS FOR A PARTICULAR PURPOSE. IF LIFETIME PRODUCTS, LLC CANNOT LAWFULLY DISCLAIM IMPLIED WARRANTIES UNDER THIS LIMITED WARRANTY, ALL SUCH WARRANTIES, INCLUDING WARRANTIES OF MERCHANTABILITY AND FITNESS FOR A PARTICULAR PURPOSE ARE LIMITED IN DURATION TO THE DURATION OF THIS WARRANTY.

LIFETIME PRODUCTS IS NOT RESPONSIBLE FOR DIRECT, SPECIAL, INCIDENTAL OR CONSEQUENTIAL DAMAGES RESULTING FROM ANY BREACH OF WARRANTY OR CONDITION, OR UNDER ANY OTHER LEGAL THEORY. LIFETIME PRODUCTS, LLC EXPRESSLY DISCLAIMS ALL ALLEGED DAMAGES FOR LOSS OF MARINE LIFE, PERSONAL INJURY, AND/OR PROPERTY DAMAGE.

Some states and provinces do not allow the exclusion or limitation of incidental or consequential damages or exclusions or limitations on the duration of implied warranties or conditions, so the above limitations or exclusions may not apply to you. This warranty gives you specific legal rights, and you may also have other rights that vary by state or province.

Lifetime Products, LLC shall not have any obligations under this warranty unless the owner notifies Lifetime Products, LLC in writing of any alleged defect(s) within 30 days of discovery of the defect(s).

Any notice to Lifetime Products, LLC must be delivered by United States or electronic mail to the following address: U.S. Mail: Lifetime Products, LLC, 9710 Klingerman St., S. El Monte, CA 91733 or electronic mail: [customersupport@aquaticlife.com](mailto:customersupport@aquaticlife.com). Lifetime Products shall be allowed a reasonable period of time to investigate any warranty claim and to perform any testing Lifetime Products deems necessary to determine the cause of the defect. This warranty shall be interpreted under the laws of the State of California.

**Lifetime Products, LLC**  
**9710 Klingerman St. | S. El Monte, CA 91733**  
**[customersupport@aquaticlife.com](mailto:customersupport@aquaticlife.com)**

**[www.clearlymad.com](http://www.clearlymad.com)**