

A151FG Series

MODEL A151400S-FG

BARRIER FREE, 14 GAUGE STAINLESS STEEL,
WALL MOUNTED DRINKING FOUNTAIN

STANDARD FEATURES

- Child or Adult ADA Compliant (When Properly Installed)
- 14 Gauge 304 Stainless Steel
- Polished Stainless Steel, Anti-rotation, Non-Squirt Bubbler
- 100 Mesh Inlet Strainer
- Vandal Resistant Screws
- P-Trap
- Mounting Plate With Hardware (A0000000-MP1)

SUGGESTED SPECIFICATIONS

Model A151400S-FG is a wall mounted, vandal resistant drinking fountain made from **14 gage, 304 stainless steel** with a brushed finish. Unit shall be activated by a self-closing, front pushbutton, by using less than 5 pounds of force, which activates an internally mounted valve with an adjustable stream regulator controlling the water flow. Bubbler shall be polished stainless steel with a non-squirt feature and operate on a water pressure range of 20-105 PSIG. Unit shall have a uniquely designed, contoured bowl with P-trap integral to the unit. Unit is certified to ANSI A117.1, Public Law 111-380 (NO-LEAD), CHSC 116875 and NSF/ANSI/CAN 61-2020, Section 9. Fixture meets ADA, ADA Standing Person, and ADA Child requirements when mounted appropriately.

*** NOTE: For Optional -WF1 And -WF3000:**
Installer Responsible for Remotely Locating Water Filter.
1 - Refer to Supplemental Submittal Sheets for Details

Compatible Mounting Support Carrier
Jay R. Smith Mfg. Co. Figure # 0824 <https://www.JRSmith.com>

Complies
with the
following
standards:



Federal
Public Law
111-380
(No Lead)

NSF/ANSI/CAN 61-2020



Model A151400S-FG Shown

"RATED FOR INDOOR AND OUTDOOR USE"

MODEL:

(Must Specify)

FLEXIBLE BUBBLER (LOW FLOW)

- ☐ A151200F-FG Bronze Finish
- ☐ A151300F-FG Gold Finish (High Polish)
- ☐ A151400F-FG Satin stainless Finish

LEAD-FREE STAINLESS STEEL BUBBLER

- ☐ A151200S-FG Bronze Finish
- ☐ A151300S-FG Gold Finish (High Polish)
- ☐ A151400S-FG Satin stainless Finish (Shown)

OPTIONS

(additional costs may be incurred)

- ☐ -HP High polish

ASSECCORIES

(additional costs may be incurred)

- ☐ -BP2 Back panel for single contoured fountain¹
- ☐ -WF1 1500 gallon capacity Water Filter (See Note *)
- ☒ **Coming soon** 3000 gallon capacity Water Filter (See Note *)
- ☐ A9100080-A 8 GPH Remote Water Chiller
(Recommended to be with 10 Feet of Fixture)

Product Warranty

WARNING: Cancer and Reproductive Harm - www.P65Warnings.ca.gov

MURDOCK® MFG. • 15125 Proctor Avenue • City of Industry, CA 91746 USA
Phone 800-453-7465 • www.murdockmfg.com

Member of
MORRIS GROUP
INTERNATIONAL

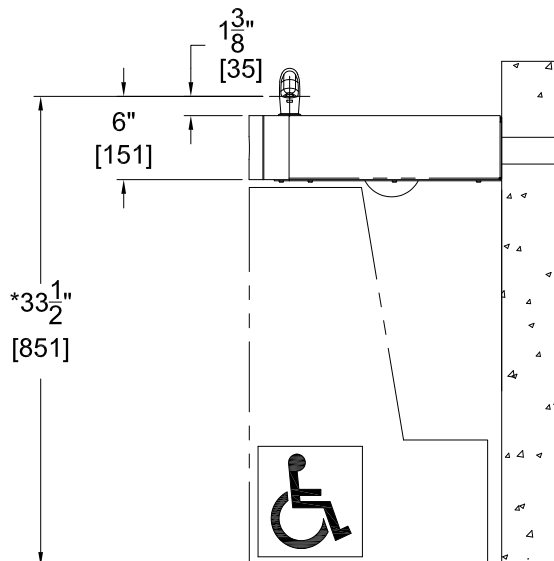
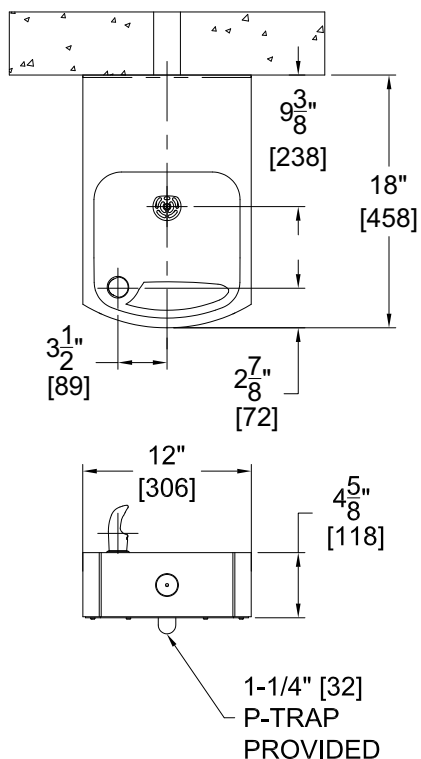
A151FG

Revised: 01/16/2024

A151FG Series

MODEL A151400S-FG

BARRIER FREE, 14 GAGE STAINLESS STEEL,
WALL MOUNTED DRINKING FOUNTAIN



GENERAL NOTES:

1. ALL DIMENSIONS ARE IN INCHES [MM].
- *2. DIMENSIONS SHOWN ARE FOR RECOMMENDED ADULT HEIGHT. ADJUST VERTICAL DIMENSIONS AS NECESSARY TO COMPLY WITH FEDERAL, STATE, & LOCAL CODES.
3. STOP VALVE NOT PROVIDED.

SELECTION SUMMARY
& APPROVAL FOR
MANUFACTURING

Model Number & Options _____	Quantity _____
Company _____	
Contact _____	Title _____
Signature (Approval for Manufacturing) _____	Date _____

All dimensions are subject to manufactures tolerance of plus or minus 1/4" nominal and subject to change without notice. Murdock® assumes no responsibility for use of void or superseded data. Dimensions may change with the addition of optional accessories. Murdock® Mfg., Member of Morris Group International®. Please visit www.murdockmfg.com for most current specifications.