

# **F I S H E R & P A Y K E L**

## **COMBI: GAS + INDUCTION COOKTOP**



**CGI905DNGTB4 FP AA**

**PRODUCT CODE: 82003-A**

**PARTS MANUAL**

**AA**

## CONTENTS

---

Introduction	2
Hob top components	3
Basepan and gas components	5
Induction components	9

# INTRODUCTION

---

BRAND	VOLTAGE	MODEL	PRODUCT CODE
Fisher & Paykel	220-240V 50Hz	CGI905DNGTB4 FP AA	82003-A

---

## MODELS

The models covered by this manual are listed on the front cover.  
The information detailed in this manual is subject to change without notice. The latest version is indicated by the reprint date and replaces any earlier editions.

## KIT PARTS

Where a part number is shown against the descriptions for kit components, they are also available as separate items. In addition, some parts may be supplied with these kits that are not available as separate items, and are therefore either not listed, or a part number is not shown against the part description in this manual.

## PARTS LIST KEY

---

<b>NI</b>	As a part reference, indicates the part is not illustrated on the diagram.
<b>NOT USED</b>	As a part number, indicates the diagram part reference is not used in this manual.
<b>NS</b>	As a part number, indicates the part is not servicable.

---

## NZ

Fisher & Paykel Appliances Ltd  
PO Box 58-546, Greenmount  
78 Springs Rd,  
East Tamaki  
New Zealand

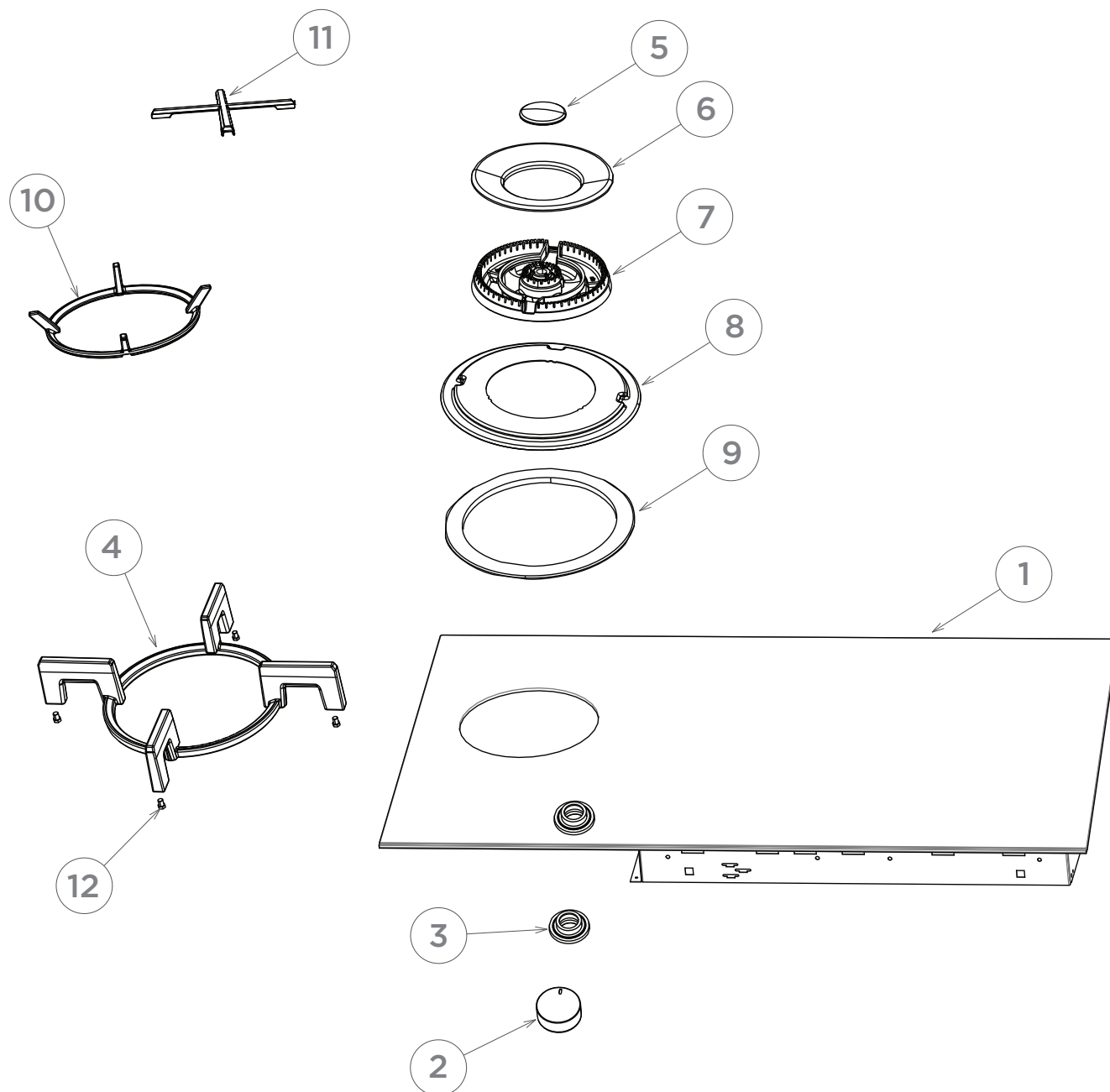
tel: (09) 2730660  
fax: (09) 2730580  
email: customer.care@fp.co.nz

## AU

Fisher & Paykel Customer Services Pty Ltd  
PO Box 798, Cleveland, QLD 4163  
A.C.N. 003 3335 171  
19 Enterprise Street Cleveland, QLD 4163  
Australia

tel: (07) 3826 9100  
fax: (07) 3826 9164  
email: customer.care@fp.com.au

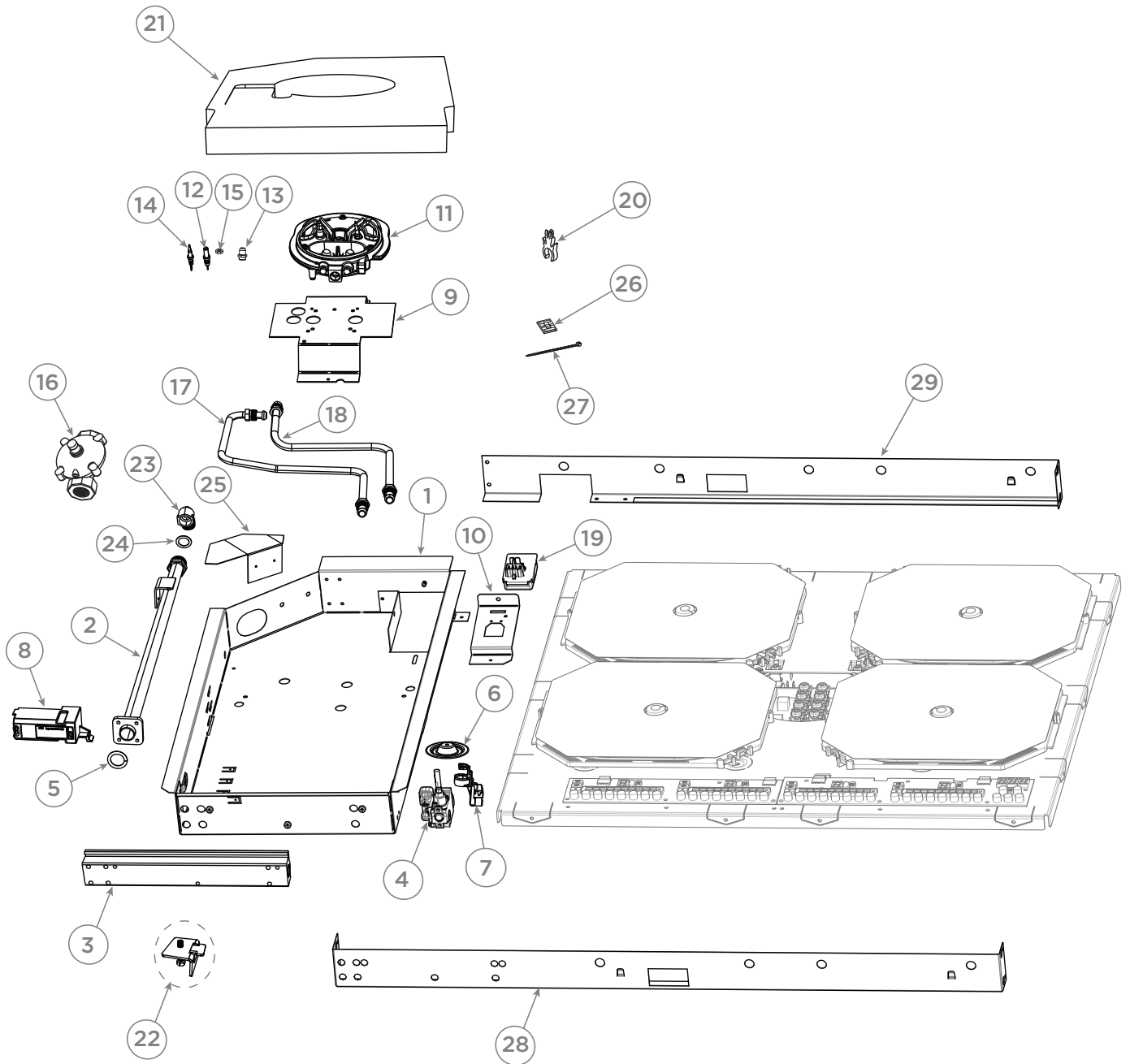
## GAS HOBTOP COMPONENTS



## GAS HOBTOP COMPONENTS

REFERENCE	PART NUMBER	PART DESCRIPTION
<b>1</b>	<b>537148P</b>	<b>GLASS BKT ASSY CGI900 SP</b>
	Includes	GLASS CERAMIC HYBRID 900
	Includes	TRIM BLACK 900
	Includes	BEZEL TAPE ASSY VBL BLACK
<b>2</b>	<b>536566</b>	<b>DIAL ASS CT VBL18 BK</b>
<b>3</b>	<b>536841</b>	<b>BEZEL TAPE ASSY VBL BLACK CT</b>
<b>4</b>	<b>533909</b>	<b>WOK TRIVET ASSY GF</b>
	Includes	FOOT BRASS TRIVET X 4
<b>5</b>	<b>533890</b>	<b>CAP INNER BURNER DUAL WOK</b>
<b>6</b>	<b>533889</b>	<b>CAP OUTER BURNER DUAL WOK</b>
<b>NI</b>	<b>534139P</b>	<b>SCREW MC M4X8 PAN PH SS (10PKT</b>
<b>NI</b>	<b>211373P</b>	<b>WASHER FLT SS #10 .430 (10PK)</b>
<b>7</b>	<b>536790</b>	<b>SPREADER BURNER DUAL WOK BLK</b>
<b>8</b>	<b>533857</b>	<b>SKIRT ENAMEL DUAL WOK GF</b>
<b>9</b>	<b>533916</b>	<b>GASKET DUAL WOK GF</b>
<b>10</b>	<b>533604</b>	<b>WOK SUPPORT DUAL WOK GF</b>
<b>11</b>	<b>533981</b>	<b>SMALL POT SUPP DUAL WOK GF</b>
<b>12</b>	<b>NS</b>	<b>FOOT BRASS TRIVET</b>

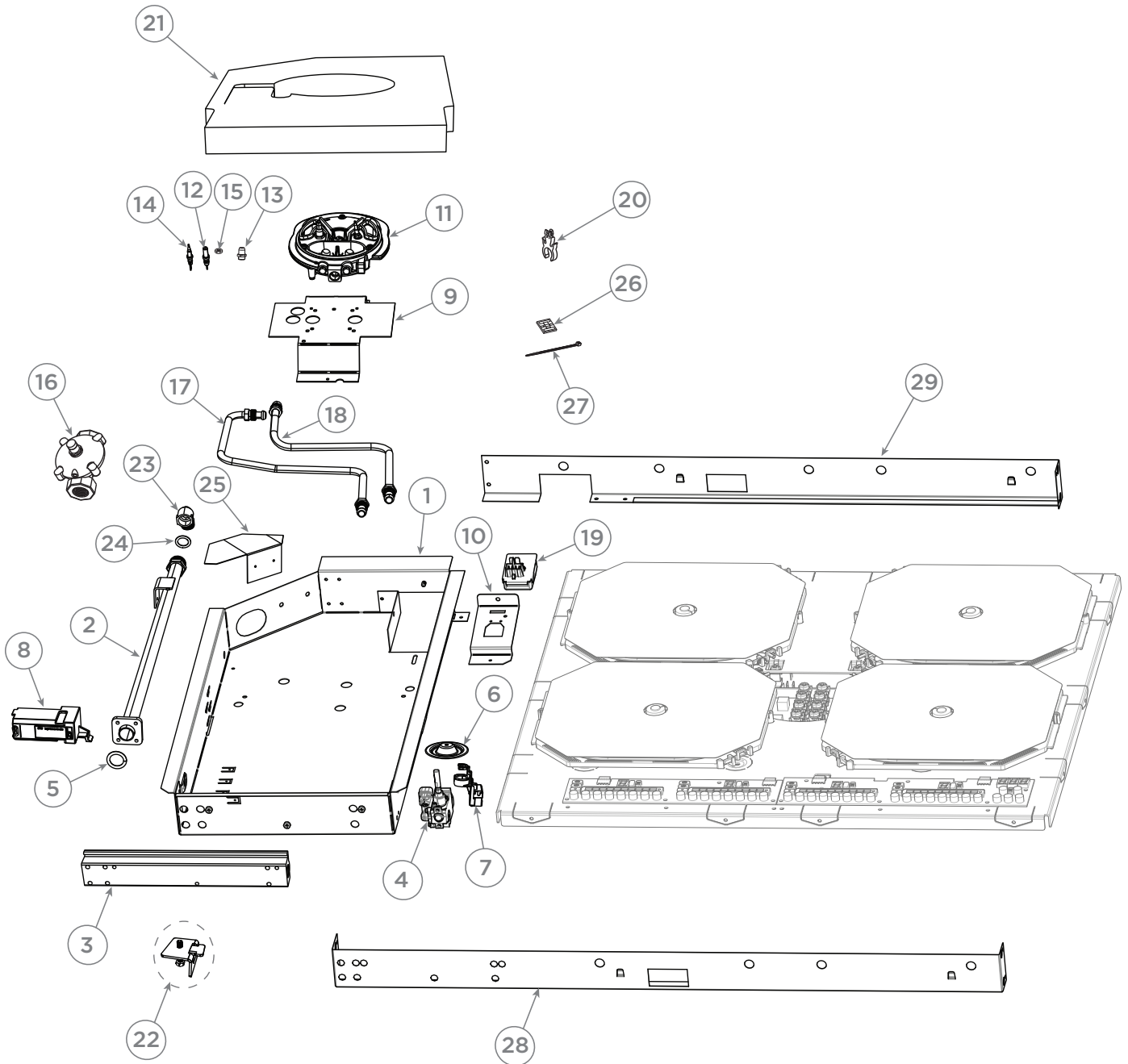
## BASEPAN & GAS COMPONENTS



## BASEPAN & GAS COMPONENTS

REFERENCE	PART NUMBER	PART DESCRIPTION
<b>1</b>	<b>537151</b>	301 BASEPAN
<b>2</b>	<b>533884</b>	INLET GAS MANIFOLD GF
<b>3</b>	<b>535446</b>	MANIFOLD EXTRUDED ALUM 301
<b>4</b>	<b>533670</b>	GAS VALVE AL DUAL SABAF
<b>5</b>	<b>532236P</b>	O RING 14X3 VITON (PKT 2)
<b>NI</b>	<b>534027P</b>	SCREW M4X25 BUTTON HEX PKT10
<b>6</b>	<b>534165</b>	SEAL GAS VALVE CT
<b>7</b>	<b>534306</b>	HARNESS VALVE MICROSW GF 451
<b>8</b>	<b>533993</b>	IGNITION BOX ITW B2000 4-WAY L
<b>9</b>	<b>533809</b>	MOUNT BURNER BOWL WOK GF
<b>10</b>	<b>534043</b>	MOUNT FLEX TERMINAL GF
<b>NI</b>	<b>556003P</b>	SCREW ST 6X3/8 T25 PAN PH PKT10
<b>NI</b>	<b>556009P</b>	SCREW ST 8X3/8 TAB MSH PHPKT10
<b>NI</b>	<b>542805P</b>	SCREW MC M4X20 HEX PH MS NP PKT 10
<b>11</b>	<b>535614</b>	BURNER BOWL DUAL WOK BF
<b>NI</b>	<b>536118</b>	JET DEFENDI TYPE4 1.45MM
<b>NI</b>	<b>534079</b>	JET DEFENDI NG 070
<b>NI</b>	<b>533897</b>	SPRING IGNITER
<b>12</b>	<b>534022</b>	IGNITER DUAL WOK 300 GF
<b>13</b>	<b>533896</b>	NUT IGNITER
<b>14</b>	<b>533886</b>	THERMOCOUPLE DUAL WOK GF
<b>15</b>	<b>533954</b>	NUT THERMOCOUPLE WOK
<b>16</b>	<b>530057</b>	REGULATOR NG 6160595
<b>NI</b>	<b>556083P</b>	SCREW TAPTITE M3.5X6 PH NP PKT10
<b>17</b>	<b>535454</b>	TUBE ASSY D WOK INNER 301
<b>18</b>	<b>535455</b>	TUBE ASSY D WOK OUTER 301
<b>19</b>	<b>534905</b>	TRMNL BLOCK-FLEX ASSY HI TEMP NZ AU
<b>20</b>	<b>531715P</b>	SUPPORT IGNITER WIRE PKT10
<b>NI</b>	<b>534005</b>	HARNESS IGNITER NEUTRAL
<b>NI</b>	<b>534006</b>	HARNESS IGNITER EARTH
<b>21</b>	<b>535453</b>	INSULATION 301 GF
<b>22</b>	<b>534142</b>	KIT BRACKET INSTALL GF
	Includes 534167	BRACKET CLAMPING COOKTOP X 4
	Includes 542805	SCREW 8X1 TAB PAN PH X 4

## BASEPAN & GAS COMPONENTS

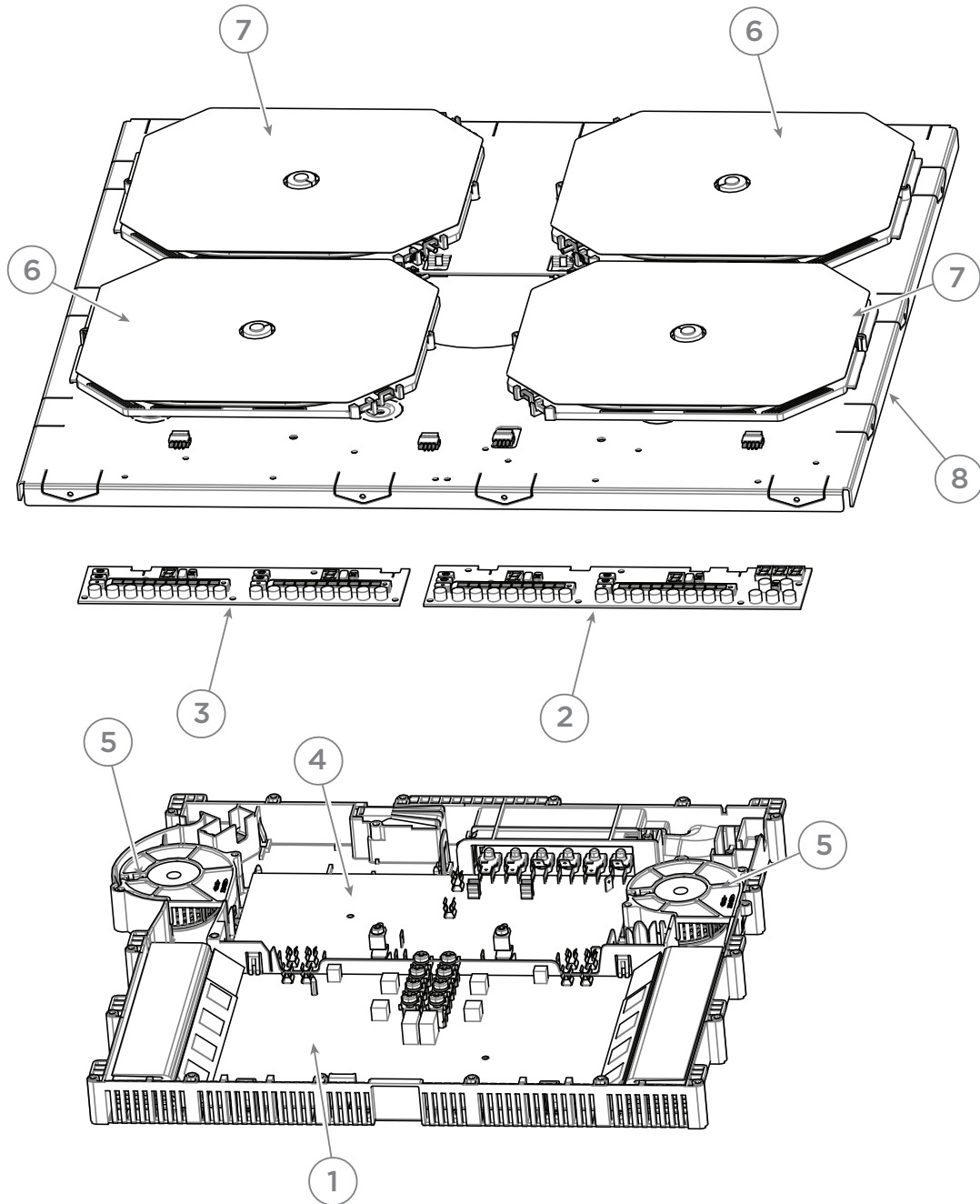




## BASEPAN & GAS COMPONENTS

REFERENCE	PART NUMBER	PART DESCRIPTION
23	530710	KIT GC ELBOW & WASHER
24	530132P	WASHER BLUE 1/2 GAS SEAL PKT10
25	534421	BRACKET REAR WALL 302 GF
26	220922	CABLE TIE MOUNT PLATE - NYLON 2
27	546309	TIE CABLE 100MM
28	516880	BKT FRONT 900 BRACE
29	516879	BKT REAR 900 BRACE
NI	516435	BK UG CGI60 90 AA
NI	866343	BK INSTL CGI60 90 AA

## INDUCTION COMPONENTS



## INDUCTION COMPONENTS

REFERENCE	PART NUMBER	PART DESCRIPTION
<b>1</b>	<b>534842</b>	<b>POWER BOARD 4 ZONE CI604</b>
<b>2</b>	<b>537088P</b>	<b>PCB/MASK ASSY 604 MASTER RED</b>
	Includes	PCB_INTERFACE_604_MASTER_RED
	Includes	MASK PRO MASTER CI LIGHT SCRΝ
<b>3</b>	<b>537089P</b>	<b>BOARD/MASK ASY SLAVE CNTRL 604</b>
	Includes	PCB_INTERFACE_604_SLAVE_RED
	Includes	MASK PRO SLAVE CI
<b>4</b>	<b>534845</b>	<b>FILTER BOARD</b>
<b>5</b>	<b>534839</b>	<b>FAN</b>
<b>6</b>	<b>534840</b>	<b>INDUCTOR COIL SMART ZONE 1</b>
<b>7</b>	<b>534841</b>	<b>INDUCTOR COIL SMART ZONE 2</b>
<b>8</b>	<b>NS</b>	<b>PANEL ELEMENT SUPPORT</b>

**FISHERPAYKEL.COM**

© Fisher & Paykel Appliances Ltd 2020. All rights reserved.

The product specifications in this document apply to the specific products and models described at the date of issue. Under our policy of continuous product improvement, these specifications may change at any time. You should therefore check with your Dealer to ensure this document correctly describes the product currently available.

For current details about model and specification availability in your country, go to our website [fisherpaykel.com](http://fisherpaykel.com) or contact your local Fisher & Paykel dealer

**PRODUCT CODE: 82003-A 10.20**