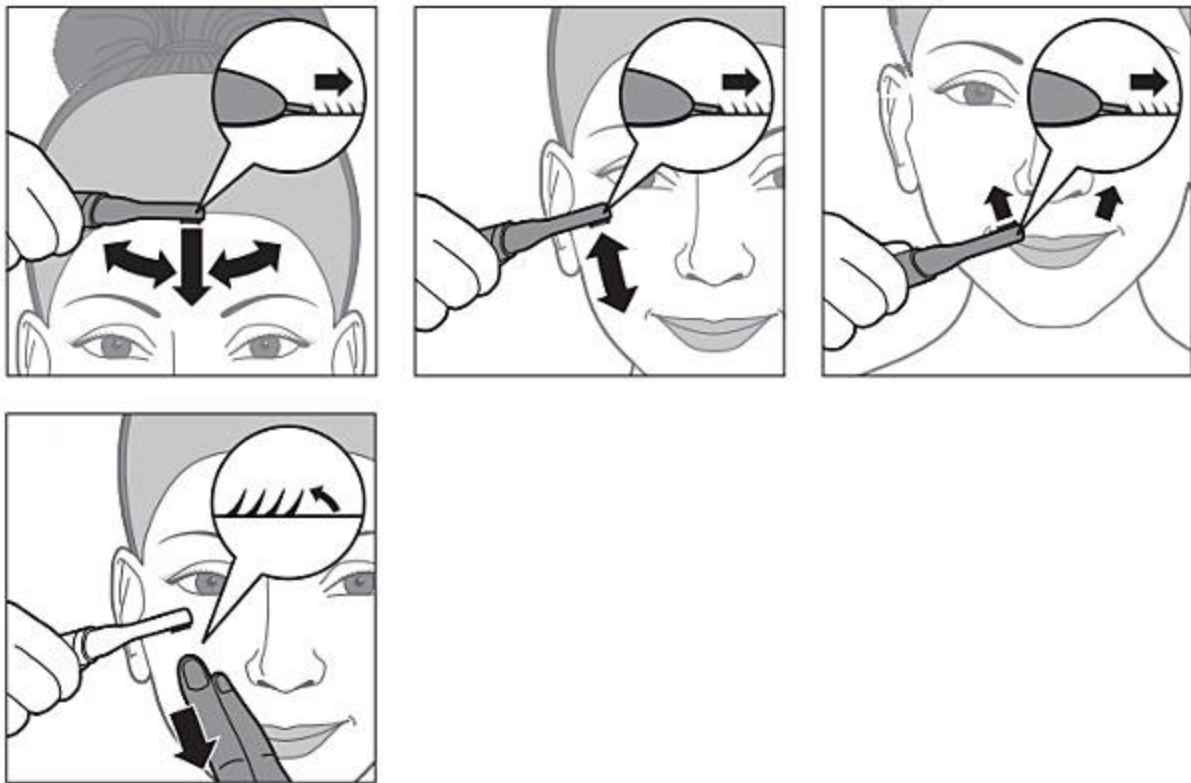


# How do I use the Philips Precision Trimmer on my face?

Find out here how to use you Philips Precision Trimmer to remove facial hair from your forehead, cheeks or upper lip.

## Instructions to use

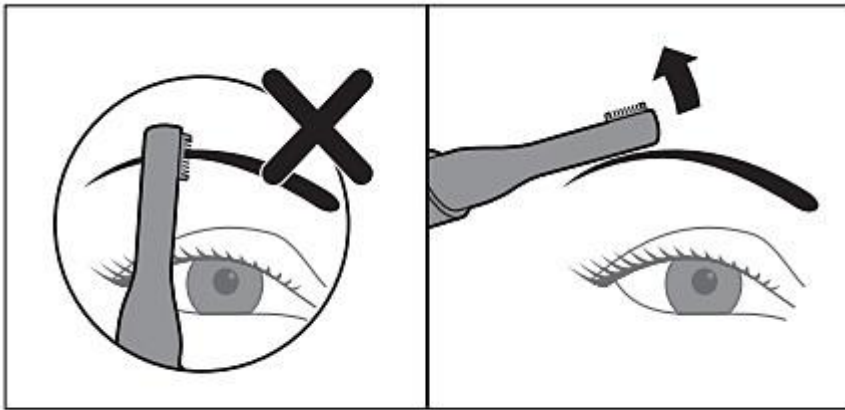
- Place the trimming head gently on the skin and move it slowly against the direction of the hair growth.
- Make sure that the trimming head is in complete contact with the skin.
- Try stretching your skin with your free hand, so the hair stand up and are easily reached.
- Apply gentle pressure and make small movements on small areas



## Eyebrow trimming

- Attach the eyebrow trimmer attachment with desired hair length onto the trimming head.
- Place the trimming head with the eyebrow trimmer comb on the outside of your eyebrow
- Move the appliance slowly over your eyebrow in the direction of your nose, against the grain.

- Use trimmer without comb, to touch up hair around the eye brow. Be careful, without comb it removes every hair it touches.



The information on this page applies to the following models: HP6388/00 , HP6393/00 .

## **Can I rinse my Philips Satinelle grooming products with water?**

You can rinse your Philips Satinelle Epilator, Trimmer or Shaver only if it is waterproof. You can check that by looking at the signs and symbols printed on your device's box or body.

### **Crossed out tap symbol**

If you see a crossed out tap symbol on the box or body of your Philips female grooming devices, it means that the product is not washable. These products are only suitable for dry use and should be cleaned without water.



## Tap symbol

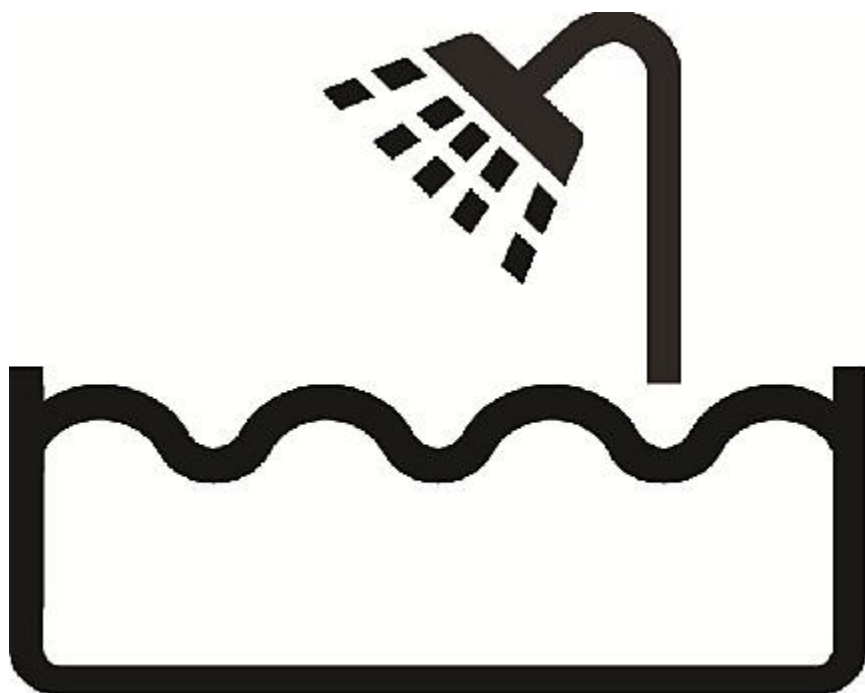
A tap symbol printed on your Philips Satinelle device indicates that it is washable and its parts (cutters and combs) can be cleaned with water. However, this does not mean that you can use it to clip or trim your hair in the shower or bath.



## **Bath or shower symbol**

If you see a shower or bath symbol printed on your epilator or trimmer, it means that your device is waterproof. It can be safely cleaned with water and used while taking a shower or a bath. For safety reasons, these waterproof devices can only be used cordless and will not turn on if they are connected to the power supply.

Note: Please keep in mind that the symbols on your Philips Satinelle products vary per model type. If you are still unsure whether it is safe to clean your device with water then please contact us for further support.



The information on this page applies to the following models: BRE710/00 , BRT383/15 , HP6388/00 . [Show more product numbers](#)