

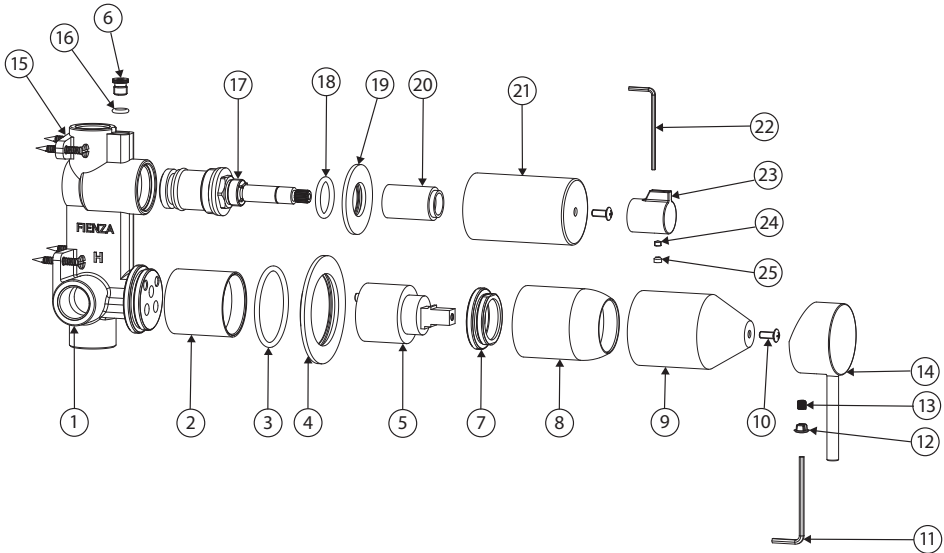
General Information

- This product must be installed by a qualified licensed plumber in accordance with AS/NZS 3500 and all applicable local regulations and plumbing codes.
- All pipe work must be thoroughly flushed prior to installation.
- Do not remove the ceramic cartridge from the mixer when installing.
- After installation all hoses and connections must be checked for leaks.
- It is the responsibility of the installer to ensure a waterproof seal is achieved between the product and mounting surface.

Installation

IMPORTANT: Before commencing installation, turn off the water supply. While not essential, we recommend fitting isolation valves to both the hot and cold-water supply.

1. Remove product from packaging and check for damages. If the product is damaged in any way, do not install and return to the store where the item was purchased.
2. Fasten screws (15) to secure the mixer assembly in place.
3. Attach water supply to the hot and cold water inlets as marked on the body (11).
4. When all other plumbing has been fitted, turn on the water supply and check carefully for leaks. Re-tighten fittings if necessary.
5. During wall construction ensure that the mounting threads are exposed to allow fitting of the sleeves, cover plate, handle, and diverter knob.
6. Once the wall has been finished, remove the protective covers (16 and 17) by removing the screws (15).
7. Push the cover sleeves (8 and 4) over the mixer and diverter bodies respectively and screw into place by hand.
8. Push the cover plate (10) over the cover sleeves (4 and 18) until it is flush with the wall.
9. Fit the handle and diverter knob (1 and 14) onto their respective cartridge bodies (6 and 19).
10. Use the allen keys (21 and 22) and screw the grub screws (3 and 13) into the back of the handle and knob respectively to secure. Fit the hole caps (2 and 12).



Drawing shown with
Kaya Wall Diverter Mixer, Small Round Plates (228102-4)

Cleaning & Care

We recommend weekly cleaning with mild soapy water and a microfiber cloth. In highly polluted or coastal locations we recommend cleaning 2-3 times per week. Please note that colour tapware requires more frequent cleaning than chrome tapware.

- Never use harsh detergents, citrus-based cleaners or abrasive cleaners, as these will scratch the surface. Use of unsuitable cleaners may damage the surface and will not be covered by warranty.
- Where your tapware remains dry in use, a non-abrasive soft cloth can be used to remove surface dust.
- Use of wax-based furniture cream should be avoided as these can result in a build-up of deposits which could detract from the appearance.
- Do not use undue pressure and wipe in one direction only.

| | | | | | |
|---|-------------------|----|--------------------|----|-------------------|
| 1 | Body | 10 | Screw | 19 | Plate |
| 2 | Cartridge sleeve | 11 | 2.5mm Allen Key | 20 | Diverter Cover |
| 3 | O-ring | 12 | Hole Cap | 21 | Protective sleeve |
| 4 | Plate | 13 | Screw | 22 | 2mm Allen Key |
| 5 | Cartridge | 14 | Handle | 23 | Diverter Handle |
| 6 | Plug | 15 | Screw | 24 | Screw |
| 7 | Lock Nut | 16 | O-ring | 25 | Hole Cap |
| 8 | Cover sleeve | 17 | Diverter Cartridge | | |
| 9 | Protective Sleeve | 18 | O-ring | | |